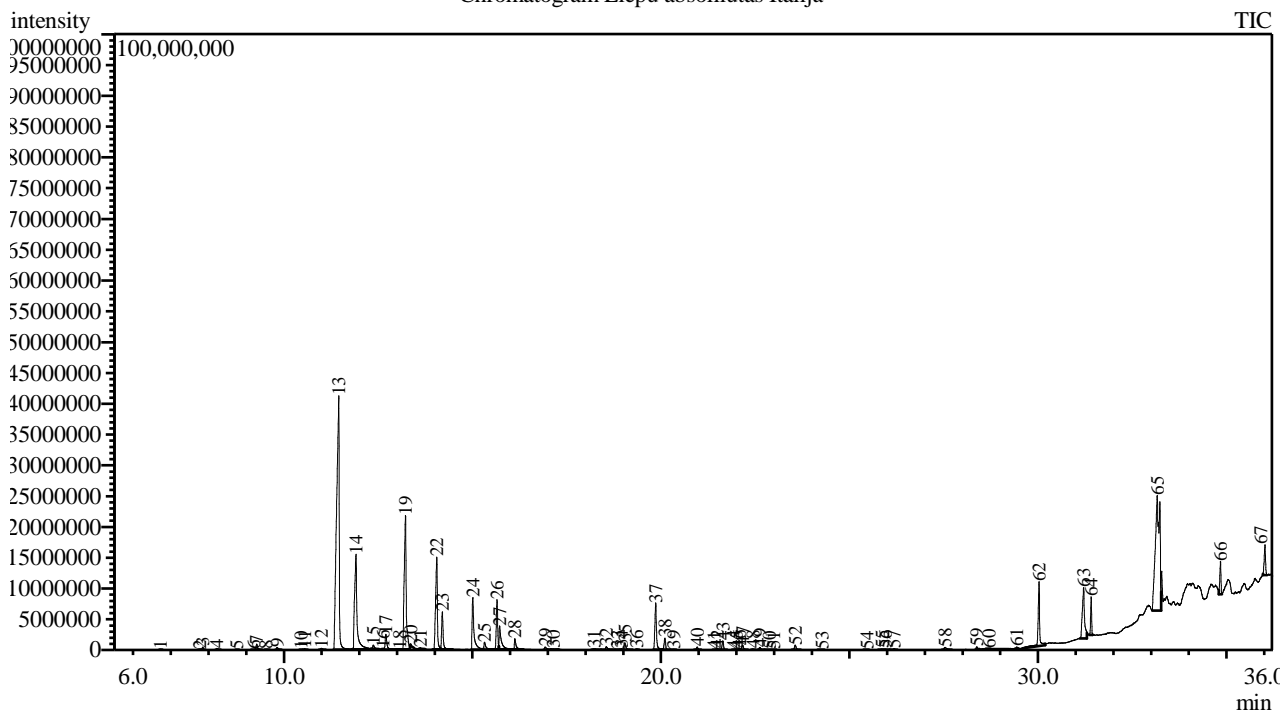


Analysis numb.: GC1043  
 Analysis date: 2020 11 18  
 Sample name: Liepu absoliutas  
 Botanical name: Tilia cordata  
 Sample batch num: 20201016014  
 Sample origin: Italija  
 Best before: 2023 10

Chromatogram Liepu absoliutas Italija



Peak Report TIC

Peak#	R.Time	Area	Area%	Name
1	6.729	155312	0.02	Pinene <alpha->
2	7.762	167191	0.02	Sabinene
3	7.847	936912	0.12	Pinene <beta->
4	8.222	585935	0.07	Myrcene
5	8.748	96291	0.01	Carene <delta-, 3->
6	9.194	98913	0.01	Anisole <para-, methyl-> + Cymene <para->
7	9.276	2390389	0.29	Limonene*
8	9.530	272862	0.03	Ocimene <cis-, beta->
9	9.817	1149232	0.14	Ocimene <trans-, beta->
10	10.456	62839	0.01	Sabinene hydrate <cis->
11	10.549	408487	0.05	Linalool oxide <cis->
12	10.995	814575	0.10	Linalool oxide <trans->
13	11.455	201694922	24.76	Linalool*
14	11.912	71027609	8.72	Phenethyl alcohol
15	12.372	1659508	0.20	Terpin-3-en-1-ol
16	12.624	45711	0.01	Camphor
17	12.705	8115303	1.00	Terpineol <beta-, cis->
18	13.065	184588	0.02	Isoborneol
19	13.224	80435554	9.88	Benzyl acetate
20	13.364	704564	0.09	Borneol
21	13.621	445403	0.05	Terpinen-4-ol
22	14.055	48188589	5.92	Terpineol <alpha->
23	14.203	16793673	2.06	Terpineol <gamma->
24	15.011	28759060	3.53	Citronellol*

Peak#	R.Time	Area	Area%	Name
25	15.322	4323267	0.53	Neral
26	15.654	20058008	2.46	Linalyl acetate
27	15.723	15420918	1.89	Geraniol*
28	16.125	5309436	0.65	Geranial
29	16.929	1588699	0.20	Non-2-ynoate <methyl->
30	17.147	394644	0.05	Indole
31	18.223	734495	0.09	Anthranilate <methyl->
32	18.552	1843305	0.23	Eugenol** + Neryl acetate
33	18.850	119478	0.01	Cyclosativene
34	18.952	349074	0.04	Copaene <alpha->
35	19.044	3312685	0.41	Geranyl acetate
36	19.362	240979	0.03	Ethyl decanoate
37	19.862	22413745	2.75	Anthranilate <methyl-, N-methyl->
38	20.106	5225999	0.64	Caryophyllene
39	20.336	153055	0.02	Copaene <beta->
40	20.963	1049246	0.13	Humulene <alpha->
41	21.410	72723	0.01	Cadina-1(6),4-diene <trans->
42	21.500	475761	0.06	Muurolene <gamma->
43	21.642	3918498	0.48	Germacrene D
44	21.935	174855	0.02	Amorphene <gamma->
45	22.003	138189	0.02	Curzerene + Bicyclogermacrene
46	22.077	290745	0.04	Muurolene <alpha->
47	22.167	2466623	0.30	Farnesene <(E,E)-, alpha->
48	22.438	251305	0.03	Cadinene <gamma->
49	22.625	1156121	0.14	Cadinene <delta->
50	22.871	79060	0.01	Cadina-1,4-diene <trans->
51	22.996	74951	0.01	Cadinene <alpha->
52	23.563	2335238	0.29	Nerolidol <(E)->
53	24.274	167845	0.02	Ethyl dodecanoate
54	25.461	127308	0.02	Epicubanol
55	25.860	407812	0.05	T-Muurolol
56	25.959	314374	0.04	Muurolol <alpha->
57	26.185	494815	0.06	Cadinol <alpha->
58	27.536	1631234	0.20	Farnesol <(2Z,6Z)->**
59	28.378	996101	0.12	Benzyl benzoate**
60	28.698	99431	0.01	Ethyl tetradecanoate
61	29.439	483536	0.06	Farnesyl acetate
62	30.030	32212231	3.95	Benzyl salicylate*
63	31.210	33285370	4.09	Hexadecanoic acid
64	31.411	11398792	1.40	Palmitate <ethyl->
65	33.163	149901543	18.40	Linoleic acid
66	34.840	11523494	1.41	Unknown
67	36.021	12299627	1.51	Cinnamyl cinnamate
		814508037	100.00	

Kosmetiniai alergenai: \*-silpnas, \*\*-vidutinio stiprumo, \*\*\*- stiprus alergenai

Analiz atliko

dr. Jurga B dien