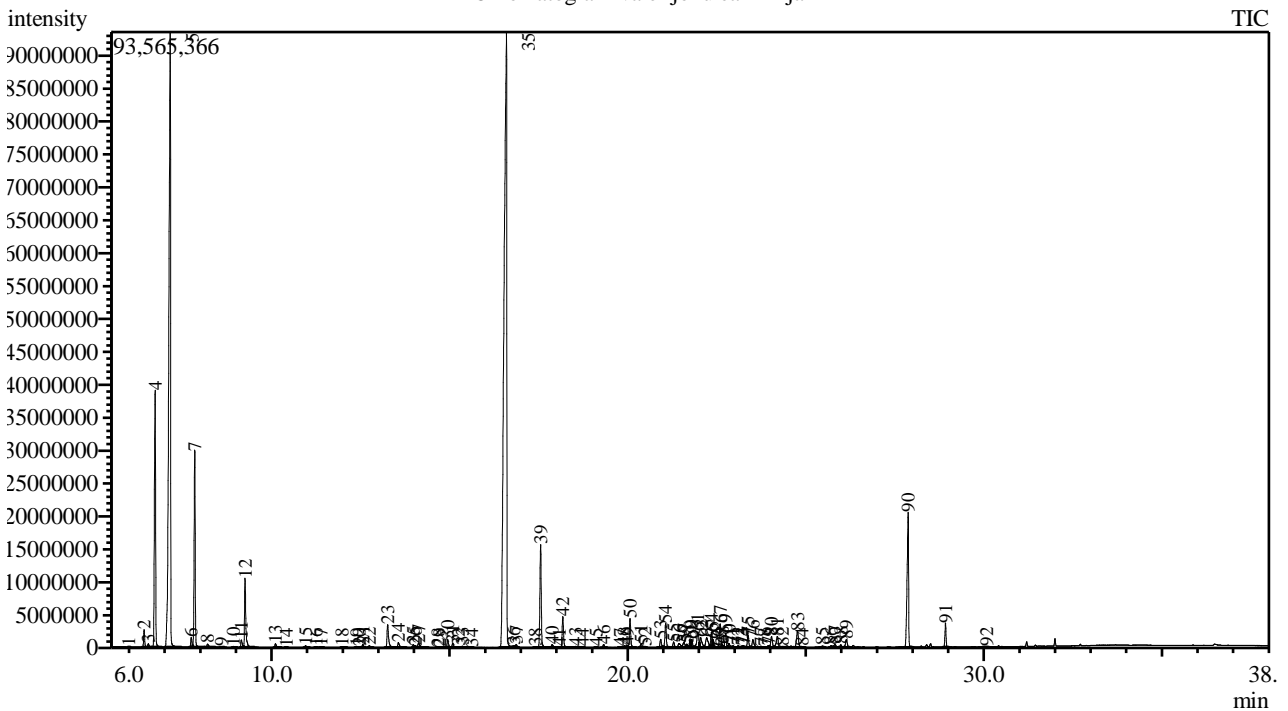


Analysis numb.: GC1114  
 Analysis date: 2021 02 24  
 Sample name: Valerijonu ea  
 Botanical name: Valeriana officinalis  
 Sample batch num: 20200311003  
 Sample origin: Kinija  
 Best before: 2023 03

Chromatogram Valerijonu ea Kinija



Peak Report TIC

Peak#	R.Time	Area	Area%	Name
1	5.992	131716	0.01	Bornylene
2	6.422	5358909	0.41	Tricyclene
3	6.541	1135407	0.09	Thujene <alpha->
4	6.732	89902386	6.90	Pinene <alpha->
5	7.156	315373459	24.21	Camphene
6	7.747	3416916	0.26	Sabinene
7	7.846	64027902	4.92	Pinene <beta->
8	8.203	1576642	0.12	Myrcene
9	8.599	93081	0.01	Phellandrene <alpha->
10	8.928	376715	0.03	Terpinene <alpha->
11	9.154	2962969	0.23	Cymene <para->
12	9.258	25814215	1.98	Limonene*
13	10.111	1550296	0.12	Terpinene <gamma->
14	10.424	56518	0.00	Sabinene hydrate <cis->
15	10.956	681432	0.05	Terpinolene
16	11.247	64108	0.00	Pinene oxide <alpha->
17	11.387	189251	0.01	Linalool*
18	11.982	296270	0.02	Mentha-2,8-dien-1-ol <trans-, para->
19	12.393	209468	0.02	Mentha-2,8-dien-1-ol <cis-, para->
20	12.474	291468	0.02	Pinocarveol <trans->
21	12.567	1280566	0.10	Camphor
22	12.747	719255	0.06	Camphene hydrate
23	13.262	11105588	0.85	Borneol
24	13.563	2459096	0.19	Terpinen-4-ol

Peak#	R.Time	Area	Area%	Name
25	13.977	1294599	0.10	Terpineol <alpha->
26	14.040	92428	0.01	Myrtenal
27	14.129	2691300	0.21	Myrtenol
28	14.668	86083	0.01	Nonadienal <(2E,4E)->
29	14.727	106775	0.01	Cyclocitral <beta->
30	14.948	3301220	0.25	Thymol methyl ether
31	15.089	1918814	0.15	Thymol methyl ether
32	15.247	162209	0.01	Camphenol acetate <6->
33	15.358	612841	0.05	Carvacryl methyl ether
34	15.622	129435	0.01	Linalyl acetate
35	16.596	490785291	37.68	Bornyl acetate
36	16.806	332823	0.03	Terpinen-7-al <gamma->
37	16.872	996723	0.08	Pinocarvyl acetate <trans->
38	17.405	176710	0.01	Pinocarvyl acetate <cis->
39	17.558	41466069	3.18	Myrtenyl acetate
40	17.883	1834835	0.14	Elemene <delta->
41	18.083	450735	0.03	Unknown
42	18.180	12738506	0.98	Terpinyl acetate <alpha->
43	18.538	672135	0.05	Neryl acetate + Carvyl acetate <cis->
44	18.729	177445	0.01	Unknown
45	19.110	157272	0.01	Unknown
46	19.327	1192895	0.09	Elemene <beta->
47	19.792	315561	0.02	Gurjunene <alpha->
48	19.909	889659	0.07	Cedrene <alpha->
49	19.984	732162	0.06	Ionol <beta->
50	20.067	12283857	0.94	Caryophyllene <(E)->
51	20.381	1783806	0.14	Copaene <beta->
52	20.488	412159	0.03	Aromadendrene
53	20.929	3913333	0.30	Humulene <alpha->
54	21.066	9910228	0.76	Unknown
55	21.292	2581149	0.20	Unknown
56	21.442	2871204	0.22	Alloaromadendrene
57	21.579	3092161	0.24	Amorphene <alpha-> + Curcumene <alpha->
58	21.664	1421447	0.11	Ionone <(E)-, beta->
59	21.754	3039805	0.23	Selinene <beta->
60	21.801	3381990	0.26	Dihydroagarofuran <4-epi-, cis->
61	21.973	9288122	0.71	Bicyclogermacrene
62	22.049	6175530	0.47	Muurolene <alpha->
63	22.220	7379217	0.57	Cuparene
64	22.352	5527674	0.42	Alaskene <alpha->
65	22.397	2348105	0.18	Cadinene <gamma->
66	22.507	358174	0.03	Selinene <7-epi-, alpha->
67	22.597	9517414	0.73	Cadinene <delta->
68	22.660	422589	0.03	Zonarene
69	22.752	6032488	0.46	Kessane
70	22.845	1950727	0.15	Cadina-1,4-diene <trans->
71	22.958	1214975	0.09	Cadinene <alpha->
72	23.104	977891	0.08	Calacorene <alpha->
73	23.212	764626	0.06	Unknown
74	23.260	726837	0.06	Elemol <alpha->
75	23.380	5382199	0.41	(6,6-Dimethylbicyclo[3.1.1]hept-2-en-2-yl)m
76	23.517	4597600	0.35	Nerolidol <(E)->
77	23.743	882121	0.07	Citronellyl butyrate
78	23.850	276001	0.02	Caryophyllene alcohol
79	23.951	874957	0.07	Germacrene D-4-ol
80	24.040	5665389	0.43	Spathulenol
81	24.204	6661259	0.51	Caryophyllene oxide
82	24.340	592769	0.05	Andrographolide
83	24.771	9422979	0.72	Unknown
84	24.902	528434	0.04	Humulene epoxide II
85	25.468	936972	0.07	Unknown
86	25.709	954957	0.07	Unknown
87	25.824	2017291	0.15	Cadinol <alpha-> +Valerianol
88	25.986	1519535	0.12	Unknown
89	26.140	4107019	0.32	Unknown
90	27.877	60061155	4.61	Unknown
91	28.925	7968618	0.61	Unknown
92	30.087	287869	0.02	Humulane-1,6-dien-3-ol
		1302500790	100.00	



Analiz atliko

dr. Jurga B. dien