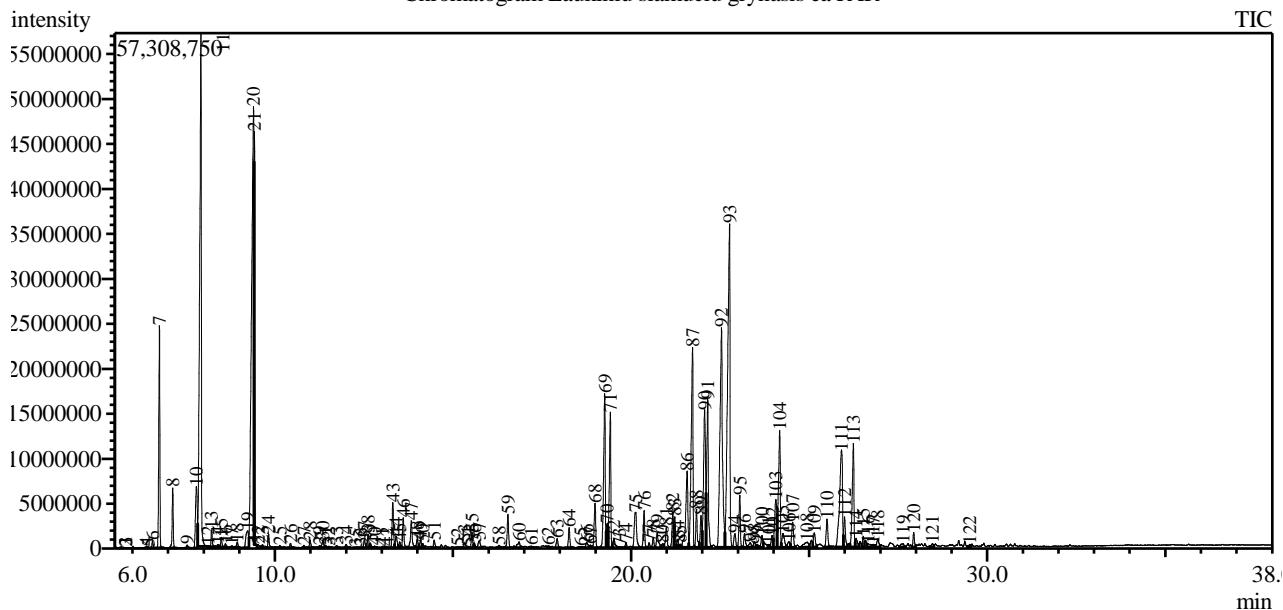


Analysis numb.: GC397  
 Analysis date: 2017 02 15  
 Sample name: Laukini šlamu i grynasis ea  
 Botanical name: Helichrysum splendidum  
 Sample batch num: SPL0808TH  
 Sample origin: South Africa Republic  
 Best before: 2017 08

Chromatogram Laukiniu slamuciu grynasis ea PAR



Peak Report TIC

Peak#	R.Time	Area	Area%	Name
1	5.354	465626	0.03	Isoamyl acetate
2	5.413	104763	0.01	Methyl butyl acetate <2->
3	5.680	225825	0.01	Pentanoate <methyl-, 4-methyl->
4	6.394	463769	0.03	Ethyl pentanoate
5	6.447	177932	0.01	Tricyclene
6	6.563	1674755	0.10	Thujene <alpha->
7	6.757	51712025	3.01	Pinene <alpha->
8	7.130	13986635	0.81	Camphene
9	7.534	792872	0.05	Methyl 2,4-dimethylpentanoate
10	7.795	23727542	1.38	Sabinene
11	7.923	187579293	10.92	Pinene <beta->
12	8.122	219252	0.01	Hept-5-en-2-one <6-methyl->
13	8.222	4190861	0.24	Myrcene
14	8.391	1028015	0.06	Unknown
15	8.494	2412652	0.14	Carene <delta-2->
16	8.611	908073	0.05	Phellandrene <alpha->
17	8.788	602372	0.04	Cresol methyl ether <orta->
18	8.942	1699871	0.10	Terpinene <alpha->
19	9.236	9556293	0.56	Cymene <para->
20	9.399	227435642	13.24	Phellandrene <beta->
21	9.426	52708610	3.07	Eucalyptol
22	9.529	1528214	0.09	Ocimene <cis-, beta->
23	9.652	1015041	0.06	Methyl 2-ethylhexanoate
24	9.822	4207165	0.24	Ocimene <trans-, beta->
25	10.139	848106	0.05	Terpinene <gamma->
26	10.436	1209240	0.07	Sabinene hydrate <cis->
27	10.812	644478	0.04	1-Hexanol, 4-methyl-, acetate
28	10.988	2528219	0.15	Terpinolene
29	11.259	768512	0.04	Undecane <n->

Peak#	R.Time	Area	Area%	Name
30	11.349	2702570	0.16	Linalool*
31	11.426	624423	0.04	Isopentyl 2-methyl butanoate
32	11.509	401491	0.02	Isovalerate <2-methylbutyl->
33	11.733	980874	0.06	Isobutyrate, <3-Methyl pentyl->
34	11.998	1340404	0.08	Menth-2-en-1-ol <cis-, para->
35	12.270	202259	0.01	Butyl tiglate
36	12.410	268828	0.02	Nopinone
37	12.512	2449848	0.14	Pinocarveol <trans->
38	12.617	3844281	0.22	Camphor
39	12.682	1459547	0.08	Angelate <2-methylbutyl->
40	12.800	644311	0.04	Isoamyl tiglate
41	13.023	457252	0.03	Pinochamphone <trans->
42	13.137	632714	0.04	Pinocarvone
43	13.311	13796177	0.80	Borneol
44	13.404	4550396	0.26	Carvenone
45	13.504	1858747	0.11	Unknown
46	13.604	8974193	0.52	Terpinen-4-ol
47	13.831	10064156	0.59	Cryptone
48	13.994	2972934	0.17	Terpineol <alpha->
49	14.092	2669109	0.16	Myrtenal
50	14.153	1260570	0.07	Myrtenol
51	14.472	2699413	0.16	Unknown
52	15.129	296609	0.02	Thymol methyl ether
53	15.329	2397593	0.14	Cumin aldehyde
54	15.430	306462	0.02	Carvone
55	15.534	4557536	0.27	Carvotanacetone
56	15.603	1406516	0.08	Angelate <methylpentyl->
57	15.739	3221586	0.19	Phenyl ethyl acetate <2->
58	16.294	1245177	0.07	Phellandral
59	16.543	10629772	0.62	Bornyl acetate
60	16.855	3133649	0.18	Cymen-7-ol <para-> + Unknown
61	17.198	992597	0.06	Carvacrol
62	17.685	681193	0.04	Tiglate <hexyl->
63	17.926	3367385	0.20	Elemene <delta->
64	18.262	6042555	0.35	Cubebene <alpha->
65	18.581	534754	0.03	Neryl acetate
66	18.761	2268436	0.13	Unknown
67	18.857	967079	0.06	Ylangene <alpha->
68	18.988	14640405	0.85	Copaene <alpha->
69	19.261	53477268	3.11	Bourbonene <beta->
70	19.331	8815252	0.51	Cubebene <beta->
71	19.418	43428283	2.53	Elemene <beta->
72	19.521	3995585	0.23	2-Butanone, 4-(2,2-dimethyl-6-methylenecyc
73	19.668	208835	0.01	Methyleugenol
74	19.858	1624180	0.09	Gurjunene <alpha->
75	20.128	18371710	1.07	Caryophyllene <(E)->
76	20.368	10835854	0.63	Copaene <beta->
77	20.507	1530484	0.09	Gurjunene <beta->
78	20.624	2907960	0.17	Aromadendrene
79	20.735	5963459	0.35	Isogermaacrene D
80	20.885	1446870	0.08	Cadina-3,5-diene
81	20.993	7435436	0.43	Humulene <alpha->
82	21.175	12180470	0.71	Alloaromadendrene
83	21.228	8705409	0.51	Cadina-4(14),5-diene <cis->
84	21.310	2400517	0.14	Muurola-4(15),5-diene <cis->
85	21.378	960086	0.06	Aristolochene<4,5-di-epi->
86	21.575	35658386	2.08	Muurolene <gamma->
87	21.727	78539078	4.57	Germacrene D
88	21.838	12397531	0.72	Selinene <beta->
89	21.965	10716891	0.62	Muurola-4(14),5-diene <trans->
90	22.066	58579138	3.41	Cubebol <epi->
91	22.154	52916404	3.08	Muurolene <alpha->
92	22.541	119353629	6.95	Cadinene <gamma->
93	22.767	164645781	9.58	Cadinene <delta->
94	22.918	5573908	0.32	Cubebol<10-epi->
95	23.054	15463163	0.90	Cadinene <alpha->
96	23.187	4886094	0.28	Calacorene <alpha->
97	23.349	2216708	0.13	Muurol-5-en-4-beta-ol <cis->
98	23.462	2070464	0.12	Veltonal <(E)-> + Unknown

Peak#	R.Time	Area	Area%	Name
99	23.545	983216	0.06	Muurool-5-en-4-alpha-ol <cis->
100	23.678	4406707	0.26	Calacorene <alpha->
101	23.866	909235	0.05	Amorph-4-ene <1alpha, 10alpha-epoxy->
102	23.962	4779476	0.28	Unknown
103	24.065	23142028	1.35	Germacrene D-4-ol
104	24.174	46642881	2.72	Spathulenol
105	24.266	7146311	0.42	Caryophyllene oxide
106	24.435	2851075	0.17	Unknown
107	24.538	9692806	0.56	Globulol
108	24.944	5152513	0.30	Ledol + Oplophenone<beta-> + Humulene epc
109	25.145	5981394	0.35	Diepicubenol <1,10->
110	25.503	10607750	0.62	Epicubenol
111	25.909	61015469	3.55	T-Muurolol
112	25.996	10159659	0.59	Muurolol <alpha->
113	26.243	37787918	2.20	Cadinol <alpha->
114	26.320	3795745	0.22	Calamenen-10-ol <cis->
115	26.523	3678618	0.21	Calamenen-10-ol <trans->
116	26.650	2148919	0.13	Cadalene
117	26.798	1167395	0.07	Eudesma-4(15),7-dien-1beta-ol
118	26.925	3767724	0.22	Germacra-4(15),5,10(14)-trien-1-alpha-ol
119	27.640	2098105	0.12	Unknown
120	27.936	4349924	0.25	Oplopanone
121	28.463	1403102	0.08	Costol <beta->
122	29.512	930987	0.05	Phytone
		1717869244	100.00	

Kosmetiniai alergenai: \*-silpnas, \*\*-vidutinio stiprumo, \*\*\*- stiprus alergenai

Analiz atliko

dr. Jurga B dien