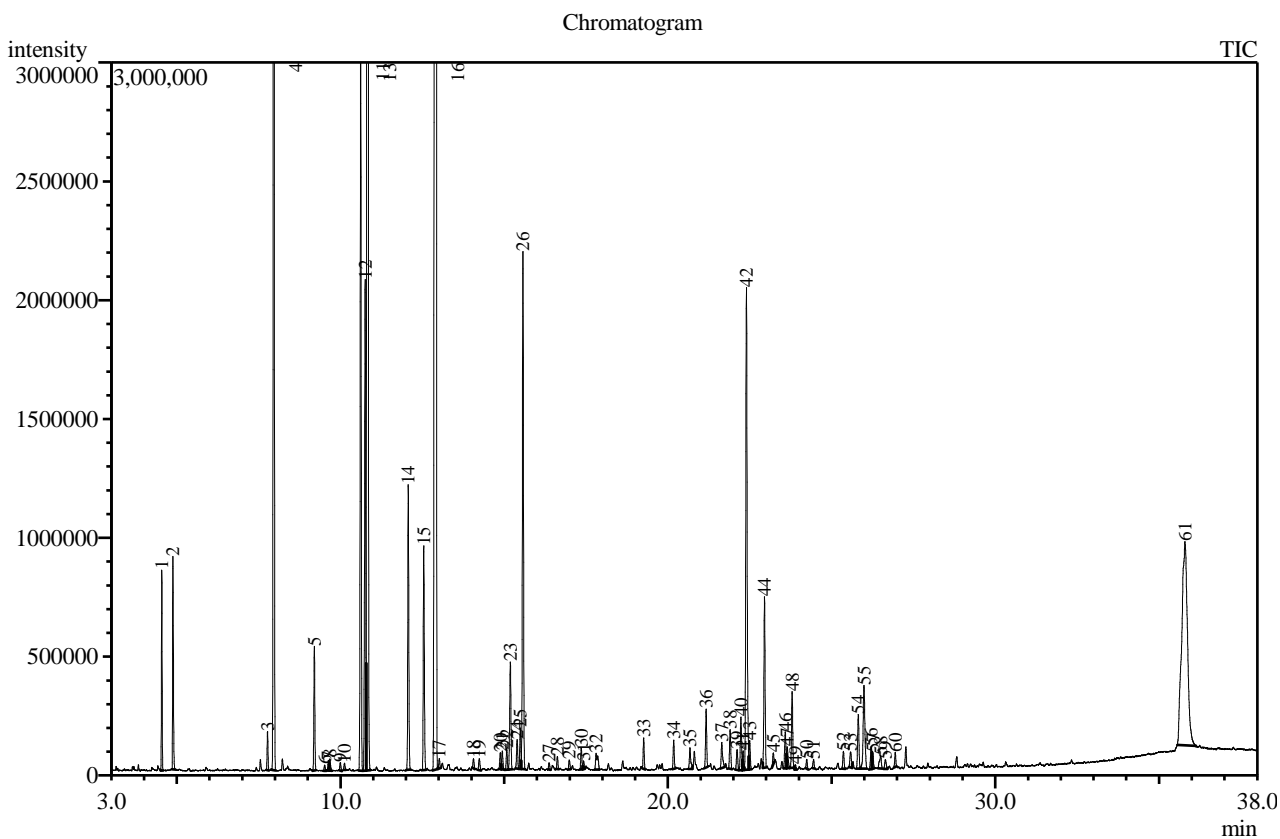


Sample name: Melaleuca ericifolia (Rosalina) (Laukini viržini mirteni eterinis aliejus)

Sample batch num: (B)P39808/PS12001377

Sample origin: Australia

Best before:



Peak Report TIC

Peak#	R.Time	Area	Area%	Name
1	4.543	1234735	0.69	Octane <n->
2	4.883	1412926	0.79	2-Propanol, 1-propoxy-
3	7.773	313752	0.18	Thujene <alpha->
4	7.962	12497363	7.01	Pinene <alpha->
5	9.202	1085120	0.61	Pinene <beta->
6	9.518	52378	0.03	Hept-5-en-2-one <6-methyl->
7	9.627	102713	0.06	Myrcene
8	9.677	104539	0.06	Linalool oxide <dehydro-, trans->
9	9.996	69685	0.04	Mentha-1(7),8-diene <p->
10	10.125	58962	0.03	Linalool oxide <dehydro-, cis->
11	10.617	6756837	3.79	Cymene <para->
12	10.753	4739518	2.66	Limonene*
13	10.825	40908355	22.96	Eucalyptol
14	12.069	2658683	1.49	Linalool oxide <cis->
15	12.543	2194857	1.23	Linalool oxide <trans->
16	12.913	68663280	38.54	Linalool *
17	13.021	96565	0.05	1,5,7-Octatrien-3-ol, 3,7-dimethyl-
18	14.063	91689	0.05	Pinocarveol <trans->
19	14.239	122697	0.07	Verbenol <trans->
20	14.883	171206	0.10	Terpineol <delta->
21	14.945	178065	0.10	Linalool oxide <cis-> (pyranoid)
22	15.079	211161	0.12	Linalool oxide <trans-> (pyranoid)
23	15.188	1196122	0.67	Terpinen-4-ol
24	15.395	280102	0.16	Cymen-8-ol <para->

Peak#	R.Time	Area	Area%	Name
25	15.492	393877	0.22	3,7-Octadiene-2,6-diol, 2,6-dimethyl-
26	15.572	5160150	2.90	Terpineol <alpha->
27	16.373	68206	0.04	2-Cyclohexen-1-ol, 2-methyl-5-(1-methylethyl)-
28	16.625	117984	0.07	Carveol <trans->
29	16.988	92350	0.05	Neral
30	17.354	219563	0.12	Geraniol*
31	17.433	75123	0.04	Phenethyl acetate <2->
32	17.808	319412	0.18	Geranial*
33	19.261	290326	0.16	Geranic acid <methyl-> ester
34	20.180	286312	0.16	3,7-Octadiene-2,6-diol, 2,6-dimethyl-
35	20.674	273783	0.15	Cubebene <alpha->
36	21.169	602545	0.34	Phenethyl ethyl propanoate <2->
37	21.647	321642	0.18	Gurjunene <alpha->
38	21.901	436351	0.24	Caryophyllene
39	22.113	225146	0.13	Maaliene <gamma->
40	22.232	570401	0.32	Gurjunene <beta->
41	22.297	197673	0.11	Maaliene <alpha->
42	22.399	5638784	3.16	Aromadendrene
43	22.499	285273	0.16	Eudesma-6,11-diene<cis->
44	22.952	1818860	1.02	Caryophyllene <9-epi-(E)->
45	23.222	114689	0.06	Gurjunene <gamma->
46	23.584	419070	0.24	Selinene <beta->
47	23.643	271800	0.15	Amorphene <gamma->
48	23.795	818239	0.46	Viridiflorene
49	23.895	54294	0.03	Muurolene <alpha->
50	24.241	90558	0.05	Cadinene <gamma->
51	24.447	83896	0.05	Cadinene <delta->
52	25.363	191671	0.11	Unknown
53	25.582	205318	0.12	Palustrol
54	25.816	651874	0.37	Spathulenol
55	25.990	1331887	0.75	Caryophyllene oxide
56	26.208	273010	0.15	Viridiflorol
57	26.257	172654	0.10	Cubeben-11-ol
58	26.497	210047	0.12	Ledol
59	26.642	121861	0.07	Humulene epoxide II
60	26.943	138111	0.08	Eudesmol <beta->
61	35.794	10432960	5.86	Tetrapentacontane
		178177010	100.00	

Kosmetiniai alergenai: *-silpnas, **-vidutinio stiprumo, ***- stiprus alergenai

Analiz atliko:

dr. Jurga B dien