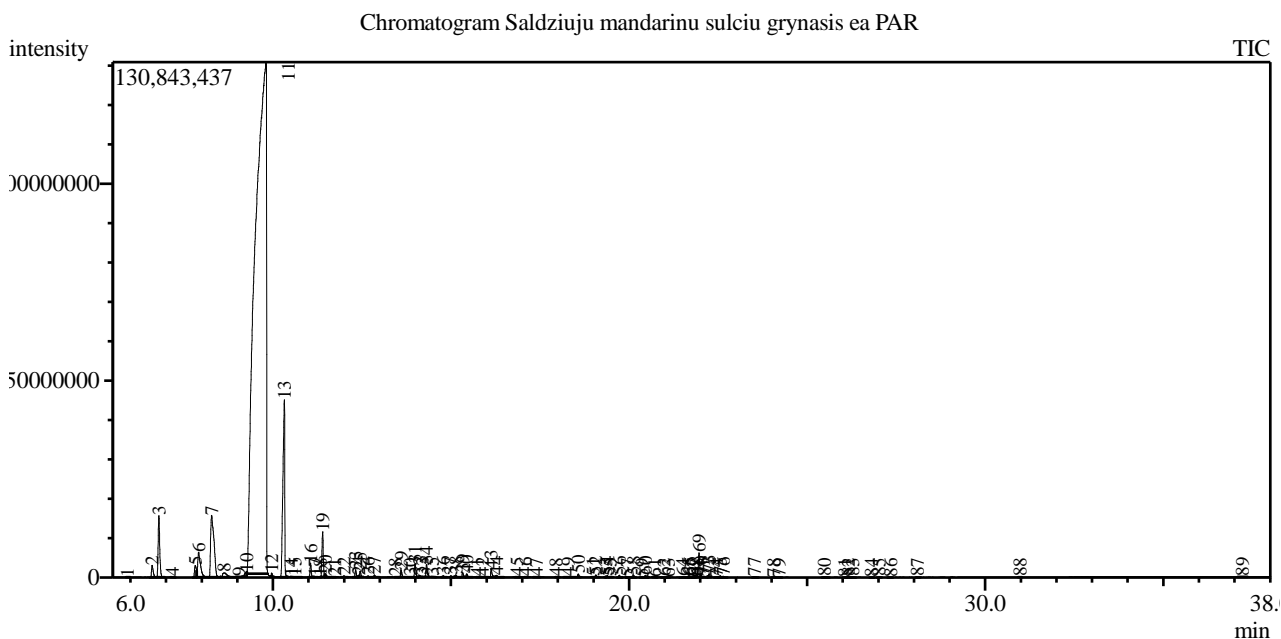


Analysis numb.: GC463
 Analysis date: 2017 05 03
 Sample name: Saldži j mandarin sul i grynasis ea
 Botanical name: Citrus reticulata (Tangerine essece)
 Sample batch num: 02Z15B91
 Sample origin: South Africa Republic
 Best before: 2020 02



Peak Report TIC

Peak#	R.Time	Area	Area%	Name
1	5.913	132846	0.00	Nonane
2	6.609	10053081	0.30	Thujene <alpha->
3	6.797	49077818	1.48	Pinene <alpha->
4	7.173	272648	0.01	Camphene
5	7.820	10897177	0.33	Sabinene
6	7.914	34959114	1.05	Pinene <beta->
7	8.278	101750247	3.07	Myrcene
8	8.635	9418100	0.28	Octanal <n->
9	9.045	1035415	0.03	Terpinene <alpha->
10	9.260	3964336	0.12	Cymene <para->
11	9.807	2793204622	84.19	Limonene*
12	9.966	1730087	0.05	Ocimene <trans-, beta->
13	10.321	158084804	4.76	Terpinene <gamma->
14	10.523	130517	0.00	Sabinene hydrate <cis->
15	10.622	539677	0.02	1-Octanol
16	11.059	8410740	0.25	Terpinolene
17	11.183	290351	0.01	Epoxyterpinene <6,7->
18	11.332	133760	0.00	Undecane
19	11.397	30068364	0.91	Linalool*
20	11.476	3202078	0.10	Nonanal
21	11.731	224094	0.01	Menthatriene <1,3,8-para->
22	11.996	1201779	0.04	Mentha-2,8-dien-1-ol <trans-, para->
23	12.323	4627806	0.14	Limonene oxide <cis->
24	12.404	382269	0.01	Mentha-2,8-dien-1-ol <cis-, para->
25	12.449	3505656	0.11	Limonene oxide <trans->
26	12.672	1188124	0.04	Unknown
27	12.851	1528579	0.05	Citronellal
28	13.442	194402	0.01	1-Nonanol
29	13.603	4649629	0.14	Terpinen-4-ol

Peak#	R.Time	Area	Area%	Name
30	13.867	467296	0.01	Cymen-8-ol <para->
31	13.993	8925842	0.27	Terpineol <alpha->
32	14.123	1694687	0.05	Dodecane
33	14.207	647324	0.02	Terpineol <gamma->
34	14.313	7512916	0.23	Decanal
35	14.477	264103	0.01	Acetate <octyl->
36	14.781	1261181	0.04	Carveol <trans->
37	14.995	1260274	0.04	Citronellol*
38	15.138	2022629	0.06	Thymol methyl ether
39	15.326	3300314	0.10	Neral
40	15.442	2526255	0.08	Carvone
41	15.741	379842	0.01	Geraniol*
42	15.888	769578	0.02	Dec-(2E)-enal
43	16.128	6189525	0.19	Geranial
44	16.282	1702199	0.05	Perillaldehyde
45	16.859	1217838	0.04	Thymol
46	17.092	564059	0.02	Undecanal <n->
47	17.394	592694	0.02	Decadienal <(2E,4E)->
48	17.954	336453	0.01	Elemene <delta->
49	18.284	760684	0.02	Citronellyl acetate
50	18.575	2373301	0.07	Neryl acetate
51	18.989	429238	0.01	Copaene <alpha->
52	19.070	1516615	0.05	Geranyl acetate
53	19.350	176870	0.01	Cubebene <beta->
54	19.387	927300	0.03	Elemene <beta->
55	19.467	316878	0.01	Tetradecane
56	19.729	1515509	0.05	Dodecanal
57	19.953	104964	0.00	Bergamotene <alpha-, cis->
58	20.132	1226700	0.04	Caryophyllene
59	20.362	178271	0.01	Copaene <beta->
60	20.464	1658723	0.05	Bergamotene <alpha-, trans->
61	20.719	116627	0.00	Dodecadienal <(2E,6Z)->
62	20.984	623359	0.02	Humulene <alpha->
63	21.103	64952	0.00	Santalene <beta->
64	21.503	468678	0.01	Unknown
65	21.661	784841	0.02	Germacrene D
66	21.713	1123476	0.03	Selina-4,11-diene
67	21.810	147132	0.00	Selinene <beta->
68	21.897	144310	0.00	Eremophilene
69	21.965	16692938	0.50	Valencene
70	22.017	579829	0.02	Selinene <alpha->
71	22.090	109826	0.00	Bisabolene <(Z)-, alpha->
72	22.207	356152	0.01	Farnesene <(E,E)-, alpha->
73	22.249	2281798	0.07	Bisabolene <beta->
74	22.453	142980	0.00	Nootkatene
75	22.564	1068315	0.03	Selinene <7-epi-alpha->
76	22.640	780588	0.02	Cadinene <delta->
77	23.514	657728	0.02	Germacrene B
78	24.067	158154	0.00	Spathulenol
79	24.209	268817	0.01	Caryophyllene oxide
80	25.485	525968	0.02	Unknown
81	26.057	102268	0.00	Eudesmol <beta->
82	26.162	525457	0.02	Selin-11-en-4-alpha-ol
83	26.276	438715	0.01	Intermedeol<neo->
84	26.808	126834	0.00	Bisabolol <alpha->
85	27.025	238680	0.01	Sinensal <beta->
86	27.349	157087	0.00	Isoaromadendrene epoxide
87	28.092	358786	0.01	Sinensal <alpha->
88	30.976	125116	0.00	Camphorene <m->
89	37.221	876342	0.03	Squalene
		3317723935	100.00	

Kosmetiniai alergenai: *-silpnas, **-vidutinio stiprumo, ***- stiprus alergenai

Analiz atliko

dr. Jurga B dien