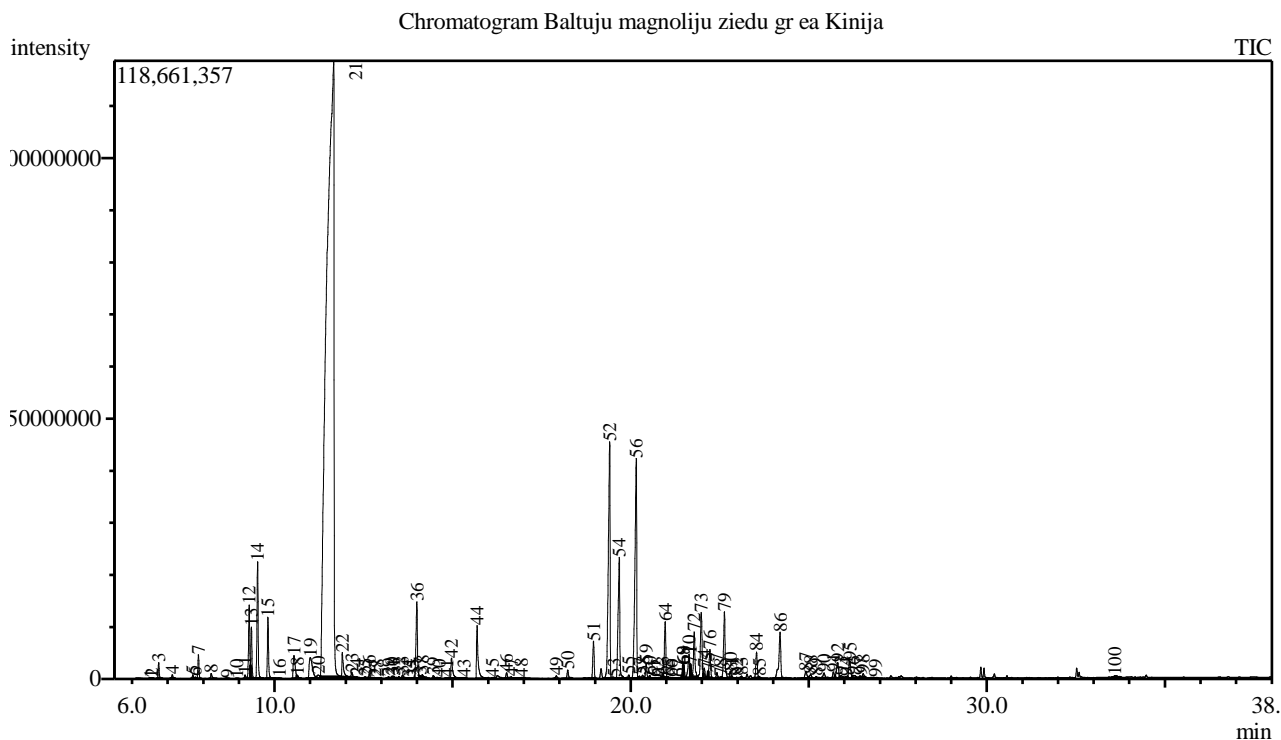


Analysis numb.: GC689
 Analysis date: 2019 03 25
 Sample name: Balt j magnolij žied grynasis ea
 Botanical name: Michelia alba
 Sample batch num: 181206
 Sample origin: Kinja
 Best before: 2022 03



Peak Report TIC

Peak#	R.Time	Area	Area%	Name
1	6.517	106048	0.00	Hexanoate <methyl->
2	6.566	130790	0.00	Thujene <alpha->
3	6.748	5886560	0.22	Pinene <alpha->
4	7.132	1424223	0.05	Camphene
5	7.705	1481111	0.05	Bois de Rose oxide
6	7.773	585789	0.02	Sabinene
7	7.863	9388805	0.34	Pinene <beta->
8	8.221	2676770	0.10	Myrcene
9	8.679	121026	0.00	Linalool oxide <dehydro-, cis->
10	8.942	88071	0.00	Terpinene <alpha->
11	9.172	1656680	0.06	Cymene <para->
12	9.288	32942798	1.21	Limonene*
13	9.351	21460617	0.79	Eucalyptol
14	9.525	50814805	1.86	Ocimene <cis-, beta->
15	9.814	26572293	0.97	Ocimene <trans-, beta->
16	10.133	265176	0.01	Terpinene <gamma->
17	10.546	16886653	0.62	Linalool oxide <cis->
18	10.644	1350360	0.05	Unknown
19	11.004	25187153	0.92	Linalool oxide <trans->
20	11.226	3570100	0.13	Methyl benzoate (Clorius)
21	11.662	1680804291	61.51	Linalool*
22	11.904	13753910	0.50	Phenylethyl alcohol
23	12.171	2463492	0.09	Alloocimene
24	12.307	771228	0.03	Unknown

Peak#	R.Time	Area	Area%	Name
25	12.546	738217	0.03	Myroxide <(E)->
26	12.663	1816765	0.07	Camphor
27	12.817	115782	0.00	Camphene hydrate
28	12.897	510748	0.02	Nerol oxide
29	13.201	1115633	0.04	Benzyl acetate
30	13.300	835004	0.03	Borneol
31	13.348	737878	0.03	Linalool oxide <cis-> (pyranoid)
32	13.491	1225825	0.04	Linalool oxide <trans-> (pyranoid)
33	13.595	1835874	0.07	Terpinen-4-ol
34	13.767	88117	0.00	Hex-(3Z)-enyl butyrate
35	13.879	335778	0.01	Cymen-8-ol <para->
36	13.996	41667148	1.52	Terpineol <alpha->
37	14.087	237526	0.01	Dodecane
38	14.151	1107005	0.04	Estragole (Methyl chavicol)
39	14.459	1775601	0.06	2,6-Dimethyl-3(E),5(E),7-octatriene-2-ol
40	14.620	194233	0.01	Unknown
41	14.843	178048	0.01	Nerol methyl ether
42	14.970	13534623	0.50	Nerol
43	15.316	327984	0.01	Neral
44	15.688	32061874	1.17	Geraniol*
45	16.123	449425	0.02	Geranial
46	16.518	3137459	0.11	Linalool oxide acetate <trans->(pyranoid)
47	16.648	1503627	0.06	Safrole
48	16.932	778200	0.03	Geranyl formate
49	17.914	1340664	0.05	Elemene <delta->
50	18.235	4821367	0.18	Cubebene <alpha->
51	18.958	18646238	0.68	Copaene <alpha->
52	19.411	153041427	5.60	Elemene <beta->
53	19.532	748383	0.03	Jasmone <(Z)->
54	19.680	76644434	2.80	Methyleugenol
55	19.947	1878955	0.07	Bergamotene <alpha-, cis->
56	20.158	148918737	5.45	Caryophyllene <(E)->
57	20.247	1331755	0.05	Ionone <(E)-, alpha->
58	20.336	1758287	0.06	Copaene <beta->
59	20.437	7517448	0.28	Bergamotene <alpha-, trans->
60	20.535	1801654	0.07	Guaiene <alpha->
61	20.660	418750	0.02	Guaiadiene <6,9->
62	20.756	424773	0.02	Santalene <epi-, beta->
63	20.901	464118	0.02	Farnesene <(E)-, beta->
64	20.969	28537703	1.04	Humulene <alpha->
65	21.061	876590	0.03	Santalene <beta->
66	21.139	600373	0.02	Alloaromadendrene + Cadina-1(6),4-diene <<
67	21.333	433931	0.02	Aristolochene <4,5-di-epi->
68	21.476	5840902	0.21	Gurjunene <gamma->
69	21.485	4636002	0.17	Muurolene <gamma->
70	21.637	15573832	0.57	Germacrene D
71	21.673	4021612	0.15	Butyrate <2-methyl-, phenylethyl->
72	21.784	24164717	0.88	Selinene <beta->
73	21.983	41921282	1.53	Methyl isoeugenol <(E)-> + Viridiflorene
74	22.068	5191546	0.19	Muurolene <alpha->
75	22.180	2161743	0.08	Farnesene <(E,E)-, alpha->
76	22.224	15002412	0.55	Bisabolene <beta->
77	22.424	3099359	0.11	Cadinene <gamma->
78	22.531	1142660	0.04	Selinene <7-epi-, alpha->
79	22.634	37754586	1.38	Cadinene <delta->
80	22.797	3735818	0.14	Nerolidol <(Z)->
81	22.849	850847	0.03	Cadina-1,4-diene <trans->
82	22.978	974556	0.04	Cadinene <alpha->
83	23.112	1581716	0.06	Calacorene <alpha->
84	23.534	14248211	0.52	Nerolidol <(E)->
85	23.615	778458	0.03	Calacorene <beta->
86	24.196	35082904	1.28	Caryophyllene oxide
87	24.921	5647903	0.21	Humulene epoxide II
88	25.055	2852892	0.10	Unknown
89	25.207	1403807	0.05	Junenol
90	25.430	4749795	0.17	Epicubenol
91	25.693	3967109	0.15	Phenethyl hexanoate
92	25.816	12137568	0.44	T-Muurolol
93	25.910	2629288	0.10	Muurolol <alpha->

Peak#	R.Time	Area	Area%	Name
94	26.057	1340852	0.05	Cadinol <alpha->
95	26.157	12956521	0.47	Selin-11-en-4-alpha-ol
96	26.247	3565702	0.13	Calamenen-10-ol <cis->
97	26.443	1717136	0.06	Calamenen-10-ol <trans->
98	26.530	1827750	0.07	Caryophyllene <14-hydroxy-9-epi-(E)->
99	26.868	370975	0.01	Germacra-4(15),5,10(14)-trien-1-alpha-ol
100	33.593	2637948	0.10	Squalene
		2732471119	100.00	

Kosmetiniai alergenai: *-silpnas, **-vidutinio stiprumo, ***- stiprus alergenai

Analiz atliko

dr. Jurga B dien