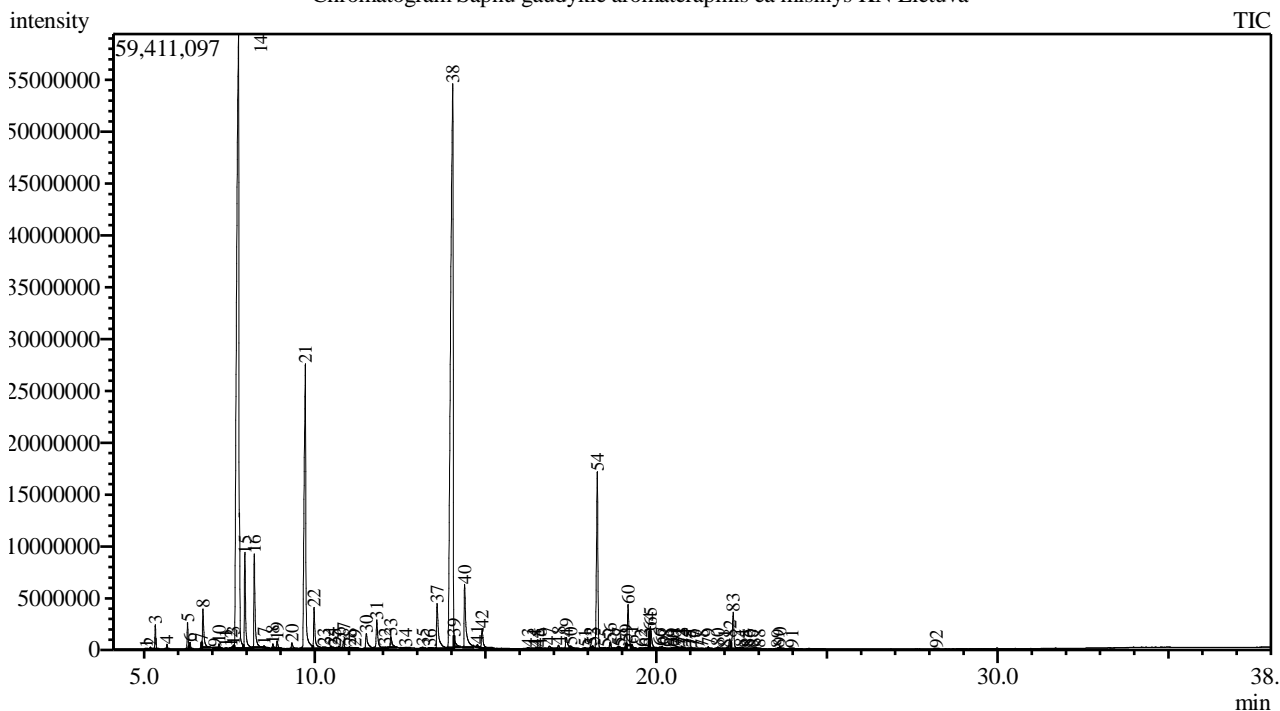


Analysis numb.: GC1721  
 Analysis date: 2024 01 29  
 Sample name: "Sapnu gaudykle" ea misinys  
 Botanical name:  
 Sample batch num: PN24SA24  
 Sample origin: KN Lietuva  
 Best before: 2026 02

Chromatogram Sapnu gaudykle aromaterapinis ea misinys KN Lietuva



Peak Report TIC

Peak#	R.Time	Area	Area%	Name
1	5.069	89298	0.01	Tricyclene
2	5.187	441654	0.05	Thujene <alpha->
3	5.331	4425324	0.47	Pinene <alpha->
4	5.673	942405	0.10	Camphene
5	6.275	5311265	0.56	Sabinene
6	6.347	1420412	0.15	Pinene <beta->
7	6.684	1160026	0.12	1-Octen-3-ol
8	6.725	10656889	1.12	Myrcene
9	7.067	97165	0.01	Phellandrene <alpha->
10	7.198	814362	0.09	Carene <delta-3->
11	7.394	84580	0.01	Terpinene <alpha->
12	7.546	204967	0.02	Cymene <orta->
13	7.619	896368	0.09	Cymene <para->
14	7.768	291709712	30.74	Limonene*
15	7.955	23544140	2.48	Ocimene <(Z)-, beta->
16	8.230	23020325	2.43	Ocimene <(E)-, beta->
17	8.517	552751	0.06	Terpinene <gamma->
18	8.775	1137476	0.12	Sabinene hydrate <cis->
19	8.899	1927470	0.20	Linalool oxide <cis->
20	9.332	1572039	0.17	Linalool oxide <trans->
21	9.725	98478435	10.38	Linalool*
22	9.983	12522725	1.32	Octene <3-acetoxy->
23	10.276	1130010	0.12	Fenchyl alcohol
24	10.476	808579	0.09	Alloocimene

Peak#	R.Time	Area	Area%	Name
25	10.581	473401	0.05	Limonene oxide <cis->
26	10.714	1065932	0.11	Limonene oxide <trans->
27	10.846	1709998	0.18	Camphor
28	11.022	510056	0.05	Necrodol <trans-, alpha->
29	11.185	173926	0.02	Citronellal
30	11.513	6276791	0.66	Borneol
31	11.820	9672919	1.02	Terpinen-4-ol
32	12.062	883057	0.09	Cymen-8-ol <para->
33	12.228	3927213	0.41	Terpineol <alpha->
34	12.661	572224	0.06	Decanal
35	13.168	355985	0.04	Isobornyl formate
36	13.367	816073	0.09	Nerol
37	13.586	17296188	1.82	Neral
38	14.044	279866280	29.49	Linalyl acetate
39	14.083	2401329	0.25	Geraniol*
40	14.390	21841323	2.30	Geranial
41	14.767	605550	0.06	Bornyl acetate
42	14.904	6497971	0.68	Lavandulyl acetate
43	16.252	351703	0.04	Unknown
44	16.453	146796	0.02	Elemene <beta->
45	16.531	374692	0.04	Unknown
46	16.611	490112	0.05	Unknown
47	16.874	1118489	0.12	Neryl acetate
48	17.142	840935	0.09	Copaene <alpha->
49	17.370	4491065	0.47	Geranyl acetate
50	17.506	1196316	0.13	Sesquithujene <7-epi->
51	17.910	284317	0.03	Funebrene <alpha->
52	18.081	580159	0.06	Cedrene <alpha->
53	18.144	793017	0.08	Bergamotene <alpha-, cis->
54	18.277	49289796	5.19	Caryophyllene
55	18.503	349304	0.04	Copaene <beta->
56	18.654	1921424	0.20	Bergamotene <alpha-, trans->
57	18.895	279506	0.03	Aromadendrene + Unknown
58	18.953	254851	0.03	Santalene <beta->
59	19.114	1199698	0.13	Humulene <alpha->
60	19.177	11056036	1.17	Farnesene <(E)-, beta->
61	19.291	1332892	0.14	Alloaromadendrene
62	19.551	118934	0.01	Acoradiene <beta->
63	19.683	464583	0.05	Geranyl propanoate + Muurolene <gamma->
64	19.807	2548833	0.27	Germacrene D
65	19.832	7856873	0.83	Curcumene <alpha->
66	20.096	496982	0.05	Valencene
67	20.177	779437	0.08	Bicyclgermacrene
68	20.276	191273	0.02	Muurolene <alpha->
69	20.471	464793	0.05	Bisabolene <beta->
70	20.548	83688	0.01	Curcumene <beta->
71	20.606	271581	0.03	Cadinene <gamma->
72	20.675	433767	0.05	Cubebol
73	20.750	783428	0.08	Teresantalol
74	20.824	591928	0.06	Cadinene <delta->
75	20.974	226944	0.02	Unknown
76	21.065	240049	0.03	Unknown
77	21.171	73406	0.01	Cadinene <alpha->
78	21.333	54421	0.01	Germacrene B
79	21.529	678709	0.07	Unknown
80	21.809	721245	0.08	Nerolidol <(E)->
81	22.007	199005	0.02	Sesquisabinene hydrate <trans->
82	22.157	2858720	0.30	Spathulenol
83	22.257	12179210	1.28	Caryophyllene oxide
84	22.500	278540	0.03	Salvial-4(14)-en-1-one
85	22.620	187484	0.02	Unknown
86	22.711	140351	0.01	Cedrol
87	22.863	488619	0.05	Humulene epoxide II
88	23.000	179373	0.02	Diepicubenol <1,10->
89	23.559	175940	0.02	Caryophylla-4(12),8(13)-dien -5-alpha-ol
90	23.623	753774	0.08	Cadinol <epi-alpha->
91	23.980	136470	0.01	Cadinol <alpha->
92	28.204	94926	0.01	Phytone
		948998987	100.00	



Analiz atliko

dr. Jurga B. dien