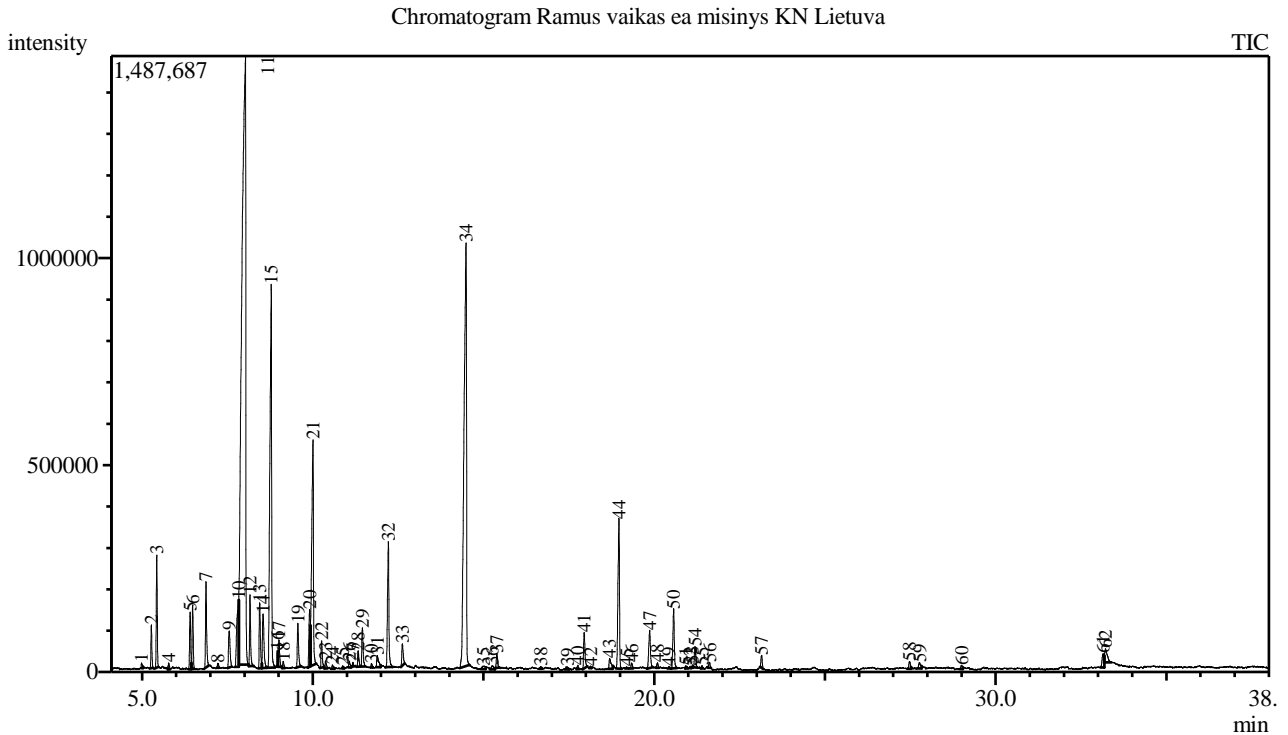


Analysis numb.: GC1898
 Analysis date: 2024 09 02
 Sample name: Ramus vaikas ea misinys
 Botanical name:
 Sample batch num: PN24RU21
 Sample origin: KN Lietuva
 Best before: 2026 09



Peak Report TIC

Peak#	R.Time	Area	Area%	Name
1	4.987	28481	0.09	Isobutyrate <isobutyl->
2	5.273	200309	0.62	Thujene <alpha->
3	5.433	528091	1.64	Pinene <alpha->
4	5.781	34219	0.11	Camphene
5	6.409	303974	0.95	Sabinene
6	6.484	320698	1.00	Pinene <beta->
7	6.875	471382	1.47	Myrcene
8	7.220	26519	0.08	Phellandrene <alpha->
9	7.552	274359	0.85	Terpinene <alpha->
10	7.833	597576	1.86	Cymene <para->
11	8.032	11944807	37.14	Limonene*
12	8.164	365869	1.14	Ocimene <(Z)-, beta->
13	8.448	387754	1.21	Ocimene <(E)-, beta->
14	8.548	407959	1.27	Angelate <isobutyl->
15	8.787	3249590	10.10	Terpinene <gamma->
16	8.975	48729	0.15	Artemisia ketone
17	9.009	181552	0.56	Sabinene hydrate <cis->
18	9.137	35664	0.11	Linalool oxide <cis->
19	9.566	267078	0.83	Terpinolene
20	9.911	397179	1.23	Sabinene hydrate <trans->
21	10.008	1883373	5.86	Linalool*
22	10.260	157115	0.49	1-Octen-3-yl-acetate
23	10.379	51514	0.16	3-Methyl pentyl isobutyrate
24	10.576	27819	0.09	Menth-2-en-1-ol <cis-, para->

Peak#	R.Time	Area	Area%	Name
25	10.878	14583	0.05	Limonene oxide <cis->
26	11.071	38854	0.12	Pinocarveol <trans->
27	11.177	20000	0.06	Camphor
28	11.332	97138	0.30	Isoamyl angelate
29	11.455	238048	0.74	Angelate <2-methylbutyl->
30	11.717	21294	0.07	Pinocarvone
31	11.892	109929	0.34	Borneol
32	12.216	855796	2.66	Terpinen-4-ol
33	12.628	151070	0.47	Terpineol <alpha->
34	14.492	5145733	16.00	Linalyl acetate
35	15.000	41360	0.13	Ascaridol glycol <trans->
36	15.253	42424	0.13	Bornyl acetate
37	15.395	89982	0.28	Lavandulyl acetate
38	16.678	18496	0.06	Elemene <delta->
39	17.453	29752	0.09	Neryl acetate
40	17.765	21951	0.07	Copaene <alpha->
41	17.952	237154	0.74	Geranyl acetate
42	18.142	12009	0.04	Cubebene <beta-> + Sesquithujene <7-epi->
43	18.696	102129	0.32	Anthranilate <methyl-, N-methyl->
44	18.969	1112368	3.46	Caryophyllene
45	19.197	12804	0.04	Copaene <beta->
46	19.341	34744	0.11	Bergamotene <alpha-, trans->
47	19.870	314106	0.98	Humulene <alpha-> + Farnesene <(E)-, beta->
48	20.098	29117	0.09	Myrtenyl isobutyrate
49	20.431	11317	0.04	Muurolene <gamma->
50	20.572	413545	1.29	Germacrene D
51	20.928	20827	0.06	Viridiflorene + Bicyclogermacrene
52	21.056	8911	0.03	Muurolene <alpha->
53	21.122	13802	0.04	Unknown
54	21.198	143085	0.44	Farnesene <(E,E)-, alpha->
55	21.402	14457	0.04	Cadinene <gamma->
56	21.622	33553	0.10	Cadinene <delta->
57	23.148	77053	0.24	Caryophyllene oxide
58	27.479	58119	0.18	Sinensal <alpha->
59	27.776	56281	0.17	Benzyl benzoate*
60	29.002	27796	0.09	Farnesyl acetate
61	33.150	132825	0.41	
62	33.218	168828	0.52	
		32162850	100.00	

Kosmetiniai alergenai: *-silpnas, **-vidutinio stiprumo, ***- stiprus alergenai

Analiz atliko

dr. Jurga B dien