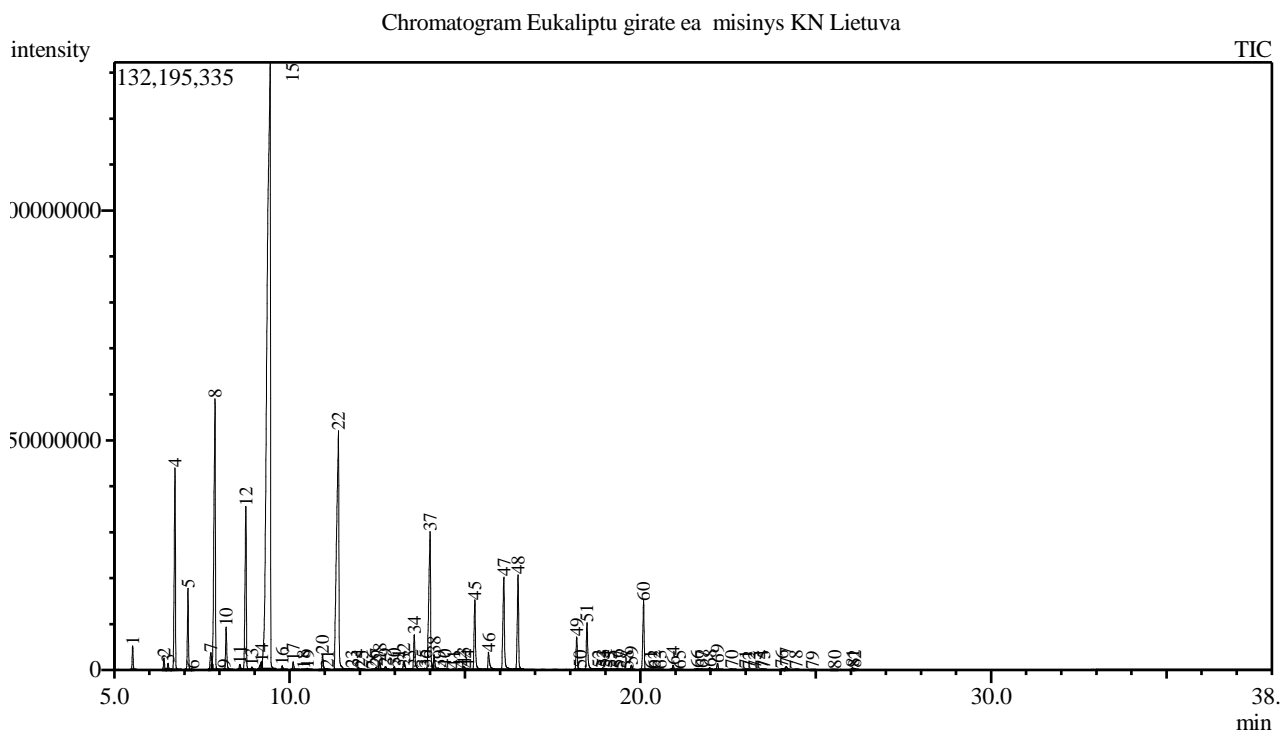


Analysis numb.: GC754
 Analysis date: 2019 09 23
 Sample name: Eukalipt girait ea mišinys
 Botanical name:
 Sample batch num: PN19GE21
 Sample origin: Lietuva
 Best before: 2021 06



Peak Report TIC

Peak#	R.Time	Area	Area%	Name
1	5.524	9644759	0.47	Santene
2	6.416	5123681	0.25	Tricyclene
3	6.533	3106095	0.15	Thujene <alpha->
4	6.732	103571847	5.02	Pinene <alpha->
5	7.101	35994523	1.74	Camphene
6	7.237	125416	0.01	Thuja-2,4(10)-diene
7	7.753	11127087	0.54	Sabinene
8	7.873	174141976	8.44	Pinene <beta->
9	8.123	297638	0.01	5-Hepten-2-one <6-methyl->
10	8.188	21517532	1.04	Myrcene
11	8.580	3136975	0.15	Phellandrene <alpha->
12	8.751	91422096	4.43	Carene <delta-3->
13	8.923	1742403	0.08	Terpinene <alpha->
14	9.207	5077899	0.25	Cymene <para->
15	9.446	882271838	42.76	Eucalyptol
16	9.790	1952419	0.09	Ocimene <trans-, beta->
17	10.101	3994411	0.19	Terpinene <gamma->
18	10.397	190903	0.01	Sabinene hydrate <cis->
19	10.506	905748	0.04	Linalool oxide <cis->
20	10.941	8722899	0.42	Terpinolene
21	11.073	549004	0.03	Camphenone <6->
22	11.392	237287747	11.50	Linalool*
23	11.772	432529	0.02	Fenchol <endo->
24	11.964	1261802	0.06	Menth-2-en-1-ol <cis-, para->

Peak#	R.Time	Area	Area%	Name
25	12.057	291270	0.01	Pinene hydrate <trans-> + Campholenal <alp
26	12.371	216284	0.01	Mentha-2,8-dien-1-ol <cis-, para->
27	12.469	1541710	0.07	Pinocarveol <trans-> + Ment-2-en-1-ol <tra
28	12.570	4188908	0.20	Camphor
29	12.733	2175356	0.11	Camphene hydrate + Heptalactone <gamma->
30	12.984	1585470	0.08	Isoborneol
31	13.105	767551	0.04	Isogeranial <(Z)->
32	13.259	5775803	0.28	Terpineol <delta-> + Borneol
33	13.423	418717	0.02	Pinocamphone <cis->
34	13.554	21834208	1.06	Terpinen-4-ol
35	13.794	1028889	0.05	Cryptone
36	13.877	754154	0.04	Cymen-8-ol <para->
37	14.005	107674176	5.22	Terpineol <alpha->
38	14.120	9910692	0.48	Estragole
39	14.267	1469611	0.07	Decanal
40	14.422	1736895	0.08	Piperitol <trans->
41	14.675	427861	0.02	Fenchyl acetate
42	14.859	596345	0.03	2-Hydroxycineole
43	14.961	3003842	0.15	Nerol
44	15.080	1279931	0.06	Thymol methyl ether
45	15.282	44167606	2.14	Neral
46	15.670	13829350	0.67	Geraniol*
47	16.108	64590435	3.13	Geranial
48	16.512	55074647	2.67	Bornyl acetate
49	18.187	18467162	0.90	Terpinyl acetate <alpha->
50	18.280	827363	0.04	Longipinene <alpha->
51	18.479	30767172	1.49	Eugenol**
52	18.810	205974	0.01	Ylangene <alpha->
53	18.930	849832	0.04	Copaene <alpha->
54	19.018	278965	0.01	Geranyl acetate
55	19.146	686496	0.03	Cinnamate <(E)-, methyl->
56	19.334	735797	0.04	Elemene <beta->
57	19.416	145730	0.01	Tetradecane
58	19.620	438184	0.02	Gurjunene <alpha->
59	19.743	2578117	0.12	Longifolene
60	20.092	39528328	1.92	Caryophyllene <(E)->
61	20.289	408309	0.02	Unknown
62	20.401	469491	0.02	Bergamotene <alpha-, trans->
63	20.568	163395	0.01	Aromadendrene
64	20.933	2679891	0.13	Humulene <alpha->
65	21.112	268999	0.01	Alloaromadendrene
66	21.610	917369	0.04	Germacrene D
67	21.754	521218	0.03	Selinene <beta->
68	21.979	1480429	0.07	Bicyclogermacrene
69	22.201	3766908	0.18	Bisabolene <beta->
70	22.595	566754	0.03	Cadinene <delta->
71	22.999	508872	0.02	Bisabolene <(E)-, alpha->
72	23.103	87460	0.00	Calacorene <alpha->
73	23.259	168271	0.01	Elemol <alpha->
74	23.461	155224	0.01	Germacrene B
75	23.517	296215	0.01	Nerolidol <(E)->
76	24.033	1177828	0.06	Spathulenol
77	24.159	2514388	0.12	Caryophyllene oxide
78	24.436	285142	0.01	Viridiflorol
79	24.903	254462	0.01	Humulene epoxide II
80	25.537	652005	0.03	Eudesmol <gamma->
81	26.048	1462321	0.07	Eudesmol <beta->
82	26.115	868331	0.04	Eudesmol <alpha->
		2063121340	100.00	

Kosmetiniai alergenai: *-silpnas, **-vidutinio stiprumo, ***- stiprus alergenai

Analiz atliko

dr. Jurga B dien