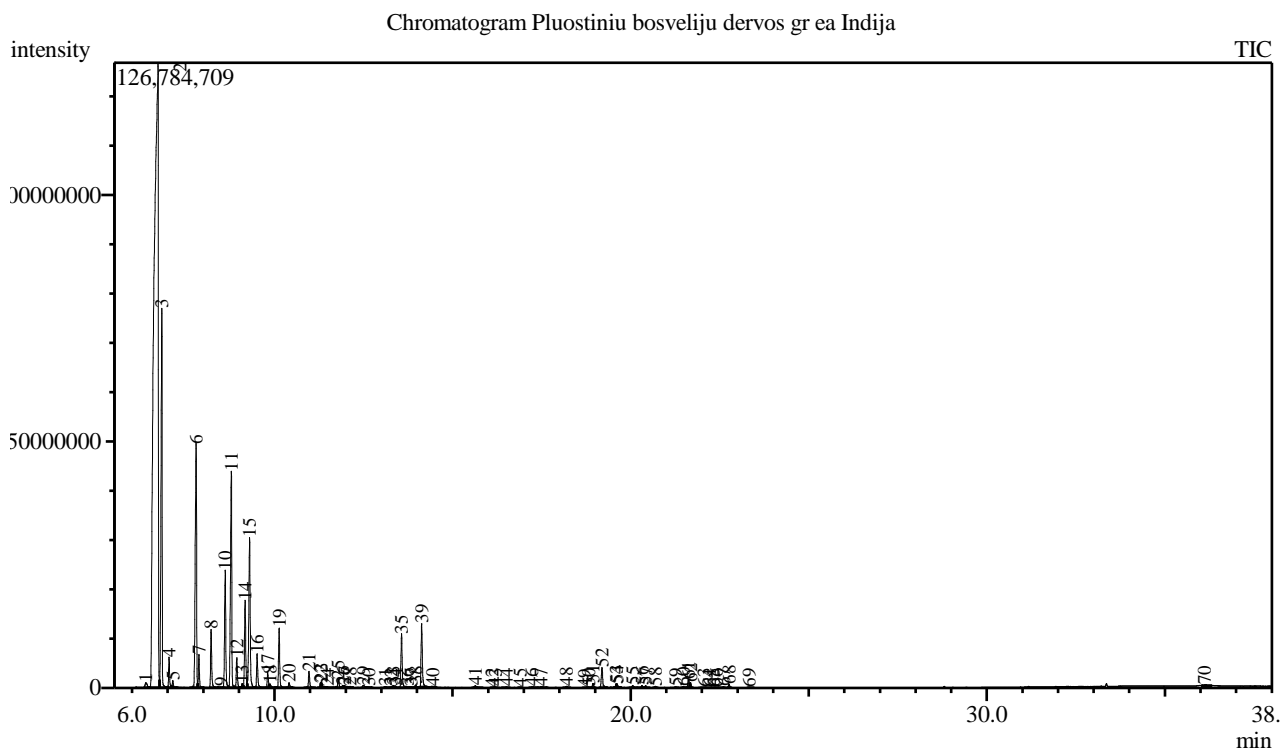


Analysis numb.: GC622
 Analysis date: 2018 12 03
 Sample name: Pluoštini bosvelij dervos grynasis ea
 Botanical name: Boswellia serrata (Frankincense)
 Sample batch num: 20181116008
 Sample origin: Indija
 Best before: 2021 11



Peak Report TIC

Peak#	R.Time	Area	Area%	Name
1	6.388	3961606	0.21	Unkown
2	6.728	1056589407	55.34	Thujene <alpha>
3	6.836	174418661	9.14	Pinene <alpha->
4	7.040	12052542	0.63	Thuja-2,4(10)-diene
5	7.146	2880091	0.15	Camphene
6	7.799	130451515	6.83	Sabinene
7	7.878	12935772	0.68	Pinene <beta->
8	8.220	26009404	1.36	Myrcene
9	8.495	485352	0.03	Carene <delta-2->
10	8.617	56840614	2.98	Phellandrene <alpha->
11	8.788	107568620	5.63	Carene <delta-3->
12	8.943	13690293	0.72	Terpinene <alpha->
13	9.092	2079788	0.11	Cymene <orta->
14	9.175	41967549	2.20	Cymene <para->
15	9.300	82941735	4.34	Limonene*
16	9.511	15508594	0.81	Ocimene <cis-, beta->
17	9.809	6846955	0.36	Ocimene <trans-, beta->
18	9.870	2287493	0.12	Unknown
19	10.130	27276657	1.43	Terpinene <gamma->
20	10.408	2492474	0.13	Sabinene hydrate <cis->
21	10.969	8464487	0.44	Terpinolene
22	11.300	1137106	0.06	Sabinene hydrate <trans->
23	11.316	2861711	0.15	Linalool*
24	11.483	753558	0.04	Thujone <alpha->

Peak#	R.Time	Area	Area%	Name
25	11.791	4923350	0.26	Thujone <beta->
26	11.915	1181961	0.06	Unknown
27	11.966	1735912	0.09	Menth-2-en-1-ol <cis-, para->
28	12.122	840982	0.04	Allocimene
29	12.501	1791872	0.09	Pinocarveol <trans->
30	12.644	635368	0.03	Verbenol <trans->
31	13.104	839556	0.04	Mentha-1,5-dien-8-ol <para->
32	13.270	316951	0.02	Borneol
33	13.333	830712	0.04	Sabinol <trans->
34	13.403	392699	0.02	Umbellulone
35	13.569	27956696	1.46	Terpinen-4-ol
36	13.726	548649	0.03	Thuj-3-en-10-al
37	13.839	567985	0.03	Cymen-8-ol <para->
38	13.961	1430510	0.07	Terpineol <alpha->
39	14.131	32109617	1.68	Estragole
40	14.437	381510	0.02	Piperitol <cis->
41	15.638	1680500	0.09	Linalyl acetate
42	16.112	284747	0.01	(1,2,3-Trimethyl-cyclopent-2-enyl)-methanol
43	16.197	344556	0.02	Ascaridol glycol<trans->
44	16.514	369624	0.02	Bornyl acetate
45	16.888	127738	0.01	Carvacrol + Terpinen-4-ol acetate
46	17.229	683164	0.04	Unknown
47	17.482	1000784	0.05	Unknown
48	18.198	900061	0.05	Terpinyl acetate <alpha->
49	18.702	119865	0.01	Cyclosativene
50	18.824	264766	0.01	Ylangene <alpha->
51	18.944	2217310	0.12	Copaene <alpha->
52	19.196	11454096	0.60	Bourbonene <beta->
53	19.597	953589	0.05	Longipinene <beta->
54	19.614	1860182	0.10	Methyleugenol
55	20.058	1463359	0.08	Ylangene <beta->
56	20.320	1148035	0.06	Copaene <beta->
57	20.423	1071024	0.06	Bergamotene <alpha-, trans->
58	20.695	770023	0.04	Isogermacrene D
59	21.269	437272	0.02	Muurola-4(14),5-diene <cis->
60	21.483	601988	0.03	Murolene <gamma->
61	21.622	4280742	0.22	Germacrene D
62	21.680	2468157	0.13	Unknown
63	22.057	179761	0.01	Murolene <alpha->
64	22.217	103321	0.01	Bisabolene <beta->
65	22.317	147804	0.01	BHT
66	22.412	224388	0.01	Cadinene <gamma->
67	22.605	465131	0.02	Cadinene <delta->
68	22.764	1663672	0.09	Kessane
69	23.330	301791	0.02	Elemicin
70	36.112	2724855	0.14	Unknown
		1909298619	100.00	

Kosmetiniai alergenai: *-silpnas, **-vidutinio stiprumo, ***- stiprus alergenai

Analiz atliko

dr. Jurga B dien