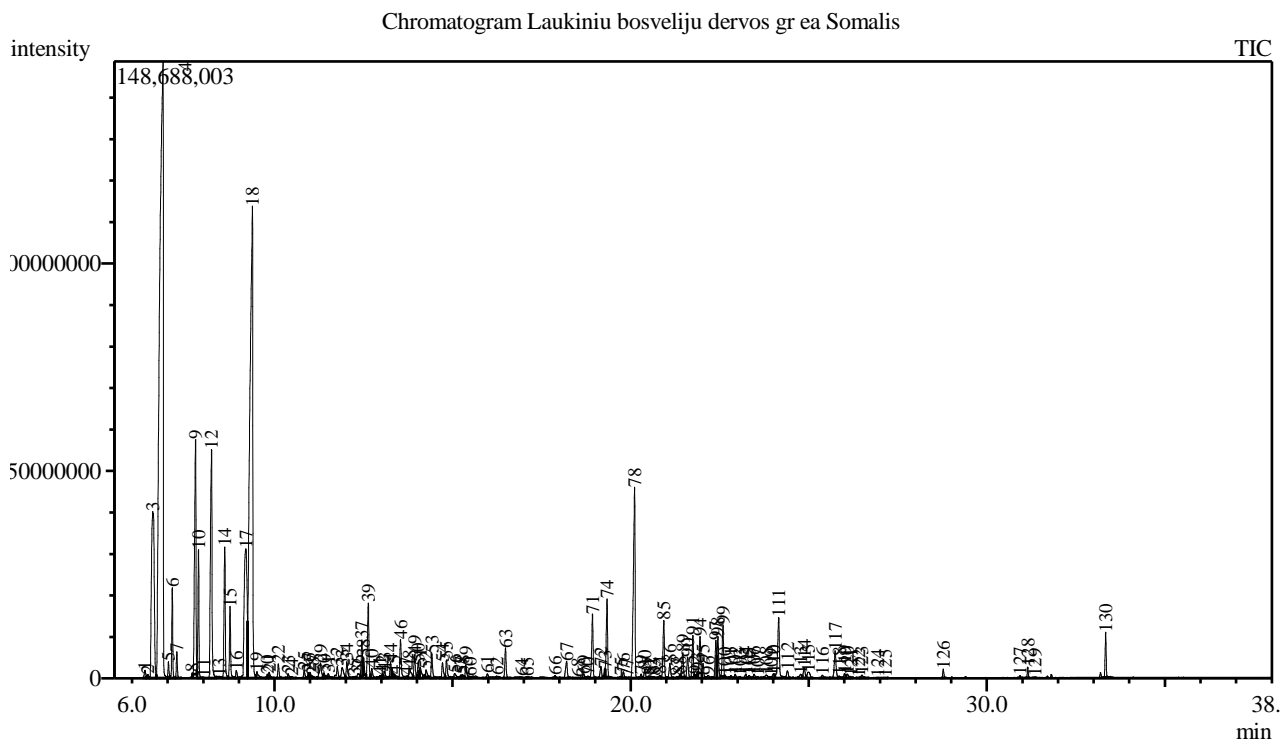


Analysis numb.: GC617  
 Analysis date: 2018 11 14  
 Sample name: Laukini bosvelij dervos grynasis ea  
 Botanical name: Boswellia carterii (Francincense)  
 Sample batch num: 0022269  
 Sample origin: Somalis  
 Best before: 2020 02



Peak Report TIC

Peak#	R.Time	Area	Area%	Name
1	6.361	5464801	0.15	Unknown
2	6.438	2607874	0.07	Tricyclene
3	6.579	217575893	5.85	Thujene <alpha->
4	6.867	1029112248	27.65	Pinene <alpha->
5	7.023	7782463	0.21	Thuja-2,4(10)-diene
6	7.130	40156693	1.08	Camphene
7	7.258	12512873	0.34	Thuja-2,4(10)-diene
8	7.689	2537645	0.07	Cyclopentene <3,5-dimethylene-1,4,4-trimet
9	7.782	155307245	4.17	Sabinene
10	7.867	61704633	1.66	Pinene <beta->
11	8.023	670020	0.02	Pinane <cis->
12	8.231	172753697	4.64	Myrcene
13	8.450	145399	0.00	Carane
14	8.603	77977921	2.10	Phellandrene <alpha->
15	8.752	37958960	1.02	Carene <delta-3->
16	8.929	5107357	0.14	Terpinene <alpha->
17	9.195	171042844	4.60	Cymene <para->
18	9.380	629270709	16.91	Limonene*
19	9.507	6794506	0.18	Ocimene <cis-, beta->
20	9.801	2335757	0.06	Ocimene <trans-, beta->
21	9.850	4223621	0.11	Unknown
22	10.108	8902270	0.24	Terpinene <gamma->
23	10.382	2711887	0.07	Sabinene hydrate <cis->
24	10.481	1373890	0.04	Unknown

Peak#	R.Time	Area	Area%	Name
25	10.834	4648909	0.12	Linalool oxide <trans->
26	10.949	3312167	0.09	Terpinolene
27	10.999	3648965	0.10	Cymene <para->
28	11.074	1932520	0.05	Epoxyterpinene<6,7->
29	11.294	14101746	0.38	Linalool* + Isopentyl 2-methyl butanoate
30	11.390	3488165	0.09	Butanoic acid <3-methyl-, 3-methylbutyl-> e
31	11.509	2221073	0.06	Unknown
32	11.763	9698835	0.26	Thujone <trans->
33	11.902	11465407	0.31	Mentha-2,8-dien-1-ol <trans-, para->
34	12.031	12204149	0.33	Campholenal <alpha->
35	12.242	906048	0.02	Limonene oxide <cis->
36	12.340	4921584	0.13	Mentha-2,8-dien-1-ol <cis-, para->
37	12.452	22489236	0.60	Pinocarveol <trans->
38	12.499	8800133	0.24	Verbenol <cis->
39	12.634	49723733	1.34	Verbenol <trans->
40	12.732	7292308	0.20	Mentha-1,5-dien-8-ol <para->
41	12.958	2462917	0.07	Sabina ketone
42	13.029	2545872	0.07	Pinocamphone <trans->
43	13.089	5470509	0.15	Pinocarvone
44	13.257	9576250	0.26	Mentha-1,5-dien-8-ol <para->
45	13.367	2275432	0.06	Umbellulone
46	13.539	26123034	0.70	Terpinen-4-ol
47	13.704	1930799	0.05	Thuj-3-en-10-al
48	13.792	10563301	0.28	Cymene-8-ol
49	13.931	15605092	0.42	Terpineol <alpha->
50	14.038	10296728	0.28	Myrtenal
51	14.094	9183787	0.25	Myrtenol
52	14.254	5649099	0.15	Sabinol <trans->
53	14.417	16169330	0.43	Verbenone
54	14.717	12001522	0.32	Carveol <trans->
55	14.829	12495633	0.34	Decyl <methyl-> ether
56	15.058	4931048	0.13	Carveol <cis->
57	15.227	1764866	0.05	Isovalerate <hexyl->
58	15.281	2907764	0.08	Cuminaldehyde
59	15.370	8973291	0.24	Carvone
60	15.487	1723992	0.05	Carvotanacetone
61	15.977	3840034	0.10	3,5-Dimethoxytoluene
62	16.241	2604557	0.07	Unknown
63	16.486	18356620	0.49	Bornyl acetate
64	16.935	1781576	0.05	Perilla alcohol
65	17.098	2065175	0.06	Thymol
66	17.878	2391942	0.06	Elemene <delta->
67	18.201	14094965	0.38	Cubebene <alpha->
68	18.522	965102	0.03	Neryl acetate
69	18.680	3325991	0.09	Cyclosativene
70	18.799	1541139	0.04	Ylangene <alpha->
71	18.929	40540170	1.09	Copaene <alpha->
72	19.167	9325005	0.25	Bourbonene <beta->
73	19.280	2682909	0.07	Cubebene <beta->
74	19.336	50921233	1.37	Elemene <beta->
75	19.729	1756888	0.05	Caryophyllene <(Z)->
76	19.799	4006067	0.11	Gurjunene <alpha->
77	19.904	592697	0.02	Bergamotene <alpha-, cis->
78	20.110	150668035	4.05	Caryophyllene <(E)->
79	20.294	2783036	0.07	Copaene <beta->
80	20.398	5866585	0.16	Bergamotene <alpha-, trans->
81	20.496	1329684	0.04	Guaiene <alpha->
82	20.555	1426078	0.04	Aromadendrene
83	20.662	1936032	0.05	Isogermaacrene D
84	20.820	2252555	0.06	Muurola-3,5-diene<trans->
85	20.931	38677901	1.04	Humulene <alpha->
86	21.101	11086237	0.30	Alloaromadendrene
87	21.301	1560096	0.04	Aristolochene <4,5-di-epi->
88	21.380	1135573	0.03	Cadina-1(6),4-diene<trans->
89	21.462	17632335	0.47	Murolene <gamma->
90	21.600	14866061	0.40	Germacrene D
91	21.746	26218899	0.70	Selinene <beta->
92	21.806	702715	0.02	Guaiene <cis-beta->
93	21.879	2346686	0.06	Muurola-4(14),5-diene<trans->

Peak#	R.Time	Area	Area%	Name
94	21.948	24894141	0.67	Selinene <alpha->
95	22.033	9564278	0.26	Muurolene <alpha->
96	22.178	2645414	0.07	Bulnesene <alpha->
97	22.394	27177676	0.73	Cadinene <gamma->
98	22.451	26436569	0.71	Cubebol
99	22.592	31827869	0.86	Cadinene <delta->
100	22.647	582876	0.02	Zonarene
101	22.815	1751139	0.05	Cadina-1,4-diene <trans->
102	22.938	2876683	0.08	Cadinene <alpha->
103	23.075	1175902	0.03	Calacorene <alpha->
104	23.232	2762681	0.07	Elemol <alpha->
105	23.326	2266377	0.06	Unknown
106	23.466	3043516	0.08	Nerolidol <(E)-> + Unknown
107	23.573	1091938	0.03	Calacorene <beta->
108	23.810	5052116	0.14	Palustrol
109	23.938	783921	0.02	Germacrene D-4-ol
110	24.016	3808031	0.10	Spathulenol
111	24.157	50456121	1.36	Caryophyllene oxide
112	24.403	6142974	0.17	Viridiflorol
113	24.774	4553545	0.12	Copaborneol
114	24.874	8575039	0.23	Humulene epoxide II
115	24.988	8020674	0.22	Cubenol <1,10-di-epi-> +Eudesmol <10-epi->
116	25.384	3788296	0.10	Epicubenol
117	25.743	23435806	0.63	Cadinol <epi-, alpha->
118	25.862	1493964	0.04	T-Muurolol + Muurolol <alpha->
119	26.009	3409025	0.09	Eudesmol <beta->
120	26.084	3709429	0.10	Cadinol <alpha->
121	26.185	898191	0.02	Calamenen-10-ol <cis->
122	26.400	663090	0.02	Calamenen-10-ol <trans->
123	26.496	3687927	0.10	Unknown
124	26.939	639037	0.02	Shyobunol
125	27.157	217985	0.01	Calamenen-10-one <10-nor->
126	28.779	4459582	0.12	Unknown
127	30.935	1112224	0.03	Camphorene <m->
128	31.151	4968553	0.13	Neocembrene
129	31.357	529124	0.01	Camphorene <p->
130	33.338	22727545	0.61	Unknown
		3722046286	100.00	

Kosmetiniai alergenai: \*-silpnas, \*\*-vidutinio stiprumo, \*\*\*- stiprus alergenai

Analiz atliko

dr. Jurga B dien