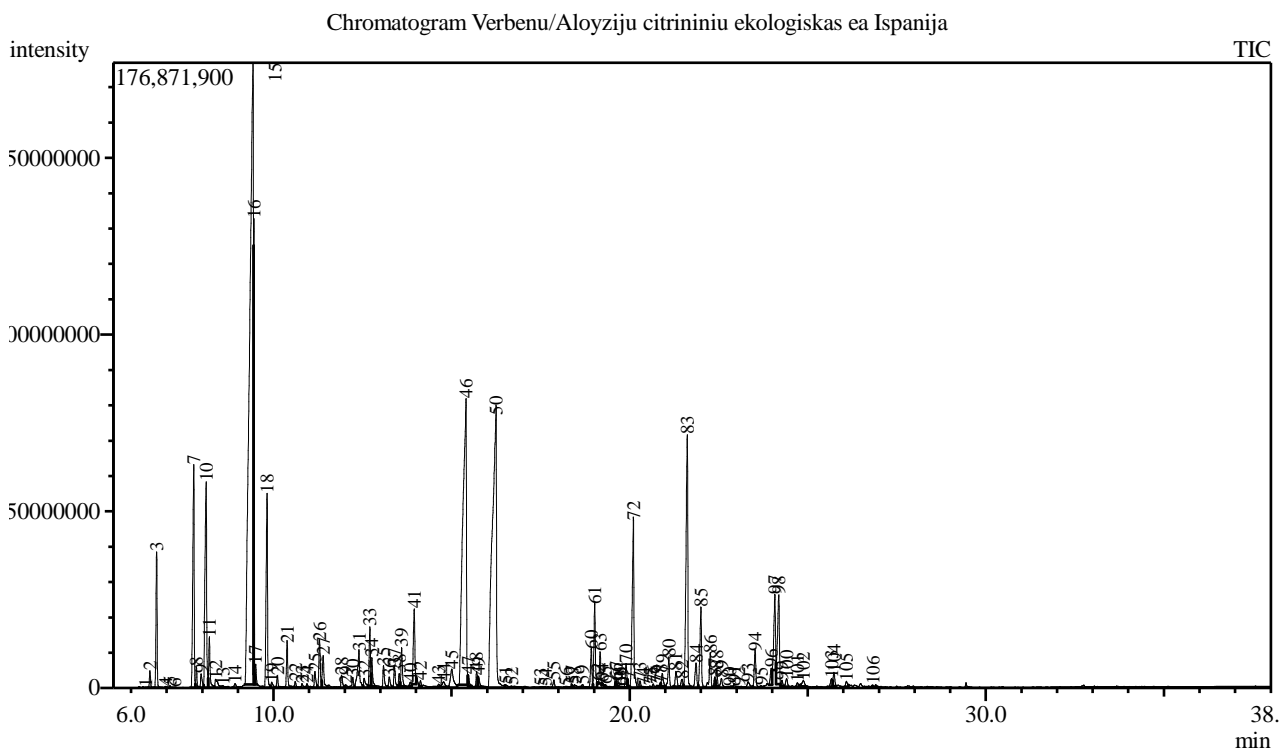


Analysis numb.: GC613
 Analysis date: 2018 10 15
 Sample name: Verben /Aloyzij citrinini ea
 Botanical name: Lippia citriodora
 Sample batch num: 2269
 Sample origin: Ispanija
 Best before: 2022 07



Peak Report TIC

Peak#	R.Time	Area	Area%	Name
1	6.416	118625	0.00	Tricyclene
2	6.529	10798213	0.22	Thujene <alpha->
3	6.718	86255943	1.73	Pinene <alpha->
4	6.968	1041954	0.02	Citronellene <beta->
5	7.092	1305886	0.03	Camphene
6	7.232	95320	0.00	Thuja-2,4(10)-diene
7	7.760	172390987	3.46	Sabinene
8	7.837	11903186	0.24	Pinene <beta->
9	7.968	12573138	0.25	1-Octen-3-ol
10	8.108	189912990	3.81	Hept-5-en-2-one <6-methyl->
11	8.199	35951572	0.72	Myrcene
12	8.376	12939150	0.26	3-Octanol
13	8.577	3846862	0.08	Phellandrene <alpha->
14	8.920	4243445	0.09	Terpinene <alpha->
15	9.425	1339510799	26.87	Limonene*
16	9.450	121266059	2.43	Eucalyptol
17	9.499	11130990	0.22	Ocimene <cis-, beta->
18	9.819	153004373	3.07	Ocimene <trans-, beta->
19	9.954	6200586	0.12	Bergamal
20	10.111	8332844	0.17	Terpinene <gamma->
21	10.385	34400086	0.69	Sabinene hydrate <cis->
22	10.614	5247740	0.11	Unknown
23	10.806	3479911	0.07	Unknown
24	10.943	3923706	0.08	Terpinolene

Peak#	R.Time	Area	Area%	Name
25	11.168	14483063	0.29	Unknown
26	11.297	37451264	0.75	Sabinene hydrate <trans-> + Linalool*
27	11.397	28350780	0.57	Nonanal + Pinene oxide <alpha->
28	11.917	11038892	0.22	Fenchyl alcohol
29	12.033	3710123	0.07	Campholenal <alpha->
30	12.231	8549921	0.17	Limonene oxide <cis->
31	12.403	47330866	0.95	Nopinone + Verbenol <cis-> + Epoxy ocimer
32	12.548	11236238	0.23	Isocitral <exo-> + Verbenol <trans->
33	12.705	40158368	0.81	Chrysanthemol <trans->
34	12.760	20529362	0.41	Citronellal
35	13.093	18298666	0.37	Isocitral <(Z)->
36	13.255	10336248	0.21	Terpineol <delta->
37	13.400	17790785	0.36	Rose furan oxide
38	13.528	7999698	0.16	Terpinen-4-ol
39	13.597	28785318	0.58	Isocitral <(E)->
40	13.846	3956340	0.08	Unknown
41	13.950	65275133	1.31	Terpineol <alpha->
42	14.125	3617214	0.07	Unknown
43	14.640	2787610	0.06	Verbenone
44	14.781	8142374	0.16	Carveol <trans->
45	15.009	32033950	0.64	Nerol
46	15.405	566790619	11.37	Neral
47	15.472	6995413	0.14	Carvone
48	15.701	11396593	0.23	Piperitone
49	15.753	9267784	0.19	Unknown
50	16.244	635162259	12.74	Geranial
51	16.528	3936905	0.08	Heptanoate <butyl->
52	16.690	1893902	0.04	Hexanoic acid <3-methyl-, 2-butenyl-> ester
53	17.503	1736767	0.03	Unknown
54	17.625	1026987	0.02	Elemene <gamma->
55	17.876	7145810	0.14	Terpinyl acetate <alpha->
56	18.205	2956498	0.06	Cubebene <alpha->
57	18.385	2265201	0.05	Unknown
58	18.460	3962033	0.08	Eugenol**
59	18.676	2797579	0.06	Unknown
60	18.926	31383329	0.63	Copaene <alpha->
61	19.022	67705849	1.36	Geranyl acetate
62	19.103	384322	0.01	Funebrene <2-epi-alpha->
63	19.169	21275543	0.43	Bourbonene <beta->
64	19.229	2375311	0.05	sesquithujene <7-epi->
65	19.321	1819659	0.04	Elemene <beta->
66	19.603	2590890	0.05	Methyl eugenol
67	19.628	4679653	0.09	Sesquithujene
68	19.726	483109	0.01	Caryophyllene <(Z)->
69	19.790	501514	0.01	Gurjunene <alpha->
70	19.898	19631221	0.39	Cedrene <alpha->
71	19.943	3171558	0.06	Funebrene <2-epi-, beta>
72	20.107	158431938	3.18	Caryophyllene <(E)->
73	20.290	4548752	0.09	Copaene <beta->
74	20.386	576818	0.01	Bergamotene <alpha-, trans->
75	20.571	1601641	0.03	Farnesene <(Z)-, beta->
76	20.665	2909513	0.06	Isogermacrene D
77	20.767	1785569	0.04	Nerylacetone
78	20.870	1222018	0.02	Farnesene <(E)-, beta->
79	20.915	12517693	0.25	Humulene <alpha->
80	21.103	26605059	0.53	Alloaromadendrene
81	21.298	14626857	0.29	Geranyl propanoate
82	21.468	7461038	0.15	Muurolene <gamma->
83	21.617	243861189	4.89	Curcumene <alpha-> + Germacrene D
84	21.868	25139449	0.50	Zingiberene <alpha->
85	22.004	69624838	1.40	Bicyclogermacrene
86	22.268	33310724	0.67	Bisabolene <beta-> + Curcumene <beta->
87	22.387	6954680	0.14	Cadinene <gamma->
88	22.443	12234511	0.25	Cubebol
89	22.580	9865043	0.20	Cadinene <delta->
90	22.807	2865635	0.06	Calamenene <cis-> + Cubebol <10-epi->
91	22.938	3637968	0.07	Cadinene <alpha->
92	23.057	1609370	0.03	Calacorene <alpha-> + Unknown
93	23.329	9918449	0.20	Unknown

Peak#	R.Time	Area	Area%	Name
94	23.525	33048697	0.66	Nerolidol <(E)->
95	23.695	2648501	0.05	Germacrene D-4-ol
96	23.973	15349226	0.31	Turnerol <ar->
97	24.075	65652911	1.32	Spathulenol
98	24.186	94341743	1.89	Caryophyllene oxide
99	24.273	4627728	0.09	Unknown
100	24.407	8137357	0.16	Unknown
101	24.708	4065566	0.08	Cedrol
102	24.875	8615435	0.17	Humulene epoxide II
103	25.669	8087040	0.16	Unknown
104	25.734	12087177	0.24	Cadinol <epi-alpha->
105	26.084	5265388	0.11	T-Muurolol
106	26.831	6112766	0.12	Germacra-4(15),5,10(14)-trien-1-alpha-ol
		4984421173	100.00	

Kosmetiniai alergenai: *-silpnas, **-vidutinio stiprumo, ***- stiprus alergenai

Analiz atliko

dr. Jurga B dien