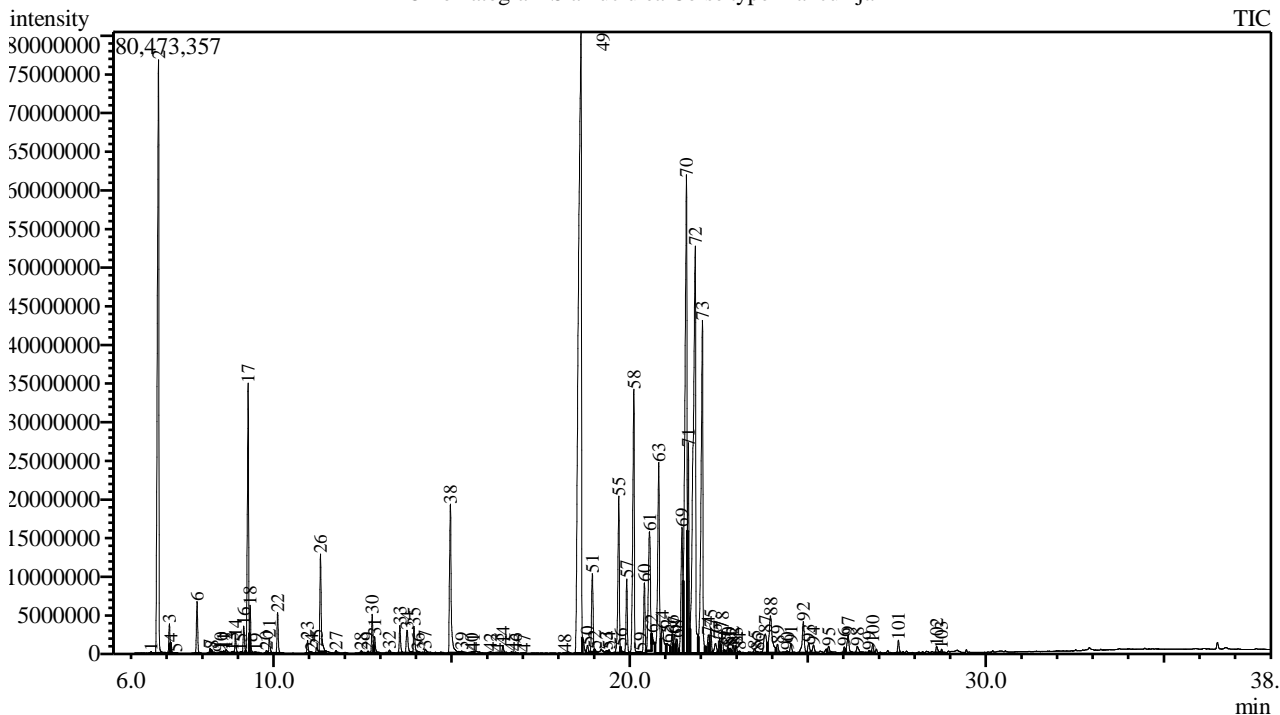


Analysis numb.: GC654
 Analysis date: 2019 02 06
 Sample name: Šlamu i ea
 Botanical name: Helichrysum italicum (Immortelle type Corse)
 Sample batch num: LOT 180144
 Sample origin: Pranc zija
 Best before:

Chromatogram Slamuciu ea Corse type Prancuzija



Peak Report TIC

Peak#	R.Time	Area	Area%	Name
1	6.565	545758	0.02	Thujene <alpha->
2	6.770	225929610	9.32	Pinene <alpha->
3	7.076	8678702	0.36	Fenchene <alpha->
4	7.119	2552003	0.11	Camphene
5	7.261	170662	0.01	Thuja-2,4(10)-diene
6	7.853	15519391	0.64	Pinene <beta->
7	8.219	1662657	0.07	Myrcene
8	8.263	955507	0.04	Linalool oxide <dehydroxy-, trans->
9	8.480	57149	0.00	Carene <delta-2->
10	8.527	492209	0.02	Butyrate <isobutyl-, 2-methyl->
11	8.598	827684	0.03	Phellandrene <alpha->
12	8.669	1570174	0.06	Hex-(3Z)-enyl acetate
13	8.841	567590	0.02	Hexyl acetate
14	8.931	5125744	0.21	Terpinene <alpha->
15	9.080	414888	0.02	Anisole <para-methyl->
16	9.164	8826668	0.36	Cymene <para->
17	9.287	86143911	3.56	Limonene*
18	9.344	12318772	0.51	Eucalyptol
19	9.508	319493	0.01	Ocimene <cis-, beta->
20	9.802	933796	0.04	Ocimene <trans-, beta->
21	9.881	4973844	0.21	Angelate <isobutyl->
22	10.114	12337412	0.51	Terpinene <gamma->
23	10.954	4316927	0.18	Terpinolene
24	11.067	809963	0.03	2-Nonanone

Peak#	R.Time	Area	Area%	Name
25	11.206	2542326	0.10	2,4-Dimethylheptan-3,5-dione
26	11.319	33555763	1.38	Linalool*
27	11.755	890277	0.04	Fenchol <endo->
28	12.465	938856	0.04	Pinocarveol <trans->
29	12.652	739448	0.03	Isoamyl angelate
30	12.770	12172201	0.50	Angelate <2-methylbutyl->
31	12.836	5784256	0.24	Nerol oxide
32	13.253	1516005	0.06	Borneol
33	13.546	9373938	0.39	Terpinen-4-ol
34	13.750	10830956	0.45	Unknown
35	13.942	9742912	0.40	Terpineol <alpha->
36	14.060	490400	0.02	Dodecane
37	14.260	2054370	0.08	Decanal <n->
38	14.966	62964548	2.60	Nerol
39	15.283	561127	0.02	Neral
40	15.561	183017	0.01	Methyl pentyl angelate <3->
41	15.619	203020	0.01	Linalyl acetate
42	16.091	601921	0.02	Geranial
43	16.293	381820	0.02	Tiglate <(3Z)-hexenyl->
44	16.441	2624732	0.11	Hexenyl angelate <(3Z)->
45	16.680	534286	0.02	2-Undecanone
46	16.791	585971	0.02	Tridecane
47	17.037	105884	0.00	Undecanal
48	18.180	281378	0.01	Terpinyl acetate <alpha->
49	18.635	463068836	19.11	Neryl acetate
50	18.817	3458187	0.14	Ylangene <alpha->
51	18.952	30436290	1.26	Copaene <alpha->
52	19.025	559846	0.02	Geranyl acetate
53	19.349	1263700	0.05	Elemene <beta->
54	19.420	1733264	0.07	Tetradecane <n->
55	19.695	57122648	2.36	Italicene
56	19.749	1095827	0.05	Caryophyllene <(Z)->
57	19.918	24942544	1.03	Bergamotene <alpha-, cis->
58	20.117	103372732	4.27	Caryophyllene <(E)->
59	20.298	935258	0.04	Ylangene <beta->
60	20.414	24256792	1.00	Bergamotene <alpha-, trans->
61	20.556	64992601	2.68	Dec-8-en-3,5-dione <4,6,9-trimethyl->
62	20.624	2796842	0.12	Guadiene <6,9->
63	20.817	83011548	3.43	Neryl propionate
64	20.918	18823596	0.78	Farnesene <(E)-, beta-> + Humulene <alpha->
65	21.054	7867933	0.32	Amorpha-4,11-diene
66	21.192	8123733	0.34	Acoradiene<alpha->
67	21.260	7804309	0.32	Acoradiene <beta->
68	21.325	5849044	0.24	Aristolochene<4,5-di-epi->
69	21.471	58410596	2.41	Selina-4,11-diene
70	21.595	246292924	10.16	Curcumene <gamma->
71	21.648	63369704	2.62	Curcumene <ar->
72	21.842	266259323	10.99	Selinene <beta->
73	22.043	153650767	6.34	Selinene <alpha->
74	22.212	8034878	0.33	Bisabolene <beta->
75	22.279	9205750	0.38	Curcumene <beta->
76	22.411	5773370	0.24	Cadinene <gamma->
77	22.527	5334703	0.22	Panasinsen <alpha->
78	22.597	8641631	0.36	Cadinene <delta->
79	22.663	1393961	0.06	Zonarene
80	22.758	2643503	0.11	Bisabolene <(E)-gamma->
81	22.820	2065491	0.09	Nerolidol <(Z)-> + Cadina-1,4-diene <trans->
82	22.900	3737619	0.15	Unknown
83	22.991	2978521	0.12	Bisabolene <(E)-, alpha->
84	23.089	1102744	0.05	Calacorene <alpha->
85	23.509	2251003	0.09	Nerolidol <(E)->
86	23.598	818768	0.03	Calacorene <beta->
87	23.810	14409334	0.59	Neryl isovalerate
88	23.953	30165215	1.24	Unknown
89	24.152	4573611	0.19	Caryophyllene oxide
90	24.422	1690782	0.07	Unknown
91	24.530	4208763	0.17	Guaiol
92	24.877	16919280	0.70	Copaborneol + Eudesmol <beta->
93	25.029	4820819	0.20	Selin-11-en-4-apha-ol

Peak#	R.Time	Area	Area%	Name
94	25.163	4275009	0.18	Geranyl tiglate
95	25.588	3053259	0.13	Unknown
96	26.028	2618939	0.11	Unknown
97	26.134	9662026	0.40	Intermedeol<neo->
98	26.394	4039268	0.17	Bisabolol <beta->
99	26.724	1364440	0.06	Bisabolol<epi-alpha->
100	26.827	3343439	0.14	Unknown
101	27.547	4517432	0.19	Geraniol hexanoate
102	28.620	3066137	0.13	Unknown
103	28.761	1119257	0.05	Geranyl octanoate
		2423037722	100.00	

Kosmetiniai alergenai: *-silpnas, **-vidutinio stiprumo, ***- stiprus alergenai

Analiz atliko

dr. Jurga B dien