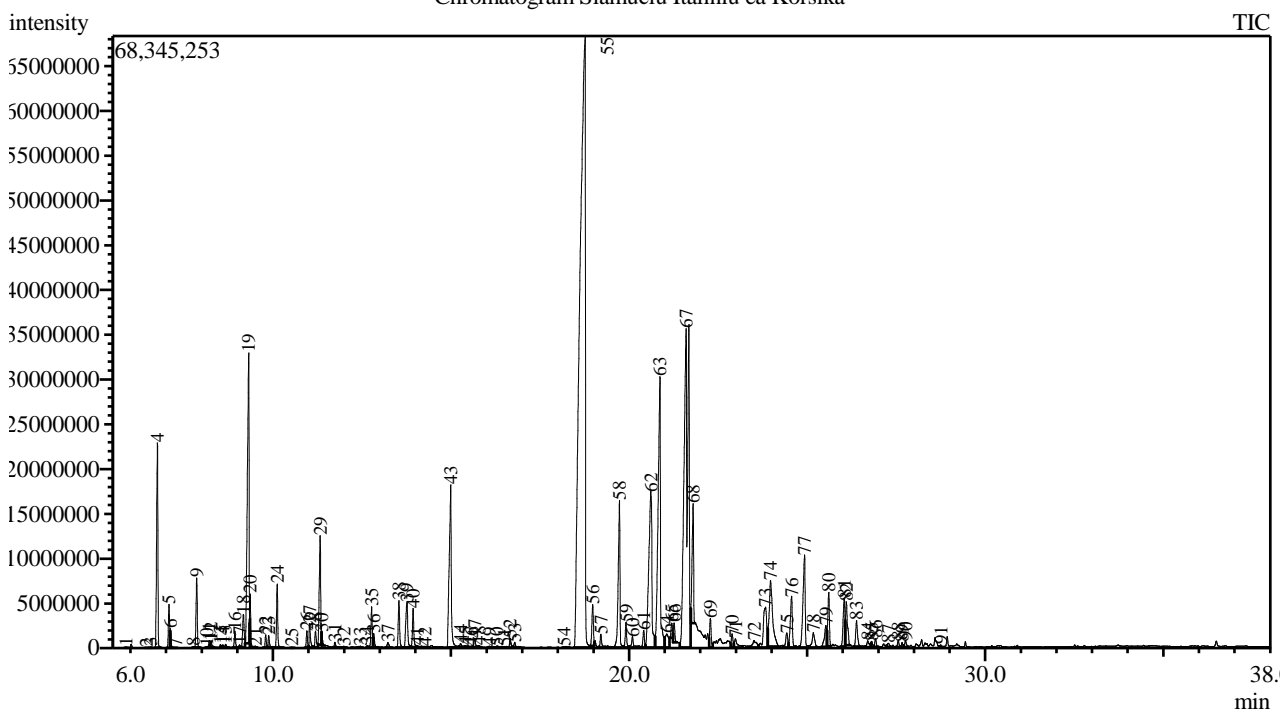


Analysis numb.: GC486  
 Analysis date: 2017 11 20  
 Sample name: Italini šlamu i ekologiškas ea  
 Botanical name: Helichrysum italicum (Immortele)  
 Sample batch num: HEHI11707  
 Sample origin: Korsika  
 Best before: 2021 08

Chromatogram Slamuciu Italiniu ea Korsika



Peak Report TIC

Peak#	R.Time	Area	Area%	Name
1	5.869	172844	0.01	Nonane
2	6.447	109992	0.01	Tricyclene
3	6.565	296740	0.01	Thujene <alpha->
4	6.757	56826724	2.64	Pinene <alpha->
5	7.081	11304129	0.52	Fenchene <alpha->
6	7.123	3897827	0.18	Camphene
7	7.266	100329	0.00	Thuja-2,4(10)-diene
8	7.766	125973	0.01	Sabinene
9	7.859	18378070	0.85	Pinene <beta->
10	8.140	176995	0.01	5-Hepten-2-one, 6-methyl-
11	8.213	1750627	0.08	Myrcene
12	8.263	1521655	0.07	Linalool oxide <dehydroxy, trans->
13	8.525	714462	0.03	Butyrate <isobutyl-, 2-methyl->
14	8.595	773750	0.04	Phellandrene <alpha->
15	8.671	993531	0.05	1,7-Octadiene-3,6-diol <2,6-dimethyl->
16	8.932	4561077	0.21	Terpinene <alpha->
17	9.060	734858	0.03	Anisole <para-methyl->
18	9.171	11014104	0.51	Cymene <para->
19	9.319	10777417	5.00	Limonene*
20	9.364	9067441	0.42	Eucalyptol
21	9.505	242873	0.01	Ocimene <cis-, beta->
22	9.797	3205074	0.15	Ocimene <trans-, beta->
23	9.881	3280702	0.15	Angelate <isobutyl->
24	10.121	16374349	0.76	Terpinene <gamma->

Peak#	R.Time	Area	Area%	Name
25	10.529	127169	0.01	Linalool oxide <cis->
26	10.954	4467210	0.21	Terpinolene
27	11.030	7059411	0.33	Heptyl methyl ketone
28	11.196	5211990	0.24	2,4-Dimethyl-heptane-3,5-dione
29	11.325	33497396	1.55	Linalool*
30	11.370	2242726	0.10	Isopenthyl 2-methyl butanoate
31	11.740	1559682	0.07	Fenchyl alcohol
32	11.994	442565	0.02	Terpineol <1->
33	12.454	500560	0.02	Pinocarveol <trans->
34	12.650	412740	0.02	Isoamyl angelate
35	12.772	11601823	0.54	Angelate <2-methylbutyl->
36	12.830	3977602	0.18	Nerol oxide
37	13.230	1958004	0.09	Borneol
38	13.539	13951455	0.65	Terpinen-4-ol
39	13.766	19207079	0.89	2,2-Dimethyl-3-heptanone
40	13.937	11378202	0.53	Terpineol <alpha->
41	14.057	773488	0.04	Dodecane
42	14.265	365693	0.02	Decanal
43	14.993	73027536	3.39	Nerol
44	15.270	1538961	0.07	Neral
45	15.399	625899	0.03	Myrntanol <cis->
46	15.557	194753	0.01	Angelate <methylpentyl->
47	15.666	3317948	0.15	2-Decene, 2,4-dimethyl-
48	15.791	515401	0.02	2,4-Dimethylpentan-3-yl (E)-2-methylbut-2-ene
49	16.077	510582	0.02	Geranial
50	16.280	615313	0.03	Hexenyl angelate <(3Z)->
51	16.493	387553	0.02	Bornyl acetate
52	16.662	3069858	0.14	Undecan-2-one
53	16.791	1635702	0.08	Tridecane
54	18.179	453209	0.02	Terpinyl acetate <alpha->
55	18.763	719446001	33.38	Neryl acetate
56	18.978	13078564	0.61	Unknown
57	19.212	4582353	0.21	Unknown
58	19.732	55835257	2.59	Italicene
59	19.916	7707564	0.36	Bergamotene <alpha-, cis->
60	20.100	4713022	0.22	Caryophyllene
61	20.414	5577736	0.26	Bergamotene <alpha-, trans->
62	20.615	107704735	5.00	Dec-8-en-3,5-dione <4,6,9-trimethyl->
63	20.868	140557229	6.52	Neryl propionate
64	21.065	10074286	0.47	Amorpha-4,11-diene
65	21.199	4406618	0.20	Acoradiene <alpha->
66	21.265	5983323	0.28	Acoradiene <beta->
67	21.602	297932656	13.82	Curcumene <gamma->
68	21.799	39395639	1.83	Unknown
69	22.287	9293338	0.43	Curcumene <beta->
70	22.898	5050104	0.23	Unknown
71	22.991	5458393	0.25	Bisabolene <(E)-, alpha->
72	23.514	6192756	0.29	Nerolidol <(E)->
73	23.833	29822312	1.38	Neryl isovalerate + Unknown
74	23.970	49711332	2.31	Unknown
75	24.432	6656896	0.31	Eudesmol
76	24.566	23338608	1.08	Guaiol
77	24.928	43644339	2.02	Rosefoliol
78	25.180	8091767	0.38	Geranyl isovalerate
79	25.525	10234830	0.47	Eudesmol <10-epi-gamma->
80	25.607	18784926	0.87	Unknown
81	26.039	18940812	0.88	Eudesmol <beta->
82	26.100	17422409	0.81	Eudesmol<alpha->
83	26.387	10112768	0.47	Bulnesol
84	26.706	3816640	0.18	Bisabolol <alpha->
85	26.813	2133060	0.10	Unknown
86	26.926	2847194	0.13	Unknown
87	27.278	1616792	0.08	Bergamotol <(Z)-, alpha-, trans-> + Atlantone
88	27.564	2258558	0.10	Unknown
89	27.670	1665445	0.08	2,6-Dimethyl-2,6-octadiene-1,8-diol diacetate
90	27.767	2572497	0.12	Unknown
91	28.753	886311	0.04	Geranyl octanoate
		2155576123	100.00	

Kosmetiniai alergenai: \*-silpnas, \*\*-vidutinio stiprumo, \*\*\*- stiprus alergenai  
Analiz atliko

dr. Jurga B dien