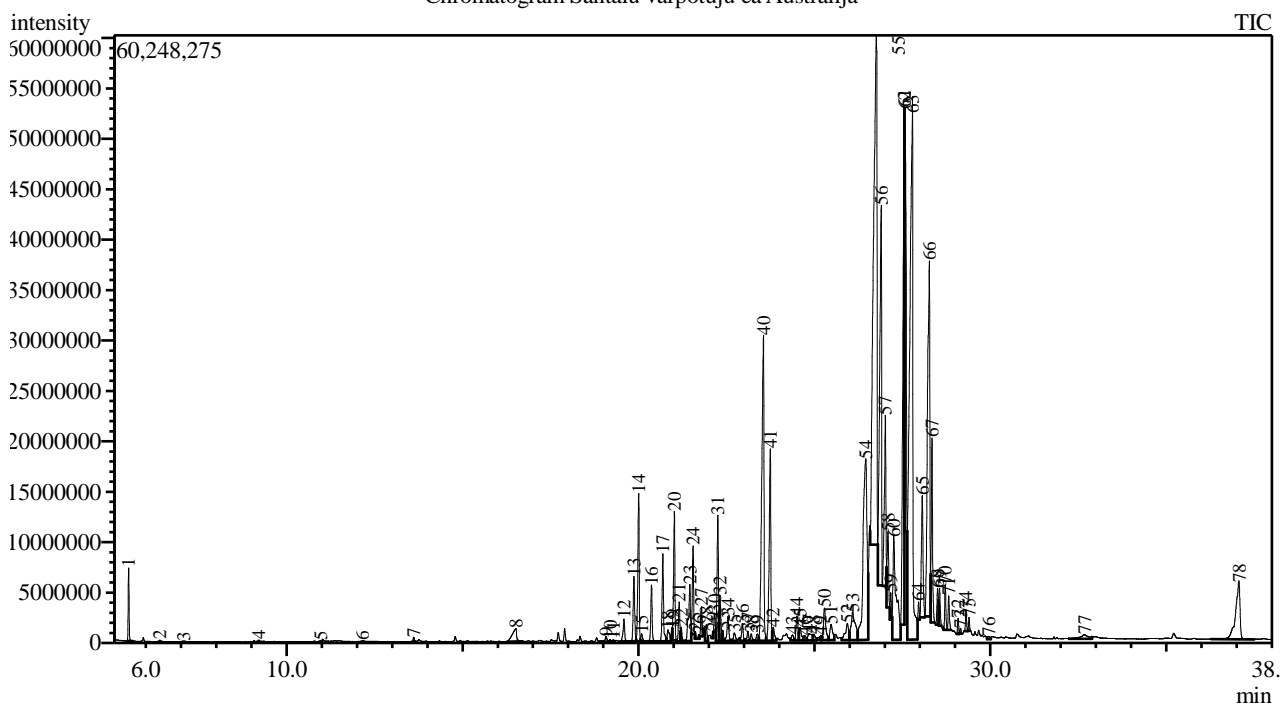


Analysis numb.: GC839  
 Analysis date: 2020 01 27  
 Sample name: Santal varpot j grynasis ea  
 Botanical name: Santalum spicatum  
 Sample batch num: 0026632  
 Sample origin: Australija  
 Best before: 2021 01

Chromatogram Santalu varpotuju ea Australija



Peak Report TIC

Peak#	R.Time	Area	Area%	Name
1	5.508	12863026	0.54	Santene
2	6.395	282942	0.01	Tricyclene
3	7.070	64338	0.00	Camphene
4	9.211	435200	0.02	Limonene*
5	10.967	183353	0.01	Cymenene <para->
6	12.153	172617	0.01	Limona ketone
7	13.612	1087363	0.05	Santalone
8	16.519	10953191	0.46	Unknown
9	19.081	1956474	0.08	Funebrene <2-epi-alpha->
10	19.195	585194	0.02	Sesquithujene <7-epi->
11	19.288	488729	0.02	Elemene <beta->
12	19.589	7411218	0.31	Funebrene <alpha->
13	19.873	19233778	0.81	Cedrene <alpha->
14	20.007	39120809	1.65	Santalene <alpha->
15	20.091	2424823	0.10	Cedrene <beta->
16	20.372	15233068	0.64	Bergamotene <alpha-, trans->
17	20.694	25052399	1.06	Santalene <epi-, beta->
18	20.841	5375713	0.23	Farnesene <(E)-, beta->
19	20.960	1408599	0.06	Sesquisabinene
20	21.019	34387517	1.45	Santalene <beta->
21	21.158	10596039	0.45	Acoradiene <alpha->
22	21.216	3370440	0.14	Acoradiene <beta->
23	21.461	21433926	0.91	Curcumene <gamma->
24	21.551	21334489	0.90	Curcumene <alpha->

Peak#	R.Time	Area	Area%	Name
25	21.615	1494918	0.06	Bergamotene <beta-, trans->
26	21.716	1074937	0.05	Selinene <beta->
27	21.790	8095047	0.34	Unknown
28	21.926	4980155	0.21	Selinene <alpha->
29	22.115	1230113	0.05	Farnesene <(E,E)-, alpha->
30	22.167	4291185	0.18	Bisabolene <beta->
31	22.257	35928494	1.52	Curcumene <beta->
32	22.317	12830943	0.54	Sesquicineole
33	22.400	2749124	0.12	Nootkatene
34	22.543	8589765	0.36	Sesquiphellandrene <beta->
35	22.724	3619589	0.15	Bisabolene <(E)-gamma->
36	22.957	5563911	0.24	Bisabolene <(E)-, alpha->
37	23.113	3194084	0.13	Cedranoxide<8,14->
38	23.207	1975668	0.08	Unknown
39	23.381	2819522	0.12	Unknown
40	23.553	129790345	5.48	Nerolidol <(E)->
41	23.747	62571973	2.64	Dendrasaline
42	23.832	5249134	0.22	Unknown
43	24.379	2420779	0.10	Helifolen-12-al A (syn-anti-anti-)
44	24.506	9276669	0.39	Guaiol
45	24.597	5468713	0.23	Helifolen-12-al B (anti-anti-anti-)
46	24.721	2226724	0.09	Cedrol
47	24.849	5453694	0.23	Rosifoliol
48	24.973	2714236	0.11	Unknown
49	25.187	1757329	0.07	Helifolen-23-al D (syn-syn-syn-)
50	25.288	14470339	0.61	Unknown
51	25.474	8853037	0.37	Acorenol <alpha->
52	25.939	10562317	0.45	Acorenol <beta->
53	26.091	23678418	1.00	Unknown
54	26.462	140873998	5.95	Bisabolol <beta->
55	26.760	348009746	14.71	Santalol <(Z)-alpha->
56	26.900	144816897	6.12	Bisabolol<epi-alpha->
57	27.017	52875109	2.23	Bergamotol <alpha-(Z)-, trans->
58	27.091	22147856	0.94	Unknown
59	27.170	5934431	0.25	Unknown
60	27.264	66634166	2.82	Santalol <(Z)-beta-epi->
61	27.560	152530871	6.45	Santalol <(Z)-, beta->
62	27.563	120834330	5.11	Farnesol <(2E,6E)->
63	27.783	335573554	14.18	Nuciferol <(Z)->
64	27.962	3513639	0.15	Santalol<(E)-beta->
65	28.066	39976558	1.69	Curcumen-12-ol <beta-, (Z)->
66	28.269	157851907	6.67	Nuciferol <(E)->
67	28.343	46587596	1.97	Lanceol <cis->
68	28.500	9997115	0.42	Santalol acetate <(Z)-, alpha->
69	28.558	9694895	0.41	Unknown
70	28.719	10609939	0.45	Unknown
71	28.817	7965921	0.34	Unknown
72	29.086	3452058	0.15	Unknown
73	29.157	1230749	0.05	Santalol acetate <(Z)-, beta->
74	29.309	4558097	0.19	Nuciferol acetate <(Z)->
75	29.396	2547214	0.11	Farnesyl acetate
76	29.956	1269161	0.05	Neophytadiene
77	32.679	7533241	0.32	Phytol
78	37.074	50912831	2.15	Squalene
		2366318286	100.00	

Kosmetiniai alergenai: \*-silpnas, \*\*-vidutinio stiprumo, \*\*\*- stiprus alergenai

Analiz atliko

dr. Jurga B dien