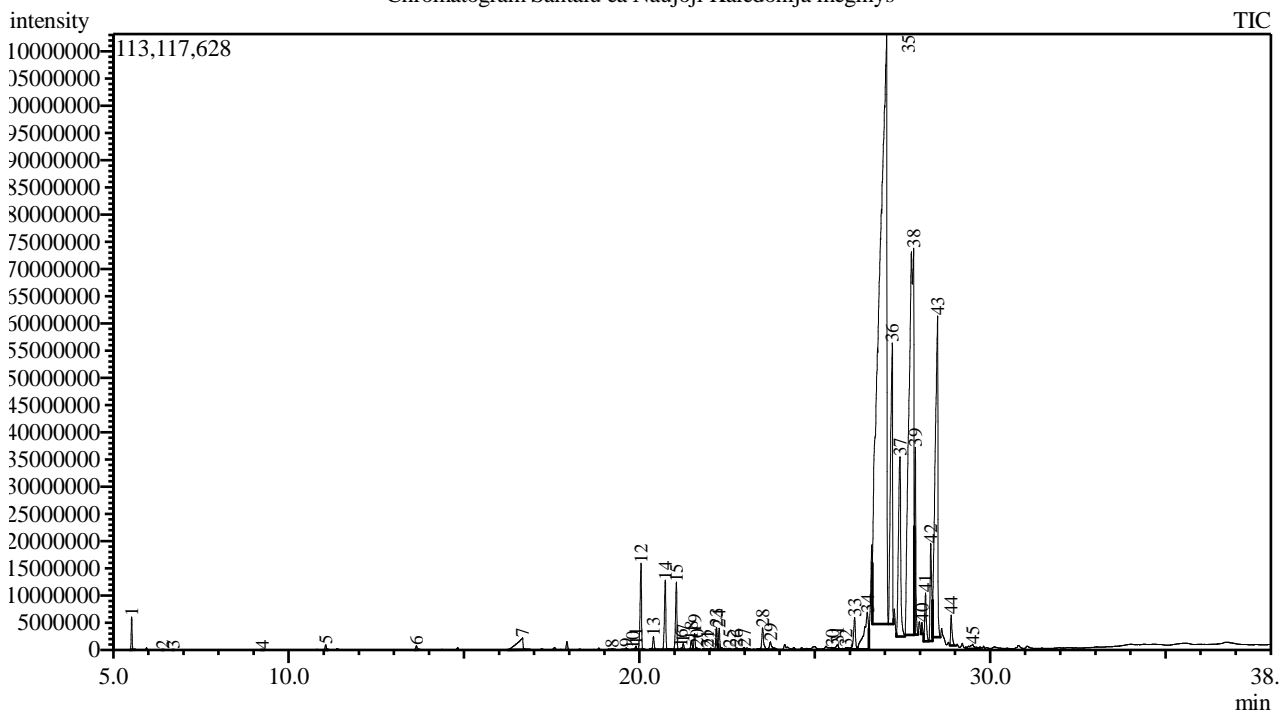


Analysis numb.: GC935
 Analysis date: 2020 06 03
 Sample name: Santalu ea (m ginyys)
 Botanical name: Santalum austrocaledonicum Vieill
 Sample batch num: 1219/1
 Sample origin: Naujoji Kaledonija
 Best before: 2021 07 18

Chromatogram Santalu ea Naujoji Kaledonija meginys



Peak Report TIC

Peak#	R.Time	Area	Area%	Name
1	5.525	10819475	0.31	Santene
2	6.413	143301	0.00	Tricyclene
3	6.704	65218	0.00	Pinene <alpha->
4	9.246	130257	0.00	Limonene*
5	11.056	2323726	0.07	Sabinene hydrate <cis->
6	13.643	2009140	0.06	Santalone
7	16.670	26539730	0.76	Unknown
8	19.227	533115	0.02	Sesquithujene <7-epi->
9	19.627	1115043	0.03	Funebreene <alpha->
10	19.807	162088	0.00	Acora-3,7(14)-diene
11	19.903	1944620	0.06	Cedrene <alpha->
12	20.047	44114589	1.27	Santalene <alpha->
13	20.402	6714803	0.19	Bergamotene <alpha-, trans->
14	20.740	35381931	1.02	Santalene <epi-, beta->
15	21.055	34475853	0.99	Santalene <beta->
16	21.189	640329	0.02	Acoradiene<alpha->
17	21.251	2810290	0.08	Acoradiene <beta->
18	21.486	5002342	0.14	Curcumene <gamma->
19	21.575	7630449	0.22	Curcumene <alpha->
20	21.640	656351	0.02	Bergamotene <beta-, trans->
21	21.941	295992	0.01	Alaskene <beta->
22	22.036	881692	0.03	Bisabolene <(Z)-, alpha->
23	22.201	11157531	0.32	Bisabolene <beta->
24	22.276	10018529	0.29	Curcumene <beta->

Peak#	R.Time	Area	Area%	Name
25	22.574	893358	0.03	Sesquiphellandrene <beta->
26	22.760	1591115	0.05	Bisabolene <(E)-gamma->
27	22.988	1116535	0.03	Bisabolene <(E)-, alpha->
28	23.514	13742856	0.40	Nerolidol <(E)->
29	23.737	6040043	0.17	Dendrolasin
30	25.505	1186877	0.03	Acorenol <beta->
31	25.648	4285083	0.12	Unknown
32	25.892	1304980	0.04	Eudesmol<5-epi-7-epi-alpha->
33	26.137	23033814	0.66	Unknown
34	26.502	59357650	1.71	Bisabolol <epi-, beta->
35	27.047	1602971073	46.09	Santalol <(Z)-alpha->
36	27.210	208401622	5.99	Bergamotol <alpha-(Z)-, trans->
37	27.426	153211647	4.41	Santalol <(Z)-beta-epi->
38	27.819	682329028	19.62	Santalol <(Z)-beta->
39	27.868	77670194	2.23	Nuciferol <(Z)->
40	28.054	4339887	0.12	Santalol <(E)-, beta->
41	28.157	28654966	0.82	Unknown
42	28.307	61275776	1.76	Curcumen-12-ol <beta-, (Z)->
43	28.502	315356432	9.07	Lanceol <cis->
44	28.887	16153829	0.46	Unknown
45	29.511	9271355	0.27	Santalol acetate <(Z)-, alpha->
		3477754514	100.00	

Kosmetiniai alergenai: *-silpnas, **-vidutinio stiprumo, ***- stiprus alergenai

Analiz atliko

dr. Jurga B dien