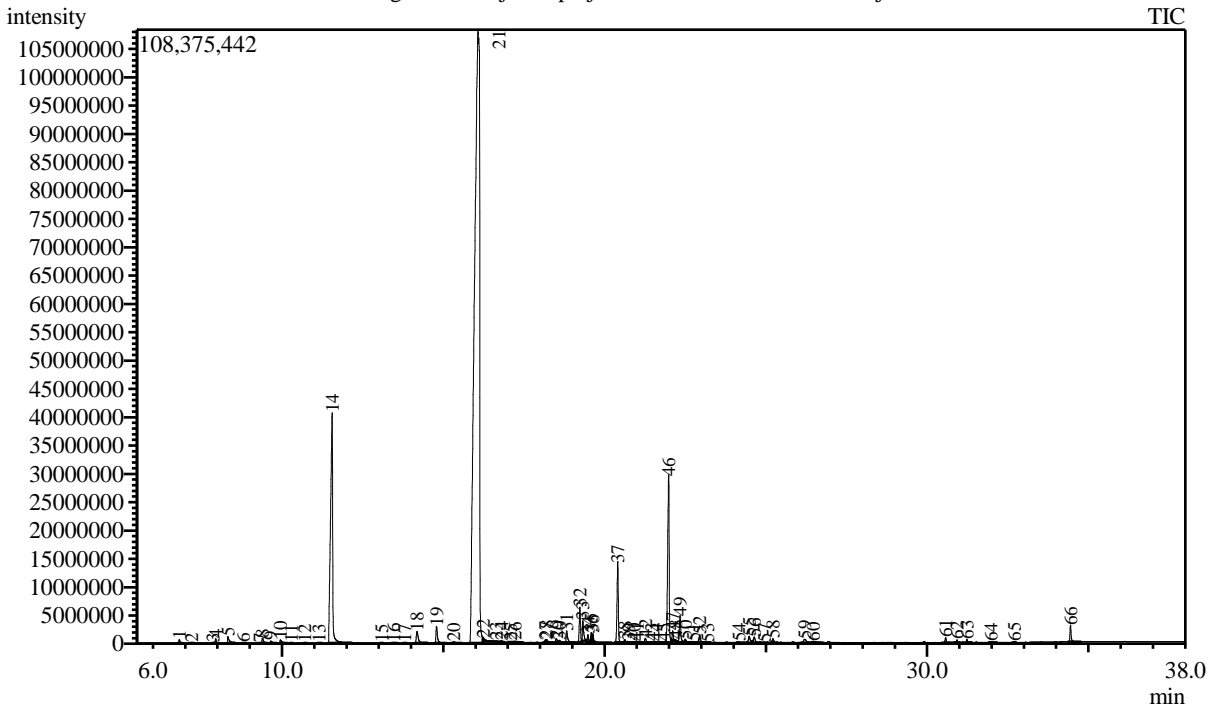


Analysis numb.: GC1609
 Analysis date: 2023 07 24
 Sample name: Salaviju kvapiuju sausu smulkintu ea
 Botanical name: Salvia sclarea
 Sample batch num: LOT 215073
 Sample origin: Prancuzija
 Best before: 2027 07 01

Chromatogram Salaviju kvapiuju sausu smulkintu ea Prancuzija



Peak Report TIC

Peak#	R.Time	Area	Area%	Name
1	6.816	1302598	0.08	Pinene <alpha->
2	7.204	305303	0.02	Camphene
3	7.863	291672	0.02	Sabinene
4	7.946	1831905	0.11	Pinene <beta->
5	8.324	4141865	0.25	Myrcene
6	8.802	234149	0.01	Linalool oxide <dehydro-, cis->
7	9.313	131831	0.01	Cymene <para->
8	9.395	2711047	0.16	Limonene*
9	9.651	1334719	0.08	Ocimene <(Z)-, beta->
10	9.950	2315617	0.14	Ocimene <(E)-, beta->
11	10.286	44580	0.00	Terpinene <gamma->
12	10.707	76290	0.00	Linalool oxide <cis->
13	11.152	331068	0.02	Terpinolene
14	11.557	184341143	11.11	Linalool*
15	13.094	61418	0.00	Nerol oxide
16	13.466	398819	0.02	Borneol
17	13.798	85277	0.01	Terpinen-4-ol
18	14.188	8760235	0.53	Terpineol <alpha->
19	14.793	9749917	0.59	Linalyl formate
20	15.324	1273772	0.08	Nerol
21	16.079	1186062107	71.45	Linalyl acetate
22	16.240	3070329	0.18	Geraniol*
23	16.650	363725	0.02	Neryl formate
24	16.810	545080	0.03	Bornyl acetate

Peak#	R.Time	Area	Area%	Name
25	17.096	178301	0.01	Tridecane <n->
26	17.229	936791	0.06	Geranyl formate
27	18.177	543037	0.03	Elemene <delta->
28	18.206	1823278	0.11	Unknown
29	18.512	2094566	0.13	Cubebene <alpha->
30	18.600	1656580	0.10	Unknown
31	18.833	6647955	0.40	Neryl acetate
32	19.236	16396402	0.99	Copaene <alpha->
33	19.328	9642478	0.58	Geranyl acetate
34	19.490	4313960	0.26	Bourbonene <beta->
35	19.591	3867750	0.23	Cubebene <beta->
36	19.637	3227061	0.19	Elemene <beta->
37	20.412	40191451	2.42	Caryophyllene
38	20.638	1435862	0.09	Copaene <beta->
39	20.743	374141	0.02	Bergamotene <alpha-, trans->
40	20.917	190263	0.01	Aromandendrene
41	21.019	435453	0.03	Isogermacrene D
42	21.271	2664646	0.16	Humulene <alpha->
43	21.466	241177	0.01	Alloaromadendrene
44	21.597	277707	0.02	Cadina-1(6),4-diene <cis->
45	21.823	535192	0.03	Muurolene <gamma->
46	21.990	92393430	5.57	Germacrene D
47	22.113	4131316	0.25	Selinene <beta->
48	22.203	1047789	0.06	Unknown
49	22.347	14459655	0.87	Bicyclogermacrene
50	22.503	2765039	0.17	Farnesene <(E,E)-, alpha->
51	22.757	711651	0.04	Cadinene <gamma->
52	22.956	4427097	0.27	Cadinene <delta->
53	23.197	141642	0.01	Cadina-1,4-diene <trans->
54	24.171	557151	0.03	Unknown
55	24.489	5001392	0.30	Spathulenol
56	24.644	4267040	0.26	Caryophyllene oxide
57	24.957	548760	0.03	Salvial-4(14)-en-1-one
58	25.224	2449431	0.15	Unknown
59	26.206	3869336	0.23	Unknown
60	26.476	1998124	0.12	Eudesmol <beta->
61	30.581	2164787	0.13	Sclareoloxide
62	30.932	1733197	0.10	Springene <alpha->
63	31.238	1562374	0.09	Unknown
64	31.983	266061	0.02	Manoyl oxide <13-epi->
65	32.702	339061	0.02	Manool
66	34.451	7698661	0.46	Sclareol
		1659971511	100.00	

Kosmetiniai alergenai: *-silpnas, **-vidutinio stiprumo, ***- stiprus alergenai

Analiz? atliko

dr. Jurga Budiene