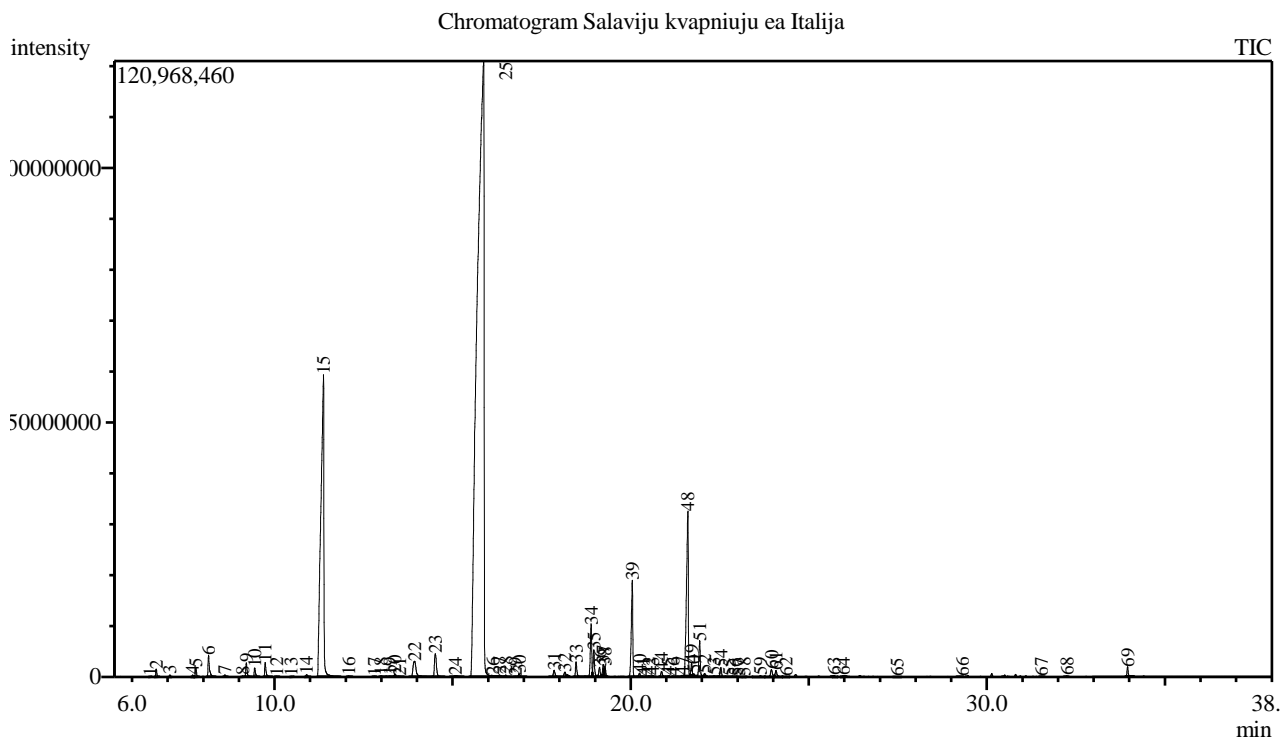


Analysis numb.: GC858
 Analysis date: 2020 02 17
 Sample name: Šalavij kvapni j ea
 Botanical name: Salvia sclarea
 Sample batch num: LOT 20191022009
 Sample origin: Italija
 Best before: 2022 10



Peak Report TIC

Peak#	R.Time	Area	Area%	Name
1	6.501	76378	0.00	Thujene <alpha->
2	6.678	3064062	0.13	Pinene <alpha->
3	7.062	711256	0.03	Camphene
4	7.701	755884	0.03	Sabinene
5	7.791	4072894	0.17	Pinene <beta->
6	8.147	11252354	0.48	Myrcene
7	8.606	865520	0.04	Linalool oxide <dehydro-, cis->
8	9.105	377384	0.02	Cymene <para->
9	9.207	6944820	0.30	Limonene*
10	9.443	4297844	0.18	Ocimene <cis-, beta->
11	9.737	7247755	0.31	Ocimene <trans-, beta->
12	10.059	252820	0.01	Terpinene <gamma->
13	10.468	215888	0.01	Linalool oxide <trans->
14	10.901	1313761	0.06	Terpinolene
15	11.375	348731911	14.93	Linalool*
16	12.081	436406	0.02	
17	12.801	291519	0.01	Nerol oxide
18	12.993	744074	0.03	Pinocamphone <trans->
19	13.240	855353	0.04	Borneol
20	13.381	1682478	0.07	Pinocamphone <cis->
21	13.515	377064	0.02	Terpinen-4-ol
22	13.934	19142905	0.82	Terpineol <alpha->
23	14.517	17470101	0.75	Linalyl formate
24	15.080	1667794	0.07	Nerol

Peak#	R.Time	Area	Area%	Name
25	15.871	1594292039	68.24	Linalyl acetate
26	16.127	375733	0.02	Geranial
27	16.324	816098	0.03	Neryl formate
28	16.497	750743	0.03	Bornyl acetate
29	16.765	160432	0.01	Dodecane
30	16.871	1703982	0.07	Geranyl formate
31	17.856	4366550	0.19	Unknown
32	18.153	2985537	0.13	Cubebene <alpha->
33	18.472	7960426	0.34	Neryl acetate
34	18.893	27650744	1.18	Copaene <alpha->
35	18.967	14256464	0.61	Geranyl acetate
36	19.129	5462229	0.23	Bourbonene <beta->
37	19.230	5533291	0.24	Cubebene <beta->
38	19.279	4460197	0.19	Elemene <beta->
39	20.047	55181801	2.36	Caryophyllene <(E)->
40	20.254	1825695	0.08	Copaene <beta->
41	20.352	329961	0.01	Bergamotene <alpha-, trans->
42	20.513	532721	0.02	Aromadendrene
43	20.622	621244	0.03	Isogermacrene D
44	20.868	3393620	0.15	Humulene <alpha->
45	21.049	327868	0.01	Alloaromadendrene
46	21.192	399121	0.02	Cadina-1(6),4-diene <trans->
47	21.436	1018617	0.04	Muurolene <gamma->
48	21.606	115635727	4.95	Germacrene D
49	21.709	5671114	0.24	Selinene <beta-> + Viridiflorene
50	21.776	822662	0.04	Unknown
51	21.941	20022532	0.86	Bicyclogermacrene + Muurolene <alpha->
52	22.076	1185361	0.05	Farnesene <(E,E)-, alpha->
53	22.341	1014224	0.04	Cadinene <gamma->
54	22.536	5330460	0.23	Cadinene <delta->
55	22.767	139870	0.01	Cadina-1,4-diene <trans->
56	22.936	214877	0.01	Cadinene <alpha-> + Unknown
57	23.033	133849	0.01	Calacorene <alpha->
58	23.187	363607	0.02	Elemol <alpha->
59	23.644	909570	0.04	Unknown
60	23.956	5539394	0.24	Spathulenol
61	24.085	4577643	0.20	Caryophyllene oxide
62	24.364	461331	0.02	Salvial-4(14)-en-1-one
63	25.713	1059214	0.05	Unknown
64	25.966	863579	0.04	Eudesmol <beta->
65	27.481	183726	0.01	Flourensadiol
66	29.312	347357	0.01	Neophytadiene
67	31.534	148870	0.01	Manoyl oxide <13-epi->
68	32.248	290849	0.01	Manool
69	33.956	4291211	0.18	Sclareol
		2336460365	100.00	

Kosmetiniai alergenai: *-silpnas, **-vidutinio stiprumo, ***- stiprus alergenai

Analiz atliko

dr. Jurga B dien