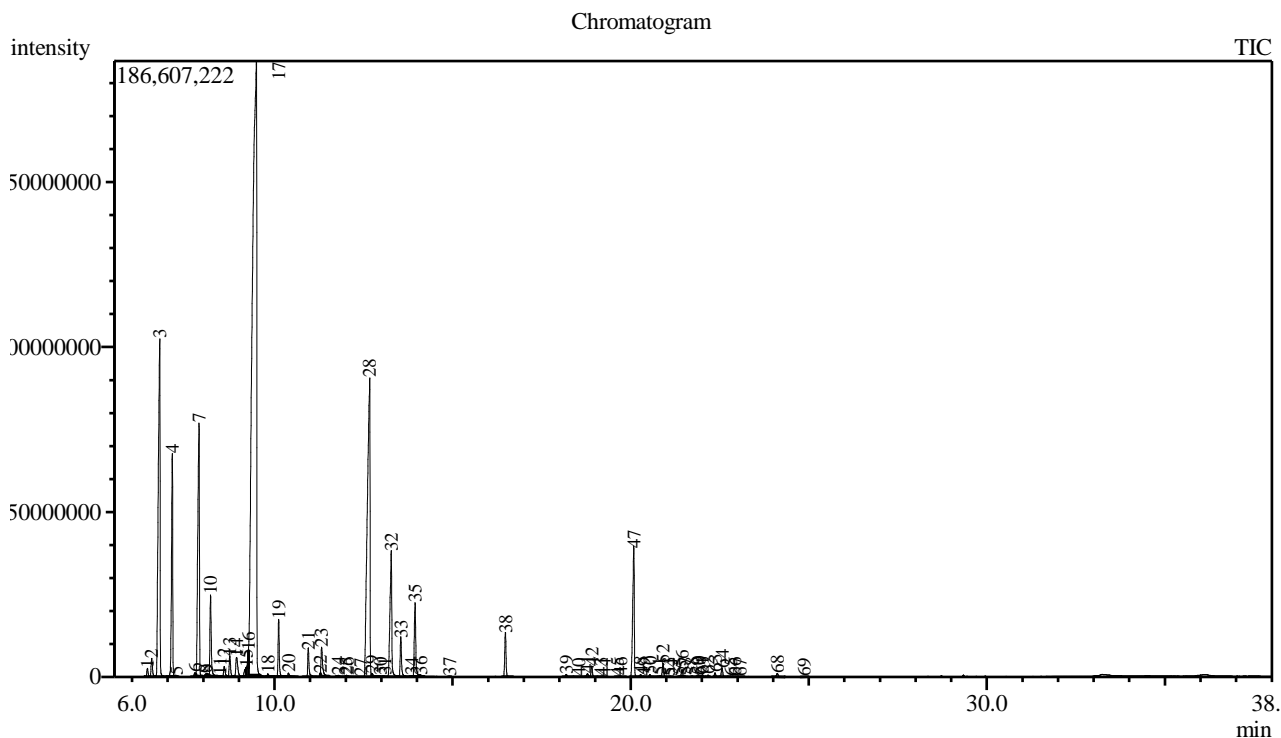


Analysis numb.: GC5614  
 Analysis date: 2018 11 07  
 Sample name: Rozmarin grynasis ea  
 Botanical name: Rosmarinus officinalis  
 Sample batch num: LOT: 0022678  
 Sample origin: Tunisas  
 Best before: 2020 10 23



Peak Report TIC

Peak#	R.Time	Area	Area%	Name
1	6.430	5737980	0.16	Tricyclene
2	6.551	14873787	0.42	Thujene <alpha->
3	6.776	354157035	10.09	Pinene <alpha->
4	7.130	158930636	4.53	Camphene
5	7.251	397092	0.01	Thuja-2,4(10)-diene
6	7.766	3448845	0.10	Sabinene
7	7.879	239597198	6.82	Pinene <beta->
8	8.060	1277349	0.04	1-Octen-3-ol
9	8.106	1722981	0.05	1-Octen-3-ol
10	8.203	61444305	1.75	Myrcene
11	8.474	106227	0.00	Carene <delta-, 2->
12	8.589	9731904	0.28	Phellandrene <alpha->
13	8.744	17432817	0.50	Carene <delta-3->
14	8.936	23444808	0.67	Terpinene <alpha->
15	9.203	7883006	0.22	Cymene <para->
16	9.267	7671905	0.22	Limonene*
17	9.491	1582221060	45.06	Eucalyptol
18	9.817	2129721	0.06	Ocimene <trans-, beta->
19	10.116	39487151	1.12	Terpinene <gamma->
20	10.390	2992526	0.09	Sabinene hydrate <cis->
21	10.952	22589258	0.64	Terpinolene
22	11.287	443061	0.01	Sabinene hydrate <trans->
23	11.321	26982554	0.77	Linalool*
24	11.794	1219177	0.03	Fenchol <endo->

Peak#	R.Time	Area	Area%	Name
25	12.002	615799	0.02	Menth-2-en-1-ol <cis-, para->
26	12.045	1048737	0.03	Campholenel <alpha->
27	12.417	126581	0.00	Nopinone
28	12.672	475606897	13.55	Camphor
29	12.743	2242931	0.06	Camphene hydrate
30	12.971	482855	0.01	Isoborneol
31	13.097	319277	0.01	Pinocarpone
32	13.280	133243536	3.79	Borneol
33	13.550	32171273	0.92	Terpinen-4-ol
34	13.858	223018	0.01	Cymen-8-ol <para->
35	13.947	64258190	1.83	Terpineol <alpha->
36	14.109	978510	0.03	Myrtenol + Estragole
37	14.912	277776	0.01	Isobornyl formate
38	16.486	34283005	0.98	Bornyl acetate
39	18.196	1939573	0.06	Cubebene <alpha->
40	18.550	323532	0.01	Eugenol**
41	18.791	2535680	0.07	Ylangene <alpha->
42	18.911	8582335	0.24	Copaene <alpha->
43	19.162	440104	0.01	Bourbonene <beta->
44	19.265	407861	0.01	Cubebene <beta->
45	19.620	496860	0.01	Eugenol <methyl->
46	19.721	965205	0.03	Caryophyllene <(Z)->
47	20.090	119202477	3.39	Caryophyllene <(E)->
48	20.284	2170595	0.06	Copaene <beta->
49	20.379	122654	0.00	Bergamotene <alpha-, trans->
50	20.545	2221377	0.06	Aromadendrene
51	20.797	492364	0.01	Muurola-3,5-diene <cis->
52	20.908	11338454	0.32	Humulene <alpha->
53	21.066	232003	0.01	Cadina-1(6),4-diene <cis->
54	21.126	127218	0.00	Muurola-4(14),5-diene <cis->
55	21.364	622538	0.02	Cadina-1(6),4-diene<trans->
56	21.442	5288007	0.15	Murolene <gamma->
57	21.528	603231	0.02	Amorphene <alpha->
58	21.721	611851	0.02	Selinene <beta->
59	21.881	1135870	0.03	Muurola-4(14),5-diene <trans-> + Zingiberer
60	21.924	622552	0.02	Selinene <alpha->
61	22.019	1805915	0.05	Murolene <alpha->
62	22.175	1354954	0.04	Bisabolene <beta->
63	22.374	3212188	0.09	Cadinene <gamma->
64	22.569	7662414	0.22	Cadinene <delta->
65	22.804	535116	0.02	Cadina-1,4-diene <trans->
66	22.927	370206	0.01	Cadinene <alpha->
67	23.068	242496	0.01	Calacorene <alpha->
68	24.122	3537904	0.10	Caryophyllene oxide
69	24.861	255740	0.01	Humulene epoxide II
		3511260042	100.00	

Kosmetiniai alergenai: \*-silpnas, \*\*-vidutinio stiprumo, \*\*\*- stiprus alergenai

Analiz atliko

dr. Jurga B dien