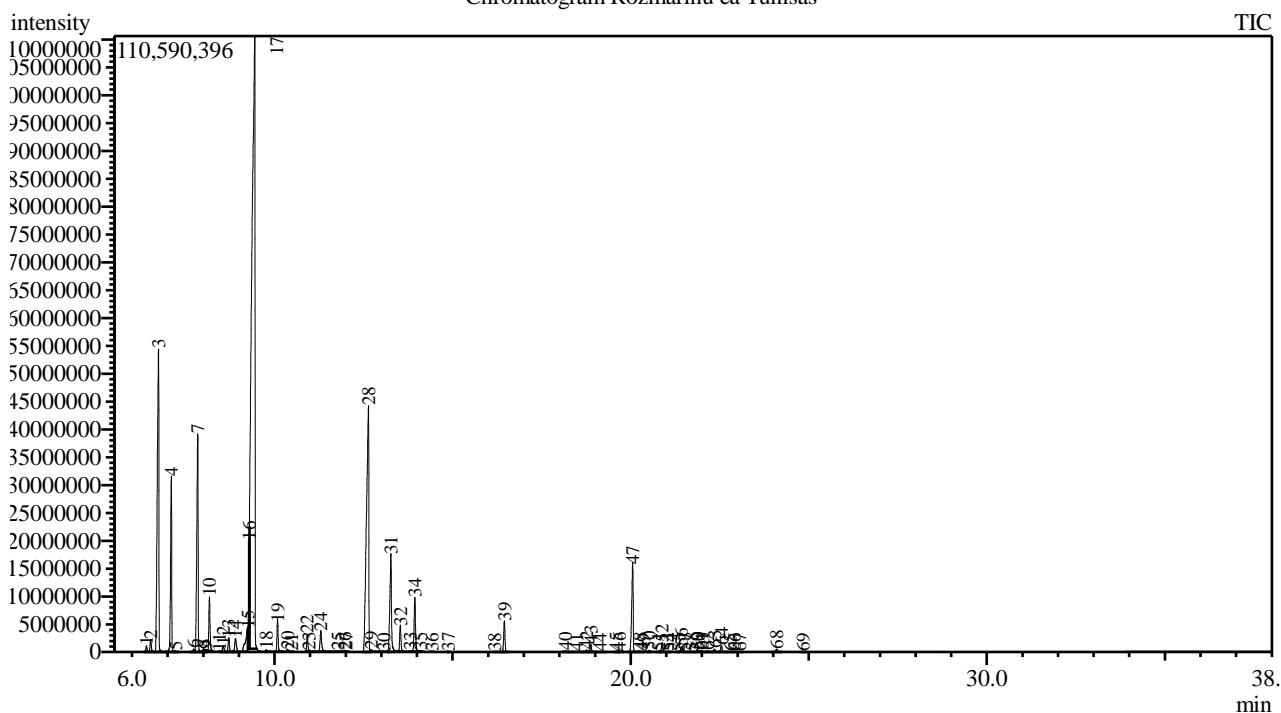


Analysis numb.: GC959  
 Analysis date: 2020 08 31  
 Sample name: Rozmarinu ea  
 Botanical name: Rosmarinus officinalis  
 Sample batch num: LOT 0028576  
 Sample origin: Tunisias  
 Best before: 2021 08

Chromatogram Rozmarinu ea Tunisias



Peak Report TIC

Peak#	R.Time	Area	Area%	Name
1	6.403	2334020	0.15	Tricyclene
2	6.521	5469680	0.35	Thujene <alpha->
3	6.742	166859660	10.73	Pinene <alpha->
4	7.102	69320470	4.46	Camphene
5	7.223	331246	0.02	Thuja-2,4(10)-diene
6	7.732	1424737	0.09	Sabinene
7	7.844	102468561	6.59	Pinene <beta->
8	8.003	1527115	0.10	1-Octen-3-ol
9	8.065	1754460	0.11	3-Octanone
10	8.172	21996269	1.41	Myrcene
11	8.450	32817	0.00	Carene <delta-,2->
12	8.559	3365871	0.22	Phellandrene <alpha->
13	8.715	6507369	0.42	Carene <delta-3->
14	8.905	7962123	0.51	Terpinene <alpha->
15	9.250	18263601	1.17	Cymene <para->
16	9.290	14227312	0.92	Limonene*
17	9.445	709429127	45.64	Eucalyptol
18	9.770	854921	0.05	Ocimene <trans-, beta->
19	10.089	13201956	0.85	Terpinene <gamma->
20	10.369	1017086	0.07	Sabinene hydrate <cis->
21	10.483	79437	0.01	Linalool oxide <cis->
22	10.918	7265627	0.47	Terpinolene
23	10.973	506480	0.03	Cymenene <para->
24	11.304	12639005	0.81	Linalool*

Peak#	R.Time	Area	Area%	Name
25	11.783	581461	0.04	Fenchol <endo->
26	11.964	336303	0.02	Menth-2-en-1-ol <cis-, para->
27	12.015	284901	0.02	Campholenal <alpha->
28	12.638	201414116	12.96	Camphor
29	12.723	901063	0.06	Camphene hydrate
30	13.077	547818	0.04	Pinocarvone
31	13.271	56661644	3.64	Borneol
32	13.536	12603677	0.81	Terpinen-4-ol
33	13.818	283311	0.02	Cymen-8-ol <para->
34	13.941	26704675	1.72	Terpineol <alpha->
35	14.102	380795	0.02	Myrtenol + Estragole
36	14.423	100268	0.01	Verbenone + Piperitol <trans->
37	14.880	146569	0.01	Isobornyl formate
38	16.182	247631	0.02	Ascaridol glycol<trans->
39	16.458	13707427	0.88	Bornyl acetate
40	18.167	696615	0.04	Cubebene <alpha->
41	18.481	251565	0.02	Eugenol**
42	18.764	995406	0.06	Ylangene <alpha->
43	18.885	3398579	0.22	Copaene <alpha->
44	19.135	294042	0.02	Bourbonene <beta-> + Cubebene <beta->
45	19.589	277088	0.02	Methyleugenol
46	19.690	334837	0.02	Caryophyllene <(Z)->
47	20.059	46115294	2.97	Caryophyllene <(E)->
48	20.260	807985	0.05	Copaene <beta->
49	20.354	66956	0.00	Bergamotene <alpha-, trans->
50	20.517	679725	0.04	Aromadendrene
51	20.774	232799	0.01	Isogermacrene D
52	20.885	4487164	0.29	Humulene <alpha->
53	21.038	79378	0.01	Cadina-1(6),4-diene <cis->
54	21.111	45653	0.00	Muurola-4(14),5-diene <cis->
55	21.342	221020	0.01	Cadina-1(6),4-diene <trans->
56	21.422	2186718	0.14	Murolene <gamma->
57	21.517	297882	0.02	Amorphene <alpha->
58	21.706	326854	0.02	Selinene <beta->
59	21.860	449737	0.03	Amorphene <gamma->
60	21.906	250120	0.02	Selinene <alpha->
61	22.002	755025	0.05	Murolene <alpha->
62	22.156	765384	0.05	Bisabolene <beta->
63	22.358	1334546	0.09	Cadinene <gamma->
64	22.552	3220079	0.21	Cadinene <delta->
65	22.791	206066	0.01	Cadina-1,4-diene <trans->
66	22.917	163685	0.01	Cadinene <alpha->
67	23.057	125738	0.01	Calacorene <alpha->
68	24.104	1587087	0.10	Caryophyllene oxide
69	24.842	140308	0.01	Humulene epoxide II
		1554533944	100.00	

Kosmetiniai alergenai: \*-silpnas, \*\*-vidutinio stiprumo, \*\*\*- stiprus alergenai

Analiz atliko

dr. Jurga B dien