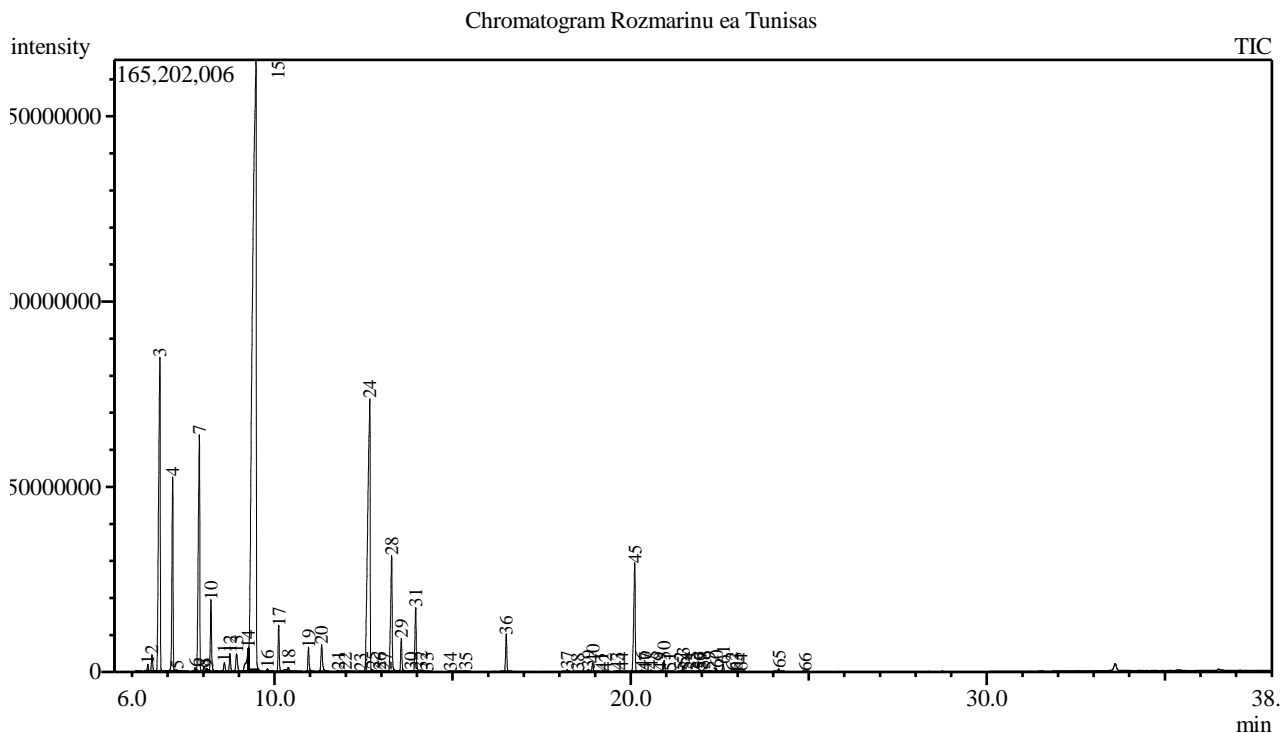


Analysis numb.: GC639
 Analysis date: 2019 01 09
 Sample name: Rozmarin ea
 Botanical name: Rosmarinus officinalis
 Sample batch num: LOT 0022678
 Sample origin: Tunisas
 Best before: 2020 10 23



Peak Report TIC

Peak#	R.Time	Area	Area%	Name
1	6.442	4089948	0.15	Tricyclene
2	6.558	10979828	0.41	Thujene <alpha->
3	6.781	270893791	10.10	Pinene <alpha->
4	7.141	120637048	4.50	Camphene
5	7.262	2191213	0.08	Thuja-2,4(10)-diene
6	7.774	2825228	0.11	Sabinene
7	7.890	182782429	6.81	Pinene <beta->
8	8.018	4067333	0.15	1-Octen-3-ol
9	8.101	2767140	0.10	3-Octanone
10	8.215	45263095	1.69	Myrcene
11	8.592	6860914	0.26	Phellandrene <alpha->
12	8.749	12271217	0.46	Carene <delta-3->
13	8.935	15981432	0.60	Terpinene <alpha->
14	9.273	26690739	0.99	Cymene <para->
15	9.479	1217864513	45.39	Eucalyptol
16	9.805	1679634	0.06	Ocimene <trans-, beta->
17	10.121	28227840	1.05	Terpinene <gamma->
18	10.400	4036166	0.15	Sabinene hydrate <cis->
19	10.958	15695738	0.59	Terpinolene
20	11.322	22596821	0.84	Linalool*
21	11.794	885617	0.03	Fenchol <endo->
22	11.993	1351347	0.05	Menth-2-en-1-ol <cis-, para-> + Campholena
23	12.413	153118	0.01	Nopinone
24	12.676	351449716	13.10	Camphor

Peak#	R.Time	Area	Area%	Name
25	12.754	1371867	0.05	Camphene hydrate
26	12.959	1061918	0.04	Terpineol <trans-, beta->
27	13.107	385935	0.01	Pinocarvone
28	13.291	98785737	3.68	Borneol
29	13.558	22547697	0.84	Terpinen-4-ol
30	13.839	388100	0.01	Cymen-8-ol <para->
31	13.964	46665602	1.74	Terpineol <alpha->
32	14.119	852763	0.03	Myrtenal+ Myrtenol + Methyl chavicol
33	14.285	613898	0.02	Decanal
34	14.944	752847	0.03	Isobornyl formate
35	15.363	801061	0.03	Linalyl acetate
36	16.510	24424882	0.91	Bornyl acetate
37	18.223	1322680	0.05	Cubebene <alpha->
38	18.508	489033	0.02	Eugenol**
39	18.820	1885194	0.07	Ylangene <alpha->
40	18.939	6250509	0.23	Copaene <alpha->
41	19.191	334412	0.01	Bourbonene <beta->
42	19.293	321098	0.01	Cubebene <beta->
43	19.624	610863	0.02	Methyleugenol
44	19.751	747172	0.03	Caryophyllene <(Z)->
45	20.116	86198294	3.21	Caryophyllene <(E)->
46	20.313	1553225	0.06	Copaene <beta->
47	20.416	409831	0.02	Bergamotene <alpha-, trans->
48	20.576	1579974	0.06	Aromadendrene
49	20.829	382231	0.01	Muurola-3,5-diene <cis->
50	20.939	8237700	0.31	Farnesene <(E)-, beta-> + Humulene <alpha->
51	21.099	360150	0.01	Muurola-3,5-diene<trans->
52	21.396	422045	0.02	Cadina-1(6),4-diene<trans->
53	21.474	3915705	0.15	Muurolene <gamma->
54	21.563	541663	0.02	Amorphene <alpha->
55	21.758	574439	0.02	Selinene <beta->
56	21.913	745654	0.03	Cadina-1,4-diene <cis->
57	21.957	524381	0.02	Selinene <alpha->
58	22.053	1420580	0.05	Muurolene <alpha->
59	22.207	1231050	0.05	Bisabolene <beta->
60	22.406	2671598	0.10	Cadinene <gamma->
61	22.601	5562249	0.21	Cadinene <delta->
62	22.838	377444	0.01	Cadina-1,4-diene <trans->
63	22.960	287143	0.01	Cadinene <alpha->
64	23.104	182148	0.01	Calacorene <alpha->
65	24.163	2643784	0.10	Caryophyllene oxide
66	24.904	226958	0.01	Humulene epoxide II
		2682903379	100.00	

Kosmetiniai alergenai: *-silpnas, **-vidutinio stiprumo, ***- stiprus alergenai

Analiz atliko

dr. Jurga B dien