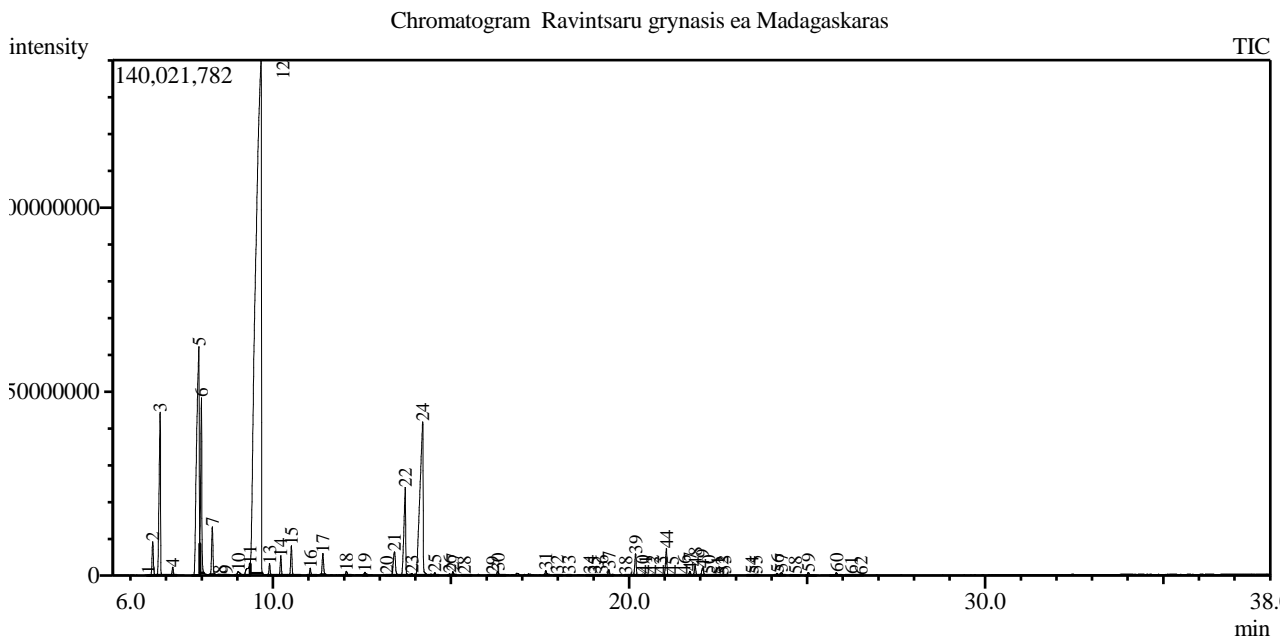


Analysis numb.: GC407
 Analysis date: 2017 02 22
 Sample name: Ravintsar grynasis ea
 Botanical name: Cinnamomum camphora (Kamparini cinamon lap)
 Sample batch num: RAVCC0515PFE
 Sample origin: Madagascar
 Best before: 2019 12



Peak Report TIC

Peak#	R.Time	Area	Area%	Name
1	6.504	232086	0.01	Tricyclene
2	6.625	23876320	0.89	Thujene <alpha->
3	6.833	123657505	4.60	Pinene <alpha->
4	7.188	5792638	0.22	Camphene
5	7.920	309787024	11.53	Sabinene
6	7.992	108818080	4.05	Pinene <beta->
7	8.298	34371491	1.28	Myrcene
8	8.505	225976	0.01	Decane
9	8.684	686755	0.03	Phellandrene <alpha->
10	9.024	5217384	0.19	Terpinene <alpha->
11	9.360	16067896	0.60	Cymene <para->
12	9.668	1520556895	56.61	Eucalyptol
13	9.909	7379927	0.27	Ocimene <cis-, beta->
14	10.226	11927990	0.44	Terpinene <gamma->
15	10.521	20454040	0.76	Sabinene hydrate <cis->
16	11.053	4738144	0.18	Terpinolene
17	11.402	15527723	0.58	Sabinene hydrate <trans->
18	12.067	3592897	0.13	Menth-2-en-1-ol <cis-, para->
19	12.582	2668938	0.10	Menth-2-en-1-ol <trans-para->
20	13.200	316216	0.01	Pinocarvone
21	13.417	27137147	1.01	Terpineol <delta->
22	13.716	82738256	3.08	Terpinen-4-ol
23	13.906	1608300	0.06	Cryptone
24	14.207	258461650	9.62	Terpineol <alpha->
25	14.550	2510455	0.09	Piperitol<cis->
26	14.963	876203	0.03	Unknown
27	15.051	2433746	0.09	Nerol
28	15.374	1377535	0.05	Neral
29	16.171	565068	0.02	Geranial

Peak#	R.Time	Area	Area%	Name
30	16.315	3706334	0.14	Ascaridol glycol <trans->
31	17.660	3439715	0.13	Unknown
32	17.984	1169431	0.04	Elemene <delta->
33	18.311	740987	0.03	Cubebene <alpha->
34	18.909	961320	0.04	Ylangene <alpha->
35	19.026	769159	0.03	Copaene <alpha->
36	19.232	1656999	0.06	Menth-6-en-2,8-diol <trans-, para-> + Bourb
37	19.438	4535759	0.17	Elemene <beta->
38	19.907	189966	0.01	Gurjunene <alpha->
39	20.187	16496448	0.61	Caryophyllene
40	20.377	836179	0.03	Carvone hydrate
41	20.466	583422	0.02	Elemene <gamma->
42	20.670	1491302	0.06	Aromadendrene
43	20.893	330147	0.01	Clovene <alpha-, neo->
44	21.051	19789931	0.74	Humulene <alpha->
45	21.213	301974	0.01	Alloaromadendrene
46	21.547	1532310	0.06	Selina-4,11-diene
47	21.712	3325407	0.12	Germacrene D
48	21.860	7599037	0.28	Selinene <beta->
49	22.068	7442048	0.28	Viridiflorene + Bicyclogermacrene
50	22.238	789300	0.03	Bisabolene <beta->
51	22.495	162221	0.01	Cadinene <gamma->
52	22.609	132588	0.00	Selinene <7-epi-, alpha->
53	22.689	545290	0.02	Cadinene <delta->
54	23.457	655286	0.02	Elemol + Unknown
55	23.569	954011	0.04	Germacrene B
56	24.159	2049835	0.08	Spathulenol
57	24.283	2795963	0.10	Caryophyllene oxide
58	24.667	690339	0.03	Guaiol
59	25.039	2988450	0.11	Humulene epoxide II
60	25.825	2541081	0.09	Unknown
61	26.244	906922	0.03	Intermedeol<neo->
62	26.522	359692	0.01	Bulnesol
		2686073138	100.00	

Kosmetiniai alergenai: *-silpnas, **-vidutinio stiprumo, ***- stiprus alergenai

Analiz atliko

dr. Jurga B dien