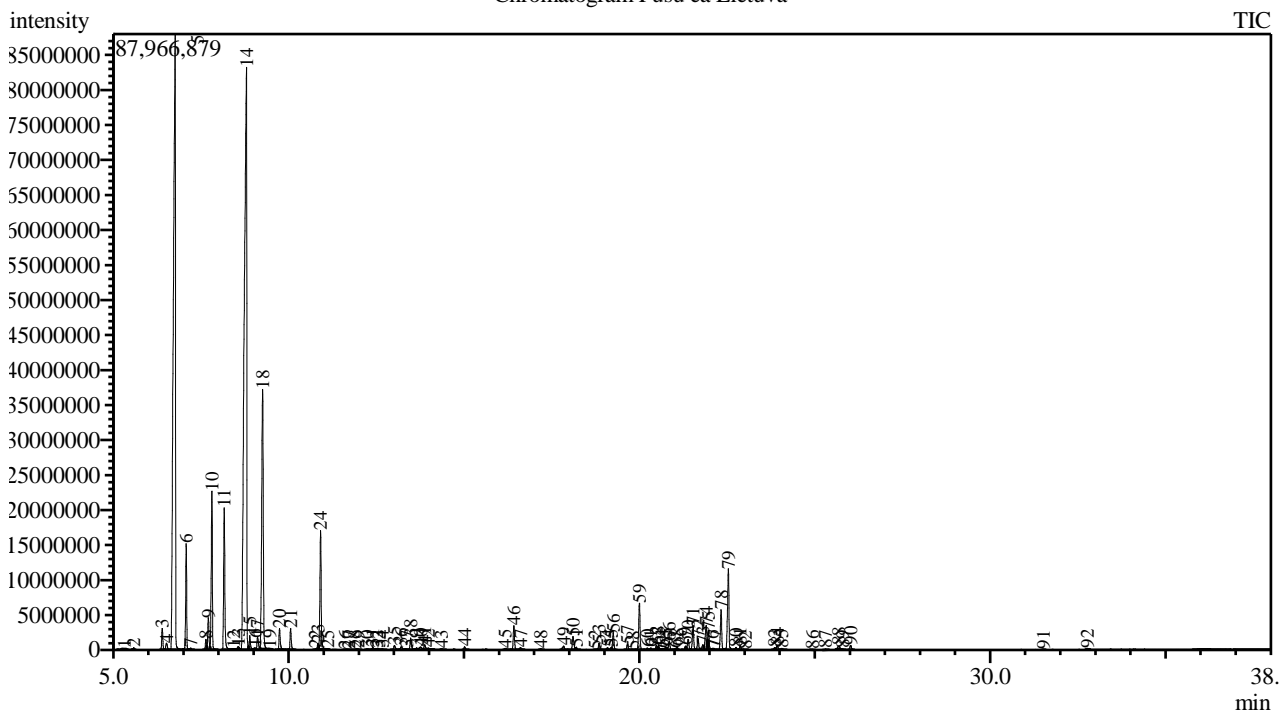


Analysis numb.: GC877  
 Analysis date: 2020 03 18  
 Sample name: Pušė  
 Botanical name: Pinus sylvestris  
 Sample batch num: 100426  
 Sample origin: Lietuva  
 Best before: 2022 12

Chromatogram Pusuė Lietuva



Peak Report TIC

Peak#	R.Time	Area	Area%	Name
1	5.271	352737	0.03	Cyclobutane <butyl->
2	5.583	474245	0.04	Cyclopentene <3,5-dimethylene-1,4,4-trimethyl->
3	6.395	6671123	0.51	Tricyclene
4	6.518	2733362	0.21	Thujene <alpha->
5	6.765	363223037	28.00	Pinene <alpha->
6	7.081	29301981	2.26	Camphene
7	7.211	561637	0.04	Thuja-2,4(10)-diene
8	7.643	3364428	0.26	Verbenene
9	7.712	10993663	0.85	Sabinene
10	7.813	49001803	3.78	Pinene <beta->
11	8.164	49006178	3.78	Myrcene
12	8.438	136237	0.01	Carene <delta-, 2->
13	8.564	1385724	0.11	Phellandrene <alpha->
14	8.797	409443175	31.56	Carene <delta-3->
15	8.893	5004380	0.39	Terpinene <alpha->
16	9.038	705679	0.05	Cymene <ortho->
17	9.116	5111591	0.39	Cymene <para->
18	9.258	117334992	9.05	Sylvestrene
19	9.456	291028	0.02	Ocimene <cis-, beta->
20	9.741	7258923	0.56	Ocimene <trans-, beta->
21	10.058	7045815	0.54	Terpinene <gamma->
22	10.760	291460	0.02	Cymenene <para->
23	10.835	1793797	0.14	Mentha-2,4(8)-diene <para->
24	10.911	42210552	3.25	Terpinolene

Peak#	R.Time	Area	Area%	Name
25	11.107	75266	0.01	Camphenone <6->
26	11.614	171845	0.01	Menthatriene <1,3,8-, para->
27	11.713	183721	0.01	Fenchol <endo->
28	11.899	193080	0.01	Menth-2-en-1-ol <cis-, para->
29	11.981	360231	0.03	Campholenal <alpha->
30	12.235	598176	0.05	Limonene oxide <cis->
31	12.401	1090832	0.08	Pinocarveol <trans->
32	12.518	194854	0.02	Camphor
33	12.566	251543	0.02	Verbenol <trans->
34	12.674	430645	0.03	Unknown
35	13.016	2040174	0.16	Mentha-1,5-dien-8-ol <para->
36	13.213	1582765	0.12	Mentha-1,5-dien-8-ol <para->
37	13.365	211325	0.02	Pinocamphone <cis->
38	13.480	4629170	0.36	Terpinen-4-ol
39	13.648	797785	0.06	Cymen-8-ol <meta->
40	13.765	1624360	0.13	Cymen-8-ol <para->
41	13.879	2105004	0.16	Terpineol <alpha->
42	13.989	963774	0.07	Methyl salicylate + Myrtenal
43	14.358	471116	0.04	Verbenone
44	15.018	1095042	0.08	Thymol methyl ether
45	16.176	856612	0.07	Unknown
46	16.423	8833651	0.68	Bornyl acetate
47	16.610	988350	0.08	2-Undecanone
48	17.186	415763	0.03	Unknown
49	17.842	1929491	0.15	Elemene <delta->
50	18.108	5760248	0.44	Terpinyl acetate <alpha->
51	18.203	919203	0.07	Longipinene <alpha->
52	18.743	247778	0.02	Cyclosativene
53	18.852	2367658	0.18	Copaene <alpha->
54	19.096	1039944	0.08	Bourbonene <beta->
55	19.203	256002	0.02	Cubebene <beta->
56	19.255	6234625	0.48	Elemene <beta->
57	19.663	2174307	0.17	Longifolene
58	19.816	126110	0.01	Bergamotene <alpha-, cis->
59	20.002	18115955	1.40	Caryophyllene <(E)->
60	20.226	791991	0.06	Copaene <beta->
61	20.328	851593	0.07	Bergamotene <alpha-, trans->
62	20.486	1787269	0.14	Aromandendrene
63	20.548	1652733	0.13	Guaia-6,9-diene
64	20.650	546532	0.04	Muurola-3,5-diene <cis->
65	20.751	1212902	0.09	Muurola-3,5-diene <trans->
66	20.852	3839615	0.30	Humulene <alpha->
67	21.013	403721	0.03	Unknown
68	21.079	1091542	0.08	Muurola-4(14),5-diene <cis->
69	21.316	1428155	0.11	Cadina-1(6),4-diene<trans->
70	21.393	4652750	0.36	Murolene <gamma->
71	21.532	9562609	0.74	Germacrene D
72	21.673	4473364	0.34	Selinene <beta->
73	21.810	2420637	0.19	Muurola-4(14),5-diene <trans->
74	21.907	11744175	0.91	Bicyclogermacrene
75	21.972	7004022	0.54	Murolene <alpha->
76	22.073	510950	0.04	Farnesene <(E,E)-, alpha->
77	22.128	608914	0.05	Amorphene <delta->
78	22.331	15408943	1.19	Cadinene <gamma->
79	22.538	32718596	2.52	Cadinene <delta->
80	22.756	1010592	0.08	Cadina-1,4-diene <trans->
81	22.878	1587683	0.12	Cadinene <alpha->
82	23.017	143293	0.01	Calacorene <alpha->
83	23.855	840861	0.06	Germacrene D-4-ol
84	23.932	1843250	0.14	Spathulenol
85	24.061	762921	0.06	Caryophyllene oxide
86	24.936	184206	0.01	Diepicubenol <1,10->
87	25.305	349983	0.03	Epicubenol
88	25.688	1994757	0.15	T-Murolol
89	25.796	340868	0.03	Murolol <alpha->
90	26.024	1907993	0.15	Cadinol <alpha->
91	31.517	127794	0.01	Manoyl oxide <13-epi->
92	32.778	317838	0.02	Labd-(13E)-8,15-diol
		1297157004	100.00	



Analiz atliko

dr. Jurga B. dien