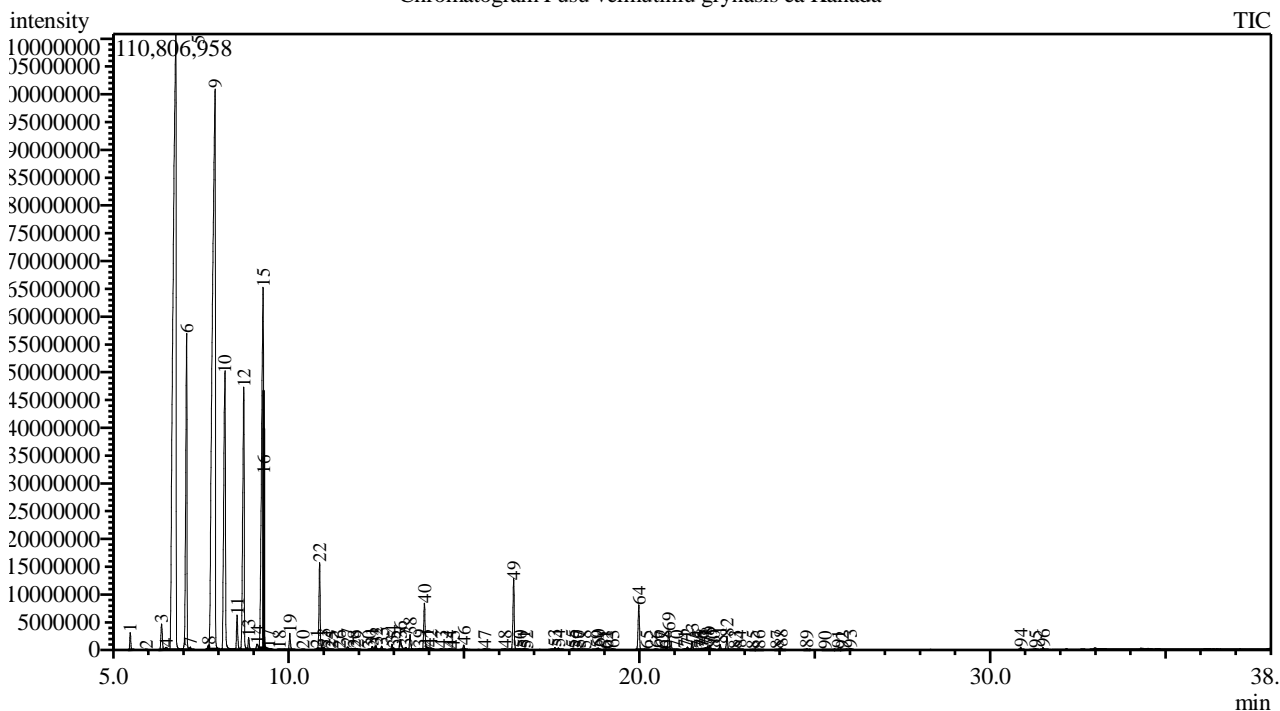


Analysis numb.: GC881
 Analysis date: 2020 03 25
 Sample name: Puš veimutini grynasis ea
 Botanical name: Pinus strobus L.
 Sample batch num: B-PISTCAN06RC
 Sample origin: Kanada
 Best before: 2021 08

Chromatogram Pusu veimutiniu grynasis ea Kanada



Peak Report TIC

Peak#	R.Time	Area	Area%	Name
1	5.484	6168243	0.28	Santene
2	5.945	71997	0.00	Bornylene
3	6.376	13243512	0.59	Tricyclene
4	6.510	1841462	0.08	Thujene <alpha->
5	6.782	661953215	29.70	Pinene <alpha->
6	7.093	141752555	6.36	Camphene
7	7.198	1050064	0.05	Thuja-2,4(10)-diene
8	7.720	1427204	0.06	Sabinene
9	7.902	599704452	26.91	Pinene <beta->
10	8.185	168621036	7.57	Myrcene
11	8.535	15285911	0.69	Phellandrene <alpha->
12	8.724	139863464	6.28	Carene <delta-3->
13	8.865	5389629	0.24	Terpinene <alpha->
14	9.107	4047054	0.18	Cymene <para->
15	9.271	247875523	11.12	Limonene* + Sylvestrene
16	9.293	18223413	0.82	Phellandrene <beta->
17	9.434	550311	0.02	Ocimene <cis-, beta->
18	9.743	222273	0.01	Ocimene <trans-, beta->
19	10.038	6976651	0.31	Terpinene <gamma->
20	10.409	141150	0.01	Unknown
21	10.810	555024	0.02	Mentha-2,4(8)-diene <para->
22	10.883	36605981	1.64	Terpinolene
23	11.009	1078558	0.05	Camphenone <6->
24	11.168	226593	0.01	Pinene oxide <alpha->

Peak#	R.Time	Area	Area%	Name
25	11.234	123601	0.01	Perillene
26	11.445	203025	0.01	Unknown
27	11.685	2531009	0.11	Fenchol <endo->
28	11.877	448474	0.02	Menth-2-en-1-ol <cis-, para->
29	11.958	654533	0.03	Campholenal <alpha->
30	12.295	140068	0.01	Nopinone
31	12.383	1666022	0.07	Pinocarveol <trans->
32	12.493	2151835	0.10	Camphor
33	12.656	1630600	0.07	Camphene hydrate
34	12.946	2601852	0.12	Pinocamphone <trans->
35	13.005	504858	0.02	Pinocarvone
36	13.186	7405137	0.33	Borneol
37	13.345	1260215	0.06	Pinocamphone <cis->
38	13.466	7176536	0.32	Terpinen-4-ol
39	13.743	1466636	0.07	Cymen-8-ol <para->
40	13.871	22344726	1.00	Terpineol <alpha->
41	13.961	502717	0.02	Myrtenal
42	14.055	550025	0.02	Myrtenol
43	14.355	520297	0.02	Verbenone
44	14.594	480683	0.02	Fenchyl acetate
45	14.698	136551	0.01	Carveol <trans-> + Coahuilensol methyl ethe.
46	14.993	2045955	0.09	Thymol methyl ether
47	15.595	638611	0.03	Piperitone
48	16.168	627312	0.03	Unknown
49	16.420	32819379	1.47	Bornyl acetate
50	16.591	509390	0.02	2-Undecanone
51	16.713	370112	0.02	Unknown
52	16.782	90120	0.00	Pinocarvyl acetate <trans->
53	17.592	899299	0.04	Unknown
54	17.697	1104175	0.05	Elemene <delta->
55	18.093	774977	0.03	Terpinyl acetate <alpha->
56	18.177	160941	0.01	Longipinene <alpha->
57	18.290	490055	0.02	2-Dodecanone
58	18.438	273280	0.01	Neryl acetate
59	18.793	352789	0.02	Ylangene <alpha->
60	18.829	756170	0.03	Copaene <alpha->
61	19.016	235754	0.01	Myrtanyl acetate
62	19.069	101144	0.00	Bourbonene <beta->
63	19.238	588599	0.03	Elemene <beta->
64	19.988	21649819	0.97	Caryophyllene <(E)->
65	20.209	215629	0.01	Copaene <beta->
66	20.470	361547	0.02	Aromadendrene
67	20.637	83107	0.00	Muurola-3,5-diene <cis->
68	20.736	263817	0.01	Muurola-3,5-diene <trans->
69	20.835	8892211	0.40	Humulene <alpha->
70	21.063	463559	0.02	Muurola-4(14),5-diene <cis->
71	21.292	391100	0.02	Cadina-1(6),4-diene <trans->
72	21.371	1223936	0.05	Murolene <gamma->
73	21.511	4049426	0.18	Germacrene D
74	21.654	266535	0.01	Selinene <beta->
75	21.738	249747	0.01	2-Tridecanone
76	21.796	124410	0.01	Amorphene <gamma->
77	21.882	596294	0.03	Bicyclgermacrene
78	21.947	859516	0.04	Murolene <alpha->
79	22.011	2104182	0.09	Bisabolene <(Z)-, gamma->
80	22.104	248391	0.01	Amorphene <delta->
81	22.305	2435964	0.11	Cadinene <gamma->
82	22.502	6439109	0.29	Cadinene <delta->
83	22.734	225518	0.01	Cadina-1,4-diene <trans->
84	22.860	377436	0.02	Cadinene <alpha->
85	23.239	365229	0.02	Unknown
86	23.402	522119	0.02	Nerolidol <(E)->
87	23.920	445630	0.02	Spathulenol
88	24.045	1140037	0.05	Caryophyllene oxide
89	24.774	566997	0.03	Humulene epoxide II
90	25.290	241690	0.01	Epicubenol
91	25.680	633532	0.03	T-Murolol
92	25.783	98487	0.00	Murolol <alpha->
93	26.013	864429	0.04	Cadinol <alpha->

Peak#	R.Time	Area	Area%	Name
94	30.878	814285	0.04	Camphorene <m->
95	31.301	293301	0.01	Camphorene <p->
96	31.512	758446	0.03	Manoyl oxide <13-epi->
		2228478172	100.00	

Kosmetiniai alergenai: *-silpnas, **-vidutinio stiprumo, ***- stiprus alergenai

Analiz atliko

dr. Jurga B dien