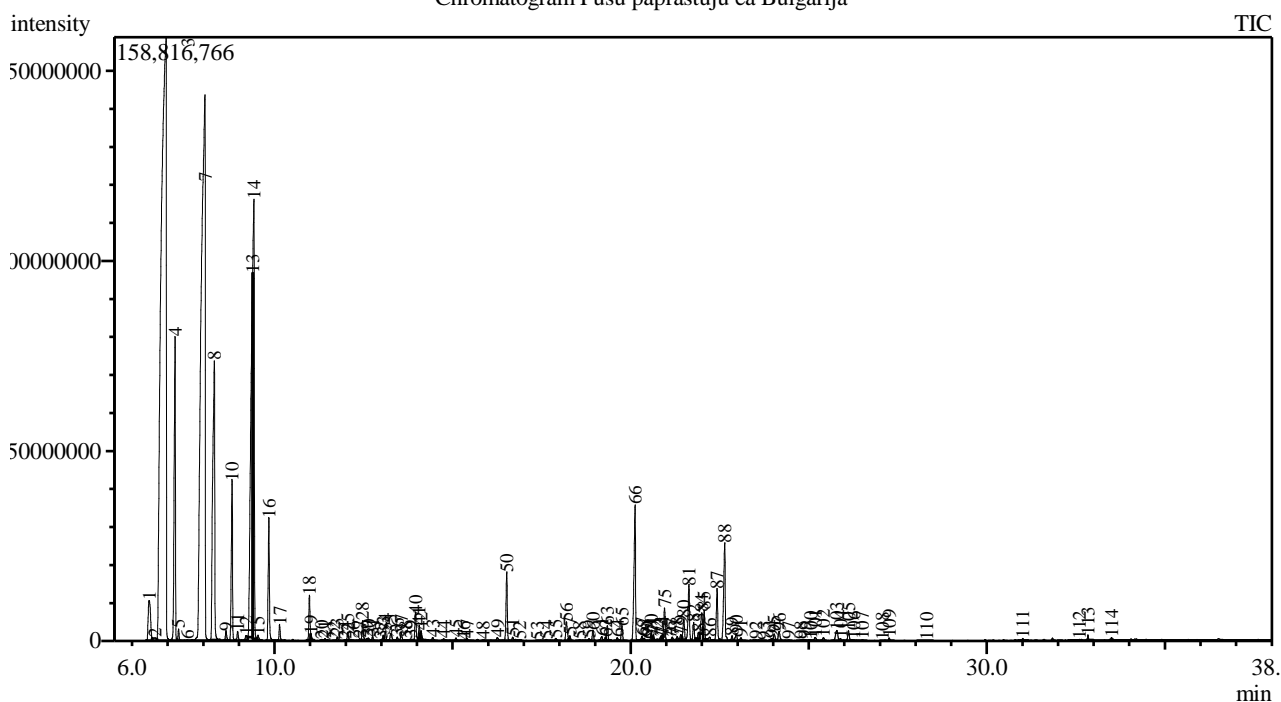


Analysis numb.: GC640
 Analysis date: 2019 01 09
 Sample name: Paprast j puš ea
 Botanical name: Pinus Sylvestris (Scotch Pine)
 Sample batch num: PSDSBEE00118
 Sample origin: Bulgarija
 Best before:

Chromatogram Pusu paprastuju ea Bulgarija



Peak Report TIC

Peak#	R.Time	Area	Area%	Name
1	6.482	49391143	1.03	Tricyclene
2	6.644	5236884	0.11	Thujene <alpha->
3	6.953	1494189809	31.29	Pinene <alpha->
4	7.208	202709733	4.25	Camphene
5	7.306	6449196	0.14	Thuja-2,4(10)-diene
6	7.553	1151411	0.02	Benzaldehyde
7	8.054	1115238379	23.36	Pinene <beta->
8	8.309	285850286	5.99	Myrcene
9	8.643	6205700	0.13	Phellandrene <alpha->
10	8.811	100179426	2.10	Carene <delta-3->
11	8.968	6357350	0.13	Terpinene <alpha->
12	9.210	4799111	0.10	Cymene <para->
13	9.387	369981948	7.75	Limonene*
14	9.421	315133973	6.60	Sylvestrene
15	9.537	3575085	0.07	Ocimene <cis-, beta->
16	9.844	78874639	1.65	Ocimene <trans-, beta->
17	10.147	9992921	0.21	Terpinene <gamma->
18	10.979	26569741	0.56	Terpinolene
19	11.020	2274189	0.05	Cymenene <para->
20	11.327	694208	0.01	Perillene
21	11.412	1321141	0.03	Nonanal
22	11.664	177428	0.00	Menthatriene<1,3,8-para->
23	11.762	2238676	0.05	Fenchyl alcohol
24	11.973	430701	0.01	Mentha-2,8-dien-1-ol <trans-, para->

Peak#	R.Time	Area	Area%	Name
25	12.057	5392087	0.11	Campholenal <alpha->
26	12.202	935854	0.02	Unknown
27	12.392	1423009	0.03	Nopinone
28	12.475	12464614	0.26	Pinocarveol <trans->
29	12.594	720492	0.02	Camphor
30	12.638	1464157	0.03	Verbenol <trans->
31	12.757	2754631	0.06	
32	12.991	576285	0.01	
33	13.052	2756517	0.06	Pinocamphone <trans->
34	13.110	5802839	0.12	Pinocarvone
35	13.272	7426378	0.16	Borneol + Mentha-1,5-dien-8-ol <para->
36	13.450	2532349	0.05	Pinocamphone <cis->
37	13.563	6279096	0.13	Terpinen-4-ol
38	13.687	962611	0.02	Myrtanal
39	13.828	2697809	0.06	Cymen-8-ol + Cryptone
40	13.962	19553565	0.41	Terpineol <alpha->
41	14.064	7418286	0.16	Myrtenal
42	14.115	6755219	0.14	Myrtenol
43	14.446	2788346	0.06	Verbenone
44	14.753	2660359	0.06	Carveol <trans->
45	15.098	3002644	0.06	Thymol methyl ether
46	15.310	677630	0.01	Cumin aldehyde
47	15.405	2562530	0.05	Carvone
48	15.862	1429843	0.03	Dec-(2E)-enal
49	16.259	3636406	0.08	Unknown
50	16.524	45997029	0.96	Bornyl acetate
51	16.684	2567636	0.05	2-Undecanone
52	16.883	306940	0.01	Pinocarvyl acetate <trans->
53	17.374	662628	0.01	2,4-Decadienal, (E,E)-
54	17.632	1987865	0.04	Dihydrocarvyl acetate
55	17.901	2579428	0.05	Elemene <delta->
56	18.195	15483403	0.32	Terpinyl acetate <alpha->
57	18.293	3313241	0.07	Longipinene <alpha->
58	18.570	1019366	0.02	11-Dodecen-2-one
59	18.832	2455273	0.05	Cyclosativene
60	18.945	7152665	0.15	Copaene <alpha->
61	19.191	3873597	0.08	Bourbonene <beta->
62	19.303	975303	0.02	Cubebene <beta->
63	19.345	10039202	0.21	Elemene <beta->
64	19.627	2596718	0.05	Eugenol <methyl->
65	19.759	10637836	0.22	Longifolene
66	20.124	106174416	2.22	Caryophyllene <(E)->
67	20.316	2396159	0.05	Copaene <beta->
68	20.381	1520667	0.03	Elemene <gamma->
69	20.470	261702	0.01	Maaliene <alpha->
70	20.576	5435705	0.11	Aromadendrene
71	20.637	3581031	0.08	Guaia-6,9-diene
72	20.740	556594	0.01	Muurola-3,5-diene <cis->
73	20.844	2824721	0.06	Muurola-3,5-diene <trans->
74	20.894	584217	0.01	Farnesene <(E)-, beta->
75	20.950	23799516	0.50	Humulene <alpha->
76	21.103	740796	0.02	Cadina-1(6),4-diene <cis->
77	21.169	1869871	0.04	Muurola-4(14),5-diene <cis->
78	21.307	2084704	0.04	Unknown
79	21.407	3842857	0.08	Cadina-1(6),4-diene <trans->
80	21.491	15929273	0.33	Murolene <gamma->
81	21.639	42836938	0.90	Germacrene D
82	21.773	13255627	0.28	Selinene <beta->
83	21.904	5010637	0.10	Muurola-4(14),5-diene<trans->
84	21.997	16020899	0.34	Bicyclgermacrene
85	22.062	19436779	0.41	Murolene <alpha->
86	22.224	4521808	0.09	Amorphene <delta->
87	22.430	38598246	0.81	Cadinene <gamma->
88	22.642	80241263	1.68	Cadinene <delta->
89	22.852	3586801	0.08	Cadina-1,4-diene <trans->
90	22.970	6234805	0.13	Cadinene <alpha->
91	23.099	2511403	0.05	Calacorene <alpha->
92	23.518	1892582	0.04	Nerolidol <(E)->
93	23.743	827776	0.02	Hexenyl benzoate <(3Z)->

Peak#	R.Time	Area	Area%	Name
94	23.957	1291955	0.03	Germacrene D-4-ol
95	24.031	4624620	0.10	Spathulenol
96	24.172	9169043	0.19	Caryophyllene oxide
97	24.445	992379	0.02	Salvial-4(14)-en-1-one
98	24.781	1188508	0.02	Tetradecanal
99	24.904	1854633	0.04	Humulene epoxide II
100	25.053	1175424	0.02	Diepicubenol <1,10->
101	25.188	3946907	0.08	Unknown
102	25.417	2773654	0.06	Epicubenol
103	25.793	12861863	0.27	T-Muurolol
104	25.894	2063563	0.04	Muurolol <alpha->
105	26.120	8922089	0.19	Cadinol <alpha->
106	26.270	1037190	0.02	E-7-Tetradecenol
107	26.512	1702489	0.04	Unknown
108	27.066	186446	0.00	Juniper camphor
109	27.263	2042374	0.04	Hexadecanal
110	28.314	473937	0.01	Benzyl benzoate*
111	31.014	1853221	0.04	Sandaracopimara-8(14),15-diene
112	32.606	863043	0.02	Abietadiene
113	32.844	2624209	0.05	Labd-(13E)-8,15-diol
114	33.507	1094749	0.02	Sandaracopimarinal
		4774664853	100.00	

Kosmetiniai alergenai: *-silpnas, **-vidutinio stiprumo, ***- stiprus alergenai

Analiz atliko

dr. Jurga B dien