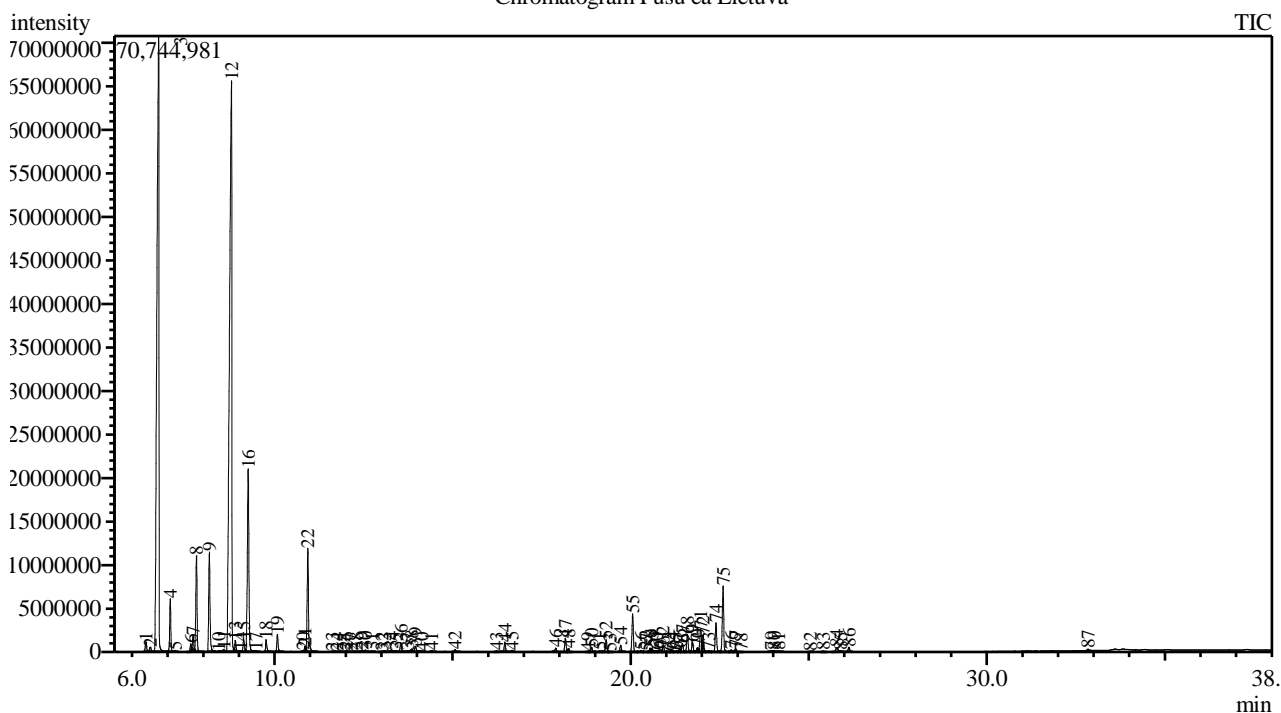


Analysis numb.: GC1000
 Analysis date: 2020 10 07
 Sample name: Pusu ekologiskas ea
 Botanical name: Pinus sylvestris
 Sample batch num: 200708
 Sample origin: Lietuva
 Best before: 2022 07

Chromatogram Pusu ea Lietuva



Peak Report TIC

Peak#	R.Time	Area	Area%	Name
1	6.392	3051165	0.34	Tricyclene
2	6.515	1796401	0.20	Thujene <alpha->
3	6.747	282011152	31.50	Pinene <alpha->
4	7.074	13677355	1.53	Camphene
5	7.212	389915	0.04	Thuja-2,4(10)-diene
6	7.650	2208603	0.25	Verbenene
7	7.715	4941826	0.55	Sabinene
8	7.810	27381107	3.06	Pinene <beta->
9	8.171	29590741	3.30	Myrcene
10	8.439	71443	0.01	Carene <delta-2->
11	8.575	858615	0.10	Phellandrene <alpha->
12	8.792	299820336	33.49	Carene <delta-3->
13	8.900	3292029	0.37	Terpinene <alpha->
14	9.052	359000	0.04	Cymene <meta->
15	9.135	3915552	0.44	Cymene <para->
16	9.261	62963350	7.03	Sylvestrene
17	9.475	282349	0.03	Ocimene <cis-, beta->
18	9.764	3472434	0.39	Ocimene <trans-, beta->
19	10.082	4783072	0.53	Terpinene <gamma->
20	10.799	263093	0.03	Cymenene <para->
21	10.857	1228363	0.14	Mentha-2,4(8)-diene <para->
22	10.936	31209150	3.49	Terpinolene
23	11.628	112126	0.01	Menthatriene<1,3,8-para->
24	11.764	208370	0.02	Fenchol <endo->

Peak#	R.Time	Area	Area%	Name
25	11.943	90505	0.01	Menth-2-en-1-ol <cis->
26	12.024	288418	0.03	Campholenal <alpha->
27	12.160	93660	0.01	Limonene oxide <cis->
28	12.303	325090	0.04	2,6-Dimethyl-1,3(E),5(E),7-octatetraene
29	12.463	575174	0.06	Pinocarveol <trans->
30	12.554	584140	0.07	Camphor
31	12.740	336735	0.04	Camphene hydrate + Unknown
32	13.018	225856	0.03	Pinocamphone <trans->
33	13.092	496920	0.06	Mentha-1,5-dien-8-ol <para->
34	13.287	1039940	0.12	Borneol
35	13.411	335713	0.04	Pinocamphone <cis->
36	13.544	2994575	0.33	Terpinen-4-ol
37	13.736	576232	0.06	Cymen-8-ol <para->
38	13.852	1031538	0.12	Unknown
39	13.955	2269253	0.25	Terpineol <alpha->
40	14.143	221914	0.02	Myrtenol
41	14.416	356478	0.04	Verbenone
42	15.069	688333	0.08	Thymol methyl ether
43	16.232	356835	0.04	Oct-2-enyl acetate <trans->
44	16.469	2826311	0.32	Bornyl acetate
45	16.665	444199	0.05	2-Undecanone
46	17.897	1455169	0.16	Elemene <delta->
47	18.168	4320714	0.48	Terpinyl acetate <alpha->
48	18.257	1027094	0.11	Longipinene <alpha->
49	18.798	218144	0.02	Ylangene <alpha->
50	18.904	1384146	0.15	Copaene <alpha->
51	19.140	438435	0.05	Bourbonene <beta->
52	19.314	3958418	0.44	Elemene <beta->
53	19.417	140019	0.02	Cubebene <beta->
54	19.721	2071269	0.23	Longifolene
55	20.057	11806918	1.32	Caryophyllene
56	20.287	554501	0.06	Copaene <beta->
57	20.442	149293	0.02	Maaliene <alpha->
58	20.547	1220251	0.14	Aromandendrene
59	20.602	1137435	0.13	Guaia-6,9-diene
60	20.716	405146	0.05	Muurola-3,5-diene <cis->
61	20.809	1087510	0.12	Muurola-3,5-diene <trans->
62	20.913	2210883	0.25	Humulene <alpha->
63	21.070	251457	0.03	Unknown
64	21.146	694857	0.08	Muurola-4(14),5-diene <cis->
65	21.282	467986	0.05	Unknown
66	21.375	1082610	0.12	Cadina-1(6),4-diene <trans->
67	21.455	2915273	0.33	Murolene <gamma->
68	21.594	5647565	0.63	Germacrene D
69	21.738	3051230	0.34	Selinene <beta->
70	21.877	1556785	0.17	Muurola-4(14),5-diene<trans->
71	21.967	8325631	0.93	Bicyclgermacrene
72	22.035	4951498	0.55	Murolene <alpha->
73	22.192	618500	0.07	Farnesene ,(E,E)-, alpha-> + Amorphene <de
74	22.397	9588717	1.07	Cadinene <gamma->
75	22.597	20760777	2.32	Cadinene <delta->
76	22.826	667285	0.07	Cadina-1,4-diene <trans->
77	22.947	997368	0.11	Cadinene <alpha->
78	23.103	71739	0.01	Calacorene <alpha->
79	23.952	470761	0.05	Germacrene D-4-ol
80	24.036	482111	0.05	Spathulenol
81	24.151	362737	0.04	Caryophyllene oxide
82	25.048	133747	0.01	Diepicubenol <1,10->
83	25.409	273436	0.03	Epicubenol
84	25.793	2090838	0.23	T-Murolol
85	25.897	272893	0.03	Murolol <alpha->
86	26.128	1625253	0.18	Cadinol <alpha->
87	32.846	362312	0.04	Labd-(13E)-8,15-diol
		895354077	100.00	

Kosmetiniai alergenai: *-silpnas, **-vidutinio stiprumo, ***- stiprus alergenai

Analiz atliko

dr. Jurga B dien