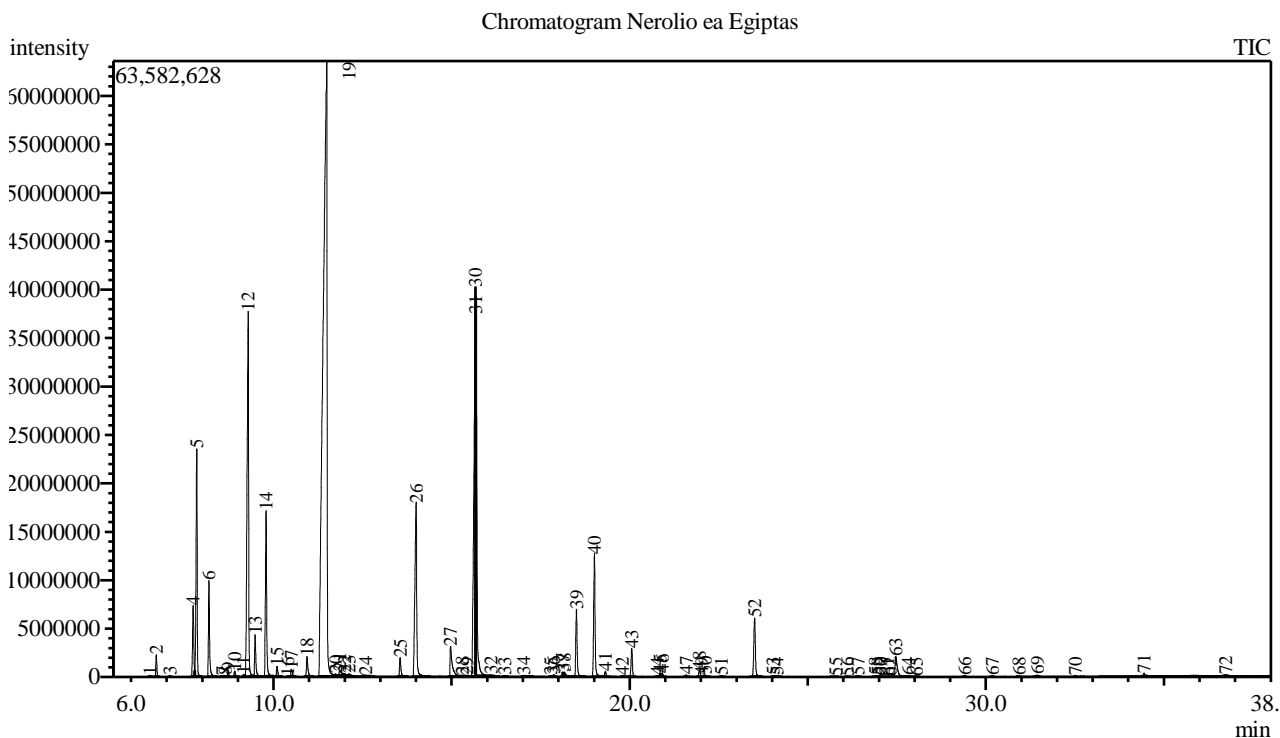


Analysis numb.: GC1015
 Analysis date: 2020 10 21
 Sample name: Nerolio ea
 Botanical name: Citrus aurantium var amara
 Sample batch num: LOT 0028861
 Sample origin: Egiptas
 Best before: 2021 10



Peak Report TIC

Peak#	R.Time	Area	Area%	Name
1	6.532	317264	0.03	Thujene <alpha->
2	6.708	4466421	0.39	Pinene <alpha->
3	7.095	233303	0.02	Camphene
4	7.742	17935243	1.55	Sabinene
5	7.845	52855055	4.57	Pinene <beta->
6	8.186	21747748	1.88	Myrcene
7	8.573	217244	0.02	Phellandrene <alpha->
8	8.648	127393	0.01	Linalool oxide <dehydro-, cis->
9	8.723	1183764	0.10	Carene <delta-3->
10	8.908	1429237	0.12	Terpinene <alpha->
11	9.158	564500	0.05	Cymene <para->
12	9.289	115113360	9.95	Limonene*
13	9.482	10131074	0.88	Ocimene <cis-, beta->
14	9.791	41203066	3.56	Ocimene <trans-, beta->
15	10.098	2468068	0.21	Terpinene <gamma->
16	10.400	82679	0.01	Sabinene hydrate <cis->
17	10.502	2072222	0.18	Linalool oxide <cis->
18	10.939	5864182	0.51	Terpinolene
19	11.495	491177453	42.46	Linalool*
20	11.748	259439	0.02	Nona-1,3,7-triene <4,8-dimethyl-, (E)->
21	11.859	2372921	0.21	Phenylethyl alcohol
22	12.000	812174	0.07	Menth-2-en-1-ol <cis-, para->
23	12.121	606584	0.05	Alloocimene
24	12.587	438064	0.04	Benzeneacetonitrile

Peak#	R.Time	Area	Area%	Name
25	13.555	5317866	0.46	Terpinen-4-ol
26	14.005	64069156	5.54	Terpineol <alpha->
27	14.970	13379466	1.16	Nerol
28	15.299	174785	0.02	Neral
29	15.440	39264	0.00	Carvone
30	15.673	123021592	10.63	Linalyl acetate
31	15.683	70955809	6.13	Geraniol*
32	16.110	294271	0.03	Geranial
33	16.486	82603	0.01	Bornyl acetate
34	17.023	695455	0.06	Indole
35	17.783	170632	0.01	Linalyl propionate
36	17.868	503062	0.04	Elemene <delta->
37	18.112	1223761	0.11	Methyl anthranilate
38	18.165	2127324	0.18	Terpinyl acetate <alpha->
39	18.507	18503527	1.60	Neryl acetate
40	19.012	34942936	3.02	Geranyl acetate
41	19.319	1499127	0.13	Elemene <beta->
42	19.798	330477	0.03	Anthranilate <methyl-, N-methyl->
43	20.059	7592870	0.66	Caryophyllene
44	20.779	195538	0.02	Dihydropseudoionone
45	20.854	858614	0.07	Farnesene <(E)-, beta->
46	20.914	1021523	0.09	Humulene <alpha->
47	21.589	486025	0.04	Germacrene D
48	21.962	1810970	0.16	Bicyclogermacrene
49	22.020	69296	0.01	Muurolole <alpha->
50	22.120	506772	0.04	Farnesene <(E,E)-, alpha->
51	22.574	359921	0.03	Cadinene <delta->
52	23.510	18590667	1.61	Nerolidol <(E)->
53	24.031	266133	0.02	Spathulenol
54	24.141	490254	0.04	Caryophyllene oxide
55	25.786	226930	0.02	T-Muurolole
56	26.116	131552	0.01	Cadinol <alpha->
57	26.413	344979	0.03	8-Hexadecene
58	26.899	237133	0.02	Heptadecane
59	26.977	260319	0.02	Sinensal <beta->
60	27.053	186681	0.02	Farnesal <(2E,6Z)->
61	27.241	154018	0.01	Pentadecanal
62	27.316	104640	0.01	Farnesal <(2Z,6E)->
63	27.472	9450324	0.82	Farnesol <(2E,6E)-> **
64	27.829	476334	0.04	Farnesal <(2E,6E)->
65	28.054	225930	0.02	Sinensal <alpha->
66	29.399	214453	0.02	Farnesyl acetate
67	30.183	179982	0.02	Nonadecane
68	30.933	80140	0.01	Camphorene <m->
69	31.442	309696	0.03	Unknown
70	32.511	59801	0.01	Eicosane
71	34.446	546286	0.05	Docosane
72	36.735	341086	0.03	Tetracosane
		1156788438	100.00	

Kosmetiniai alergenai: *-silpnas, **-vidutinio stiprumo, ***- stiprus alergenai

Analiz atliko

dr. Jurga B dien