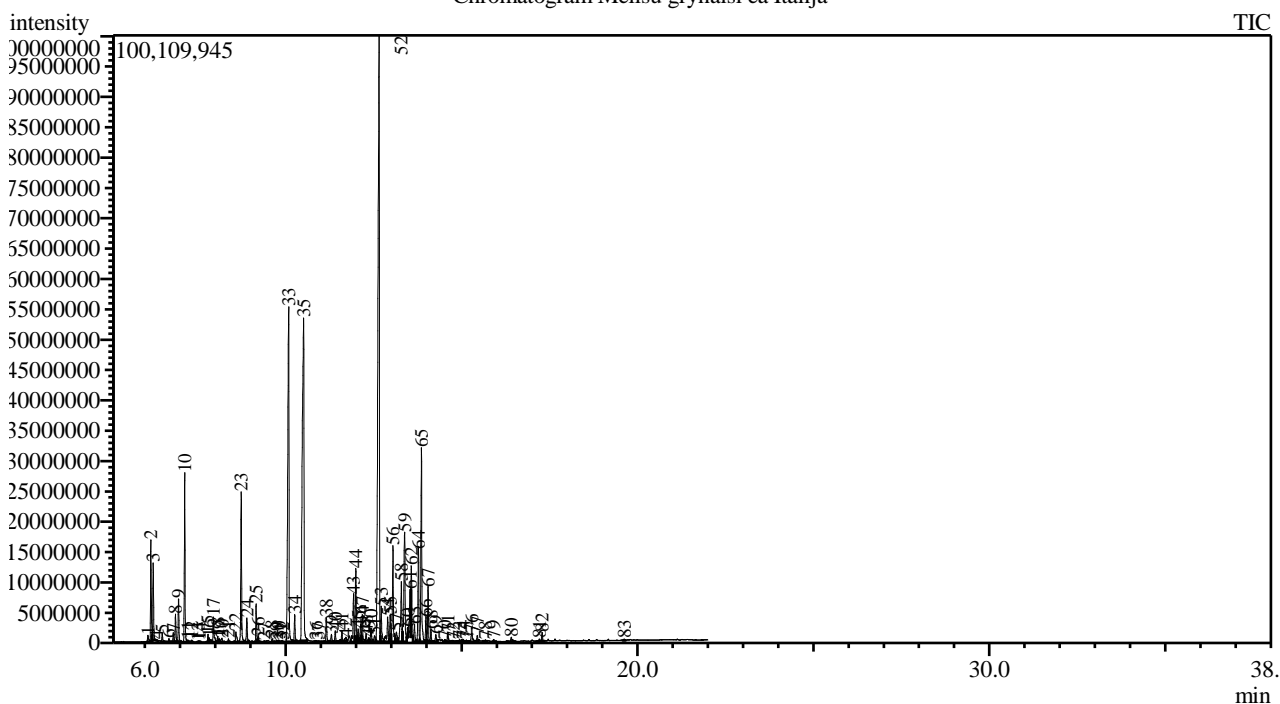


Analysis numb.: GC802
 Analysis date: 2019 11 20
 Sample name: Melis grynasis ea
 Botanical name: Melissa officinalis
 Sample batch num: MLS-2A-TE-2018/18
 Sample origin: Italija
 Best before: 2022 01

Chromatogram Melisu grynaisi ea Italija



Peak Report TIC

Peak#	R.Time	Area	Area%	Name
1	6.084	2316737	0.19	1-Octen-3-ol
2	6.168	25733569	2.15	Hept-5-en-2-one <6-methyl->
3	6.235	18530994	1.55	Myrcene
4	6.330	230909	0.02	Hexanol <ethyl->
5	6.491	2465022	0.21	Cycloheptane <1,3,5-tris(methylene)->
6	6.680	1161809	0.10	Terpinene <alpha->
7	6.806	2415498	0.20	Cymene <para->
8	6.869	7444494	0.62	Limonene*
9	6.955	10479827	0.88	Ocimene <cis-, beta->
10	7.130	40987124	3.43	Ocimene <trans-, beta->
11	7.221	261312	0.02	Bergamal
12	7.329	418468	0.03	Terpinene <gamma->
13	7.508	183930	0.02	Mentha-3,8-diene <para->
14	7.548	283688	0.02	Linalool oxide <trans->
15	7.792	1993739	0.17	Terpinolene
16	7.823	1124898	0.09	Cymenene <para->
17	7.946	8080209	0.68	Linalool*
18	8.067	1452542	0.12	Unknown
19	8.111	971426	0.08	Rose oxide <cis->
20	8.186	1773295	0.15	Methatriene <1,3,8-, para-> + Sabina ketone
21	8.373	895178	0.07	Rose oxide <trans-> + Alloocimene
22	8.585	4361311	0.36	Isocitral <exo-> + Unknown
23	8.737	40822938	3.41	Citronellal
24	8.896	7424163	0.62	Isocitral <(Z)->

Peak#	R.Time	Area	Area%	Name
25	9.160	9679429	0.81	Isocitral <(E)->
26	9.219	1881056	0.16	Unknown
27	9.390	582571	0.05	Terpineol <alpha->
28	9.615	1151706	0.10	Piperitol <trans-> + Carveol <trans->
29	9.746	638343	0.05	Isophorone <4-methylene->
30	9.807	596378	0.05	Cyclocitral<beta->
31	9.867	268287	0.02	Citronellol*
32	9.917	435608	0.04	Unknown
33	10.086	137574520	11.50	Neral
34	10.256	7384304	0.62	Citronellate <methyl->
35	10.511	179382806	15.00	Geranial
36	10.861	366837	0.03	Geranyl formate
37	10.932	221129	0.02	Undecanal
38	11.158	6899025	0.58	Geranic acid <methyl-> ester
39	11.302	2288597	0.19	1,4-Methano-1H-indene, octahydro-4-methyl
40	11.412	2865657	0.24	1,4-Methano-1H-indene, octahydro-4-methyl
41	11.601	3231140	0.27	Cubebene <alpha->
42	11.713	2019162	0.17	Eugenol**
43	11.932	15499263	1.30	Neryl acetate
44	11.995	21146111	1.77	Copaene <alpha->
45	12.061	4108764	0.34	Geranyl acetate + Unknown
46	12.133	6091375	0.51	Bourbonene <beta->
47	12.180	8573810	0.72	Elemene <beta->
48	12.289	2698730	0.23	Unknown
49	12.366	1539970	0.13	Cubebene <beta->
50	12.425	4860167	0.41	Caryophyllene <(Z)->
51	12.530	3099580	0.26	Unknown
52	12.655	275997739	23.07	Caryophyllene <(E)->
53	12.716	11665463	0.98	Ylangene <beta->
54	12.900	11201273	0.94	Farnesene <(E)-, beta->
55	12.975	8073854	0.67	Aromadendrene
56	13.051	31452987	2.63	Humulene <alpha->
57	13.149	4376188	0.37	Muurola-4(14),5-diene <cis->
58	13.290	24016969	2.01	Murolene <gamma->
59	13.382	45521187	3.81	Germacrene D
60	13.464	2754235	0.23	Selinene <beta->
61	13.551	12975149	1.08	Viridiflorol
62	13.571	18548577	1.55	Murolene <alpha->
63	13.662	6065851	0.51	Amorphene <delta->
64	13.775	26687410	2.23	Cadinene <gamma->
65	13.861	59431204	4.97	Cadinene <delta->
66	13.989	6447446	0.54	Cadina-1,4-diene <trans->
67	14.049	14354692	1.20	Cadinene <alpha->
68	14.130	3601804	0.30	Calacorene <alpha->
69	14.269	3086001	0.26	Unknown
70	14.522	1078479	0.09	Caryophyllenyl alcohol
71	14.609	3047928	0.25	Caryophyllene oxide
72	14.770	574073	0.05	Salvial-4(14)-en-1-one
73	14.944	1195305	0.10	Oplopenone <beta->
74	15.043	1351608	0.11	Corocalene <alpha->
75	15.138	927629	0.08	Epicubenol
76	15.287	4968145	0.42	T-Muurolol + Muurolol <alpha->
77	15.448	2106888	0.18	Cadinol <alpha->
78	15.678	1089265	0.09	Cadalene
79	15.913	817661	0.07	Pentadecanal
80	16.415	1942989	0.16	Eremophilone
81	17.213	723496	0.06	Neophytadiene
82	17.291	2708840	0.23	Phytone
83	19.624	525501	0.04	Abietatriene
		1196213241	100.00	

Kosmetiniai alergenai: *-silpnas, **-vidutinio stiprumo, ***- stiprus alergenai

Analiz atliko

dr. Jurga B dien