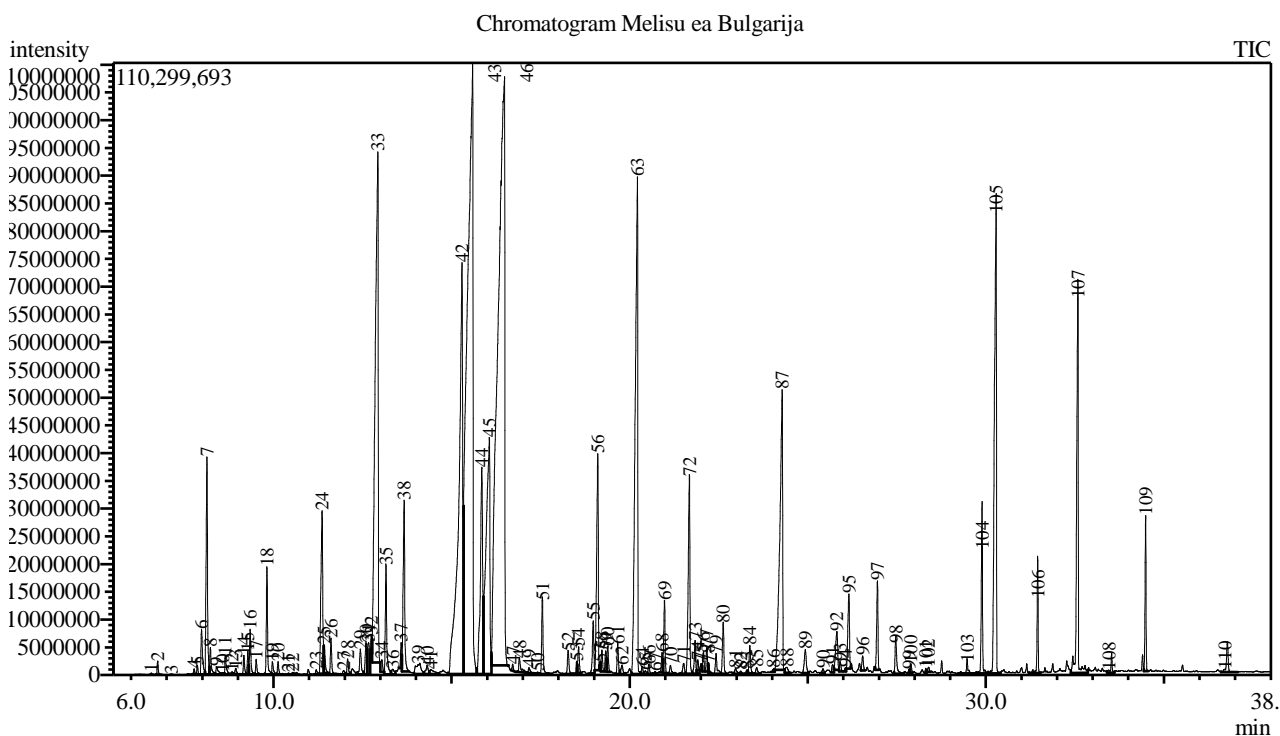


Analysis numb.: GC638  
 Analysis date: 2019 01 08  
 Sample name: Melis ea  
 Botanical name: Melisa officinalis  
 Sample batch num: MODSSTEO0118  
 Sample origin: Bulgarija  
 Best before:



Peak Report TIC

Peak#	R.Time	Area	Area%	Name
1	6.569	645333	0.01	Thujene <alpha->
2	6.748	4950078	0.07	Pinene <alpha->
3	7.131	130847	0.00	Camphene
4	7.769	2091697	0.03	Sabinene
5	7.862	3365479	0.05	Pinene <beta->
6	7.978	24491142	0.34	1-Octen-3-ol
7	8.131	107400762	1.50	Hept-5-en-2-one <6-methyl->
8	8.226	13980110	0.20	Myrcene
9	8.395	6250950	0.09	3-Octanol
10	8.570	1141573	0.02	Octanal
11	8.644	10035736	0.14	Hex-(3Z)-enyl acetate
12	8.836	1502590	0.02	Hexyl acetate
13	8.938	3826971	0.05	Terpinene <alpha->
14	9.167	8187419	0.11	Cymene <para->
15	9.280	9487166	0.13	Limonene*
16	9.344	21914092	0.31	Eucalyptol
17	9.512	7202133	0.10	Ocimene <cis-, beta->
18	9.815	46786842	0.65	Ocimene <trans-, beta->
19	9.970	6480826	0.09	Bergamal
20	10.129	5922186	0.08	Terpinene <gamma->
21	10.420	685716	0.01	Sabinene hydrate <cis->
22	10.540	1547191	0.02	Linalool oxide <cis->
23	11.200	2614236	0.04	Unknown
24	11.363	104302787	1.46	Linalool*

Peak#	R.Time	Area	Area%	Name
25	11.416	13589383	0.19	Nonanal
26	11.614	16242802	0.23	Rose oxide<cis->
27	11.968	2828670	0.04	Fenchyl alcohol
28	12.082	7581398	0.11	Rose oxide <trans->
29	12.440	16081847	0.23	Unknown
30	12.602	20717374	0.29	Isocitral <exo->
31	12.669	23211530	0.32	Cmaphene hydrate + Isopulegol
32	12.750	7170849	0.10	Chrysanthemol <trans->
33	12.929	537040650	7.52	Citronellal
34	13.038	8065872	0.11	Isopulegol <iso->
35	13.161	54884381	0.77	Isocitral <(Z)->
36	13.352	5128682	0.07	Linalool oxide <trans-> (pyranoid)
37	13.584	10609358	0.15	Terpinen-4-ol
38	13.667	95545504	1.34	Isocitral <(E)->
39	14.068	19485026	0.27	Terpineol <alpha-> + Methyl salicylate
40	14.318	7288566	0.10	Carvone <(Z)-, dihydro->
41	14.421	7771314	0.11	Unknown
42	15.292	580870099	8.13	Citronellol*
43	15.585	1200386568	16.80	Neral
44	15.851	170203615	2.38	Citronellate <methyl->
45	16.061	316954606	4.44	Geraniol*
46	16.485	1395878838	19.54	Geranial
47	16.720	2763988	0.04	Anethole <(E)->
48	16.908	10500748	0.15	Thymol
49	17.178	3668986	0.05	Carvacrol
50	17.422	661680	0.01	Theaspirane
51	17.553	38129901	0.53	Geranic acid <methyl-> ester
52	18.277	12853090	0.18	Citronellyl acetate
53	18.511	4564420	0.06	Eugenol**
54	18.566	12749640	0.18	Neryl acetate
55	18.975	25712304	0.36	Copaene <alpha->
56	19.105	121622003	1.70	Geranyl acetate
57	19.178	812953	0.01	Damascenone <(E)-, beta->
58	19.221	10377830	0.15	Bourbonene <beta->
59	19.327	9894291	0.14	Cubebene <beta->
60	19.382	12236230	0.17	Elemene <beta->
61	19.669	14539557	0.20	Methyleugenol
62	19.788	6676730	0.09	Caryophyllene <(Z)->
63	20.216	429552954	6.01	Caryophyllene <(E)->
64	20.357	4032942	0.06	Copaene <beta->
65	20.442	1905150	0.03	Bergamotene <alpha-, trans->
66	20.544	5054882	0.07	Guaiene <alpha->
67	20.720	1570292	0.02	Isogermacrene D
68	20.910	9255538	0.13	Farnesene <(E)-, beta->
69	20.978	33976562	0.48	Humulene <alpha->
70	21.149	6024302	0.08	Alloaromadendrene
71	21.519	7133749	0.10	Muurolene <gamma->
72	21.678	115221265	1.61	Germacrene D
73	21.841	17337422	0.24	Selinene <beta-> + Unknown
74	21.918	7202430	0.10	Pentadecane
75	22.006	3059020	0.04	Bicyclogermacrene
76	22.072	9278802	0.13	Muurolene <alpha->
77	22.166	11464325	0.16	Farnesene <(E,E)-, alpha->
78	22.209	3341504	0.05	Bulnesene <alpha->
79	22.430	12201453	0.17	Cadinene <gamma->
80	22.630	25824629	0.36	Cadinene <delta->
81	22.979	4342789	0.06	Cadinene <alpha->
82	23.122	1735241	0.02	Calacorene <alpha->
83	23.295	2114315	0.03	Elemol <alpha->
84	23.374	15167253	0.21	Unknown
85	23.570	4534342	0.06	Nerolidol <(E)->
86	24.041	1745633	0.02	Germacrene D-4-ol
87	24.281	272855236	3.82	Caryophyllene oxide
88	24.416	5673639	0.08	Fokienol
89	24.932	16795026	0.24	Humulene epoxide II
90	25.429	2681006	0.04	Diepicubenol <1,10->
91	25.700	4525766	0.06	Caryophylla-4(12),8(13)-dien-5-alpha-ol
92	25.817	27560111	0.39	T-Muurolol
93	25.912	4801572	0.07	Muurolol <alpha->

Peak#	R.Time	Area	Area%	Name
94	26.061	1551197	0.02	Eudesmol <beta->
95	26.156	41046133	0.57	Cadinol <alpha->
96	26.541	7359872	0.10	Unknown
97	26.956	39814758	0.56	Heptadecane
98	27.482	21516271	0.30	Farnesol <(2Z,6Z)->**
99	27.848	1473996	0.02	Farnesal <(2E,6E)->
100	27.896	4099764	0.06	Unknown
101	28.316	1862325	0.03	Benzyl benzoate*
102	28.392	2511739	0.04	Unknown
103	29.483	8752296	0.12	Phytone
104	29.903	73749810	1.03	1-Nonadecene
105	30.284	329560858	4.61	Nonadecane
106	31.466	42485388	0.59	Eicosane
107	32.590	218213126	3.05	Heneicosane
108	33.455	9303244	0.13	1-Docosene
109	34.487	53472524	0.75	Docosane
110	36.717	19804047	0.28	Tricosane
		7144791643	100.00	

Kosmetiniai alergenai: \*-silpnas, \*\*-vidutinio stiprumo, \*\*\*- stiprus alergenai

Analiz atliko

dr. Jurga B dien