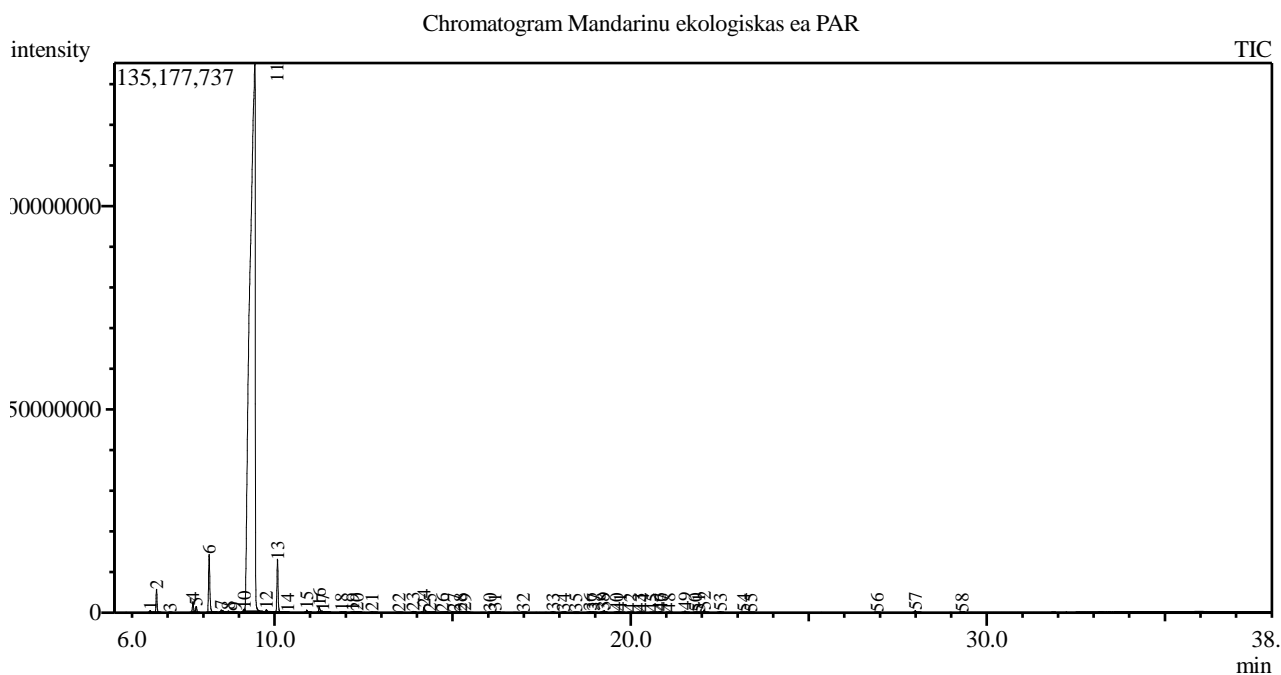


Analysis numb.: GC850
 Analysis date: 2020 02 05
 Sample name: Mandarin ekologiškas ea
 Botanical name: Citrus reticulata
 Sample batch num: MANO1018SO
 Sample origin: PAR
 Best before: 2020 10

Oksiduot ir neb ding jungini nerasta. Galiojimas gali b ti t siamas iki 2020 12



Peak Report TIC

Peak#	R.Time	Area	Area%	Name
1	6.509	1163899	0.08	Thujene <alpha->
2	6.687	11882320	0.78	Pinene <alpha->
3	7.072	65539	0.00	Camphene
4	7.708	6128560	0.40	Sabinene
5	7.800	3542469	0.23	Pinene <beta->
6	8.164	37034822	2.43	Myrcene
7	8.503	3058550	0.20	Octanal
8	8.708	1218573	0.08	Carene <delta-3->
9	8.905	436776	0.03	Terpinene <alpha->
10	9.157	1767940	0.12	Cymene <para->
11	9.452	1398186409	91.83	Limonene*
12	9.774	1505963	0.10	Ocimene <trans-, beta->
13	10.085	29736982	1.95	Terpinene <gamma->
14	10.370	70232	0.00	Sabinene hydrate <cis->
15	10.908	1484074	0.10	Terpinolene
16	11.254	3876251	0.25	Linalool*
17	11.357	994149	0.07	Nonanal
18	11.883	357373	0.02	Mentha-2,8-dien-1-ol <trans-, para->
19	12.196	421770	0.03	Limonene oxide <cis->
20	12.318	676434	0.04	Limonene oxide <trans->
21	12.738	483310	0.03	Citronellal
22	13.491	261407	0.02	Linalool oxide <cis-> (pyranoid)
23	13.889	983452	0.06	Terpineol <alpha->
24	14.195	3807724	0.25	Decanal <n->

Peak#	R.Time	Area	Area%	Name
25	14.363	320607	0.02	Acetate <octyl->
26	14.713	303547	0.02	Carveol <trans->
27	15.043	135534	0.01	Carveol <cis->
28	15.230	97066	0.01	Neral
29	15.340	442315	0.03	Carvone
30	16.055	227967	0.01	Geranial
31	16.187	475338	0.03	Perillaldehyde
32	16.990	132835	0.01	Undecanal
33	17.819	331509	0.02	Elemene <delta->
34	18.112	98641	0.01	Terpinyl acetate <alpha->
35	18.454	217477	0.01	Neryl acetate
36	18.856	585202	0.04	Copaene <alpha->
37	18.951	293649	0.02	Geranyl acetate
38	19.208	321007	0.02	Cubebene <beta->
39	19.256	1211178	0.08	Elemene <beta->
40	19.610	725651	0.05	Dodecanal <n->
41	19.712	442481	0.03	
42	19.997	276960	0.02	Caryophyllene <(E)->
43	20.233	209034	0.01	Copaene <beta->
44	20.337	111883	0.01	Berganotene <trans-, beta->
45	20.616	198440	0.01	Dodeca-(2E,6Z)-dienal
46	20.803	335490	0.02	Farnesene <(E)-, beta->
47	20.857	232330	0.02	Humulene <alpha->
48	21.075	203543	0.01	2-Tridecenal, (E)-
49	21.529	1031088	0.07	Germacrene D
50	21.818	64120	0.00	Selinene <beta->
51	21.904	184922	0.01	Bicyclgermacrene
52	22.065	1687370	0.11	Farnesene <(E,E)-, alpha->
53	22.515	580026	0.04	Cadinene <delta->
54	23.170	216555	0.01	Elemol <alpha->
55	23.375	132286	0.01	Germacrene B
56	26.915	159195	0.01	Sinensal <beta->
57	27.995	1261543	0.08	Sinensal <alpha->
58	29.301	112020	0.01	Neophytadiene
		1522503787	100.00	

Kosmetiniai alergenai: *-silpnas, **-vidutinio stiprumo, ***- stiprus alergenai

Analiz atliko

dr. Jurga B dien