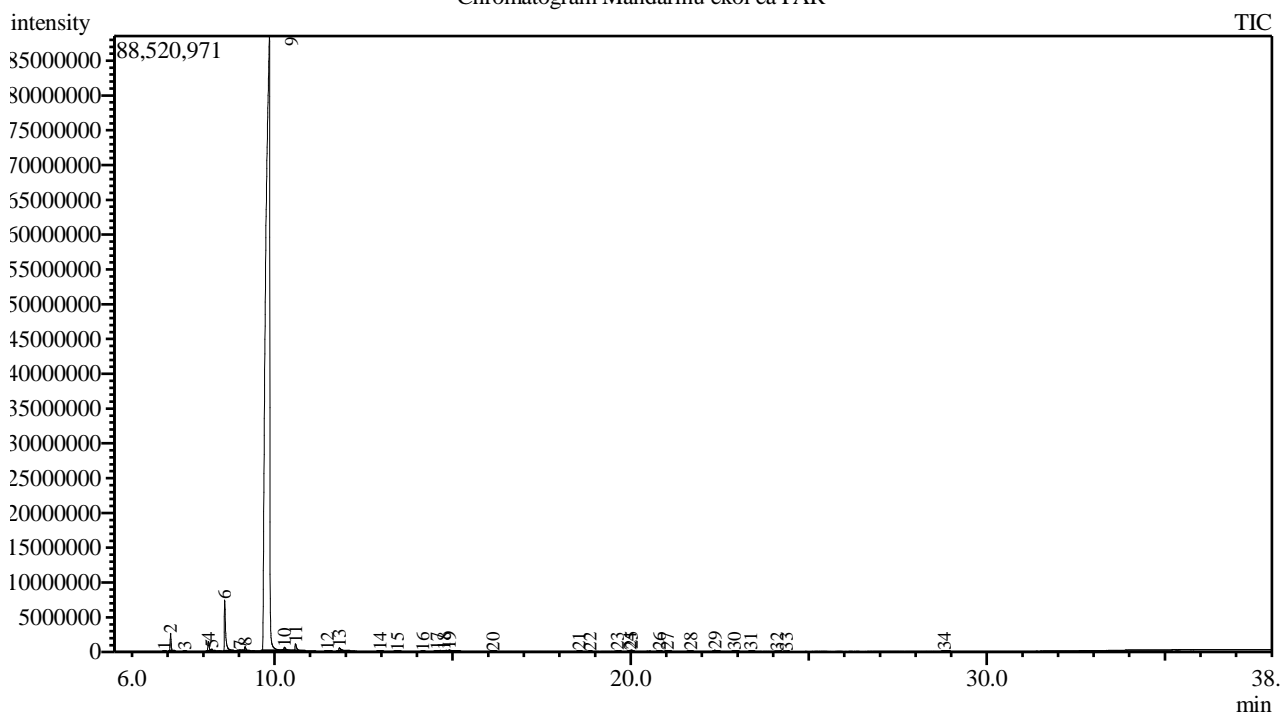


Analysis numb.: GC1220
 Analysis date: 2021 11 24
 Sample name: Mandarinū ekol ea
 Botanical name: Citrus reticulata
 Sample batch num: MANO0921SO
 Sample origin: PAR
 Best before: 2023 09

Chromatogram Mandarinū ekol ea PAR



Peak Report TIC

Peak#	R.Time	Area	Area%	Name
1	6.910	94847	0.01	Thujene <alpha->
2	7.082	5120623	0.69	Pinene <alpha->
3	7.486	20340	0.00	Camphene
4	8.143	3439573	0.46	Sabinene
5	8.239	772181	0.10	Pinene <beta->
6	8.600	19239178	2.59	Myrcene
7	9.025	378144	0.05	Phellandrene <alpha->
8	9.173	1674827	0.23	Carene <delta-3->
9	9.856	697146382	93.96	Limonene*
10	10.280	1835911	0.25	Ocimene <trans-, beta->
11	10.591	3259356	0.44	Terpinene <gamma->
12	11.478	316039	0.04	Terpinolene
13	11.824	2610011	0.35	Linalool*
14	12.966	125903	0.02	Mentha-2,8-dien-1-ol <trans-, para->
15	13.451	86405	0.01	Citronellal
16	14.156	53231	0.01	Terpinen-4-ol
17	14.560	455019	0.06	Terpineol <alpha->
18	14.763	135357	0.02	Unknown
19	14.906	1383720	0.19	Decanal
20	16.135	172525	0.02	Carvone
21	18.553	284129	0.04	Elemene <delta->
22	18.863	55779	0.01	Terpinyl acetate <alpha->
23	19.621	257872	0.03	Copaene <alpha->
24	19.987	120922	0.02	Cubebene <beta->

Peak#	R.Time	Area	Area%	Name
25	20.024	513398	0.07	Elemene <beta->
26	20.798	109512	0.01	Caryophyllene
27	21.036	199438	0.03	Copaene <beta->
28	21.681	114798	0.02	Humulene <alpha->
29	22.367	626788	0.08	Germacrene D
30	22.911	274721	0.04	Farnesene <(E,E)-, alpha->
31	23.374	279223	0.04	Cadinene <delta->
32	24.113	153411	0.02	Elemol <alpha->
33	24.366	69119	0.01	Germacrene B
34	28.811	549022	0.07	Sinensal <alpha->
		741927704	100.00	

Kosmetiniai alergenai: *-silpnas, **-vidutinio stiprumo, ***- stiprus alergenai

Analiz atliko

dr. Jurga B dien