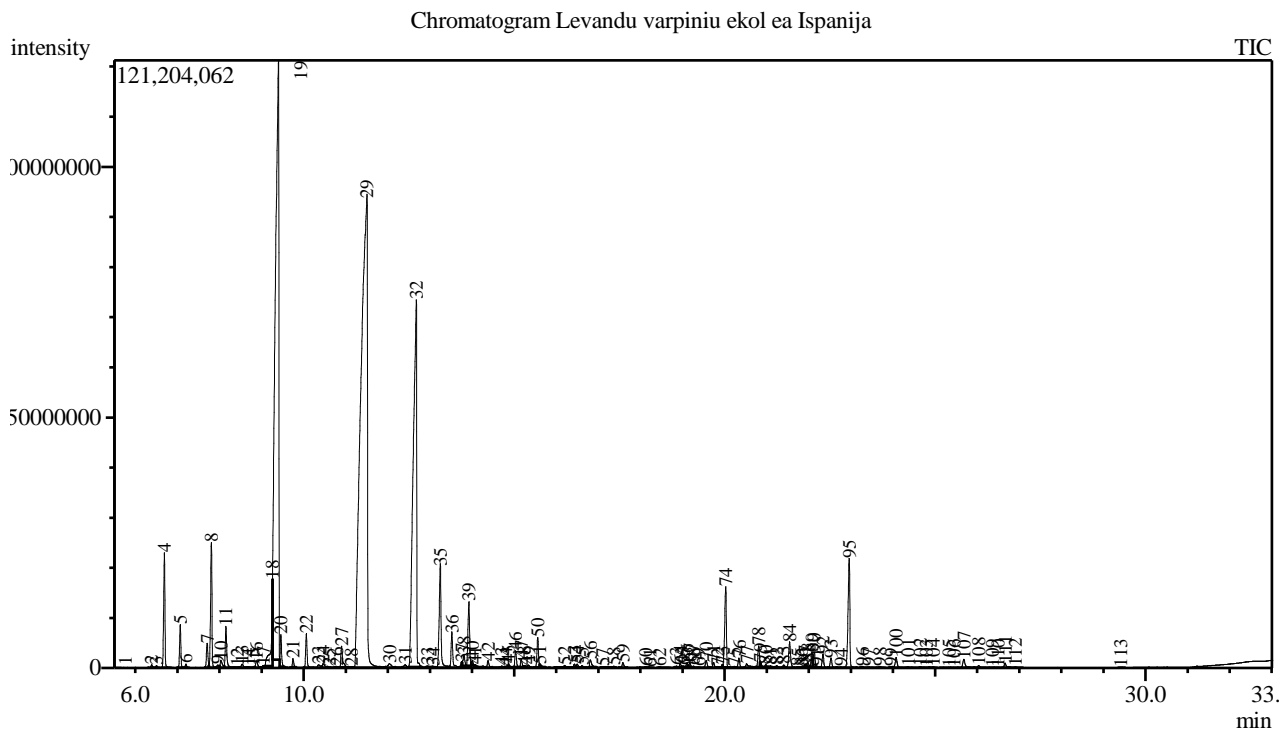


Analysis numb.: GC830
 Analysis date: 2020 01 20
 Sample name: Levand varpini ekologiškās ea
 Botanical name: Lavandula latifolia Medik
 Sample batch num: LOT 2483
 Sample origin: Ispanija
 Best before: 2022 10



Peak Report TIC

Peak#	R.Time	Area	Area%	Name
1	5.242	1333759	0.05	Hexanol
2	6.388	1121497	0.04	Tricyclene
3	6.503	931221	0.03	Thujene <alpha->
4	6.691	48644288	1.73	Pinene <alpha->
5	7.067	17707968	0.63	Camphene
6	7.202	1455264	0.05	Thuja-2,4(10)-diene
7	7.707	11709418	0.42	Sabinene
8	7.807	55666105	1.98	Pinene <beta->
9	7.957	1784409	0.06	1-Octen-3-ol
10	8.033	4749291	0.17	3-Octanone
11	8.152	20482575	0.73	Myrcene
12	8.422	569968	0.02	Octanol <3->
13	8.540	2552087	0.09	Phellandrene <alpha->
14	8.693	494755	0.02	Carene <delta-3->
15	8.793	421581	0.01	Hexyl acetate
16	8.880	4430754	0.16	Terpinene <alpha->
17	9.038	1269051	0.05	Unknown
18	9.260	34879156	1.24	Cymene <para-> + Limonene*
19	9.402	697041573	24.79	Eucalyptol
20	9.458	13756975	0.49	Ocimene <cis-, beta->
21	9.744	3848641	0.14	Ocimene <trans-, beta->
22	10.065	15510926	0.55	Terpinene <gamma->
23	10.355	2394154	0.09	Sabinene hydrate <cis->
24	10.463	3208347	0.11	Linalool oxide <cis->

Peak#	R.Time	Area	Area%	Name
25	10.617	819873	0.03	Octanol <n->
26	10.779	1005505	0.04	Camphenilone
27	10.900	12688936	0.45	Terpinolene+ Linalool oxide <trans-> + Cym
28	11.130	141358	0.01	Camphenone <6->
29	11.499	1007539561	35.84	Linalool*
30	12.041	5004857	0.18	Campholenal <alpha->
31	12.414	2645728	0.09	Nopinone
32	12.676	418491016	14.89	Camphor
33	12.947	804544	0.03	Sabina ketone
34	13.074	477121	0.02	Pinocarvone
35	13.249	64358034	2.29	Borneol
36	13.526	19885861	0.71	Terpinen-4-ol
37	13.760	1650631	0.06	Cryptone
38	13.810	6192523	0.22	Butyrate <hexyl->
39	13.926	34352801	1.22	Terpineol <alpha->
40	14.006	2309526	0.08	Myrtenal
41	14.075	1230632	0.04	Myrtenol
42	14.385	4149638	0.15	Verbenone
43	14.709	1265935	0.05	Carveol <trans->
44	14.800	203854	0.01	2-Hydroxycineol
45	14.869	1300916	0.05	Isobornyl formate
46	15.035	8293298	0.29	Hexyl 2-methyl butanoate
47	15.169	3933479	0.14	Hexyl isovalerate
48	15.244	521853	0.02	Cumin aldehyde
49	15.343	1989519	0.07	Carvone
50	15.561	15082522	0.54	Linalyl acetate
51	15.613	1312475	0.05	Geraniol*
52	16.204	1887287	0.07	Phellandral
53	16.432	1705021	0.06	Bornyl acetate
54	16.498	1604666	0.06	Lavandulyl acetate
55	16.619	1464124	0.05	2-Undecanone
56	16.809	4899378	0.17	Thymol
57	17.103	371978	0.01	Carvacrol
58	17.367	748106	0.03	Tridecanal
59	17.589	3310308	0.12	Tiglate <hexyl->
60	18.129	914783	0.03	Terpinyl acetate <alpha->
61	18.223	188607	0.01	Cubebene <alpha->
62	18.459	1121797	0.04	Neryl acetate
63	18.860	613259	0.02	Copaene <alpha->
64	18.947	1784490	0.06	Geranyl cetate + Daucene
65	19.028	508659	0.02	Hexyl hexanoate + Cubebene <beta->
66	19.109	2071070	0.07	Bourbonene <beta->
67	19.174	2237196	0.08	Sesquithujene <7-epi->
68	19.265	749222	0.03	Elemene <beta->
69	19.384	536975	0.02	Sativene
70	19.569	4310732	0.15	Methyl eugenol + Sesquithujene
71	19.743	2955325	0.11	Gurjunene <alpha->
72	19.837	716901	0.03	Cedrene <alpha->
73	19.942	933852	0.03	Lavandulyl isobutyrate
74	20.026	44868207	1.60	Caryophyllene <(E)->
75	20.236	1203827	0.04	Copaene <beta->
76	20.345	5140297	0.18	Bergamotene <alpha-, trans->
77	20.531	4879216	0.17	Coumarin*+ Unknown
78	20.811	10965435	0.39	Farnesene <(E)-, beta->
79	20.850	1930981	0.07	Humulene <alpha->
80	20.978	1439643	0.05	Neryl propanoate
81	21.090	599267	0.02	Muurola-4(14),5-diene <cis->
82	21.241	849274	0.03	Dauca-5,8-diene
83	21.407	1264987	0.04	Muurolene <gamma->
84	21.551	15882388	0.56	Germacrene D
85	21.741	207062	0.01	Zingiberene <alpha->
86	21.821	404607	0.01	Cadina-1,4-diene <cis->
87	21.916	1378778	0.05	Bicyclgermacrene + Unknown
88	21.979	2206380	0.08	Muurolene <alpha->
89	22.074	7225478	0.26	Lavandulyl isovalerate
90	22.130	7754792	0.28	Bisabolene <beta->
91	22.201	279473	0.01	Curcumene <beta->
92	22.342	7545332	0.27	Cadinene <gamma->
93	22.533	5652507	0.20	Cadinene <delta->

Peak#	R.Time	Area	Area%	Name
94	22.770	512689	0.02	Unknown
95	22.964	64622998	2.30	Bisabolene <(E)-, alpha->
96	23.276	1011576	0.04	Unknown
97	23.437	522452	0.02	Nerolidol <(E)->
98	23.693	962986	0.03	Neryl isovalerate
99	23.951	283943	0.01	Spathulenol
100	24.076	6411732	0.23	Caryophyllene oxide
101	24.362	633549	0.02	Viridiflorol
102	24.656	761323	0.03	Ledol
103	24.797	350323	0.01	Humulene epoxide II
104	24.959	717947	0.03	Diepicubenol <1,10->
105	25.327	239738	0.01	Diepicubenol
106	25.450	151673	0.01	Eudesmol <gamma->
107	25.690	6929248	0.25	T-Muurolol + Muurolol <alpha->
108	26.041	1959234	0.07	Cadinol <alpha->
109	26.365	246736	0.01	Bisabolol <epi-, beta->
110	26.498	268386	0.01	Cadalene
111	26.668	2888253	0.10	Bisabolol <alpha->
112	26.912	892836	0.03	Shyobunol
113	29.411	159382	0.01	Phytone
		2811454430	100.00	

Kosmetiniai alergenai: *-silpnas, **-vidutinio stiprumo, ***- stiprus alergenai

Analiz atliko

dr. Jurga B dien