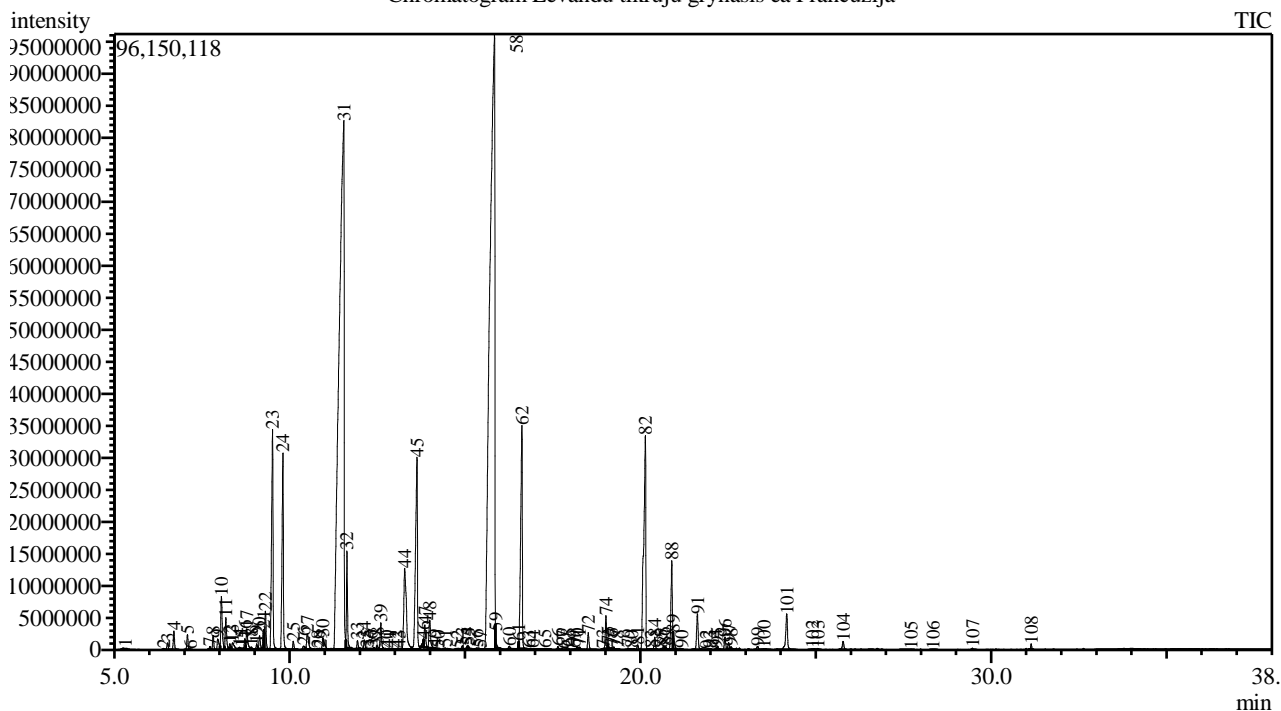


Analysis numb.: GC92  
 Analysis date: 2020 05 20  
 Sample name: Levand tikr j A.O.P. grynasis ea  
 Botanical name: Lavandula angustifolia  
 Sample batch num: LOT 0025086  
 Sample origin: Pranc zija  
 Best before: 2021 05

Chromatogram Levandu tikruju grynasis ea Prancuzija



Peak Report TIC

Peak#	R.Time	Area	Area%	Name
1	5.253	737104	0.03	1-Hexanol
2	6.406	508938	0.02	Tricyclene
3	6.519	2595688	0.09	Thujene <alpha->
4	6.700	6986260	0.25	Pinene <alpha->
5	7.086	5404319	0.20	Camphene
6	7.163	83500	0.00	Isobutyrate <butyl->
7	7.726	1240351	0.05	Sabinene
8	7.819	5310445	0.19	Pinene <beta->
9	7.951	6162712	0.22	1-Octen-3-ol
10	8.054	23874313	0.87	Octan-3-one
11	8.181	13240661	0.48	Myrcene
12	8.292	2657995	0.10	Butanoate <butyl->
13	8.373	5348420	0.20	Hexanol <ethyl->
14	8.573	1136133	0.04	Phellandrene <alpha->
15	8.635	609097	0.02	Linalool oxide <dehydro-, cis->
16	8.723	4003995	0.15	Carene <delta-3->
17	8.774	10097505	0.37	Hexyl acetate
18	8.908	1338874	0.05	Terpinene <alpha->
19	9.061	2269754	0.08	Cymene <orta->
20	9.142	5999650	0.22	Cymene <para->
21	9.256	8026592	0.29	Limonene*
22	9.309	16107372	0.59	Eucalyptol
23	9.513	97133421	3.54	Ocimene <cis-, beta->
24	9.808	82174864	3.00	Ocimene <trans-, beta->

Peak#	R.Time	Area	Area%	Name
25	10.102	2956535	0.11	Terpinene <gamma->
26	10.400	2086562	0.08	Sabinene hydrate <cis->
27	10.505	10008046	0.37	Linalool oxide <cis->
28	10.813	304800	0.01	Cymenene <meta->
29	10.871	234225	0.01	Terpinolene
30	10.948	8285744	0.30	Linalool oxide <trans->
31	11.544	809595753	29.53	Linalool*
32	11.634	30689184	1.12	Octene <3-acetoxy->
33	11.936	2963096	0.11	Acetate <3-octyl->
34	12.130	3384613	0.12	Alloocimene
35	12.208	324203	0.01	Myroxide <(Z)->
36	12.327	70142	0.00	Linalool <dihydro->
37	12.406	548197	0.02	Nopinone
38	12.496	1237834	0.05	Pinocarveol <trans->
39	12.602	11332193	0.41	Camphor
40	12.767	422553	0.02	Camphene hydrate
41	12.853	378112	0.01	Nerol oxide
42	13.035	475392	0.02	Borneol
43	13.116	582153	0.02	Mentha-1,5dien-8-ol <para->
44	13.281	64728203	2.36	Lavandulol
45	13.631	111332229	4.06	Terpinen-4-ol
46	13.820	2923465	0.11	Cryptone + Cymen-8-ol <para->
47	13.853	10124294	0.37	Butyrate <hexyl->
48	13.994	14076751	0.51	Terpineol <alpha->
49	14.140	131717	0.00	Octenol acetate <(2Z)->
50	14.233	78172	0.00	Pelargol
51	14.436	648598	0.02	Verbenone
52	14.783	154201	0.01	Isophorone <4-methylene->
53	14.926	1620385	0.06	Isobornyl formate
54	15.073	873276	0.03	Nerol
55	15.092	1368762	0.05	Hexyl isovalerate
56	15.333	1056846	0.04	Cuminaldehyde
57	15.438	667081	0.02	Carvone
58	15.839	937813241	34.21	Linalyl acetate
59	15.870	3646324	0.13	Geraniol
60	16.268	1789937	0.07	Unknown
61	16.530	2055902	0.07	Bornyl acetate
62	16.622	113378920	4.14	Lavandulyl acetate
63	16.813	483972	0.02	Cumin alcohol
64	16.920	439601	0.02	Geranyl formate
65	17.270	647257	0.02	Unknown
66	17.654	1309948	0.05	Tiglate <hexyl->
67	17.800	106659	0.00	Linalyl propionate
68	17.919	1282089	0.05	Unknown
69	18.110	204608	0.01	Benzyl butyrate
70	18.195	1152470	0.04	Unknown
71	18.269	1252716	0.05	Unknown
72	18.519	7243801	0.26	Neryl acetate
73	18.936	504167	0.02	Copaene <alpha->
74	19.018	13022918	0.48	Geranyl acetate
75	19.077	1276729	0.05	Hexyl hexanoate
76	19.180	309021	0.01	Bourbonene <beta->
77	19.244	898078	0.03	Sesquithujene <7-epi->
78	19.347	310256	0.01	Elemene <beta->
79	19.654	671445	0.02	Funebrene <alpha->
80	19.753	353080	0.01	Caryophyllene <(Z)->
81	19.929	2030785	0.07	Bergamotene <alpha-, cis->
82	20.143	137413756	5.01	Caryophyllene <(E)->
83	20.316	121763	0.00	Copaene <beta->
84	20.411	5085601	0.19	Bergamotene <alpha-, trans->
85	20.588	399101	0.01	Farnesene <(Z)-, beta->
86	20.665	1318023	0.05	Unknown
87	20.729	1024596	0.04	Santalene <epi-, beta->
88	20.895	37977955	1.39	Farnesene <(E)-, beta->
89	20.930	5616719	0.20	Humulene <alpha->
90	21.174	272758	0.01	Cadina-1(6),4-diene <cis->
91	21.629	16780530	0.61	Germacrene D
92	21.880	494578	0.02	Zingiberene <alpha->
93	21.984	356266	0.01	Bicyclgermacrene

Peak#	R.Time	Area	Area%	Name
94	22.156	497044	0.02	Farnesene <(E,E)-, alpha->
95	22.201	1285192	0.05	Bisabolene <beta->
96	22.417	5540359	0.20	Cadinene <gamma->
97	22.515	2570101	0.09	Teresantalol
98	22.584	1392062	0.05	Unknown
99	23.347	1864226	0.07	Caryophyllene oxide
100	23.520	1131932	0.04	Nerolidol <(E)->
101	24.176	21290554	0.78	Caryophyllene oxide
102	24.904	546686	0.02	Humulene epoxide II
103	25.060	703432	0.03	Diepicubenol <1,10->
104	25.780	3885151	0.14	T-Muurolol + Muurolol <alpha->
105	27.716	378156	0.01	Sesquilandulyl acetate <(E)->
106	28.336	248676	0.01	Benzyl benzoate*
107	29.467	489793	0.02	Phytone
108	31.147	1721750	0.06	Unknown
		2741301964	100.00	

Kosmetiniai alergenai: \*-silpnas, \*\*-vidutinio stiprumo, \*\*\*- stiprus alergenai

Analiz atliko

dr. Jurga B dien