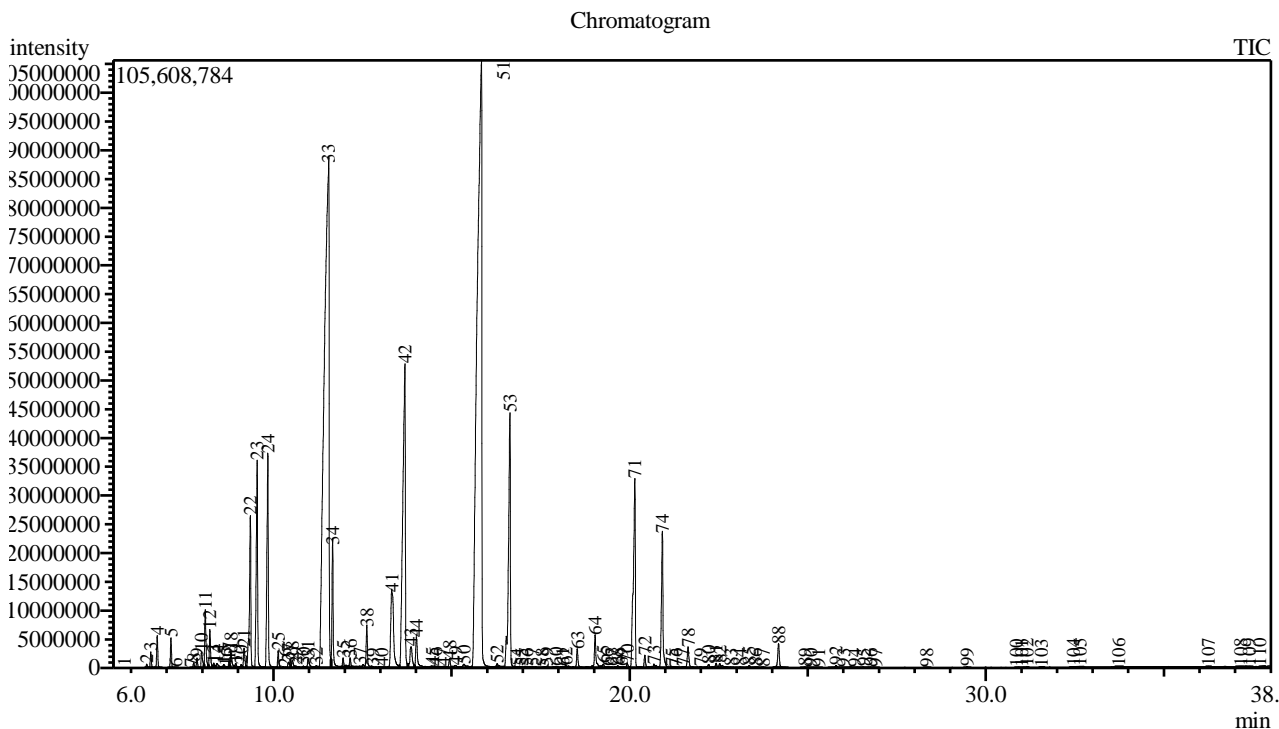


Analysis numb.: GC817  
 Analysis date: 2019 12 16  
 Sample name: Levand laukini 1400 grynasis ea  
 Botanical name: Lavandula angustifolia  
 Sample batch num: LAV1400AK  
 Sample origin: Pranc zija  
 Best before:



Peak Report TIC

Peak#	R.Time	Area	Area%	Name
1	5.414	152599	0.00	(2-Methylpropylidene)cyclopentane
2	6.439	1280324	0.04	Tricyclene
3	6.553	5690007	0.18	Thujene <alpha->
4	6.734	11472292	0.37	Pinene <alpha->
5	7.119	10747288	0.35	Camphene
6	7.257	122101	0.00	Thuja-2,4(10)-diene
7	7.758	1866500	0.06	Sabinene
8	7.850	3729438	0.12	Pinene <beta->
9	7.976	8144811	0.26	1-Octen-3-ol
10	8.083	25249539	0.82	Octan-3-one
11	8.211	16140627	0.52	Myrcene
12	8.319	2441867	0.08	Butanoate <butyl->
13	8.408	3774147	0.12	Hexanol <ethyl->
14	8.601	1733175	0.06	Phellandrene <alpha->
15	8.663	351602	0.01	Linalool oxide <dehydroxy-, cis->
16	8.752	2682336	0.09	Carene <delta-3->
17	8.802	8421423	0.27	Hexyl acetate
18	8.938	2442505	0.08	Terpinene <alpha->
19	9.092	1628379	0.05	Cymene <orta->
20	9.172	9397797	0.30	Cymene <para->
21	9.300	7979276	0.26	Limonene*
22	9.349	64195956	2.07	Eucalyptol
23	9.541	98774192	3.19	Ocimene <cis-, beta->
24	9.841	102382504	3.31	Ocimene <trans-, beta->

Peak#	R.Time	Area	Area%	Name
25	10.132	7066404	0.23	Terpinene <gamma->
26	10.425	3746814	0.12	Sabinene hydrate <cis->
27	10.528	4483768	0.14	Linalool oxide <cis->
28	10.633	1106814	0.04	Unknown
29	10.840	1678330	0.05	Camphenilone
30	10.973	6317731	0.20	Terpineol <alpha->
31	11.202	1627091	0.05	Unknown
32	11.547	831050832	26.84	Linalool*
33	11.659	49887179	1.61	Octene <3-acetoxy->
34	11.952	3491615	0.11	Acetate <3-octyl->
35	12.031	566398	0.02	Menth-2-en-1-ol <cis-, para->
36	12.149	3360145	0.11	Alloocimene
37	12.225	427243	0.01	Epoxy-ocimene <(Z)->
38	12.425	529570	0.02	Nopinone
39	12.518	1422261	0.05	Epoxy-ocimene <(E)->
40	12.619	17354575	0.56	Camphor
41	12.780	468648	0.02	Camphene hydrate
42	12.870	211905	0.01	Nerol oxide
43	13.325	75855732	2.45	Borneol
44	13.689	257114322	8.31	Terpinen-4-ol
45	13.863	17668113	0.57	Cryptone + Unknown
46	14.012	15029812	0.49	Terpineol <alpha->
47	14.944	3655954	0.12	Isobornyl formate
48	15.108	1350060	0.04	Hexyl 2-methyl butanoate + Neral
49	15.350	4511987	0.15	Cuminaldehyde + Carvone
50	15.839	950643685	30.71	Linalyl acetate
51	16.279	1627345	0.05	Unknown
52	16.537	12774605	0.41	Bornyl acetate
53	16.638	146340405	4.73	Lavandulyl acetate
54	16.840	1393871	0.05	Cymen-7-ol <para->
55	17.671	1615259	0.05	Tiglate <hexyl->
56	17.935	1492016	0.05	Unknown
57	18.124	983292	0.03	Benzyl butyrate
58	18.533	9886909	0.32	Neryl acetate
59	18.952	692871	0.02	Copaene <alpha->
60	19.030	15159399	0.49	Geranyl acetate
61	19.194	270587	0.01	Bourbonene <beta->
62	19.260	1507798	0.05	Sesquithujene <7-epi->
63	19.360	466336	0.02	Elemene <beta->
64	19.667	1233114	0.04	Sesquithujene
65	19.769	569651	0.02	Caryophyllene <(Z)->
66	19.938	2395882	0.08	Bergamotene <alpha-, cis->
67	20.146	127735405	4.13	Caryophyllene <(E)->
68	20.430	6416513	0.21	Bergamotene <alpha-, trans->
69	20.605	422155	0.01	Farnesene <(E)-, beta->
70	20.681	1247900	0.04	Farnesene <(E)-, beta->
71	20.740	834700	0.03	Santalene <epi-, beta->
72	20.917	71260806	2.30	Farnesene <(E)-, beta->
73	21.643	11850976	0.38	Germacrene D
74	21.892	134322	0.00	Zingiberene <alpha->
75	21.991	406863	0.01	Bicyclogermacrene
76	22.158	344387	0.01	Farnesene <(E,E)-, alpha->
77	22.218	1333903	0.04	Bisabolene <beta->
78	22.291	56344	0.00	Curcumene <beta->
79	22.431	2355829	0.08	Cadinene <gamma->
80	22.528	1654952	0.05	Teresantalol
81	22.600	1309966	0.04	Sesquiphellandrene <beta->
82	23.358	1390887	0.04	Unknown
83	23.535	819604	0.03	Nerolidol <(E)->
84	24.185	13691533	0.44	Caryophyllene oxide
85	24.924	417543	0.01	Humulene epoxide II
86	25.076	231962	0.01	Diepicubenol <1,10->
87	25.800	1437100	0.05	Muurolol <alpha->
88	28.346	271847	0.01	Benzyl benzoate*
89	29.479	391111	0.01	Phytone
		3095853621	100.00	

Kosmetiniai alergenai: \*-silpnas, \*\*-vidutinio stiprumo, \*\*\*- stiprus alergenai

