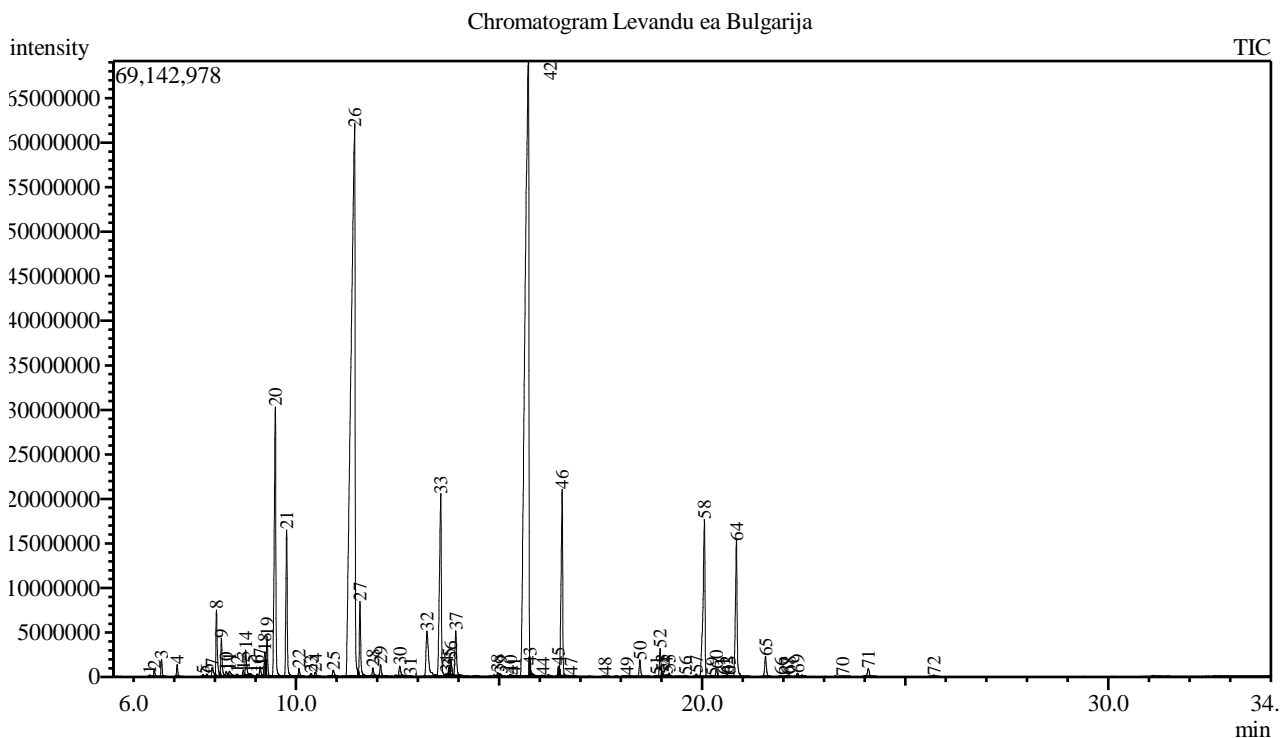


Analysis numb.: GC955
 Analysis date: 2020 08 19
 Sample name: Levandu ea
 Botanical name: Lavandula angustifolia
 Sample batch num: LADSBLEO0120
 Sample origin: Bulgarija
 Best before:



Peak Report TIC

Peak#	R.Time	Area	Area%	Name
1	6.397	340952	0.02	Tricyclene
2	6.510	1624223	0.11	Thujene <alpha->
3	6.688	3903950	0.27	Pinene <alpha->
4	7.073	2699869	0.19	Camphene
5	7.711	482663	0.03	Sabinene
6	7.802	576673	0.04	Pinene <beta->
7	7.933	3278896	0.23	1-Octen-3-ol
8	8.041	17155654	1.18	3-Octanone
9	8.161	9920392	0.68	Myrcene
10	8.280	1432760	0.10	Butanoate <butyl->
11	8.357	2333268	0.16	Hexanol <ethyl->
12	8.550	495949	0.03	Phellandrene <alpha->
13	8.702	1411818	0.10	Carene <delta-3->
14	8.758	6652173	0.46	Hexyl acetate
15	8.885	385449	0.03	Terpinene <alpha->
16	9.039	608904	0.04	Cymene <orta->
17	9.115	2632687	0.18	Cymene <para->
18	9.233	7015055	0.48	Limonene*
19	9.286	10517441	0.72	Eucalyptol
20	9.491	84124038	5.78	Ocimene <cis-, beta->
21	9.768	38978919	2.68	Ocimene <trans-, beta->
22	10.072	2169201	0.15	Terpinene <gamma->
23	10.367	1005832	0.07	Sabinene hydrate <cis->
24	10.475	1423648	0.10	Linalool oxide <cis->

Peak#	R.Time	Area	Area%	Name
25	10.916	2167629	0.15	Linalool oxide <trans-> + Terpinolene
26	11.444	442186899	30.36	Linalool*
27	11.576	20535749	1.41	Octene <3-acetoxy->
28	11.894	3126419	0.21	Acetate <3-octyl->
29	12.082	3827642	0.26	Alloocimene
30	12.554	3394847	0.23	Camphor
31	12.817	71291	0.00	Nerol oxide
32	13.225	22641802	1.55	Lavandulol
33	13.565	67087821	4.61	Terpinen-4-ol
34	13.710	277253	0.02	Cymen-8-ol <para->
35	13.765	1327092	0.09	Cryptone
36	13.812	4276360	0.29	Butyrate <hexyl->
37	13.934	13902572	0.95	Terpineol <alpha->
38	14.970	1288673	0.09	Nerol
39	15.046	644115	0.04	Hexyl 2-methyl butanoate
40	15.278	810832	0.06	Cuminaldehyde
41	15.378	401501	0.03	Carvone
42	15.722	466824011	32.05	Linalyl acetate
43	15.763	1345261	0.09	Geraniol
44	16.083	27397	0.00	Geraniol
45	16.462	2523529	0.17	Bornyl acetate
46	16.553	58002924	3.98	Lavandulyl acetate
47	16.777	418361	0.03	Cumin alcohol
48	17.609	303531	0.02	Tiglate <hexyl->
49	18.153	857687	0.06	Dihydro carveol acetate<neoiso->
50	18.471	5192497	0.36	Neryl acetate
51	18.877	294824	0.02	Copaene <alpha->
52	18.964	7803370	0.54	Geranyl acetate
53	19.020	516826	0.04	Hexanoate <hexyl->
54	19.123	164177	0.01	Bourbonene <beta->
55	19.186	964059	0.07	Sesquithujene <7-epi->
56	19.589	546725	0.04	Funebrene <alpha->
57	19.857	788631	0.05	Bergamotene <alpha-, cis->
58	20.057	59805830	4.11	Caryophyllene <(E)->
59	20.254	70626	0.00	Copaene <beta->
60	20.351	2138407	0.15	Bergamotene <alpha-, trans->
61	20.529	186041	0.01	Sesquisabinene
62	20.608	378313	0.03	Unknown
63	20.668	362541	0.02	Santalene <epi-, beta->
64	20.847	45090754	3.10	Farnesene <(E)-, beta->
65	21.564	6534420	0.45	Germacrene D
66	21.934	191770	0.01	Bicyclogermacrene
67	22.085	228615	0.02	Farnesene <(E,E)-, alpha->
68	22.141	427088	0.03	Bisabolene <beta->
69	22.352	1123657	0.08	Cadinene <gamma->
70	23.455	266634	0.02	Nerolidol <(E)->
71	24.097	3207320	0.22	Caryophyllene oxide
72	25.710	599671	0.04	Muurolol <alpha->
		1456324408	100.00	

Kosmetiniai alergenai: *-silpnas, **-vidutinio stiprumo, ***- stiprus alergenai

Analiz atliko

dr. Jurga B dien