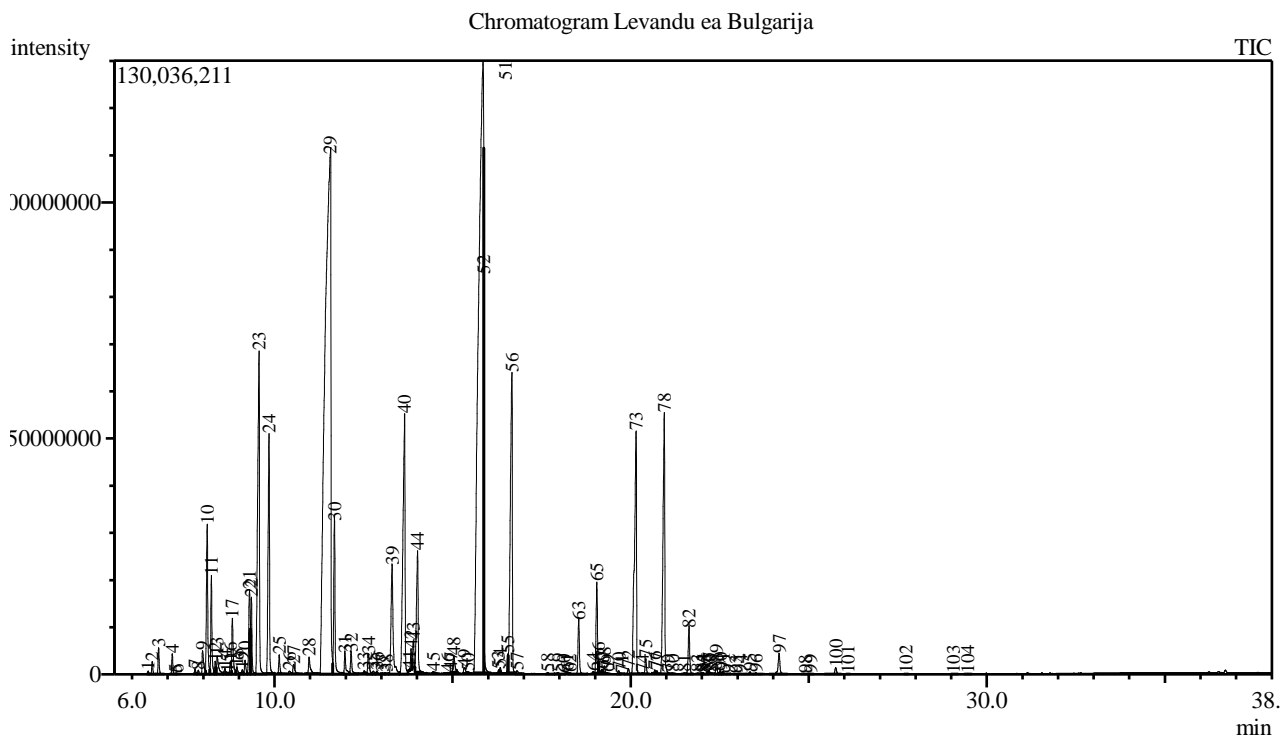


Analysis numb.: GC641
 Analysis date: 2019 01 09
 Sample name: Levand ea
 Botanical name: Lavandula angustifolia
 Sample batch num: LADSBEEODS18
 Sample origin: Bulgarija
 Best before:



Peak Report TIC

Peak#	R.Time	Area	Area%	Name
1	6.451	1164223	0.02	Tricyclene
2	6.566	5516770	0.12	Thujene <alpha->
3	6.746	11614306	0.24	Pinene <alpha->
4	7.129	8691403	0.18	Camphene
5	7.212	284850	0.01	Isobutyrate <butyl->
6	7.267	275234	0.01	Thuja-2,4(10)-diene
7	7.769	2287051	0.05	Sabinene
8	7.860	1768935	0.04	Pinene <beta->
9	7.978	15639690	0.33	1-Octen-3-ol
10	8.109	82364315	1.73	Octan-3-one
11	8.226	46497097	0.98	Myrcene
12	8.334	6389887	0.13	Butanoate <butyl->
13	8.390	14574189	0.31	Hexanol <ethyl->
14	8.606	3416109	0.07	Phellandrene <alpha->
15	8.680	1026656	0.02	Linalool oxide <dehydro-, cis->
16	8.760	6120480	0.13	Carene <delta-3->
17	8.815	30510829	0.64	Acetic acid, hexyl ester
18	8.941	5055541	0.11	Terpinene <alpha->
19	9.095	2424810	0.05	Cymene <meta->
20	9.172	8210179	0.17	Cymene <para->
21	9.297	51761697	1.09	Limonene*
22	9.350	36136876	0.76	Eucalyptol
23	9.565	240786558	5.07	Ocimene <cis-, beta->
24	9.846	141003578	2.97	Ocimene <trans-, beta->

Peak#	R.Time	Area	Area%	Name
25	10.133	9081908	0.19	Terpinene <gamma->
26	10.420	2149481	0.05	Sabinene hydrate <cis->
27	10.536	7544801	0.16	Linalool oxide <cis->
28	10.971	11738736	0.25	Terpinolene
29	11.566	1260481544	26.52	Linalool*
30	11.686	86187743	1.81	Octene <3-acetoxy->
31	11.982	14259001	0.30	Acetate <3-octyl->
32	12.154	14160356	0.30	Alloocimene
33	12.518	1452434	0.03	Unknown
34	12.640	13406287	0.28	Camphor
35	12.780	2037105	0.04	Unknown
36	12.877	2173830	0.05	Nerol oxide
37	13.030	1225758	0.03	Borneol
38	13.147	1108686	0.02	Mentha-1,5-dien-8-ol <para->
39	13.304	92316467	1.94	Lavandulol
40	13.651	222170046	4.67	Terpinen-4-ol
41	13.785	719981	0.02	Cymen-8-ol <para->
42	13.833	9588254	0.20	Cryptone
43	13.896	14193840	0.30	Butyrate <hexyl->
44	14.017	82866091	1.74	Terpineol <alpha->
45	14.456	1422334	0.03	Verbenone
46	14.863	934877	0.02	Carveol <trans->
47	14.954	1064576	0.02	Isobornyl formate
48	15.035	12308883	0.26	Nerol
49	15.330	4493650	0.09	Cuminaldehyde
50	15.439	1401960	0.03	Carvone
51	15.855	1254615982	26.39	Linalyl acetate
52	15.876	43154149	0.91	Geraniol*
53	16.294	1756059	0.04	Unknown
54	16.338	3530182	0.07	Phellandral
55	16.551	8518368	0.18	Bornyl acetate
56	16.665	249642491	5.25	Lavandulyl acetate
57	16.810	3229936	0.07	Cumin alcohol
58	17.675	1410966	0.03	Tiglate <hexyl->
59	17.971	1650865	0.03	Linalool propanoate
60	18.122	300352	0.01	Benzyl butanoate
61	18.215	1170615	0.02	Dihydro carveol acetate<neoiso->
62	18.297	981677	0.02	Unknown
63	18.545	32538397	0.68	Neryl acetate
64	18.946	1243369	0.03	Copaene <alpha->
65	19.049	52242064	1.10	Geranyl acetate
66	19.097	4029992	0.08	Hexyl hexoate
67	19.196	1266541	0.03	Bourbonene <beta->
68	19.262	4019189	0.08	Sesquithujene <7-epi->
69	19.352	373895	0.01	Elemene <beta->
70	19.665	1798410	0.04	Sesquithujene
71	19.756	319963	0.01	Caryophyllene <(Z)->
72	19.942	3605803	0.08	Bergamotene <alpha-, cis->
73	20.152	209103413	4.40	Caryophyllene <(E)->
74	20.327	436580	0.01	Copaene <beta->
75	20.424	8509489	0.18	Bergamotene <alpha-, trans->
76	20.678	1876521	0.04	Farnesene <(Z)-, beta->
77	20.736	1583663	0.03	Santalene <epi-, beta->
78	20.944	193248778	4.07	Farnesene <(E)-, beta->
79	21.060	279838	0.01	Santalene <beta->
80	21.183	397755	0.01	Muurola-4(14),5-diene <cis->
81	21.505	513207	0.01	Neocallitropsene <alpha->
82	21.642	29781918	0.63	Germacrene D
83	21.885	386911	0.01	Zingiberene <alpha->
84	21.997	589215	0.01	Bicyclogermacrene
85	22.050	238436	0.01	Murolol <alpha->
86	22.150	1295758	0.03	Farnesene <(E,E)-, alpha->
87	22.205	1453458	0.03	Bisabolene <beta->
88	22.278	348109	0.01	Curcumene <beta->
89	22.413	6696181	0.14	Cadinene <gamma->
90	22.518	2049118	0.04	Teresantalol
91	22.599	1945898	0.04	Cadinene <delta->
92	22.752	265287	0.01	Bisabolene <(E)-, gamma->
93	22.957	261992	0.01	Cadinene <alpha->

Peak#	R.Time	Area	Area%	Name
94	23.092	600045	0.01	Calacorene <alpha->
95	23.355	1563508	0.03	Unknown
96	23.517	1322108	0.03	Nerolidol <(E)->
97	24.171	16080424	0.34	Caryophyllene oxide
98	24.907	446982	0.01	Humulene epoxide II
99	25.050	644125	0.01	Diepicubenol <1,10->
100	25.762	4812606	0.10	Muurolol <alpha->
101	26.108	297543	0.01	Cadinol <alpha->
102	27.729	272925	0.01	Sesquilandulyl acetate<(E)->
103	29.061	204334	0.00	Farnesyl acetate
104	29.469	370960	0.01	Phytone
		4753286242	100.00	

Kosmetiniai alergenai: *-silpnas, **-vidutinio stiprumo, ***- stiprus alergenai

Analiz atliko

dr. Jurga B dien