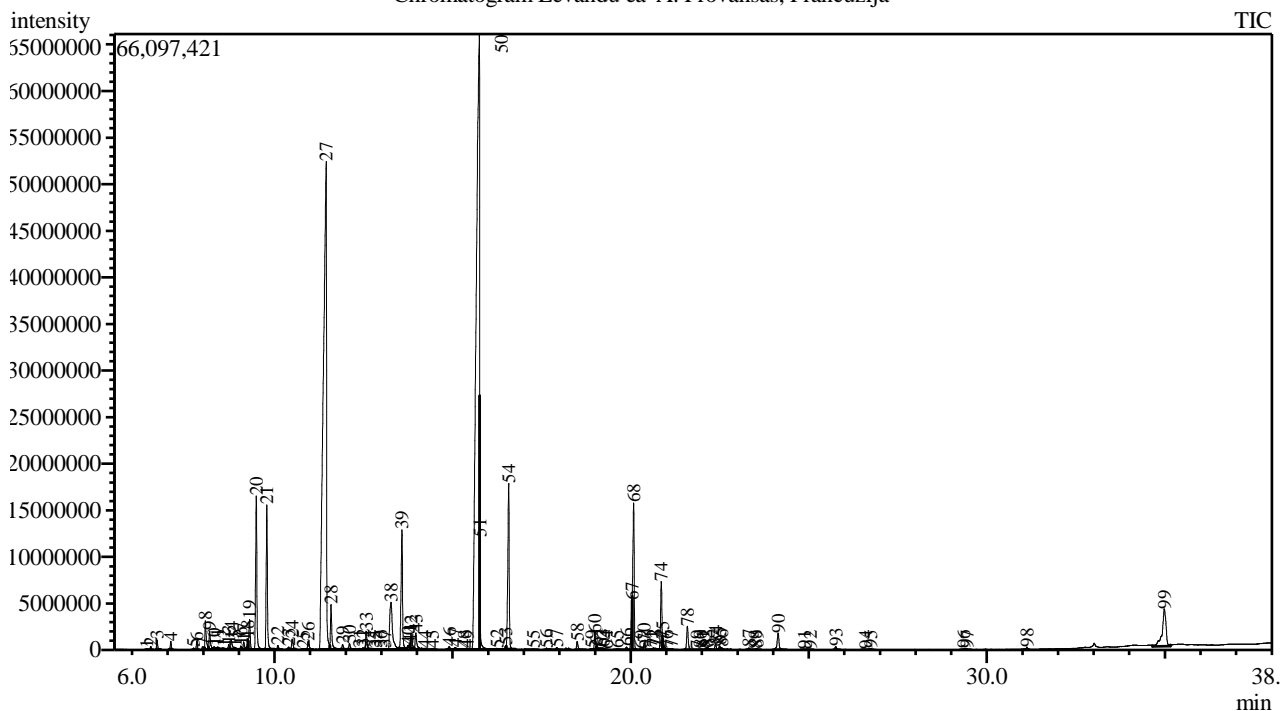


Analysis numb.: GC1018
 Analysis date: 2020 10 26
 Sample name: Levandu ea
 Botanical name: Lavandula angustifolia
 Sample batch num: LOT 0028837
 Sample origin: A. Provansas, Prancuzija
 Best before: 2021 10

Chromatogram Levandu ea A. Provansas, Prancuzija



Peak Report TIC

Peak#	R.Time	Area	Area%	Name
1	6.410	186802	0.02	Tricyclene
2	6.524	691963	0.06	Thujene <alpha->
3	6.702	2114130	0.18	Pinene <alpha->
4	7.087	1739488	0.15	Camphene
5	7.727	387727	0.03	Sabinene
6	7.818	1797113	0.15	Pinene <beta->
7	7.981	1125400	0.09	1-Octen-3-ol
8	8.056	7593018	0.64	3-Octanone
9	8.177	5277829	0.44	Myrcene
10	8.304	906062	0.08	Butanoate <butyl->
11	8.399	1149504	0.10	3-Octanol
12	8.569	254317	0.02	Phellandrene <alpha->
13	8.714	1107295	0.09	Carene <delta-3->
14	8.781	2881162	0.24	Hexyl acetate
15	8.902	483524	0.04	Terpinene <alpha->
16	9.054	831795	0.07	cymene <orta->
17	9.133	2097427	0.18	Cymene <para->
18	9.247	2476266	0.21	Limonene*
19	9.298	7858133	0.66	Eucalyptol
20	9.488	39576911	3.34	Ocimene <cis-, beta->
21	9.783	36637061	3.09	Ocimene <trans-, beta->
22	10.092	1020626	0.09	Terpinene <gamma->
23	10.395	697562	0.06	Sabinene hydrate <cis->
24	10.495	2979065	0.25	Linalool oxide <cis->

Peak#	R.Time	Area	Area%	Name
25	10.807	218611	0.02	Camphenilone + Terpinolene
26	10.943	2735872	0.23	Linalool oxide <trans->
27	11.448	326625151	27.54	Linalool*
28	11.588	13112150	1.11	Octen-3-yl acetate <1->
29	11.912	1864720	0.16	Acetate <3-octyl->
30	12.106	2095162	0.18	Alloocimene
31	12.388	392800	0.03	Nopinone
32	12.484	615521	0.05	Pinocarveol <trans->
33	12.575	5134695	0.43	Camphor
34	12.750	76831	0.01	Camphene hydrate
35	12.837	78082	0.01	Nerol oxide
36	12.983	185353	0.02	Unknown
37	13.093	252164	0.02	Pinocarvone
38	13.274	27459367	2.31	Borneol
39	13.579	36360690	3.07	Terpinen-4-ol
40	13.751	345760	0.03	Cymen-8-ol <para->
41	13.807	223583	0.02	Cryptone
42	13.833	4185460	0.35	Butyrate <hexyl->
43	13.968	5833363	0.49	Terpineol <alpha->
44	14.210	325341	0.03	Myrtenol
45	14.428	256315	0.02	Verbenone
46	14.908	737897	0.06	Isobornyl formate
47	15.078	987082	0.08	Neral + Hexyl isovalerate
48	15.336	323388	0.03	Cuminaldehyde
49	15.417	220868	0.02	Carvone
50	15.751	434988715	36.67	Linalyl acetate
51	15.767	8803128	0.74	Geraniol*
52	16.249	524280	0.04	Isopulegyl acetate
53	16.488	837049	0.07	Bornyl acetate
54	16.575	48494463	4.09	Lavandulyl acetate
55	17.266	340163	0.03	Unknown
56	17.642	500991	0.04	Tiglate <hexyl->
57	17.929	916219	0.08	Unknown
58	18.503	2575036	0.22	Neryl acetate
59	18.904	148003	0.01	Copaene <alpha->
60	18.994	4288836	0.36	Geranyl acetate
61	19.043	429870	0.04	Hexyl hexanoate
62	19.150	177059	0.01	Bourbonene <beta->
63	19.217	456000	0.04	Sesquithujene <7-epi->
64	19.317	87919	0.01	Elemene <beta->
65	19.616	251313	0.02	Funebrene <alpha->
66	19.887	820434	0.07	Bergamotene <alpha-, cis->
67	20.040	9857736	0.83	Santalene <alpha->
68	20.084	41583523	3.51	Caryophyllene
69	20.288	62838	0.01	Copaene <beta->
70	20.382	1954465	0.16	Bergamotene <alpha-, trans->
71	20.560	180940	0.02	Farnesene <(Z)-, beta->
72	20.639	393202	0.03	Sesquisabinene
73	20.701	353937	0.03	Santalene <epi-, beta->
74	20.860	19345545	1.63	Farnesene <(E)-, beta->
75	20.903	2095509	0.18	Humulene <alpha->
76	21.012	90456	0.01	Santalene <beta->
77	21.143	96887	0.01	Cadina-1(6),4-diene <cis->
78	21.597	7343333	0.62	Germacrene D
79	21.863	165946	0.01	Zingiberene <alpha->
80	21.961	131039	0.01	Bicyclgermacrene
81	22.029	29606	0.00	Murolene <alpha->
82	22.118	239890	0.02	Farnesene <(E,E)-, alpha->
83	22.174	507173	0.04	Bisabolene <beta->
84	22.388	1733918	0.15	Cadinene <gamma->
85	22.498	1027480	0.09	Teresantalol
86	22.555	538320	0.05	Sesquiphellandrene <beta->
87	23.327	623699	0.05	Unknown
88	23.496	97810	0.01	Nerolidol <(E)->
89	23.556	191581	0.02	Unknown
90	24.144	6683374	0.56	Caryophyllene oxide
91	24.879	148465	0.01	Humulene epoxide II
92	25.043	175673	0.01	Diepicubenol <1,10->
93	25.764	981591	0.08	Murolol <alpha->

Peak#	R.Time	Area	Area%	Name
94	26.596	193451	0.02	Cadalene
95	26.740	427923	0.04	Bisabolol <alpha->
96	29.350	236690	0.02	Neophytadiene
97	29.450	175056	0.01	Phytone
98	31.128	493219	0.04	Unknown
99	34.989	30852270	2.60	Squalene
		1186168429	100.00	

Kosmetiniai alergenai: *-silpnas, **-vidutinio stiprumo, ***- stiprus alergenai

Analiz atliko

dr. Jurga B dien