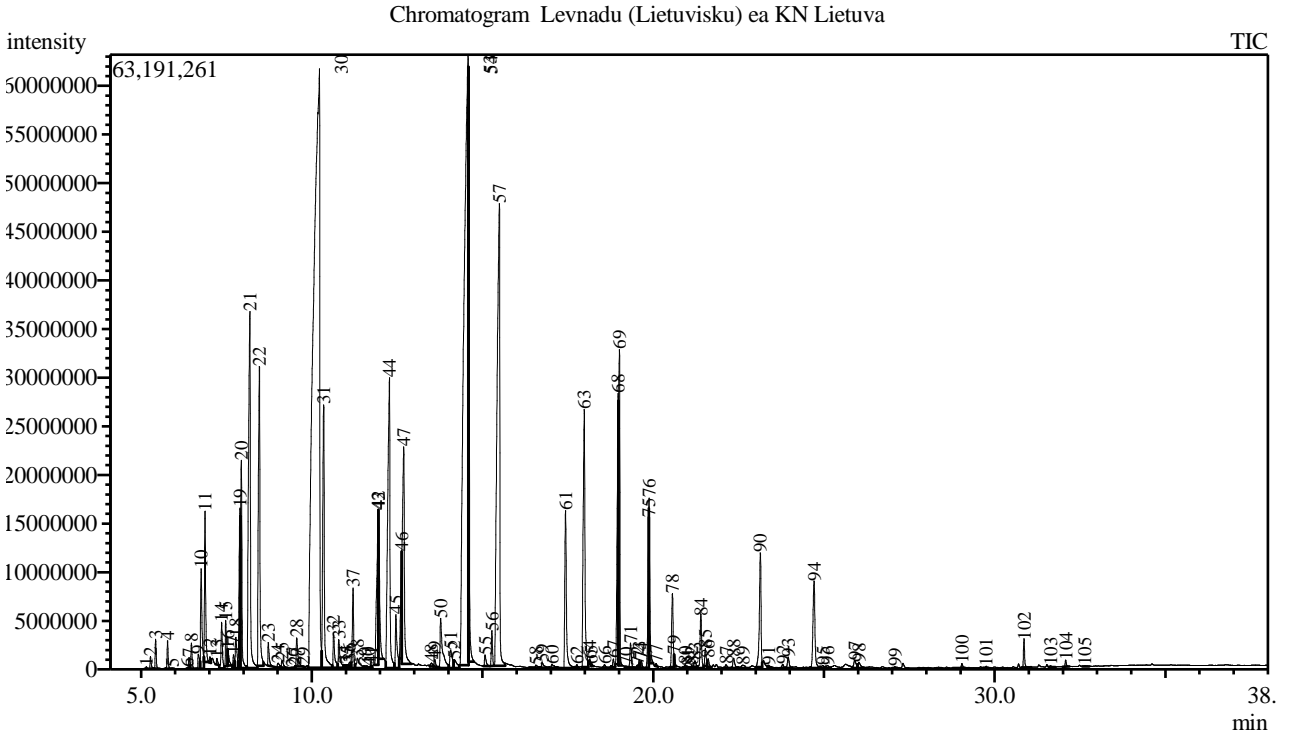


Analysis numb.: GC2146
 Analysis date: 2025 08 27
 Sample name: Levnadu (lietuvisku) ea
 Botanical name: Lavandula angustifolia
 Sample batch num: PN25RU
 Sample origin: KN Lietuva
 Best before: galioja iki 2027 08



Peak Report TIC

Peak#	R.Time	Area	Area%	Name
1	5.156	438825	0.01	Tricyclene
2	5.277	2900990	0.09	Thujene <alpha->
3	5.428	6276231	0.19	Pinene <alpha->*
4	5.778	6445616	0.20	Camphene
5	5.927	123395	0.00	Thuja-2,4(10)-diene
6	6.353	211203	0.01	Cyclopentene <3,5-dimethylene-1,4,4-trimet
7	6.408	2660245	0.08	Sabinene
8	6.476	6167917	0.19	Pinene <beta->*
9	6.677	4906938	0.15	1-Octen-3-ol
10	6.761	29684346	0.90	3-Octanone
11	6.875	37516333	1.14	Myrcene
12	7.018	1455197	0.04	Butyl butanoate + Unknown
13	7.222	1598695	0.05	Phellandrene <alpha->
14	7.360	13036906	0.39	Carene <delta-3->
15	7.479	12232012	0.37	Hexyl acetate
16	7.539	4778060	0.14	Terpinene <alpha->*
17	7.707	3862000	0.12	Cymene <meta->
18	7.777	10551943	0.32	Cymene <para->
19	7.900	44566492	1.35	Limonene*
20	7.939	51740718	1.57	Phellandrene <beta-> + Eucalyptol
21	8.190	139888402	4.24	Ocimene <(Z)-, beta->
22	8.468	98948078	3.00	Ocimene <(E)-, beta->
23	8.728	6140842	0.19	Terpinene <gamma->*
24	9.013	1817758	0.06	Sabinene hydrate <cis->

Peak#	R.Time	Area	Area%	Name
25	9.129	2797112	0.08	Linalool oxide <cis->
26	9.426	183780	0.01	Camphenilone
27	9.511	343535	0.01	Mentha-2,4(8)-diene <para->
28	9.560	9650300	0.29	Terpinolene*
29	9.762	141963	0.00	Camphenone <6->
30	10.227	774925862	23.47	Linalool*
31	10.351	89011126	2.70	1-Octen-3-yl-acetate
32	10.643	11733268	0.36	Acetate <3-octyl->
33	10.794	9947498	0.30	Alloocimene
34	10.970	1307469	0.04	Linalool oxide <cis->
35	11.035	1365860	0.04	Nopinone
36	11.112	2264881	0.07	Pinocarveol <trans->
37	11.212	20736066	0.63	Camphor*
38	11.339	6522051	0.20	Isobutyrate <hexyl->
39	11.556	978743	0.03	Nerol oxide
40	11.657	736077	0.02	Isoborneol
41	11.736	935902	0.03	Pinocarvone
42	11.950	49528039	1.50	Borneol
43	11.953	36578505	1.11	Lavandulol
44	12.277	136073353	4.12	Terpinen-4-ol
45	12.467	18430938	0.56	Cryptone
46	12.640	25082696	0.76	Hexyl butanoate
47	12.696	87022457	2.64	Terpineol <alpha->*
48	13.509	1298555	0.04	Verbenone
49	13.606	2217700	0.07	Isbornyl formate
50	13.778	25504014	0.77	Nerol*
51	14.068	8844199	0.27	Cuminaldehyde
52	14.180	5579294	0.17	Carvone*
53	14.578	556031982	16.84	Linalyl acetate*
54	14.602	103120182	3.12	Geraniol*
55	15.082	3935676	0.12	Carvone oxide <cis->
56	15.281	8667972	0.26	Bornyl acetate
57	15.496	261744820	7.93	Lavandulyl acetate
58	16.572	1263749	0.04	Tiglate <hexyl->
59	16.760	2411763	0.07	Unknown
60	17.041	2671678	0.08	Terpinyl acetate <alpha->
61	17.434	52962791	1.60	Neryl acetate
62	17.771	666426	0.02	Copaene <alpha->
63	17.984	96899053	2.93	Geranyl acetate*
64	18.139	1360820	0.04	Sesquithujene <7-epi->
65	18.190	521794	0.02	Elemene <beta->
66	18.582	968196	0.03	Sesquithujene
67	18.840	2641556	0.08	Bergamotene <alpha-, cis->
68	18.973	67199011	2.04	Santalene <alpha->
69	19.012	85469465	2.59	Caryophyllene*
70	19.204	333486	0.01	Copeane <beta->
71	19.343	7113219	0.22	Bergamotene <alpha-, trans->
72	19.535	507688	0.02	Sesquisabinene
73	19.595	1447873	0.04	Farnesene <(Z)-, beta->
74	19.652	2071656	0.06	Santalene <epi-, beta->
75	19.870	24446589	0.74	Humulene <alpha->
76	19.881	30546812	0.93	Farnesene <(E)-, beta->
77	20.091	646315	0.02	Muurolo-4(14),5-diene <cis->
78	20.563	22974650	0.70	Germacrene D
79	20.615	2287249	0.07	Unknown
80	20.946	953232	0.03	Bicyclogermacrene
81	21.030	249379	0.01	Muurolo-4 <alpha->
82	21.127	608372	0.02	Germacrene A
83	21.225	2227153	0.07	Bisabolene <beta->
84	21.402	17326853	0.52	Cadinene <gamma->
85	21.530	5179703	0.16	Teresantalol
86	21.611	2538941	0.08	Sesquiphellandrene <beta-> + Cadinene <del
87	22.140	1605489	0.05	Calacorene <alpha->
88	22.361	3992867	0.12	Unknown
89	22.632	2616204	0.08	Calacorene <beta-> + Unknown
90	23.140	39918907	1.21	Caryophyllene oxide
91	23.387	584325	0.02	Viridiflorol
92	23.800	1385758	0.04	Humulene epoxide II
93	23.960	4028984	0.12	Diepicubenol <1,10->

Peak#	R.Time	Area	Area%	Name
94	24.717	37204215	1.13	Cadinol <epi-alpha->
95	24.971	1681794	0.05	T-Muurolol + Muurolol <alpha->
96	25.111	1427584	0.04	Cadinol <alpha->
97	25.909	4229219	0.13	Bisabolol <alpha->
98	26.032	3711201	0.11	Unknown
99	27.083	553076	0.02	Farnesyl acetate
100	29.049	1234742	0.04	Phytone
101	29.758	423935	0.01	Springene <alpha->
102	30.866	7020427	0.21	Unknown
103	31.650	369259	0.01	Geranyl linalool<(E,E)->
104	32.087	1714653	0.05	Manool
105	32.641	288204	0.01	Phytol
		3301677332	100.00	

Kosmetiniai alergenai: *-silpnas, **-vidutinio stiprumo, ***- stiprus alergenai

Analiz atliko

dr. Jurga B dien