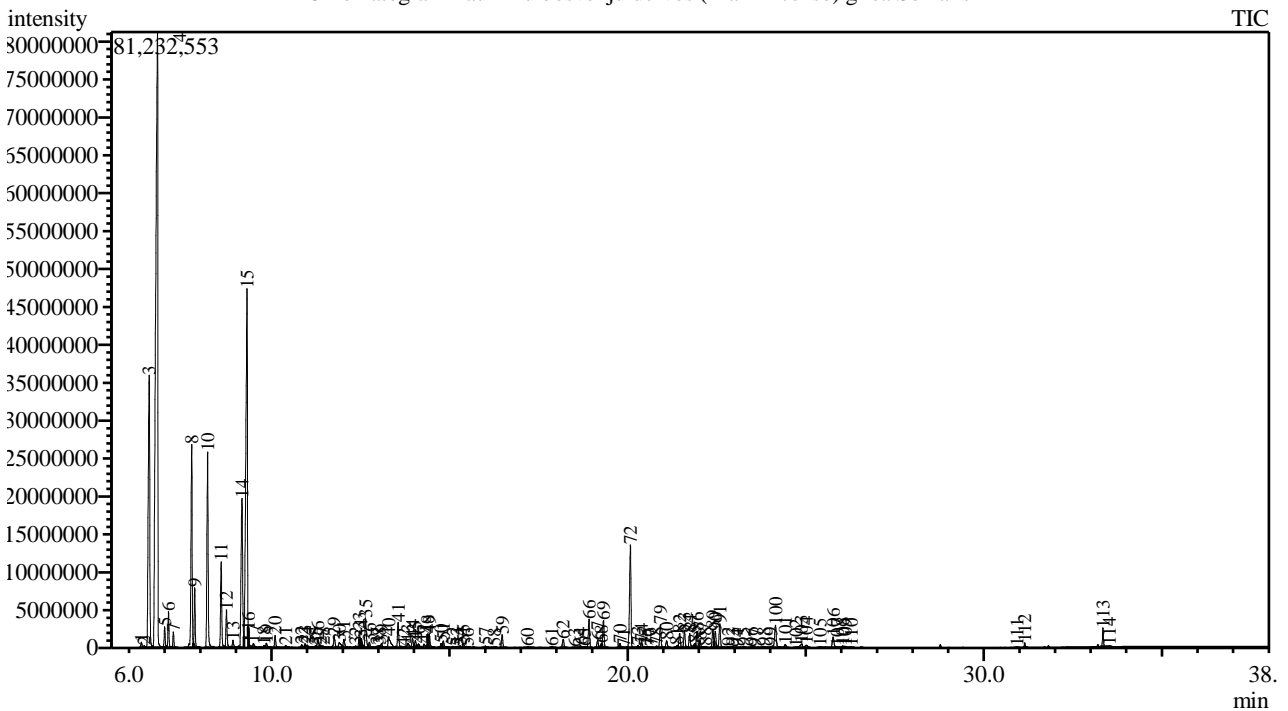


Analysis numb.: GC941  
 Analysis date: 2020 06 30  
 Sample name: Laukini bosvelij dervos (Frankincenso) grynasis ea  
 Botanical name: Boswellia carterii  
 Sample batch num: LOT 0028153  
 Sample origin: Somalis  
 Best before: 2022 06 12

Chromatogram Laukiniu bosveliju dervos (Frankincenso) gr ea Somalis



Peak Report TIC

Peak#	R.Time	Area	Area%	Name
1	6.346	1585051	0.14	Unknown
2	6.425	621525	0.06	Tricyclene
3	6.565	108320537	9.68	Thujene <alpha->
4	6.798	334457054	29.88	Pinene <alpha->
5	7.000	5545217	0.50	Thuja-2,4(10)-diene
6	7.108	9333545	0.83	Camphene
7	7.245	4138392	0.37	Thuja-2,4(10)-diene
8	7.760	62244724	5.56	Sabinene
9	7.845	15470110	1.38	Pinene <beta->
10	8.205	60727104	5.43	Myrcene
11	8.587	25491125	2.28	Phellandrene <alpha->
12	8.736	11841578	1.06	Carene <delta-3->
13	8.918	2557718	0.23	Terpinene <alpha->
14	9.171	60718793	5.43	Cymene <para->
15	9.312	140097734	12.52	Limonene*
16	9.353	2168876	0.19	Sylvestrene + Eucalyptol
17	9.492	2087964	0.19	Ocimene <cis-, beta->
18	9.789	816635	0.07	Ocimene ,trans-, beta->
19	9.857	1618170	0.14	Unknown
20	10.100	4123653	0.37	Terpinene <gamma->
21	10.398	700908	0.06	Sabinene hydrate <cis->
22	10.848	1037113	0.09	Limonene oxide <trans->
23	10.942	1239182	0.11	Terpinolene
24	11.002	1470309	0.13	Cymenene <para->

Peak#	R.Time	Area	Area%	Name
25	11.233	611982	0.05	Butyrate <2-methylbutyl-, 2-methyl->
26	11.301	3128258	0.28	Linalool* + Unknown
27	11.375	909567	0.08	Butanoic acid <3-methyl-, 3-methylbutyl-> e:
28	11.452	514726	0.05	Thujone <alpha->
29	11.763	4562875	0.41	Thujone <beta->
30	11.905	3047904	0.27	Mentha-2,8-dien-1ol <trans-, para->
31	12.031	3556774	0.32	Campholenal <alpha->
32	12.363	731645	0.07	Mentha-2,8-dien-1-ol <cis-, para->
33	12.466	5509907	0.49	Pinocarveol <trans->
34	12.517	2880525	0.26	Verbenol <cis->
35	12.643	10628853	0.95	Verbenol <trans->
36	12.748	1926505	0.17	Mentha-1,5-dien-8-ol <para->
37	12.967	507659	0.05	Sabina ketone
38	13.031	681086	0.06	Pinocamphone <trans->
39	13.091	1638405	0.15	Pinocarvone
40	13.290	7262995	0.65	Mentha-1,5-dien-8-ol <para-> +Umbellulone
41	13.554	8589402	0.77	Terpinen-4-ol
42	13.700	541578	0.05	Thuj-3-en-10-al
43	13.832	2351742	0.21	Cymen-8-ol <para->
44	13.958	3315528	0.30	Terpineol <alpha->
45	14.040	2662467	0.24	Myrtenal
46	14.128	1608480	0.14	Myrtenol
47	14.285	1923219	0.17	Sabinol <trans->
48	14.386	4227038	0.38	Acetate <octyl->
49	14.427	4818264	0.43	Verbenone
50	14.762	1611238	0.14	Carveol <trans->
51	14.824	2511940	0.22	Decyl <methyl-> ether
52	15.093	813093	0.07	Carveol <cis-. + Unknown
53	15.214	456067	0.04	Isovalerate <hexyl->
54	15.297	730169	0.07	Cuminaldehyde
55	15.388	1600621	0.14	Carvone
56	15.500	310294	0.03	Carvotanacetone
57	16.004	781929	0.07	3,5-Dimethoxytoluene
58	16.254	412101	0.04	Phellandral
59	16.477	4364936	0.39	Bornyl acetate
60	17.192	541142	0.05	Carvacrol
61	17.868	505630	0.05	Elemene <delta->
62	18.191	3266205	0.29	Cubebene <alpha->
63	18.507	146002	0.01	Neryl acetate
64	18.677	854571	0.08	Cyclosativene
65	18.789	297462	0.03	Ylangene <alpha->
66	18.916	9537061	0.85	Copaene <alpha->
67	19.159	2606194	0.23	Bourbonene <beta->
68	19.266	787519	0.07	Cubebene <beta->
69	19.320	9420467	0.84	Elemene <beta->
70	19.784	1476629	0.13	Gurjunene <alpha->
71	19.887	113415	0.01	Bergamotene <alpha-, cis->
72	20.078	37743217	3.37	Caryophyllene <(E)->
73	20.290	802058	0.07	Copaene <beta->
74	20.388	1898956	0.17	Bergamotene <alpha-, trans->
75	20.484	241018	0.02	Guaiene <alpha->
76	20.552	252958	0.02	Aromandendrene
77	20.657	359153	0.03	Isogermacrene D
78	20.813	704373	0.06	Muurola-3,5-diene <trans->
79	20.920	8154166	0.73	Humulene <alpha->
80	21.095	2844493	0.25	Alloaromadendrene
81	21.373	647925	0.06	Cadina-1(6),4-diene <trans->
82	21.461	5688620	0.51	Murolene <gamma->
83	21.596	6044329	0.54	Germacrene D
84	21.743	5570526	0.50	Selinene <beta->
85	21.880	1416052	0.13	Muurola-4(14),5-diene <trans->
86	21.950	6542422	0.58	Selinene <alpha->
87	22.034	2557737	0.23	Murolene <alpha->
88	22.181	640670	0.06	Bulnesene <alpha->
89	22.394	6527737	0.58	Cadinene <gamma->
90	22.461	6061619	0.54	Cubebol
91	22.588	8892027	0.79	Cadinene <delta->
92	22.824	634339	0.06	Cadina-1,4-diene <trans->
93	22.947	648572	0.06	Cadinene <alpha->

Peak#	R.Time	Area	Area%	Name
94	23.087	186221	0.02	Calacorene <alpha->
95	23.252	532610	0.05	Elemol <alpha->
96	23.482	725653	0.06	Unknown
97	23.580	266727	0.02	Calacorene <beta->
98	23.821	1247222	0.11	Palustrol + Unknown
99	24.030	849266	0.08	Spathulenol
100	24.151	10094963	0.90	Caryophyllene oxide
101	24.428	1758019	0.16	Viridiflorol
102	24.733	258512	0.02	Ledol
103	24.886	2387733	0.21	Humulene epoxide II
104	25.017	1699085	0.15	Cubenol <1,10-di-epi->
105	25.406	669836	0.06	Epicubenol
106	25.770	5015528	0.45	Cadinol <epi-alpha->
107	25.888	360360	0.03	Muurolol <alpha->
108	26.038	809068	0.07	Eudesmol <beta->
109	26.116	769483	0.07	Cadinol <alpha->
110	26.280	429664	0.04	Patchouli alcohol
111	30.933	151240	0.01	Camphorene <m->
112	31.151	1184969	0.11	Neocembrene
113	33.346	4935551	0.44	Unknown
114	33.531	283074	0.03	Incensole acetate
		1119182837	100.00	

Kosmetiniai alergenai: \*-silpnas, \*\*-vidutinio stiprumo, \*\*\*- stiprus alergenai

Analiz atliko

dr. Jurga B dien