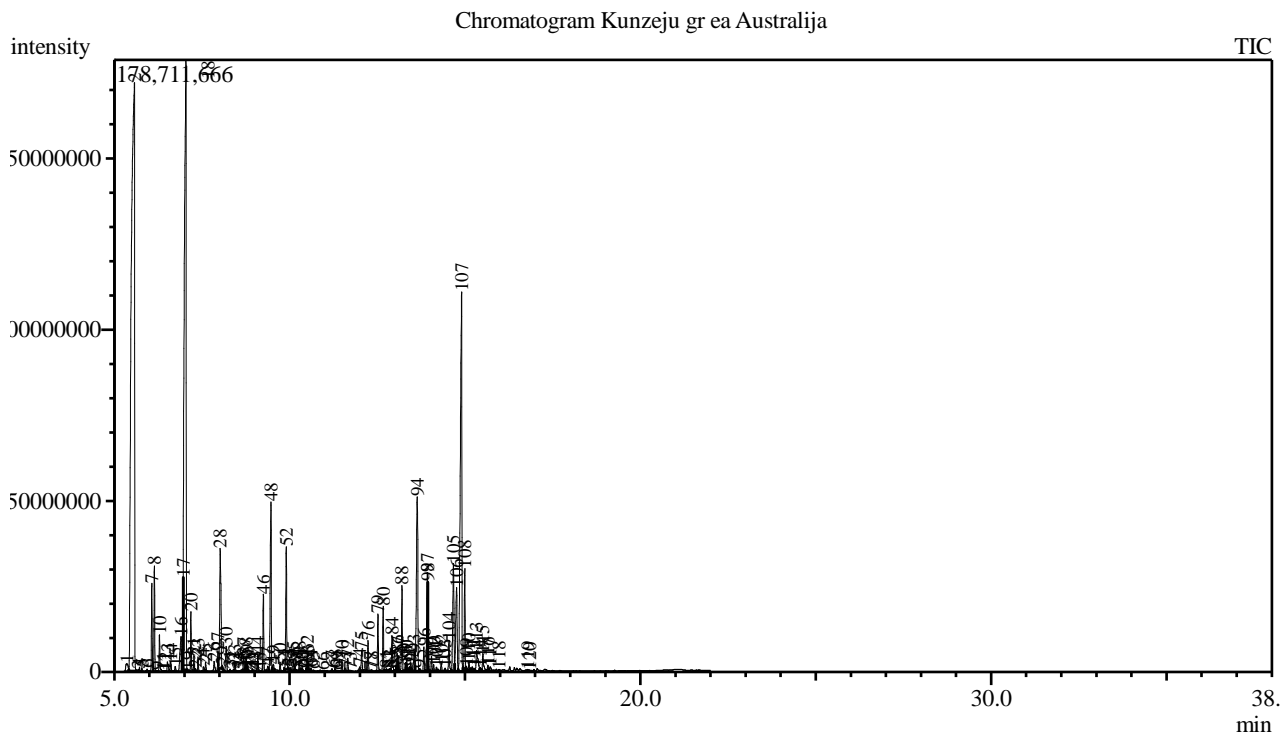


Analysis numb.: GC686  
 Analysis date: 2019 03 06  
 Sample name: Kunz j grynasis ea  
 Botanical name: Kunzea ambigua (Tick Bush)  
 Sample batch num: (B)P174233/PS16001558  
 Sample origin: Australija  
 Best before: 2020 04



Peak Report TIC

Peak#	R.Time	Area	Area%	Name
1	5.358	10598699	0.30	Thujene <alpha->
2	5.575	1132470594	32.17	Pinene <alpha->
3	5.690	441579	0.01	Fenchene <alpha->
4	5.719	1404982	0.04	Camphene
5	5.787	1289899	0.04	Thuja-2,4(10)-diene
6	5.936	1292011	0.04	Propanoate <isopentyl->
7	6.071	38162946	1.08	Sabinene
8	6.143	41843992	1.19	Pinene <beta->
9	6.232	426739	0.01	Hept-5-en-2-one <6-methyl->
10	6.289	16659100	0.47	Myrcene
11	6.405	460997	0.01	Decane
12	6.457	132354	0.00	Butyrate <isobutyl-, 2-methyl->
13	6.516	7024478	0.20	Hexenyl acetate <(3E)->
14	6.607	6054281	0.17	Isoamyl isobutyrate
15	6.738	2867924	0.08	Terpinene <alpha->
16	6.905	36864121	1.05	Cymene <para->
17	6.963	11451098	0.33	Limonene*
18	7.044	675753541	19.19	Eucalyptol
19	7.125	86795	0.00	Isovalerate <butyl->
20	7.185	25036897	0.71	Ocimene <trans-, beta->
21	7.271	6829050	0.19	Butyrate <isopentyl->
22	7.311	1190877	0.03	Butanoate <2-Methylbutyl ->
23	7.388	6516931	0.19	Terpinene <gamma->
24	7.541	3024931	0.09	1-Octanol

Peak#	R.Time	Area	Area%	Name
25	7.604	4946503	0.14	Sabinene hydrate <cis-> + Linalool oxide <ci
26	7.847	6788856	0.19	Terpinolene+ Cymenene <para->
27	7.956	9539421	0.27	Butyrate <3-methylbutyl-, 2-methyl->
28	8.020	85389656	2.43	Linalool*
29	8.081	617911	0.02	Isovalerate <2-methylbutyl->
30	8.192	16056401	0.46	Pinene oxide <alpha-> + Rose oxide <cis->
31	8.301	1367220	0.04	Fenchol <endo->
32	8.393	859251	0.02	Menth-2-en-1-ol <cis-, para->
33	8.440	5425827	0.15	Campholenal<alpha->
34	8.552	510800	0.01	Limonene oxide <cis->
35	8.611	901770	0.03	Epoxy-ocimene <(Z)->
36	8.663	394624	0.01	Nopinone
37	8.691	6119117	0.17	Pinocarveol <trans->
38	8.757	6753427	0.19	Verbenol <trans->
39	8.780	1460273	0.04	Citronellal
40	8.816	400879	0.01	Mentha-1,5-dien-8-ol <para->
41	8.935	1724019	0.05	Isopulegol <iso->
42	8.991	481441	0.01	Pinocamphone <trans->
43	9.023	601588	0.02	Pinocarvone
44	9.091	8870661	0.25	Terpineol <delta->
45	9.155	362583	0.01	Linalool oxide <cis-> (pyranoid)
46	9.251	35977862	1.02	Terpinen-4-ol
47	9.376	3917670	0.11	Cymen-8-ol <para->
48	9.467	102681984	2.92	Terpineol <alpha->
49	9.537	5794687	0.16	Myrtenol
50	9.726	4304946	0.12	Verbenone
51	9.842	2139536	0.06	Carveol <trans->
52	9.903	61396050	1.74	Citronellol*
53	9.970	425334	0.01	Hexyl 2-methylbutanoate
54	10.035	1388265	0.04	Isovalerate <hexyl->
55	10.102	4844353	0.14	Neral
56	10.152	2320041	0.07	Hexanoate <isopentyl->
57	10.199	890334	0.03	Carvone
58	10.270	5750423	0.16	Geraniol*
59	10.329	1847230	0.05	Phenyl ethyl acetate <2->
60	10.363	1354312	0.04	Decenal <(2E)->
61	10.471	1061341	0.03	Dec-2-en-1-ol
62	10.504	6444043	0.18	Geranial
63	10.530	1928464	0.05	Citronellyl formate
64	10.606	2142304	0.06	Ascaridol glycol<trans->
65	10.685	771259	0.02	
66	10.947	290063	0.01	Pinocarvyl acetate <cis->
67	11.208	1384058	0.04	Methyl geranate
68	11.291	1877265	0.05	Unknown
69	11.360	692783	0.02	Elemene <delta->
70	11.492	6089830	0.17	Terpinyl acetate <alpha->
71	11.572	1715360	0.05	Citronellyl acetate
72	11.656	6394009	0.18	Cubebene <alpha->
73	11.728	332620	0.01	Neryl acetate
74	11.999	2898430	0.08	Isoledene
75	12.052	11467358	0.33	Copaene <alpha->
76	12.235	15130217	0.43	Elemene <beta->
77	12.302	568162	0.02	Jasmone <(E)->
78	12.340	755852	0.02	Longifolene
79	12.517	27895653	0.79	Gurjunene <alpha->
80	12.667	30195712	0.86	Caryophyllene <(E)->
81	12.758	1670586	0.05	Maaliene <gamma->
82	12.832	1478767	0.04	Benzyl carbyl butyrate
83	12.868	1554865	0.04	Unknown
84	12.920	21038303	0.60	Guaiene <alpha-> + Selina-5,11-diene
85	13.036	1669850	0.05	Muurola-3,5-diene<trans->
86	13.069	5157208	0.15	Unknown
87	13.103	7433712	0.21	Humulene <alpha->
88	13.203	40224355	1.14	Alloaromadendrene
89	13.308	4696137	0.13	Cadina-1(6),4-diene <cis->
90	13.340	6219953	0.18	Muurolene <gamma->
91	13.412	2879842	0.08	Butyrate <2-methyl-, phenylethyl->
92	13.454	5341991	0.15	Phenethyl isovalerate
93	13.550	13019735	0.37	Selinene <beta->

Peak#	R.Time	Area	Area%	Name
94	13.635	143995207	4.09	Viridiflorene
95	13.710	1673509	0.05	Unknown
96	13.826	11291620	0.32	Cadinene <gamma->
97	13.926	60576469	1.72	Cadinene <delta->
98	13.942	24565720	0.70	Calamenene <cis->
99	14.045	6824887	0.19	Cadina-1,4-diene <trans->
100	14.104	3690232	0.10	Cadinene <alpha->
101	14.185	2187068	0.06	Calacorene <alpha->
102	14.322	4396944	0.12	Unknown
103	14.432	1815510	0.05	Calacorene <beta->
104	14.543	17721699	0.50	Palustrol
105	14.670	73744435	2.09	Spathulenol
106	14.760	67097307	1.91	Caryophyllene oxide + Globulol
107	14.902	337414550	9.58	Viridiflorol
108	14.993	48257777	1.37	Ledol
109	15.040	3612169	0.10	Humulene epoxide II
110	15.110	5196460	0.15	Leptospermone
111	15.205	2319669	0.07	Epicubenol
112	15.257	1736846	0.05	Eudesmol <gamma->
113	15.331	21509778	0.61	T-Muurolol + Muurolol <alpha->
114	15.437	2487963	0.07	Unknown
115	15.510	12737548	0.36	Cadinol <alpha->
116	15.653	3830872	0.11	Calamenen-10-ol <cis->
117	15.716	4141754	0.12	Allohimachalol
118	15.971	1168545	0.03	Shyobunol
119	16.783	1417744	0.04	Squamulosone
120	16.842	333447	0.01	Octadecane
		3520655887	100.00	

Kosmetiniai alergenai: \*-silpnas, \*\*-vidutinio stiprumo, \*\*\*- stiprus alergenai

Analiz atliko

dr. Jurga B dien