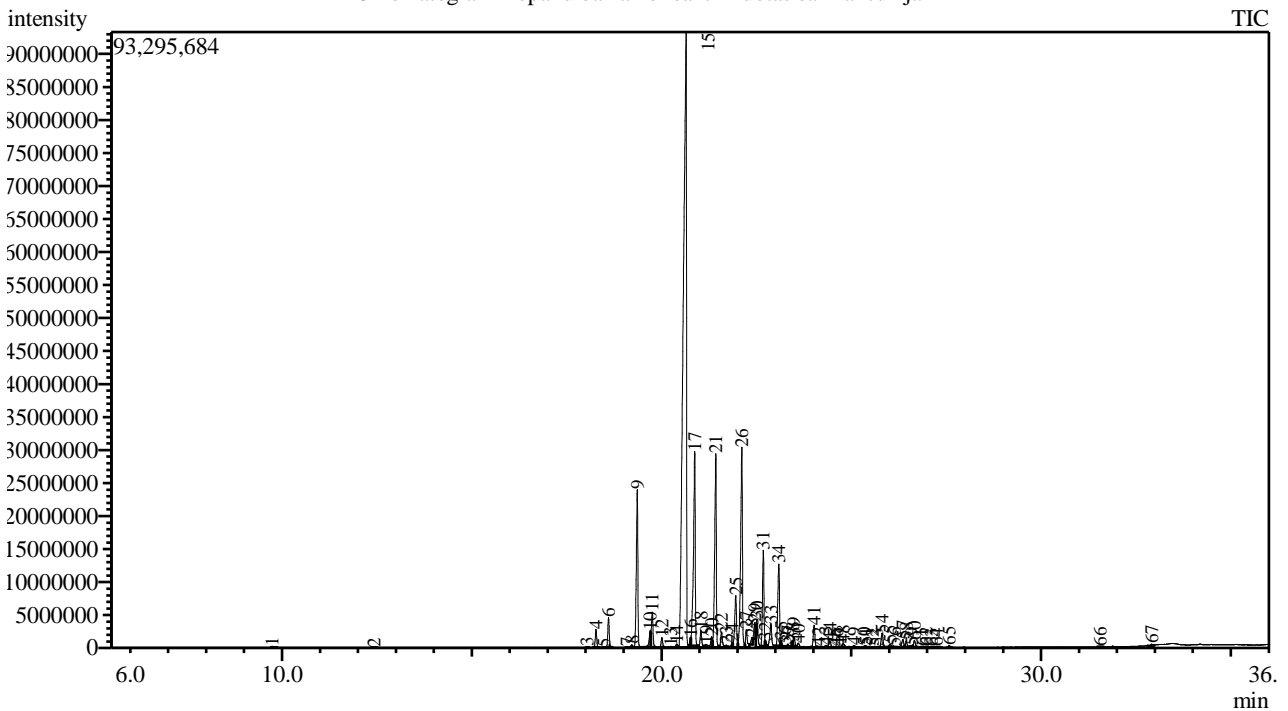


Analysis numb.: GC1566  
 Analysis date: 2023 04 17  
 Sample name: Kopaliu balzamo reaktifikuotas ea  
 Botanical name: Copaifera langsdorffii Dest.  
 Sample batch num: LOT 0123/1  
 Sample origin: Prancuzija  
 Best before: 2025 01 13

Chromatogram Kopaliu balzamo reaktifikuotas ea Prancuzija



Peak Report TIC

Peak#	R.Time	Area	Area%	Name
1	9.737	654808	0.06	Ocimene <(E)-, beta->
2	12.424	119697	0.01	Alloocimene
3	18.040	169775	0.01	Unknown
4	18.272	7283808	0.61	Elemene <delta->
5	18.476	68063	0.01	Silfiperfol-5-ene <7-epi->
6	18.603	11820377	0.99	Cubebene <alpha->
7	19.094	278308	0.02	Cyclosativene
8	19.216	1230663	0.10	Ylangene <alpha->
9	19.361	68442413	5.76	Copaene <alpha->
10	19.700	6777127	0.57	Cubebene <beta->
11	19.754	16492835	1.39	Elemene <beta->
12	20.009	3731932	0.31	Cyperene
13	20.243	369996	0.03	Gurjunene <alpha->
14	20.403	1545064	0.13	Bergamotene <alpha-, cis->
15	20.648	548854793	46.18	Caryophyllene
16	20.773	1954204	0.16	Copaene <beta->
17	20.873	98131141	8.26	Bergamotene <alpha-, trans->
18	21.038	7840054	0.66	Sesquisabinene
19	21.187	1346102	0.11	Santalene <epi-, beta->
20	21.320	5090609	0.43	Farnesene <(E)-, beta->
21	21.430	88989935	7.49	Humulene <alpha->
22	21.583	7387617	0.62	Alloaromandendrene
23	21.703	986726	0.08	Unknown
24	21.860	1911105	0.16	Cadina-1(6),4-diene <trans->

Peak#	R.Time	Area	Area%	Name
25	21.957	26050452	2.19	Muurolene <gamma->
26	22.116	99104028	8.34	Germacrene D
27	22.235	8218350	0.69	Selinene <beta->
28	22.385	3114475	0.26	Amorphene <gamma->
29	22.460	7545466	0.63	Selinene <alpha-> + Bicyclogermacrene
30	22.513	12773829	1.07	Muurolene <alpha->
31	22.681	39865138	3.35	Bisabolene <beta->
32	22.733	1297223	0.11	Cuprenene <alpha->
33	22.885	13672942	1.15	Cadinene <gamma->
34	23.089	38427483	3.23	Cadinene <delta->
35	23.154	1771059	0.15	Zonarene
36	23.246	346245	0.03	Bisabolene <(E)-gamma->
37	23.331	963026	0.08	Cadina-1,4-diene <trans->
38	23.457	1774483	0.15	Cadinene <alpha->
39	23.490	4215590	0.35	Bisabolene <(E)-, alpha->
40	23.605	2496580	0.21	Calacorene <alpha->
41	24.022	10011851	0.84	Germacrene B
42	24.149	547476	0.05	Calacorene <beta->
43	24.330	1075423	0.09	Maaliol
44	24.436	3260160	0.27	Caryophyllene alcohol
45	24.553	177352	0.01	Germacrene D-4-ol
46	24.620	220752	0.02	Spathulenol
47	24.707	363713	0.03	Unknown
48	24.789	2545135	0.21	Caryophyllene oxide
49	25.074	1248548	0.11	Viridiflorol
50	25.330	477937	0.04	Rosifoliol + Unknown
51	25.395	745080	0.06	Ledol
52	25.552	293836	0.02	Humulene epoxide II
53	25.673	246772	0.02	Diepicubenol <1,10->
54	25.813	7476383	0.63	Junenol
55	26.023	1932378	0.16	Epicubenol
56	26.132	477517	0.04	Cadinol <epi-, alpha->
57	26.361	4271735	0.36	T-Muurolol
58	26.450	2890645	0.24	Muurolol <alpha->
59	26.592	515800	0.04	Eudesmol <alpha->
60	26.663	3133002	0.26	Cadinol <alpha->
61	26.853	78268	0.01	Bisabolol-11-ol <(E)->
62	26.967	645067	0.05	Bisabolol <beta->
63	27.113	127788	0.01	Cadalene
64	27.243	331529	0.03	Bisabolol <alpha->
65	27.582	755702	0.06	Juniper camphor
66	31.559	197237	0.02	Manool
67	32.915	1235041	0.10	Unknown
		1188395648	100.00	

Kosmetiniai alergenai: \*-silpnas, \*\*-vidutinio stiprumo, \*\*\*- stiprus alergenai

Analiz atliko

dr. Jurga B dien