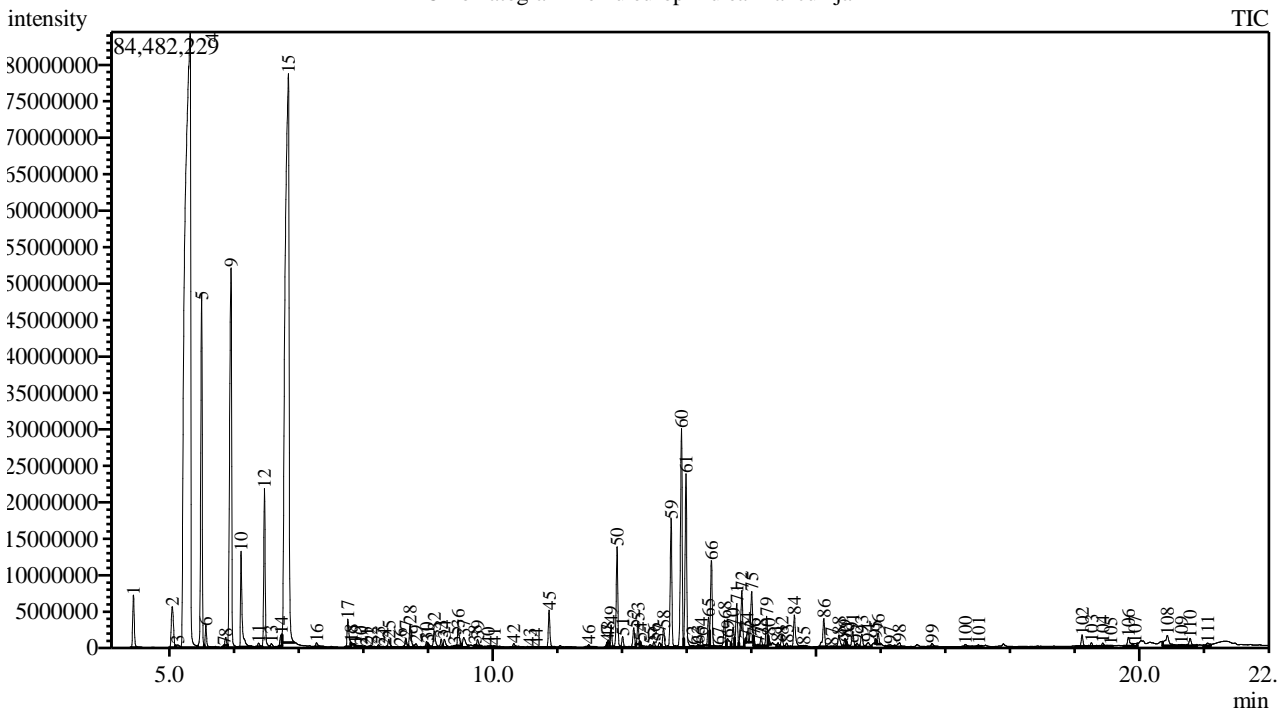


Analysis numb.: GC1917
 Analysis date: 2024 10 07
 Sample name: Keniu europiniu ea
 Botanical name: Abies alba
 Sample batch num: HESP0522
 Sample origin: Prancuzija
 Best before: 2027 05

Chromatogram Keniu europiniu ea Prancuzija



Peak Report TIC

Peak#	R.Time	Area	Area%	Name
1	4.442	11904384	0.76	Santene
2	5.043	13464342	0.86	Tricyclene
3	5.128	1265386	0.08	Thujene <alpha->
4	5.317	510810869	32.74	Pinene <alpha->
5	5.498	79155715	5.07	Camphene
6	5.565	5241212	0.34	Thuja-2,4(10)-diene
7	5.843	249716	0.02	Cyclopentene <3,5-dimethylene-1,4,4-trimetf
8	5.870	1712953	0.11	Sabinene
9	5.952	113462763	7.27	Pinene <beta->
10	6.106	23009256	1.47	Myrcene
11	6.380	1019822	0.07	Phellandrene <alpha->
12	6.471	34888899	2.24	Carene <delta-3->
13	6.579	1346992	0.09	Terpinene <alpha->
14	6.732	3141004	0.20	Cymene <para->
15	6.839	330813932	21.20	Limonene* + Sylvestrene
16	7.275	1207466	0.08	Terpinene <gamma->
17	7.757	7503632	0.48	Terpinolene
18	7.816	342527	0.02	Cymenene <para->
19	7.870	435254	0.03	Undecane
20	7.961	895095	0.06	Pinene oxide <alpha->
21	8.053	423602	0.03	Nonanal
22	8.115	681868	0.04	Pinene oxide <alpha->
23	8.235	983082	0.06	Fenchol <exo->
24	8.333	236318	0.02	Mentha-2,8-dien-1-ol <trans-, para->

Peak#	R.Time	Area	Area%	Name
25	8.394	2628500	0.17	Campholenal <alpha->
26	8.573	425102	0.03	Mentha-2,8-dien-1-ol <cis-, para->
27	8.655	2420726	0.16	Pinocarveol <trans->
28	8.723	6246404	0.40	Camphor
29	8.813	1199711	0.08	Camphene hydrate
30	8.976	1257342	0.08	Pinocamphone <trans->
31	8.996	696467	0.04	Pinocarvone
32	9.095	5079773	0.33	Borneol
33	9.204	1970214	0.13	Pinocamphone <cis->
34	9.252	2804077	0.18	Terpinen-4-ol
35	9.411	473204	0.03	Cymen-8-ol <para->
36	9.465	4933977	0.32	Terpineol <alpha->
37	9.553	4273421	0.27	Myrtenal + Myrtenol
38	9.725	220606	0.01	Unknown
39	9.763	1700592	0.11	Verbenone
40	9.930	773706	0.05	Carveol <trans->
41	10.023	1325402	0.08	Citronellol*
42	10.327	1416357	0.09	Linalyl acetate
43	10.579	304879	0.02	Myrtanol <trans->
44	10.677	163590	0.01	Isopulegyl acetate
45	10.873	9006176	0.58	Bornyl acetate
46	11.484	769534	0.05	Tricyclo[4.4.0.0(2,8)]decane, 5-hydroxy-, ac
47	11.770	720297	0.05	Citronellyl acetate
48	11.787	451101	0.03	Terpinyl acetate <alpha->
49	11.830	4738558	0.30	Cubebene <alpha->
50	11.923	23906006	1.53	Longipinene <alpha->
51	12.010	2648418	0.17	Longipinene <alpha->
52	12.182	5392023	0.35	Cyclosativene
53	12.244	5153739	0.33	Longicyclene
54	12.282	986458	0.06	Copaene <alpha-> + Unknown
55	12.437	1165725	0.07	Cubebene <beta->
56	12.493	1455261	0.09	Sativene
57	12.579	1472224	0.09	Longipinene <beta-> + Methyl eugenol
58	12.642	5154709	0.33	Sibirene
59	12.759	31761933	2.04	Longifolene
60	12.919	56905130	3.65	Caryophyllene
61	12.990	43130525	2.76	Himachala-2,4-diene
62	13.099	722761	0.05	Guaiene <alpha->
63	13.176	708116	0.05	Guaia-6,9-diene
64	13.225	2455786	0.16	Farnesene <(Z)-, beta->
65	13.336	6534745	0.42	Himachalene <alpha->
66	13.381	20746277	1.33	Humulene <alpha->
67	13.493	370348	0.02	Cadina-1(6),4-diene <cis->
68	13.585	7894506	0.51	Unknown
69	13.633	3782258	0.24	Muurolene <gamma->
70	13.718	5573924	0.36	Himachalene <gamma->
71	13.774	11699307	0.75	Himachala-1,4-diene <11-alpha-H->
72	13.854	16867000	1.08	Eremophilene + 10s,11s-Himachala-3(12),4-
73	13.913	430690	0.03	Muurola-4(14),5-diene <trans->
74	13.935	2436098	0.16	Muurolene <alpha->
75	14.005	13967847	0.90	Himachalene <beta->
76	14.037	1006365	0.06	Amorphene <delta->
77	14.101	306885	0.02	Bisabolene <(Z)-, gamma->
78	14.150	1912212	0.12	Cadinene <gamma->
79	14.234	7040308	0.45	Cadinene <delta->
80	14.263	1157112	0.07	Calamenene <trans->
81	14.412	1253765	0.08	Bisabolene <(E)-, alpha->
82	14.474	3209607	0.21	Vetivenene <gamma->
83	14.545	1202511	0.08	Calacorene <alpha->
84	14.666	9488061	0.61	Nerolidol <(E)->
85	14.810	958443	0.06	Calacorene <beta->
86	15.119	8385433	0.54	Caryophyllene oxide
87	15.239	71536	0.00	Tetradecanal
88	15.354	4157160	0.27	Longiborneol
89	15.448	1973076	0.13	Humulene epoxide II
90	15.473	648240	0.04	Cedrol <epi->
91	15.567	4555492	0.29	1H-Benzocyclohepten-7-ol, 2,3,4,4a,5,6,7,8-
92	15.634	1159616	0.07	Diepicubenol <1,10->
93	15.707	3730949	0.24	Epicubenol

Peak#	R.Time	Area	Area%	Name
94	15.808	2002856	0.13	T-Muurolol + Muurolol <alpha->
95	15.919	935603	0.06	Unknown
96	15.958	2939718	0.19	Himachalol
97	16.150	1540669	0.10	Calamenen-10-ol <cis-> + Unknown
98	16.291	2052266	0.13	Intermedeol
99	16.795	1208779	0.08	Unknown
100	17.312	1044752	0.07	Atlantone <(E)-alpha->
101	17.513	898490	0.06	cis-11-Hexadecenal
102	19.115	3092508	0.20	Cembrene
103	19.259	1011595	0.06	Cembrene A <(3E)->
104	19.436	1243434	0.08	Cembrene A <(3Z)->
105	19.559	264435	0.02	Sandaracopimara-8(14),15-diene
106	19.832	3406175	0.22	Manoyl oxide <13-epi->
107	19.933	1330893	0.09	Juhibione
108	20.433	6745940	0.43	Manool
109	20.653	999984	0.06	Juhibione <dehydro->
110	20.786	2673552	0.17	Abietadiene
111	21.058	1290427	0.08	Sclareol
		1560416466	100.00	

Kosmetiniai alergenai: *-silpnas, **-vidutinio stiprumo, ***- stiprus alergenai

Analiz atliko

dr. Jurga B dien