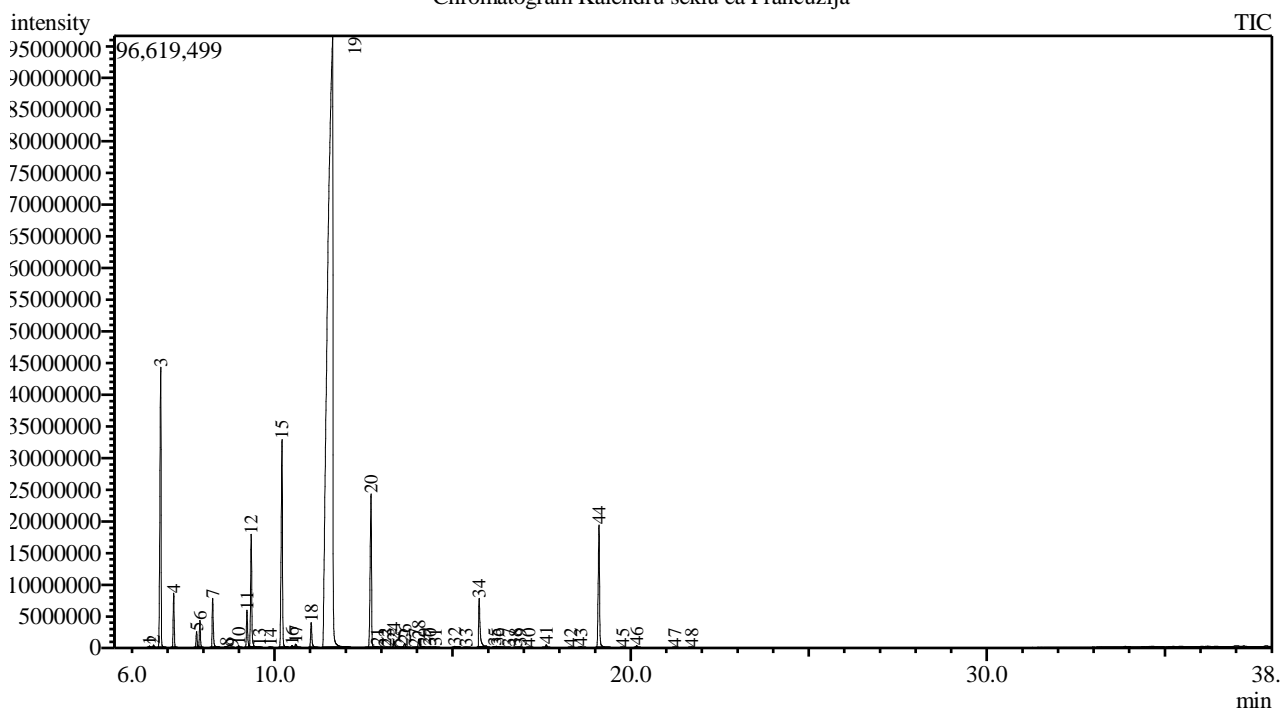


Analysis numb.: GC733
 Analysis date: 2019 07 31
 Sample name: Kalendr s kl eterinis aliejus
 Botanical name: Coriadrum sativum
 Sample batch num: 180038
 Sample origin: Pranc zija
 Best before: 2021 08

Chromatogram Kalendru seku ea Prancuzija



Peak Report TIC

Peak#	R.Time	Area	Area%	Name
1	6.487	484864	0.03	Tricyclene
2	6.603	869830	0.06	Thujene <alpha->
3	6.804	104428930	7.25	Pinene <alpha->
4	7.169	16808127	1.17	Camphene
5	7.811	5324525	0.37	Sabinene
6	7.904	9109058	0.63	Pinene <beta->
7	8.263	17219482	1.19	Myrcene
8	8.656	273105	0.02	Phellandrene <alpha->
9	8.805	132910	0.01	Carene <delta-3->
10	8.994	699303	0.05	Terpinene <alpha->
11	9.225	13848260	0.96	Cymene <para->
12	9.345	41862007	2.90	Limonene*
13	9.577	189374	0.01	Ocimene <cis-, beta->
14	9.878	255721	0.02	Ocimene <trans-, beta->
15	10.209	84397217	5.86	Terpinene <gamma->
16	10.488	962294	0.07	Sabinene hydrate <cis->
17	10.593	1609421	0.11	Linalool oxide <cis->
18	11.029	10062888	0.70	Terpinolene
19	11.630	975470340	67.69	Linalool*
20	12.711	65136340	4.52	Camphor
21	12.882	617276	0.04	Citronellal
22	13.096	148022	0.01	Isoborneol
23	13.193	77040	0.01	Pinocarvone
24	13.354	3223946	0.22	Borneol

Peak#	R.Time	Area	Area%	Name
25	13.554	213148	0.01	Linalool oxide <trans-> (pyranoid)
26	13.652	1803489	0.13	Terpinen-4-ol
27	13.947	95737	0.01	Cymen-8-ol <para->
28	14.049	3906298	0.27	Terpineol <alpha->
29	14.212	446950	0.03	Myrtenol
30	14.360	347626	0.02	Decanal <n->
31	14.515	281389	0.02	Verbenone
32	15.056	810209	0.06	Citronellol*
33	15.372	226255	0.02	Neral
34	15.746	22767728	1.58	Geraniol*
35	16.181	329187	0.02	Geranial
36	16.260	537241	0.04	Decyl alcohol
37	16.575	75560	0.01	Bornyl acetate
38	16.772	66404	0.00	Decadienal <(2E,4Z)->
39	16.895	228747	0.02	Tridecane
40	17.139	97868	0.01	Undecanal
41	17.631	1236720	0.09	Myrtenyl acetate
42	18.316	173819	0.01	Citronellyl acetate
43	18.601	467312	0.03	Neryl acetate
44	19.111	52485836	3.64	Geranyl acetate
45	19.774	106936	0.01	Dodecanal
46	20.172	874706	0.06	Caryophyllene <(E)->
47	21.238	186956	0.01	2-Dodecenal
48	21.705	118065	0.01	Germacrene D
		1441094466	100.00	

Kosmetiniai alergenai: *-silpnas, **-vidutinio stiprumo, ***- stiprus alergenai

Analiz atliko

dr. Jurga B dien