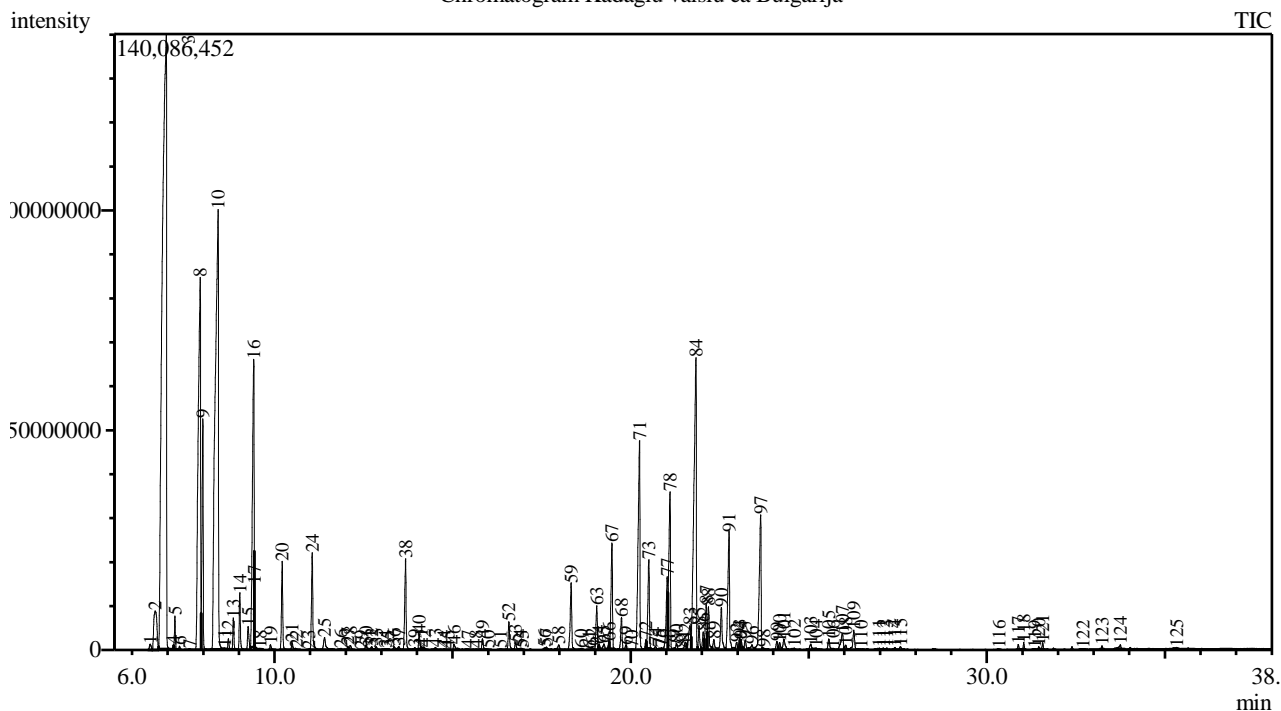


Analysis numb.: GC726  
 Analysis date: 2019 06 17  
 Sample name: Kadagi vaisi ea  
 Botanical name: Juniperus communis (berry)  
 Sample batch num: JCDFREO0118  
 Sample origin: Bulgarija  
 Best before: 2021 06

Chromatogram Kadagiu vaisiu ea Bulgarija



Peak Report TIC

Peak#	R.Time	Area	Area%	Name
1	6.509	4485964	0.10	Tricyclene
2	6.649	54667186	1.27	Thujene <alpha->
3	6.962	1147264362	26.57	Pinene <alpha->
4	7.159	1502554	0.03	Fenchene <alpha->
5	7.203	13860737	0.32	Camphene
6	7.334	1424531	0.03	Thuja-2,4(10)-diene
7	7.615	745087	0.02	Verbenene
8	7.914	392351462	9.09	Sabinene
9	7.987	120442677	2.79	Pinene <beta->
10	8.417	630423435	14.60	Myrcene
11	8.601	274197	0.01	Carene <delta-,2->
12	8.705	4885137	0.11	Phellandrene <alpha->
13	8.846	14433206	0.33	Carene <delta-,3->
14	9.026	28908472	0.67	Terpinene <alpha->
15	9.261	15064484	0.35	Cymene <para->
16	9.415	216743245	5.02	Limonene*
17	9.437	8700381	0.20	Phellandrene <beta->
18	9.594	307734	0.01	Ocimene <cis-, beta->
19	9.886	2745096	0.06	Ocimene <trans-, beta->
20	10.216	47311716	1.10	Terpinene <gamma->
21	10.493	4165790	0.10	Sabinene hydrate <trans->
22	10.607	489520	0.01	Linalool oxide <cis->
23	10.960	187628	0.00	Linalool oxide <trans->
24	11.060	58078732	1.34	Terpinolene

Peak#	R.Time	Area	Area%	Name
25	11.404	11583497	0.27	Linalool*
26	11.863	1025016	0.02	Thujone <alpha->
27	12.059	2098354	0.05	Menth-2-en-1-ol <cis-, para->
28	12.129	3083520	0.07	Campholenal <alpha->
29	12.427	610360	0.01	Anisole, <2-vinyl-> + Limonene oxide <trans->
30	12.566	3554643	0.08	Pinocarveol <trans->
31	12.664	843225	0.02	Camphor
32	12.727	2117600	0.05	Verbenol <trans->
33	12.855	2539113	0.06	Citronellal
34	13.118	1040037	0.02	Pinocamphone <trans->
35	13.182	517379	0.01	Pinocarvone
36	13.361	2604770	0.06	Borneol
37	13.487	2547804	0.06	1,3,5-Undecatriene
38	13.680	58082509	1.35	Terpinen-4-ol
39	13.938	1779070	0.04	Cymen-8-ol <para->
40	14.060	8937126	0.21	Terpineol <alpha->
41	14.127	324119	0.01	Myrtenal
42	14.204	1895789	0.04	Myrtenol
43	14.516	1660779	0.04	Verbenone
44	14.763	557187	0.01	Fenchyl acetate
45	14.869	447785	0.01	Carveol <trans->
46	15.038	4367450	0.10	Citronellol*
47	15.439	949885	0.02	Thymol methyl ether
48	15.663	498694	0.01	Sabinene hydrate acetate <trans->
49	15.839	6998706	0.16	Citronellate <methyl->
50	15.991	488074	0.01	Myrtanol <trans->
51	16.346	746195	0.02	Unknown
52	16.581	17226989	0.40	Bornyl acetate
53	16.765	4457352	0.10	2-Undecanone
54	16.901	1074240	0.02	Tridecane
55	16.960	485838	0.01	Terpin-1-en-4-yl acetate
56	17.577	944700	0.02	Geranic acid <methyl-> ester
57	17.637	1856776	0.04	Myrtenyl acetate
58	17.981	3946046	0.09	Elemene <delta->
59	18.329	46783956	1.08	Cubebene <alpha->
60	18.610	1093815	0.03	Neryl acetate
61	18.833	336863	0.01	Longicyclene
62	18.916	2110140	0.05	Ylangene <alpha->
63	19.049	26788093	0.62	Copaene <alpha->
64	19.115	3442819	0.08	Geranyl acetate
65	19.251	5177267	0.12	Myrtanol acetate <trans->
66	19.393	3399318	0.08	Cubebene <beta->
67	19.474	69410169	1.61	Elemene <beta->
68	19.744	20134702	0.47	Sibirene
69	19.868	3164698	0.07	Longifolene
70	20.032	543204	0.01	Bergamotene <alpha-, cis-> + Ylangene <beta->
71	20.250	170468867	3.95	Caryophyllene <(E)->
72	20.427	5023701	0.12	Copaene <beta->
73	20.509	58545491	1.36	Elemene <gamma->
74	20.697	2493073	0.06	Aromadendrene
75	20.796	1149247	0.03	Isogermacrene D
76	20.871	1484209	0.03	Muurola-3,5-diene <trans->
77	21.026	55042719	1.27	Farnesene <(E)-, beta->
78	21.105	114199893	2.64	Humulene <alpha->
79	21.213	1243550	0.03	Cadina-1(6),4-diene <cis->
80	21.291	4549783	0.11	Muurola-4(14),5-diene <cis->
81	21.439	829617	0.02	Aristolochene<4,5-di-epi->
82	21.538	6790488	0.16	Cadina-1(6),4-diene <trans->
83	21.662	24749363	0.57	Muurolene <gamma->
84	21.832	306859670	7.11	Germacrene D
85	21.919	14308245	0.33	Selinene <beta->
86	22.039	12119338	0.28	Amorphene <gamma->
87	22.123	32986780	0.76	Bicyclgermacrene
88	22.186	26928764	0.62	Muurolene <alpha->
89	22.337	8188368	0.19	Amorphene <delta->
90	22.547	31860856	0.74	Cadinene <gamma->
91	22.762	89994654	2.08	Cadinene <delta->
92	22.978	5306443	0.12	Cadina-1,4-diene <trans->
93	23.057	5406217	0.13	Unknown

Peak#	R.Time	Area	Area%	Name
94	23.096	4555437	0.11	Cadinene <alpha->
95	23.216	7666211	0.18	Selina-3,7(11)-diene
96	23.406	6040282	0.14	Elemol <alpha->
97	23.650	111627927	2.58	Germacrene B
98	23.729	1453548	0.03	Calacorene <beta->
99	24.107	6559548	0.15	Germacren D-4-ol
100	24.183	5375371	0.12	Spathulenol
101	24.305	10020684	0.23	Caryophyllene oxide
102	24.591	1422890	0.03	Salvial-4(14)-en-1-one
103	25.055	4848748	0.11	Humulene epoxide II
104	25.209	1560104	0.04	Diepicubenol <1,10->
105	25.565	8050034	0.19	Epicubenol
106	25.684	1303601	0.03	Unknown
107	25.945	17939571	0.42	T-Muurolol
108	26.038	3437522	0.08	Muurolol <alpha->
109	26.266	16185104	0.37	Cadinol <alpha->
110	26.460	738919	0.02	Dodec-11-en-1-yl acetate
111	26.980	1353215	0.03	Germacra-4(15),5,10(14)-trien-1-alpha-ol
112	27.095	1447120	0.03	Shyobunol
113	27.193	961027	0.02	Juniper camphor
114	27.420	2134377	0.05	Unknown
115	27.575	2456003	0.06	Unknown
116	30.349	193224	0.00	Camphorene <p->
117	30.885	2259243	0.05	Manool
118	31.038	3158433	0.07	Camphorene <m->
119	31.345	211430	0.00	Sandaracopimara-8(14),15-diene
120	31.460	1172667	0.03	Camphorene <m->
121	31.571	3413702	0.08	Unknown
122	32.702	255945	0.01	Abietadiene
123	33.236	1379432	0.03	Cembrene
124	33.752	4252686	0.10	Unknown
125	35.332	665674	0.02	Torulol
		4318368019	100.00	

Kosmetiniai alergenai: \*-silpnas, \*\*-vidutinio stiprumo, \*\*\*- stiprus alergenai

Analiz atliko

dr. Jurga B dien