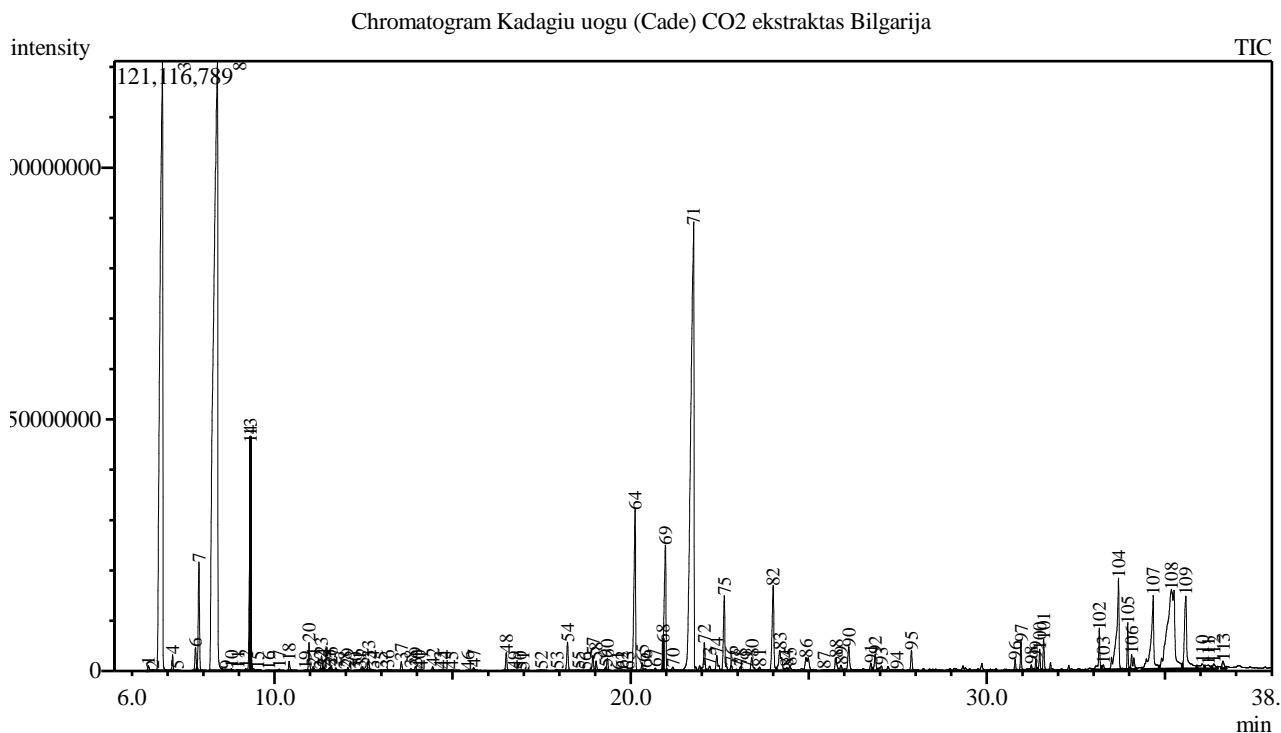


Analysis numb.: GC711
 Analysis date: 2019 05 27
 Sample name: Kadagi uog CO2 ekstraktas
 Botanical name: Juniperus oxicedri
 Sample batch num: m ginys
 Sample origin: Bulgarija XXXXXXXXXX
 Best before:



Peak Report TIC

Peak#	R.Time	Area	Area%	Name
1	6.458	2569146	0.07	Tricyclene
2	6.588	1066600	0.03	Thujene <alpha->
3	6.854	664729527	18.46	Pinene <alpha->
4	7.140	6617226	0.18	Fenchene <alpha-> + Camphene
5	7.278	252771	0.01	Thuja-2,4(10)-diene
6	7.782	11738986	0.33	Sabinene
7	7.879	52100242	1.45	Pinene <beta->
8	8.396	964577770	26.79	Myrcene
9	8.653	435159	0.01	Phellandrene <alpha->
10	8.796	617118	0.02	Carene <delta-3->
11	8.970	498280	0.01	Terpinene <alpha->
12	9.188	1069227	0.03	Cymene <para->
13	9.323	84379285	2.34	Limonene*
14	9.327	38500776	1.07	Sylvestrene
15	9.530	125876	0.00	Ocimene <cis-, beta->
16	9.837	139686	0.00	Ocimene <trans-, beta->
17	10.135	860349	0.02	Terpinene <gamma->
18	10.415	4745199	0.13	Sabinene hydrate <cis->
19	10.870	318535	0.01	Unknown
20	10.969	13385163	0.37	Terpinolene
21	11.087	2178758	0.06	Epoxyterpinene<6,7->
22	11.280	287244	0.01	Pinene oxide <alpha->
23	11.319	6563996	0.18	Linalool*
24	11.379	1903147	0.05	Sabinene hydrate <trans->

Peak#	R.Time	Area	Area%	Name
25	11.541	995157	0.03	Unknown
26	11.587	2398218	0.07	Octene <3-acetoxy->
27	11.720	1581205	0.04	Unknown
28	11.975	289503	0.01	Pinene hydrate <trans->
29	12.056	1605510	0.04	Campholenal<alpha->
30	12.277	158076	0.00	Limonene oxide <cis->
31	12.392	701253	0.02	Limonene oxide <trans->
32	12.474	1600330	0.04	Pinocarveol <trans->
33	12.638	5526642	0.15	Verbenol <trans->
34	12.755	691322	0.02	Camphene hydrate
35	13.002	828133	0.02	Pinene oxide <beta-> + Pinocamphone <trans->
36	13.177	2445473	0.07	Pinocarvone + Borneol
37	13.564	5217976	0.14	Terpinen-4-ol
38	13.836	1596007	0.04	Cymen-8-ol <para->
39	13.962	2588001	0.07	Terpineol <alpha->
40	14.063	206782	0.01	Myrtenal
41	14.121	667395	0.02	Myrtenol
42	14.445	2181688	0.06	Verbenone
43	14.661	843774	0.02	Sabinene hydrate acetate <cis-> + Fenchyl ac
44	14.768	1128019	0.03	Carveol <trans->
45	14.976	1236432	0.03	Citronellol*
46	15.423	256183	0.01	Carvone
47	15.596	2181388	0.06	Sabinene hydrate acetate <trans->
48	16.512	9351573	0.26	Bornyl acetate
49	16.738	607213	0.02	Verbenyl acetate <trans->
50	16.890	452053	0.01	Pinocarvyl acetate <trans->
51	16.981	358601	0.01	Perilla alcohol
52	17.497	1103320	0.03	Methyl geranate + Myrtenyl acetate
53	17.938	455356	0.01	Piperitol acetate <trans->
54	18.232	16368193	0.45	Cubebene <alpha->
55	18.534	909651	0.03	Neryl acetate
56	18.717	182015	0.01	Cyclosativene
57	18.944	9163484	0.25	Copaene <alpha->
58	19.032	5463846	0.15	Geranyl acetate
59	19.303	926273	0.03	Cubebene <beta->
60	19.346	6386569	0.18	Elemene <beta->
61	19.632	357927	0.01	Gurjunene <alpha->
62	19.757	427973	0.01	Longifolene
63	19.926	238069	0.01	Bergamotene <alpha-, cis->
64	20.126	102579359	2.85	Caryophyllene <(E)->
65	20.325	4190426	0.12	Copaene <beta->
66	20.421	1938604	0.05	Bergamotene <alpha-, trans->
67	20.698	1957591	0.05	Isogermacrene D
68	20.913	5613144	0.16	Farnesene <(E)-, beta->
69	20.975	81029588	2.25	Humulene <alpha->
70	21.187	2672451	0.07	Isobornyl n-butanoate
71	21.765	562543718	15.62	Germacrene D
72	22.073	15968875	0.44	Muurolene <alpha->
73	22.221	3702267	0.10	Bisabolene <beta->
74	22.423	11751719	0.33	Cadinene <gamma-> + Cubebol
75	22.632	43889530	1.22	Cadinene <delta->
76	22.827	3743259	0.10	Unknown
77	22.974	986825	0.03	Cadinene <alpha->
78	23.088	2302364	0.06	Copaen-11-ol <alpha->
79	23.267	921424	0.03	Elemol <alpha->
80	23.404	11005106	0.31	Germacrene B
81	23.623	2445448	0.07	Calacorene <beta->
82	24.005	59033408	1.64	Germacrene D-4-ol
83	24.191	23344002	0.65	Caryophyllene oxide
84	24.383	2898979	0.08	Unknown
85	24.475	3473582	0.10	Salvial-4(14)-en-1-one
86	24.929	18807354	0.52	Humulene epoxide II
87	25.428	945024	0.03	Epicubenol
88	25.768	9439744	0.26	Eremoligenol
89	25.909	3873981	0.11	Unknown
90	26.128	18608820	0.52	Eudesma-4(9),7-dien-1beta-ol
91	26.748	4676897	0.13	Unknown
92	26.871	10815082	0.30	Germacrene-4(15),5,10(14)-trien-1-alpha-ol
93	27.044	4488709	0.12	Germacrene

Peak#	R.Time	Area	Area%	Name
94	27.476	868461	0.02	Farnesol <(2E,6E)->**
95	27.888	10761611	0.30	Oplopanone
96	30.799	4501396	0.13	Manool
97	30.964	12405061	0.34	Camphorene <m->
98	31.254	4397904	0.12	Sandaracopimara-8(14),15-diene
99	31.383	5479400	0.15	Camphorene <m->
100	31.490	9112758	0.25	Cycloheptane, 4-methylene-1-methyl-2-(2-methyl-2-propenyl)-
101	31.600	13807589	0.38	Manoyl oxide <13-epi->
102	33.163	22297291	0.62	Torulol
103	33.275	5098811	0.14	Abienol
104	33.700	89761025	2.49	Sandaracopimarinal
105	33.960	17543759	0.49	Unknown
106	34.071	13068392	0.36	Isopimarol
107	34.673	84688530	2.35	Cubitene
108	35.187	236845550	6.58	Unknown
109	35.590	74465623	2.07	Communic acid
110	36.051	8244311	0.23	Communic acid
111	36.221	6851786	0.19	4,8,13-Duvatriene-1,3-Diol
112	36.380	5246444	0.15	Labda-8(20),13-diene-15,19-diol
113	36.636	6232417	0.17	Torulol
		3600662048	100.00	

Kosmetiniai alergenai: *-silpnas, **-vidutinio stiprumo, ***- stiprus alergenai

Analiz atliko

dr. Jurga B dien