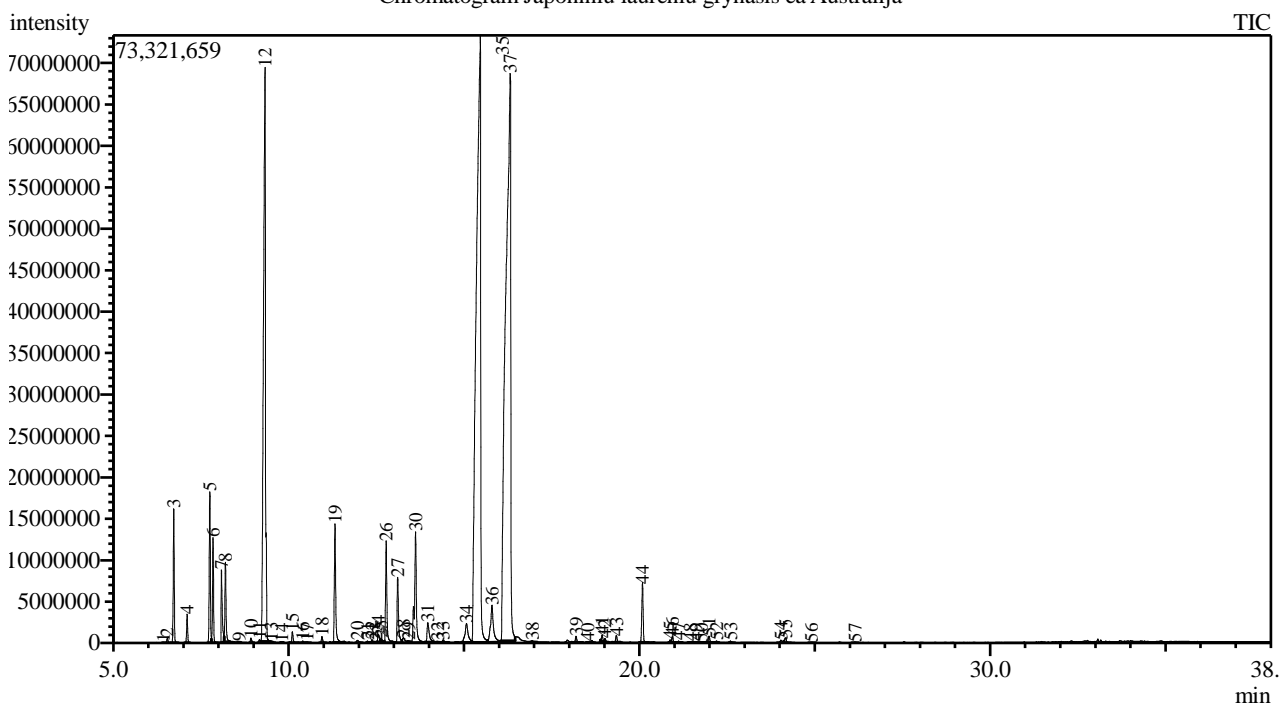


Analysis numb.: GC756
 Analysis date: 2019 09 23
 Sample name: Japonini laurenii grynasis ea
 Botanical name: Listeria cubeba
 Sample batch num: P204353
 Sample origin: Kinija
 Best before: 2023 06

Chromatogram Japoniniu laurenii grynasis ea Australija



Peak Report TIC

Peak#	R.Time	Area	Area%	Name
1	6.427	136541	0.01	Tricyclene
2	6.542	1364993	0.07	Thujene <alpha->
3	6.725	31583741	1.60	Pinene <alpha->
4	7.105	6721619	0.34	Camphene
5	7.753	39796395	2.01	Sabinene
6	7.844	25421378	1.28	Pinene <beta->
7	8.084	19319804	0.98	5-Hepten-2-one <6-methyl->
8	8.197	21474052	1.08	Myrcene
9	8.583	186304	0.01	Phellandrene <alpha->
10	8.925	1378736	0.07	Terpinene <alpha->
11	9.171	1029399	0.05	Cymene <para->
12	9.327	279130875	14.10	Limonene*
13	9.507	51079	0.00	Ocimene <cis-, beta->
14	9.808	82025	0.00	Ocimene <trans-, beta->
15	10.108	3112173	0.16	Terpinene <gamma->
16	10.402	490807	0.02	Sabinene hydrate <cis->
17	10.522	298235	0.02	Linalool oxide <cis->
18	10.950	1989642	0.10	Terpinolene
19	11.322	38062309	1.92	Linalool*
20	11.963	1105123	0.06	Menth-2-en-1-ol <cis-, para->
21	12.249	437473	0.02	Limonene oxide <cis->
22	12.378	796392	0.04	Limonene oxide <trans->
23	12.487	179598	0.01	Menth-2-en-1-ol <trans-para->
24	12.563	3060585	0.15	2,6-Octadienal <3,7-dimethyl-, (E)->

Peak#	R.Time	Area	Area%	Name
25	12.640	891423	0.05	Isopulegol <iso->
26	12.783	32665007	1.65	Citronellal
27	13.110	21833195	1.10	Isogeranial <(Z)->
28	13.273	2912093	0.15	Borneol
29	13.425	808884	0.04	Rose furan oxide
30	13.620	49788326	2.51	Isogeranial <(E)->
31	13.966	9674114	0.49	Terpineol <alpha->
32	14.245	313860	0.02	Piperitol <cis->
33	14.402	1187262	0.06	Unknown
34	15.072	13915306	0.70	Nerol
35	15.461	627282594	31.68	Neral
36	15.802	26972950	1.36	Geraniol*
37	16.315	676424490	34.17	Geranial
38	16.953	345482	0.02	Geranyl formate
39	18.198	2282288	0.12	Terpinyl acetate <alpha->
40	18.532	274923	0.01	Neryl acetate
41	18.939	1946427	0.10	Copaene <alpha->
42	19.017	1164043	0.06	Geranyl acetate
43	19.348	2152508	0.11	Elemene <beta->
44	20.093	19214726	0.97	Caryophyllene <(E)->
45	20.878	694856	0.04	Farnesene <(E)-, beta->
46	20.941	1922057	0.10	Humulene <alpha->
47	21.122	422743	0.02	Alloaromadendrene
48	21.449	153931	0.01	Selina-4,11-diene
49	21.618	212899	0.01	Germacrene D
50	21.766	138865	0.01	Selinene <beta->
51	21.992	2296350	0.12	Bicyclogermacrene
52	22.208	583922	0.03	Bisabolene <beta->
53	22.601	401743	0.02	Cadinene <delta->
54	24.043	1439152	0.07	Spathulenol
55	24.166	1856479	0.09	Caryophyllene oxide
56	24.912	180634	0.01	Humulene epoxide II
57	26.152	184998	0.01	Epiglobulol
		1979747808	100.00	

Kosmetiniai alergenai: *-silpnas, **-vidutinio stiprumo, ***- stiprus alergenai

Analiz atliko

dr. Jurga B dien