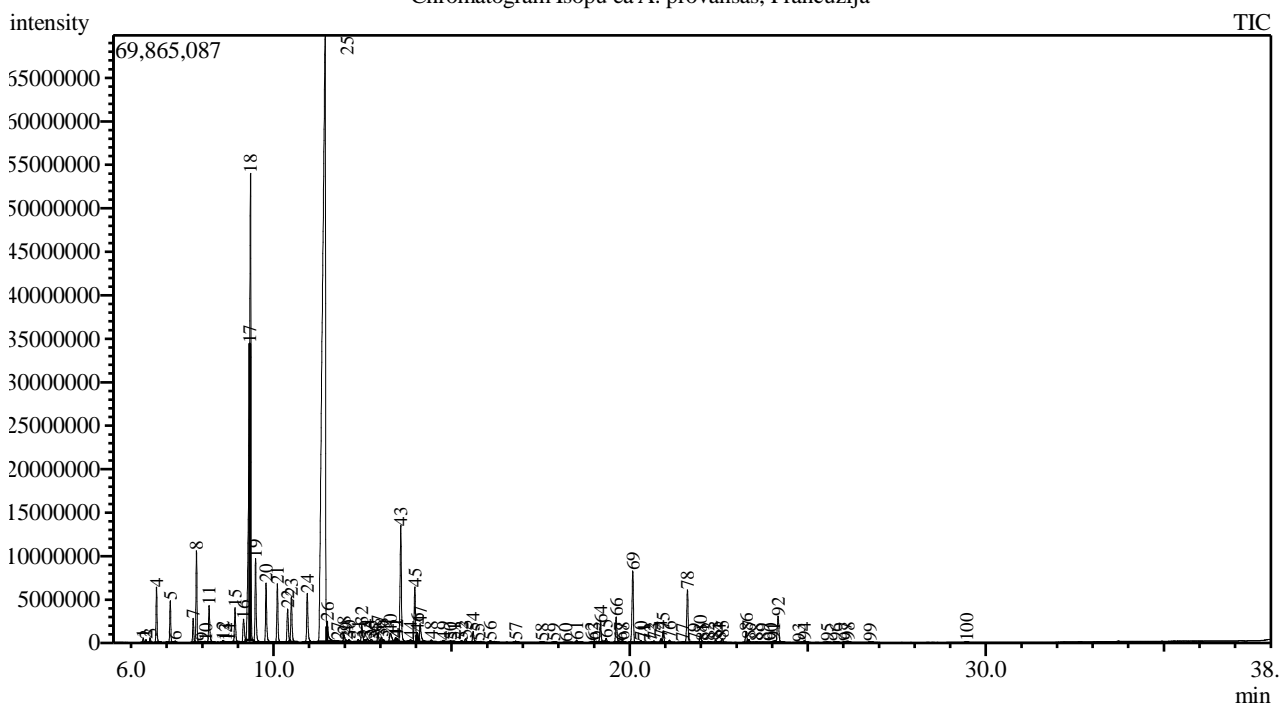


Analysis numb.: GC818
 Analysis date: 2019 12 16
 Sample name: Isop (Juozažoli) grynasis ea
 Botanical name: Hysopus officinalis
 Sample batch num: LOT 190082
 Sample origin: Pranc zija
 Best before:

Chromatogram Isopu ea A. provansas, Prancuzija



Peak Report TIC

Peak#	R.Time	Area	Area%	Name
1	6.343	985830	0.10	Unknown
2	6.419	609793	0.06	Tricyclene
3	6.534	1117329	0.11	Thujene <alpha->
4	6.715	12700943	1.31	Pinene <alpha->
5	7.100	9568343	0.98	Camphene
6	7.240	343593	0.04	Thuja-2,4(10)-diene
7	7.744	5755999	0.59	Sabinene
8	7.837	21780173	2.24	Pinene <beta->
9	7.993	322045	0.03	1-Octen-3-ol
10	8.095	251849	0.03	3-Octanone
11	8.190	10003997	1.03	Myrcene
12	8.582	659551	0.07	Phellandrene <alpha->
13	8.650	150589	0.02	Linalool oxide <dehydro-, cis->
14	8.739	84531	0.01	Carene <delta-, 3->
15	8.918	9680677	1.00	Terpinene <alpha->
16	9.158	7709073	0.79	Cymene <para->
17	9.330	77462710	7.97	Limonene*
18	9.355	108445288	11.16	Eucalyptol
19	9.497	22004169	2.26	Ocimene <cis-, beta->
20	9.791	15801078	1.63	Ocimene <trans-, beta->
21	10.109	15086383	1.55	Terpinene <gamma->
22	10.398	10198216	1.05	Sabinene hydrate <cis->
23	10.501	12814477	1.32	Linalool oxide <cis->
24	10.948	14911724	1.53	Linalool oxide <trans->

Peak#	R.Time	Area	Area%	Name
25	11.449	419902612	43.20	Linalool*
26	11.510	6546947	0.67	Hotrienol
27	11.803	221816	0.02	Fenchol <endo->
28	11.980	2329162	0.24	Menth-2-en-1-ol <cis-, para->
29	12.051	110258	0.01	Campholenal <alpha->
30	12.116	739877	0.08	Alloocimene
31	12.381	1015713	0.10	Nopinone
32	12.480	5688266	0.59	Pinocarveol <trans->
33	12.580	573267	0.06	Camphor
34	12.638	1305305	0.13	Verbenol <trans-> + Terpineol <trans-, dihyd-
35	12.749	1050726	0.11	Camphene hydrate
36	12.847	39525	0.00	Nerol oxide
37	12.935	2257014	0.23	Myrtenyl methyl ether
38	13.035	1398669	0.14	Pinocamphone <trans->
39	13.090	759017	0.08	Pinocarvone
40	13.283	4122676	0.42	Terpineol <delta-> + Borneol
41	13.425	821407	0.08	Pinocamphone <cis->
42	13.463	659096	0.07	Linalool oxide <cis-> (pyranoid)
43	13.575	35988054	3.70	Terpinen-4-ol
44	13.845	1566786	0.16	Cryptone + Cymen-8-ol <para->
45	13.969	16618626	1.71	Terpineol <alpha->
46	14.043	2926555	0.30	Myrtenal
47	14.120	7238529	0.74	Myrtenol
48	14.430	902647	0.09	Piperitol <cis->
49	14.767	1038395	0.11	Carveol <trans->
50	14.970	642581	0.07	Butanoate <2-methyl-, (3Z)-hexenyl->
51	15.079	576325	0.06	Isovalerate <cis-3-hexenyl->
52	15.275	716188	0.07	Neral
53	15.392	1156525	0.12	Carvone
54	15.608	3273756	0.34	Linalyl acetate
55	15.740	279685	0.03	Geraniol*
56	16.084	770550	0.08	Geranial
57	16.799	387284	0.04	Unknown
58	17.537	65954	0.01	Myrtenyl acetate
59	17.876	177277	0.02	Elemene <delta->
60	18.201	217373	0.02	Unknown
61	18.512	841642	0.09	Neryl acetate
62	18.933	378073	0.04	Copaene <alpha->
63	19.009	608040	0.06	Geranyl acetate
64	19.183	6356671	0.65	Bourbonene <beta->
65	19.340	1305247	0.13	Elemene <beta->
66	19.620	7864341	0.81	Methyleugenol
67	19.741	431402	0.04	Caryophyllene <(Z)->
68	19.807	534059	0.05	Gurjunene <alpha->
69	20.088	22500438	2.32	Caryophyllene <(E)->
70	20.313	690967	0.07	Copaene <beta->
71	20.409	214422	0.02	Bergamotene <alpha-, trans->
72	20.586	91787	0.01	Farnesene <(Z)-, beta->
73	20.682	518717	0.05	Isogermacrene D
74	20.877	1094807	0.11	Farnesene <(E)-, beta->
75	20.940	3668007	0.38	Humulene <alpha->
76	21.119	839383	0.09	Alloaromadendrene
77	21.486	262162	0.03	Muurolene <gamma->
78	21.623	16478722	1.70	Germacrene D
79	21.815	254414	0.03	Viridiflorene
80	21.988	2514438	0.26	Bicyclogermacrene
81	22.052	227262	0.02	Muurolene <alpha->
82	22.208	480431	0.05	Bisabolene <beta->
83	22.415	834020	0.09	Cadinene <gamma->
84	22.516	273249	0.03	Bourbananol <endo-, 1->
85	22.601	1293488	0.13	Cadinene <delta->
86	23.270	3702501	0.38	Elemol <alpha->
87	23.346	1153288	0.12	Unknown
88	23.565	347830	0.04	Bourbonanone<1-nor->
89	23.738	205614	0.02	Hexenyl benzoate <(3Z)->
90	23.960	196022	0.02	Germacrene D-4-ol
91	24.049	607222	0.06	Spathulenol
92	24.169	9999572	1.03	Caryophyllene oxide
93	24.753	119731	0.01	Ledol

Peak#	R.Time	Area	Area%	Name
94	24.909	804489	0.08	Humulene epoxide II
95	25.547	312212	0.03	Eudesmol <gamma->
96	25.789	350601	0.04	Muurolol <alpha->
97	26.055	320130	0.03	Eudesmol <beta->
98	26.130	438546	0.05	Cadinol <alpha->
99	26.754	173920	0.02	Bisabolol <alpha->
100	29.470	75275	0.01	Phytone
		971895945	100.00	

Kosmetiniai alergenai: *-silpnas, **-vidutinio stiprumo, ***- stiprus alergenai

Analiz atliko

dr. Jurga B dien