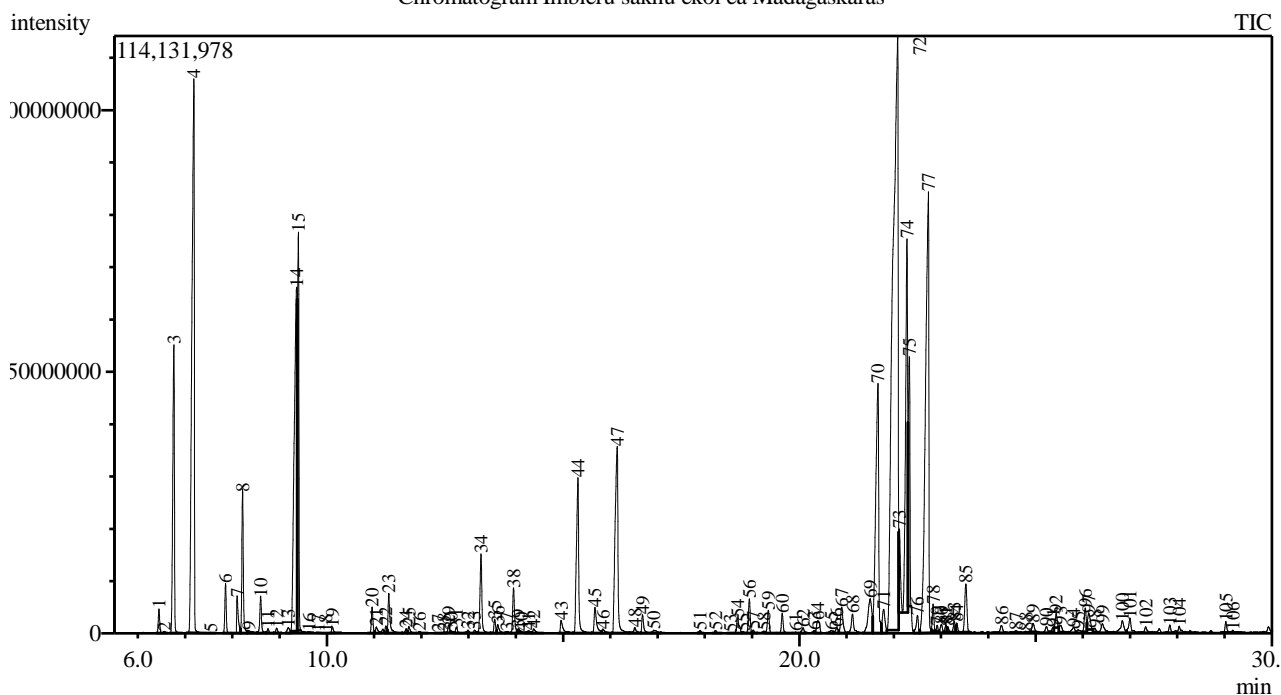


Analysis numb.: GC632  
 Analysis date: 2019 01 07  
 Sample name: Imbier šakn ekologiškas ea  
 Botanical name: Zingiber officinale  
 Sample batch num: GINFO0518PFE  
 Sample origin: Madagaskaras  
 Best before: 2023 05

Chromatogram Imbieru saknu ekol ea Madagaskaras



Peak Report TIC

Peak#	R.Time	Area	Area%	Name
1	6.446	9263444	0.25	Tricyclene
2	6.561	713596	0.02	Thujene <alpha->
3	6.763	137713790	3.69	Pinene <alpha->
4	7.186	384344188	10.30	Camphene
5	7.541	259800	0.01	Verbenene
6	7.857	18974578	0.51	Pinene <beta->
7	8.102	16239629	0.44	Hept-5-en-2-one <6-methyl->
8	8.219	60296287	1.62	Myrcene
9	8.347	2779368	0.07	Hept-5-en-2-ol <6-methyl->
10	8.598	17094398	0.46	Phellandrene <alpha->
11	8.755	2024968	0.05	Carene <delta-3->
12	8.938	2365051	0.06	Terpinene <alpha->
13	9.184	3581764	0.10	Cymene <para->
14	9.358	280709626	7.52	Phellandrene <beta-> + Sylvestrene
15	9.396	145850341	3.91	Eucalyptol
16	9.620	188717	0.01	Heptyl acetate <2->
17	9.814	131020	0.00	Ocimene <trans-, beta->
18	9.973	126894	0.00	Bergamal
19	10.118	3051116	0.08	Terpinene <gamma->
20	10.959	11382775	0.30	Terpinolene
21	11.048	3743229	0.10	2-Nonanone
22	11.247	3193640	0.09	Unknown
23	11.311	21440385	0.57	Linalool*
24	11.678	2042942	0.05	2-Methoxy-1,7,7-trimethylbicyclo[2.2.1]hept

Peak#	R.Time	Area	Area%	Name
25	11.736	3806854	0.10	Nona-1,3,7-triene <4,8-dimethyl-, (E)->
26	11.960	1072130	0.03	Menth-2-en-1-ol <cis-, para->
27	12.357	275000	0.01	Mentha-2,8-dien-1-ol <cis-, para->
28	12.481	689205	0.02	Menth-2-en-1-ol <trans-para->
29	12.579	3548239	0.10	Camphor
30	12.633	464112	0.01	Citronellal
31	12.743	3126076	0.08	Camphene hydrate
32	12.990	1947029	0.05	Isoborneol
33	13.129	1704364	0.05	Isocitral <(Z)->
34	13.265	40956107	1.10	Borneol
35	13.553	6676907	0.18	Terpinen-4-ol
36	13.620	4990752	0.13	Isocitral <(E)->
37	13.816	1145241	0.03	Cymen-8-ol <para-> + Cryptone
38	13.952	22833584	0.61	Terpineol <alpha->
39	14.057	1300876	0.03	Myrtenal
40	14.113	534308	0.01	Myrtenol
41	14.271	1962270	0.05	Decanal <n->
42	14.381	2850460	0.08	Mentha-1(7),8-dien-2-ol <cis-, para->
43	14.960	9301455	0.25	Citronellol*
44	15.317	97445659	2.61	Neral
45	15.677	18340395	0.49	Geraniol*
46	15.842	3179977	0.09	Dec-(2E)-enal
47	16.147	149038849	3.99	Geranial
48	16.521	4281902	0.11	Bornyl acetate
49	16.682	9730890	0.26	Undecan-2-one
50	16.921	2922633	0.08	2-Undecanol
51	17.901	1320143	0.04	Elemene <delta->
52	18.228	1350357	0.04	Cubebene <alpha->
53	18.536	217269	0.01	Neryl acetate
54	18.696	10272582	0.28	Cyclosativene
55	18.818	667960	0.02	Ylangene <alpha->
56	18.943	16574154	0.44	Copaene <alpha->
57	19.026	1585227	0.04	Geranyl acetate
58	19.250	837164	0.02	Sesquithujene <7-epi->
59	19.346	11562958	0.31	Elemene <beta->
60	19.642	10100859	0.27	Sesquithujene
61	19.920	502960	0.01	Cedrene <alpha->
62	20.083	3474048	0.09	Caryophyllene <(E)->
63	20.317	1069833	0.03	Copaene <beta->
64	20.391	10145715	0.27	Elemene <gamma-> + Bergamotene <alpha-,
65	20.678	2225908	0.06	Unknown
66	20.796	3786048	0.10	Guaiene <alpha->
67	20.899	17905404	0.48	Farnesene <(E)-, beta-> + Humuleme <alph.
68	21.128	13031590	0.35	Alloaromadendrene
69	21.504	37224978	1.00	Elemene <gamma->
70	21.664	205563234	5.51	Curcumene <alpha->
71	21.786	17647957	0.47	Selinene <beta->
72	22.082	858600490	23.00	Zingiberene <alpha->
73	22.117	38593510	1.03	Murolene <alpha->
74	22.278	216166032	5.79	Farnesene <(E,E)-, alpha->
75	22.330	114646259	3.07	Bisabolene <beta->
76	22.504	11042886	0.30	Cadinene <gamma->
77	22.733	418311978	11.21	Sesquiphellandrene <beta->
78	22.832	11124194	0.30	Bisabolene <(E)-gamma->
79	22.918	2439921	0.07	Cadina-1,4-diene <trans->
80	23.007	4985177	0.13	Cadinene <alpha->
81	23.102	3400030	0.09	Unknown
82	23.141	2376037	0.06	Calacorene <alpha-> + Selina-3,7(11)-diene
83	23.279	5448938	0.15	Elemol <alpha->
84	23.332	4366638	0.12	Sesquisabinene hydrate <cis->
85	23.525	29102264	0.78	Nerolidol <(E)->
86	24.283	6035380	0.16	Sesquisabinene hydrate <trans->
87	24.592	2530372	0.07	Unknown
88	24.797	1484023	0.04	Eudesmol<5-epi-7-epi-alpha->
89	24.947	5241335	0.14	Unknown
90	25.236	4078602	0.11	Eudesmol <10-epi-gamma->
91	25.375	2484883	0.07	Eudesmol <epi-, gamma->
92	25.439	7303404	0.20	Unknown
93	25.531	5464303	0.15	Eudesmol <gamma->

Peak#	R.Time	Area	Area%	Name
94	25.810	4806042	0.13	T-Muurolol
95	25.909	2874871	0.08	Selina-3,11-dien-6-alpha-ol + Muurolol <alpl
96	26.053	13664807	0.37	Eudesmol <beta->
97	26.126	11809778	0.32	Cadinol <alpha->
98	26.253	2760546	0.07	Selin-11-en-4-alpha-ol
99	26.421	9374805	0.25	Bisabolol <epi-beta->
100	26.842	12063703	0.32	Bisabolol <epi-, beta->
101	27.003	11237478	0.30	Unknown
102	27.337	3733896	0.10	Farnesal <(2Z, 6Z)->
103	27.846	4257346	0.11	Farnesal <(2E,6E)->
104	28.046	5414689	0.15	Unknown
105	29.034	5668383	0.15	Unknown
106	29.185	1348070	0.04	Cryptomeridiol
		3732944238	100.00	

Kosmetiniai alergenai: \*-silpnas, \*\*-vidutinio stiprumo, \*\*\*- stiprus alergenai

Analiz atliko

dr. Jurga B dien