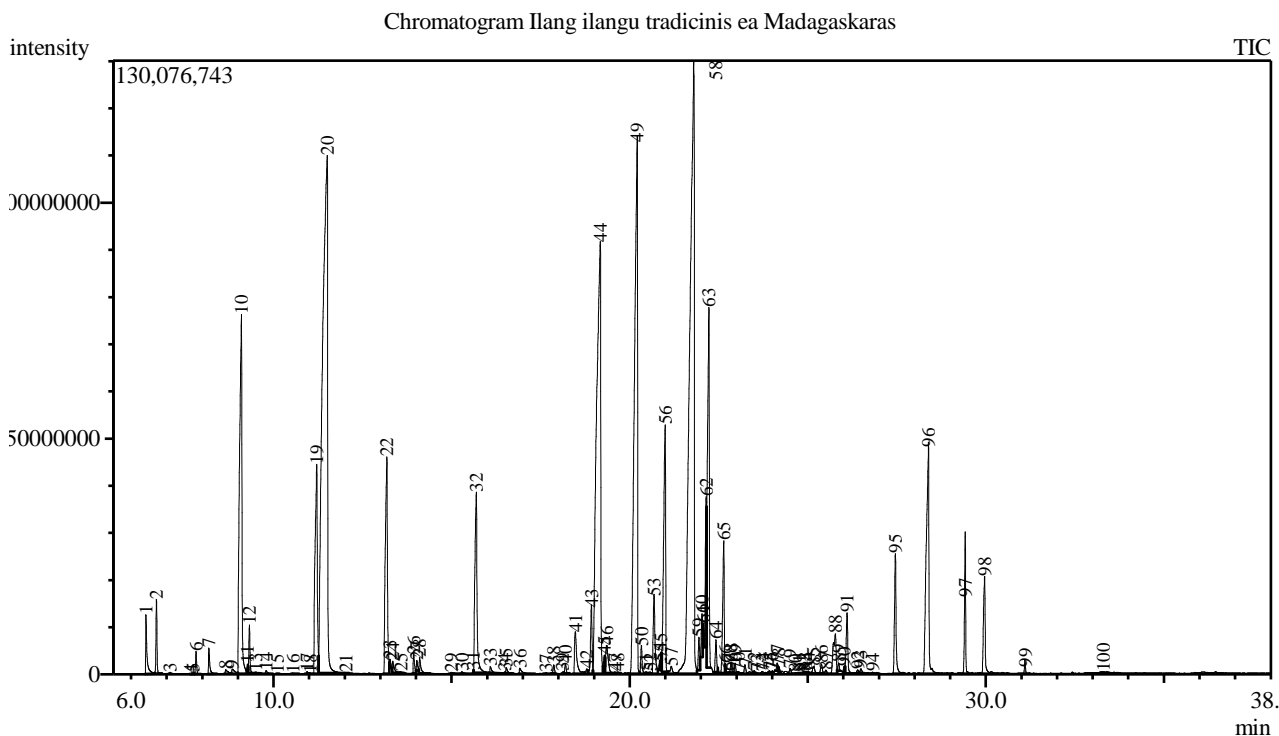


Analysis numb.: GC618  
 Analysis date: 2018 11 14  
 Sample name: Ilang ilang tradicinis ea  
 Botanical name: Cananga odorata (Ylang ylang)  
 Sample batch num: 0517/1  
 Sample origin: Madagaskaras  
 Best before: 2020 07



Peak Report TIC

Peak#	R.Time	Area	Area%	Name
1	6.418	30640687	0.49	Prenyl acetate
2	6.713	31112746	0.50	Pinene <alpha->
3	7.093	633262	0.01	Camphene
4	7.672	112699	0.00	Bois de Rose oxide
5	7.738	488322	0.01	Sabinene
6	7.824	10164660	0.16	Pinene <beta->
7	8.184	13409280	0.22	Myrcene
8	8.657	4384479	0.07	Hex-(3E)-enyl acetate
9	8.850	5505810	0.09	Hexyl acetate
10	9.099	354622488	5.69	Anisole <para-methyl->
11	9.269	2120962	0.03	Limonene*
12	9.322	21391845	0.34	Eucalyptol
13	9.504	742376	0.01	Ocimene <cis-, beta->
14	9.793	1978274	0.03	Ocimene <trans-, beta->
15	10.109	196252	0.00	Terpinene <gamma->
16	10.542	548017	0.01	Linalool oxide <cis->
17	10.945	1357621	0.02	Terpinolene
18	11.030	375690	0.01	Linalool oxide <trans->
19	11.213	191961974	3.08	Methyl benzoate (Clorius)
20	11.509	1074768922	17.26	Linalool*
21	12.037	121352	0.00	Sabinene hydrate <trans->
22	13.183	190910869	3.07	Benzyl acetate
23	13.272	4304292	0.07	Cresol acetate <para->
24	13.346	8058214	0.13	Ethyl benzoate

Peak#	R.Time	Area	Area%	Name
25	13.583	361597	0.01	Terpinen-4-ol
26	13.934	10306542	0.17	Terpineol <alpha->
27	14.022	4830803	0.08	Methyl salicylate
28	14.101	11346302	0.18	Estragole
29	14.997	2344085	0.04	Nerol
30	15.294	2495466	0.04	Neral
31	15.617	765573	0.01	Linalyl acetate
32	15.695	161978910	2.60	Geraniol*
33	16.090	4609623	0.07	Geranial
34	16.488	741075	0.01	Linalool oxide acetate <trans->
35	16.532	4106434	0.07	Anethole <(E)->
36	16.917	5874566	0.09	Phenyl ethane<1-nitro-2->
37	17.660	834364	0.01	Bicyclo[5.2.0]nonane, 4-methylene-2,8,8-trir
38	17.870	4684392	0.08	Elemene <delta->
39	18.117	932362	0.01	Benzyl butyrate
40	18.196	5193583	0.08	Cubebene <alpha->
41	18.479	39702638	0.64	Eugenol**
42	18.801	3948607	0.06	Ylangene <alpha->
43	18.929	42223761	0.68	Copaene <alpha->
44	19.173	729975575	11.72	Geranyl acetate
45	19.291	6053231	0.10	Cubebene <beta->
46	19.350	28027607	0.45	Elemene <beta->
47	19.581	591402	0.01	Gurjunene <alpha->
48	19.664	684271	0.01	Methyleugenol
49	20.207	672637260	10.80	Caryophyllene <(E)->
50	20.333	16117972	0.26	Copaene <beta->
51	20.461	854058	0.01	Gurjunene <beta->
52	20.573	732139	0.01	Aromadendrene
53	20.688	59590342	0.96	Cinnamyl acetate <(E)->
54	20.853	3303235	0.05	Muurolo-3,5-diene<trans->
55	20.876	3321643	0.05	Isoeugenol <(E)->***
56	20.998	199962768	3.21	Humulene <alpha->
57	21.174	8775346	0.14	Muurolo-4(14),5-diene <cis->
58	21.803	1112567305	17.86	Germacrene D
59	21.944	19159575	0.31	Amorphene <gamma->
60	22.029	23059367	0.37	Bicyclogermacrene
61	22.065	6584822	0.11	Muurolo-ene <alpha->
62	22.147	81373953	1.31	Bisabolene <(Z)-, gamma->
63	22.224	260031750	4.18	Farnesene <(E,E)-, alpha->
64	22.423	18440708	0.30	Cadinene <gamma->
65	22.640	83502307	1.34	Cadinene <delta->
66	22.689	2697236	0.04	Zonarene
67	22.766	269943	0.00	Bisabolene <(E)-gamma->
68	22.846	5200663	0.08	Cadina-1,4-diene <trans->
69	22.960	4834037	0.08	Cadinene <alpha->
70	23.049	1454565	0.02	Unknown
71	23.250	6258668	0.10	Elemol <alpha->
72	23.496	1815142	0.03	Nerolidol <(E)->
73	23.582	463756	0.01	Calacorene <beta->
74	23.730	2108213	0.03	Benzoate <(3Z)-hexenyl->
75	23.926	2226763	0.04	Germacrene D-4-ol
76	24.005	758200	0.01	Spathulenol
77	24.141	4409656	0.07	Caryophyllene oxide
78	24.183	2051904	0.03	Unknown
79	24.504	3593692	0.06	Guaiol
80	24.660	834937	0.01	Rosifoliol
81	24.770	386436	0.01	Copaborneol
82	24.877	965789	0.02	Humulene epoxide II
83	24.938	291158	0.00	Isoeugenol acetate <(E)->
84	25.019	1377225	0.02	Cubenol <1,10-di-epi->
85	25.161	6771193	0.11	Junenol
86	25.382	6728542	0.11	Epicubenol
87	25.507	2476973	0.04	Unknown
88	25.775	47066956	0.76	T-Muurolo
89	25.867	4148407	0.07	Muurolo <alpha->
90	26.027	2953567	0.05	Eudesmol <beta->
91	26.104	41115996	0.66	Cadinol <alpha->
92	26.403	2887455	0.05	7-Hydroxyfarnesen
93	26.492	2884717	0.05	Unknown

Peak#	R.Time	Area	Area%	Name
94	26.823	700214	0.01	Germacra-4(15),5,10(14)-trien-1-alpha-ol
95	27.460	76948154	1.24	Farnesol <(2Z,6Z)->**
96	28.388	247340605	3.97	Benzyl benzoate**
97	29.432	65720598	1.06	Farnesyl acetate
98	29.968	72413519	1.16	Benzyl salicylate*
99	31.113	6033966	0.10	Geranyl benzoate
100	33.303	7269251	0.12	Sitosterol <gamma->
		6227996508	100.00	

Kosmetiniai alergenai: \*-silpnas, \*\*-vidutinio stiprumo, \*\*\*- stiprus alergenai

Analiz atliko

dr. Jurga B dien