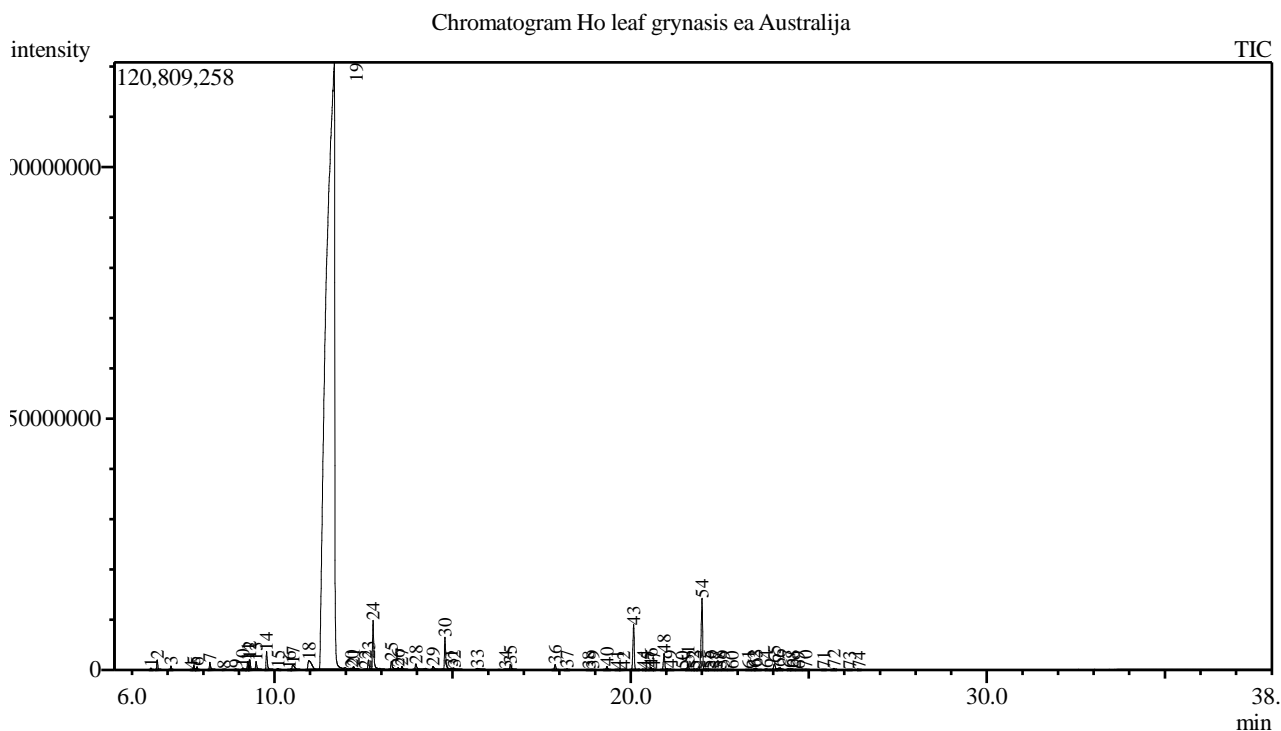


Analysis numb.: GC755  
 Analysis date: 2019 09 23  
 Sample name: Ho leaf grynasis ea  
 Botanical name:  
 Sample batch num: P204819  
 Sample origin: Australija  
 Best before:



Peak Report TIC

Peak#	R.Time	Area	Area%	Name
1	6.529	693360	0.03	Thujene <alpha->
2	6.707	3937167	0.18	Pinene <alpha->
3	7.092	1477111	0.07	Camphene
4	7.663	60678	0.00	Bois de Rose oxide
5	7.731	1812985	0.08	Sabinene
6	7.823	1350624	0.06	Pinene <beta->
7	8.183	3735199	0.17	Myrcene
8	8.579	211117	0.01	Phellandrene <alpha->
9	8.908	410310	0.02	Terpinene <alpha->
10	9.108	1223241	0.06	Menthene <1-, para-> + Cymene <para->
11	9.248	3979817	0.18	Limonene*
12	9.306	5018082	0.23	Eucalyptol
13	9.481	3872475	0.18	Ocimene <cis-, beta->
14	9.777	8789294	0.40	Ocimene <trans-, beta->
15	10.098	561444	0.03	Terpinene <gamma->
16	10.417	145466	0.01	Sabinene hydrate <cis->
17	10.516	4805901	0.22	Linalool oxide <cis->
18	10.967	13745531	0.63	Linalool oxide <trans->
19	11.680	1948519789	89.52	Linalool*
20	12.160	132976	0.01	Allocimene
21	12.220	1348610	0.06	Menthatriene<1,3,8-para->
22	12.552	76678	0.00	Mentha-2-en-1-ol <trans-, para->
23	12.640	4463451	0.21	Camphor
24	12.769	26256538	1.21	3,3,8-Trimethyldecane

Peak#	R.Time	Area	Area%	Name
25	13.283	4964249	0.23	Borneol
26	13.471	1066054	0.05	Linalool oxide <trans-> (pyranoid)
27	13.579	1690973	0.08	Terpinen-4-ol
28	13.969	4224267	0.19	Terpineol <alpha->
29	14.450	2593838	0.12	Cyclocitral <beta->
30	14.787	17630035	0.81	Unknown
31	14.970	1240706	0.06	Citronellol*
32	15.047	1064457	0.05	Ocimenone <(E)->
33	15.694	1243464	0.06	Geraniol*
34	16.491	229085	0.01	Bornyl acetate
35	16.625	3159852	0.15	Safrole
36	17.881	2756917	0.13	Elemene <delta->
37	18.212	462913	0.02	Cubebene <alpha->
38	18.832	237931	0.01	Ylangene <alpha->
39	18.932	232404	0.01	Copaene <alpha->
40	19.335	1838076	0.08	Elemene <beta->
41	19.625	373777	0.02	Methyleugenol
42	19.806	170112	0.01	Gurjunene <alpha->
43	20.085	23626665	1.09	Caryophyllene <(E)->
44	20.371	282704	0.01	Elemene <gamma->
45	20.466	165183	0.01	Maaliene <alpha->
46	20.569	1411079	0.06	Aromadendrene
47	20.647	128982	0.01	Myrtal-4(12)-ene
48	20.937	8952759	0.41	Humulene <alpha->
49	21.112	491522	0.02	Alloaromadendrene
50	21.445	226718	0.01	Gurjunene <gamma->
51	21.611	3237873	0.15	Germacrene D
52	21.758	259386	0.01	Selinene <beta->
53	21.814	271352	0.01	Selinene <delta->
54	22.005	40907073	1.88	Bicyclgermacrene
55	22.147	280214	0.01	Farnesene <(E,E)-, alpha->
56	22.227	565645	0.03	Unknown
57	22.401	106442	0.00	Cadinene <gamma->
58	22.513	104267	0.00	Selinene <7-epi-alpha->
59	22.598	983113	0.05	Cadinene <delta->
60	22.839	137010	0.01	Cadina-1,4-diene <trans->
61	23.312	434942	0.02	Cadinene <alpha->
62	23.462	539110	0.02	Germacrene B
63	23.519	1200614	0.06	Nerolidol <(E)->
64	23.816	693947	0.03	Unknown
65	24.037	3967066	0.18	Spathulenol
66	24.167	2082281	0.10	Caryophyllene oxide
67	24.443	664784	0.03	Viridiflorol
68	24.539	723280	0.03	Guaiol
69	24.715	365991	0.02	Rosifoliol
70	24.916	488222	0.02	Humulene epoxide II
71	25.420	191975	0.01	Epicubenol
72	25.707	958792	0.04	Unknown
73	26.147	230603	0.01	Selin-11-en-4-alpha-ol
74	26.414	162606	0.01	Bulnesol
		2176649154	100.00	

Kosmetiniai alergenai: \*-silpnas, \*\*-vidutinio stiprumo, \*\*\*- stiprus alergenai

Analiz atliko

dr. Jurga B dien